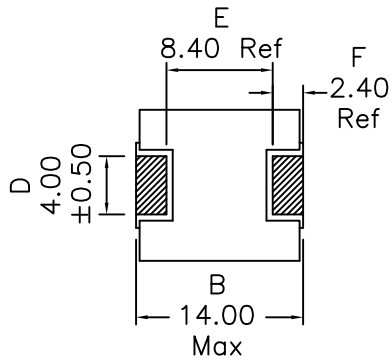
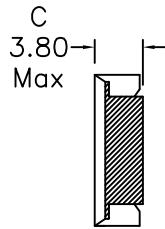


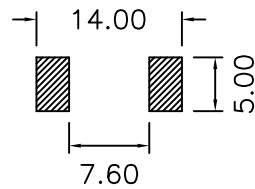
## 1. Mechanical Dimensions:



TOP VIEW

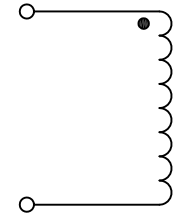


BOTTOM VIEW



SUGGESTED LAND PATTERN

## 2. Schematic:



## 3. Electrical Specifications: @25C

OCL: 0.60uH±20% @100KHz 0.25V

Q: 10 Min @100KHz 0.25V

DCR: 2.2 mOhms Max

I<sub>sat</sub>: 51Adc (Based on 20% drop in OCL)

I<sub>rms</sub>: 29Adc (Based on 40°C Temp Rise)

Notes:

1. Solderability: Leads shall meet MIL-STD-202G, Method 208H for solderability.
2. Flammability: UL94V-0
3. ASTM oxygen index: > 28%
4. Insulation System: Class F 155°C. UL file E151556
5. All listed parameters are to be within tolerance from -55°C to +125°C unless otherwise noted
6. Storage Temperature Range: -55°C to +125°C
7. Aqueous wash compatible
8. SMD Lead Coplanarity: ±0.004"(0.102mm)
9. Electrical and mechanical specifications 100% tested
10. RoHS Compliant Component
11. Outsourced item processed & controlled under XFMR5 QA system

DOC. REV: A/3

<b>XFMR5 Inc</b> www.XFMR5.com		Title: <b>SMT POWER INDUCTOR</b>	
UNLESS OTHERWISE SPECIFIED TOLERANCES: .xx ±0.25 Dimensions in MM	P/N: XFHCL4LP-R60M		REV. A
	DWN.	Xiang	Nov-13-15
	CHK.	YK Liao	Nov-13-15
SHEET 1 OF 1	APP.	DDC	Nov-13-15