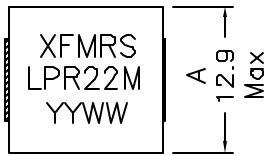
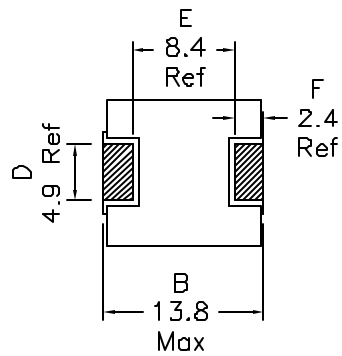
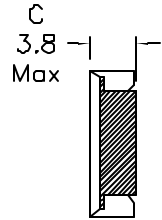


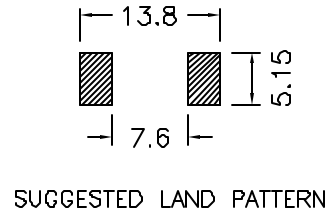
1. Mechanical Dimensions:



TOP VIEW

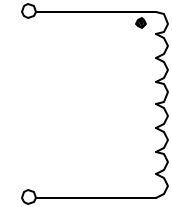


BOTTOM VIEW



SUGGESTED LAND PATTERN

2. Schematic:



3. Electrical Specifications: @25°C

OCL: 0.22 μ H \pm 20% @100KHz 0.25V

Q: 7 Min @100KHz 0.25V

DCR: 1.3 mOhms Max

I_{sat}: 65A_{dc} (Based on 20% drop in OCL)

I_{rms}: 38.5A_{dc} (Based on 40°C Temp Rise)

Notes:

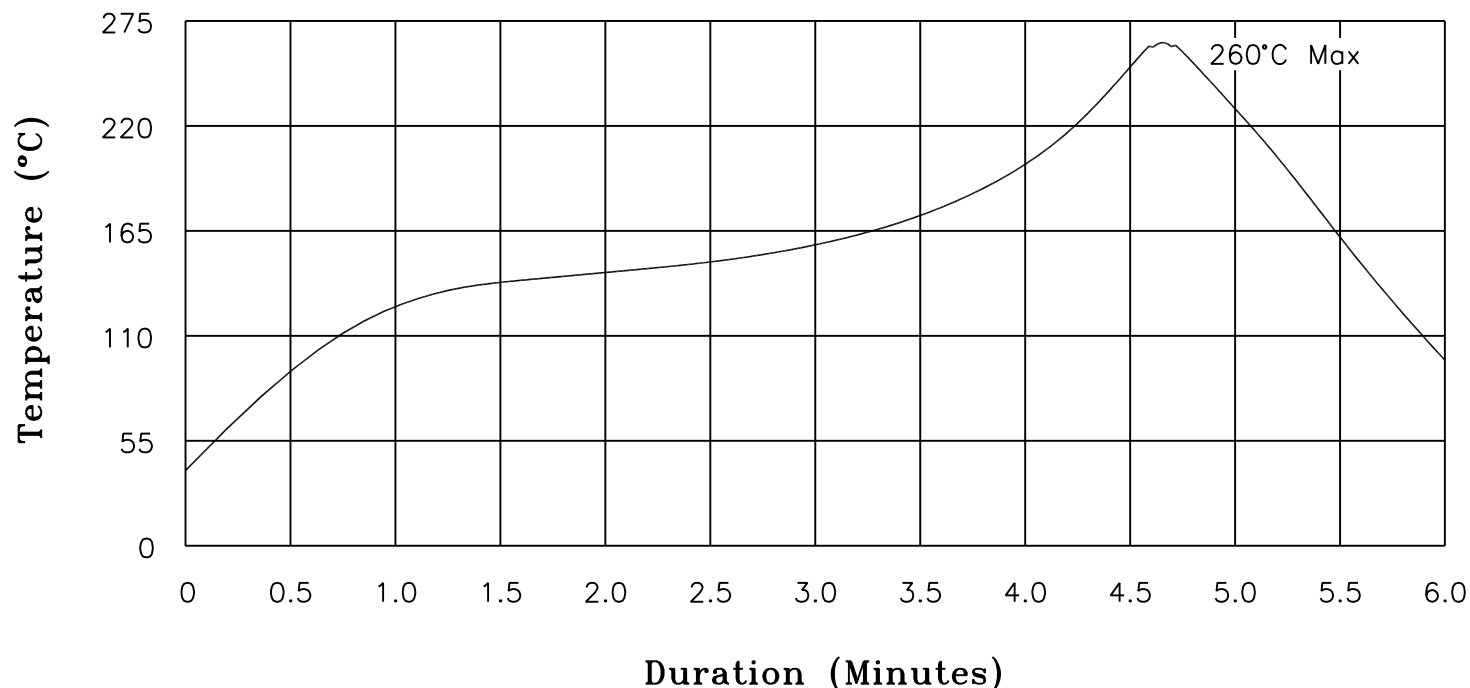
1. Solderability: Leads shall meet MIL-STD-202G, Method 208H for solderability.
2. Flammability: UL94V-0
3. ASTM oxygen index: > 28%
4. Insulation System: Class F 155°C. UL file E151556
5. Operating Temperature Range: All listed parameters are to be within tolerance from -55°C to +125°C
6. Storage Temperature Range: -55°C to +125°C
7. Aqueous wash compatible
8. SMD Lead Coplanarity: $\pm 0.004^{\circ}$ (0.102mm)
9. Electrical and mechanical specifications 100% tested
10. RoHS Compliant Component

DOC. REV: A/1

| | | | |
|---|--------------------|-------------------------------------|-----------|
| XFMRs Inc www.XFMRS.com | | Title: SMT POWER INDUCTOR | |
| UNLESS OTHERWISE SPECIFIED TOLERANCES: .xx \pm 0.25 Dimensions in MM | P/N: XFHCL4LP-R22M | | REV A |
| | DWN. | Feng | May-26-11 |
| | CHK. | YK Liao | May-26-11 |
| SHT 1 OF 1 | APP. | Joe Huff | May-26-11 |

XFMRs

Recommended Infrared Reflow Temperature Profile for RoHS Compliant Parts

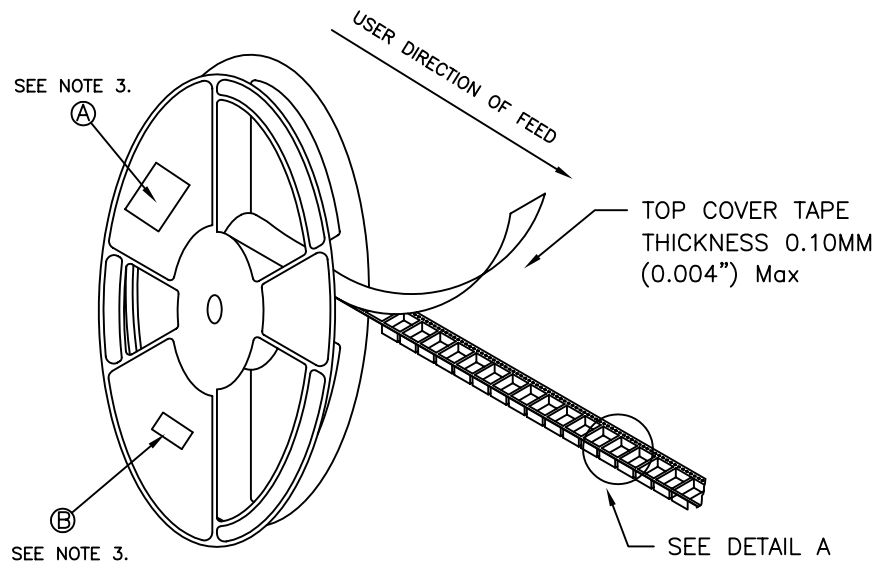


NOTES: Maximum duration at 260°+0/-5° with 10 seconds Max.
 Maximum duration above 217° shall be 60-150 seconds.
 ALL Temperatures refer to topside of the package, measured on the package body surface.

| | | | | |
|-----------------------------------|--|----------|-----------|--|
| XFMRs Inc www.XFMRs.com | Title: IR REFLOW CHART (RoHS Compliant parts) | | | |
| | UNLESS OTHERWISE SPECIFIED TOLERANCES: N/A | P/N: N/A | REV. A | |
| | DWN. | Juan Mao | Jan-16-05 | |
| | CHK. | YK Liao | Jan-16-05 | |
| SHEET 1 OF 1 | APP. | MS | Jan-16-05 | |

PROPRIETARY Document is the property of XFMRs Group & is not allowed to be duplicated without authorization.

TAPE AND REEL SPECIFICATION:



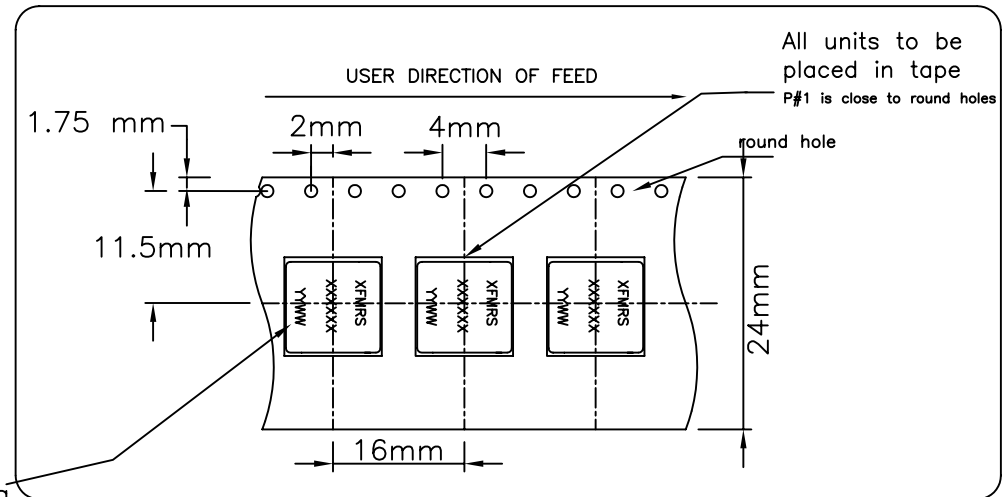
REEL AND TAPE ORIENTATION

13" REEL DIAMETER

NOTES:

- 1) PROCESS IN ACCORDANCE WITH EIA-481-2 STANDARDS
 - * TAPE LEADER DIMENSION 15.30" MIN.
 - * TAPE TRAILER DIMENSION 6.30" MIN.
- 2) PARTS SHOULD BE PACKAGED IN ACCORDANCE WITH ESD GUIDELINES IN EIA-541.
- 3) REEL LABEL: 'A' * PART NUMBER
 - * QUANTITY
 - * DATE CODE
- 4) 500pcs PER 13" REEL

DETAIL A



Details Marking
Refer to the
FG drawing

| | | | | |
|-----------------------------------|----------------------------|------|---------------------|-----------|
| XFMRs Inc www.XFMRs.com | Title: T&R SPEC | | | |
| | UNLESS OTHERWISE SPECIFIED | | P/N:XFHCL4LP Series | REV: A |
| TOLERANCES: | .xxs ±0.05 | DWN. | Kong | Jun-06-07 |
| Dimensions in mm | | CHK. | Kong | Jun-06-07 |
| SHT 2 OF 2 | | APP. | MS | Jun-06-07 |

DOC REV: A/1

PROPRIETARY

Document is the property of XFMRs Group & is not allowed to be duplicated without authorization.