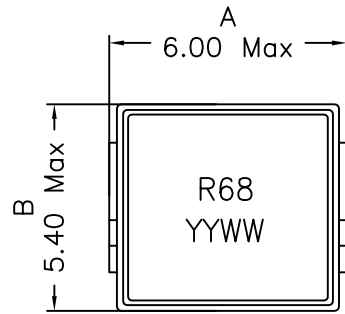
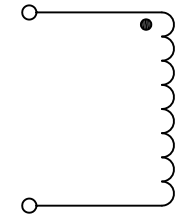
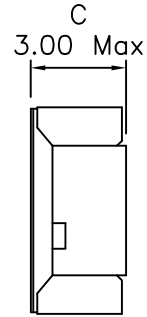


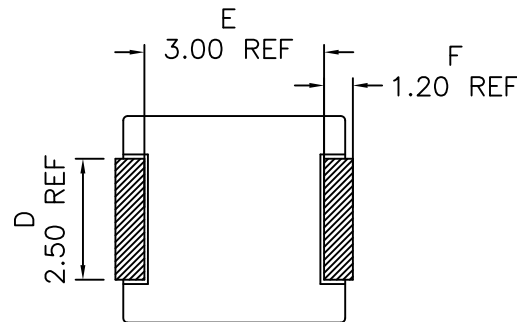
1. Mechanical Dimensions:



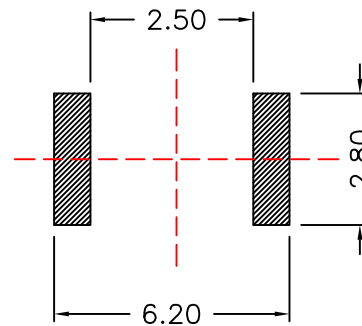
(TOP VIEW)



2. Schematic:



(BOTTOM VIEW)



(Land Patterns)

3. Electrical Specifications: @25°C

OCL: 0.68uH±20% @100KHz, 1V

Q: 20 Min @100KHz, 1V

DCR: 9.00 mOhms Max

SRF: 50 MHz Min

Isat: 13.5Adc (Based on 20% Typ drop in OCL)

Irms: 10.2Adc (Based on 40°C Temp Rise)

Notes:

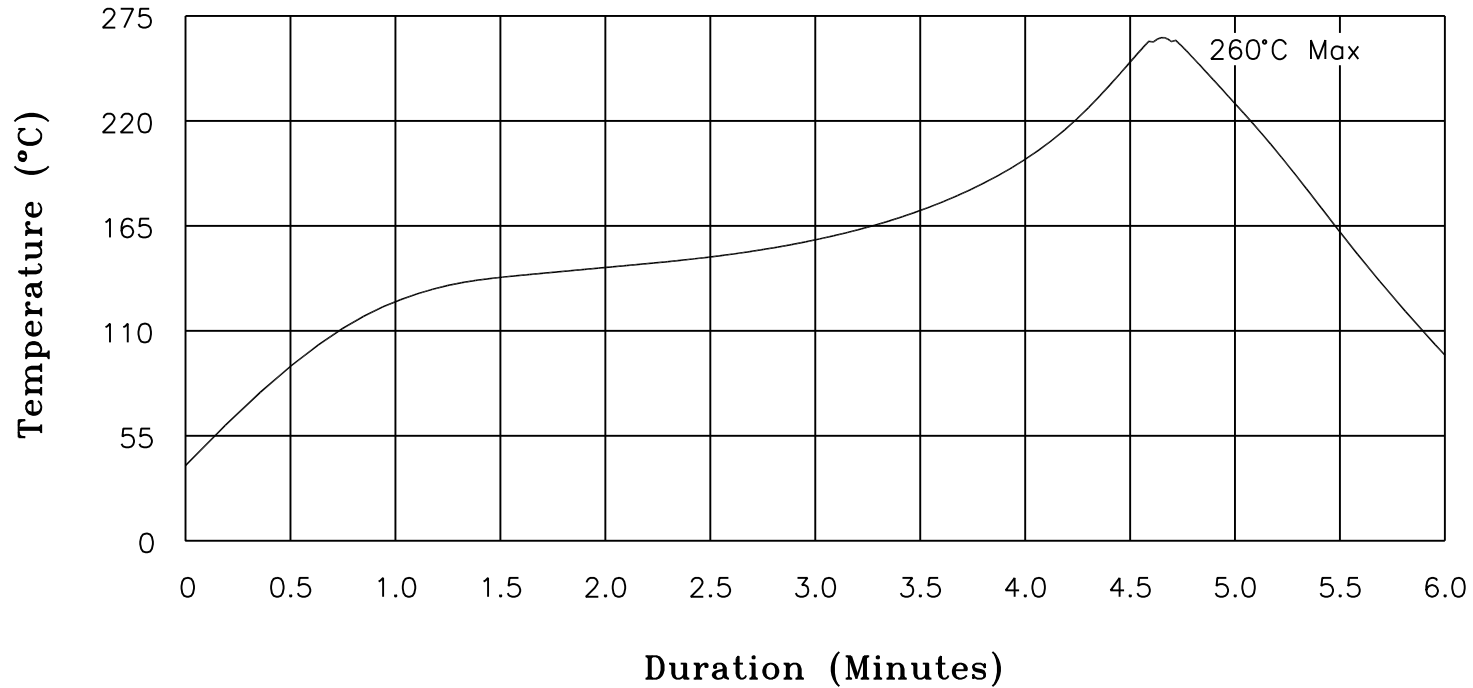
1. Solderability: Leads shall meet MIL-STD-202G, Method 208H for solderability.
2. Flammability: UL94V-0
3. ASTM oxygen index: > 28%
4. Insulation System: Class F 155°C. UL file E151556
5. All listed parameters are to be within tolerance from -40°C to +105°C unless otherwise noted
6. Storage Temperature Range: -55°C to +125°C
7. Aqueous wash compatible
8. SMD Lead Coplanarity: ±0.004"(0.102mm)
9. Electrical and mechanical specifications 100% tested
10. RoHS Compliant Component
11. Outsourced item processed & controlled under XFMRs QA system

DOC. REV: A/1

XFMRs Inc www.XFMRs.com	Title: SMT POWER INDUCTOR		
	UNLESS OTHERWISE SPECIFIED	P/N: XFHCL22MB-R68M	REV. A
TOLERANCES: .xx ±0.25	DWN.	Yuan	Apr-05-16
Dimensions in MM	CHK.	YK Liao	Apr-05-16
SHEET 1 OF 1	APP.	BW	Apr-05-16

XFMRs

Recommended Infrared Reflow Temperature Profile for RoHS Compliant Parts

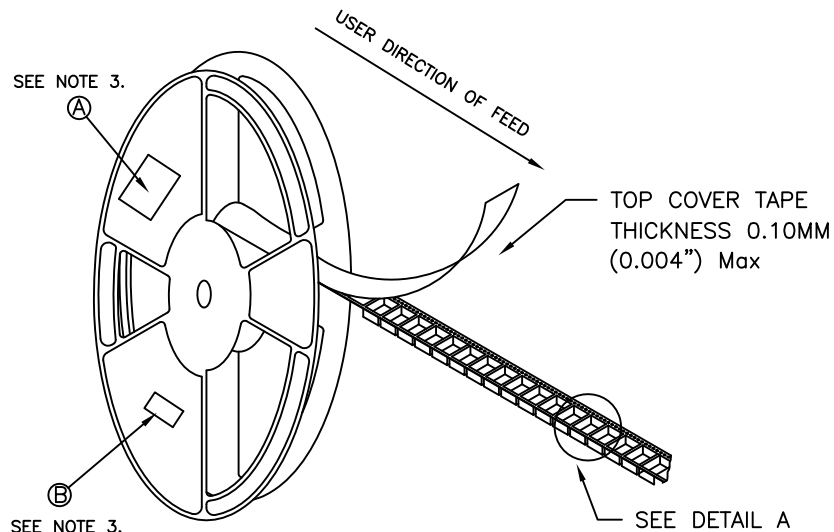


NOTES: Maximum duration at 260°+0/-5° shall be 10-20 seconds.
 Maximum duration above 217° shall be 60-150 seconds.
 ALL Temperatures refer to topside of the package, measured on the package body surface.

XFMRs Inc www.XFMRs.com	Title: IR REFLOW CHART (RoHS Compliant parts)			
	UNLESS OTHERWISE SPECIFIED TOLERANCES: N/A	P/N: N/A	REV. A	
	DWN.	Juan Mao	Jan-16-05	
	CHK.	YK Liao	Jan-16-05	
SHEET 1 OF 1	APP.	MS	Jan-16-05	

PROPRIETARY Document is the property of XFMRs Group & is not allowed to be duplicated without authorization.

TAPE AND REEL SPECIFICATION:



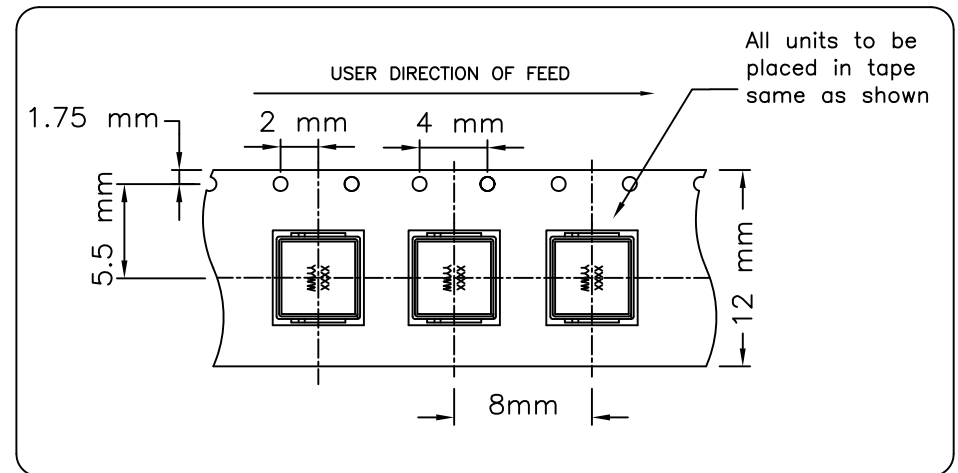
REEL AND TAPE ORIENTATION

13" REEL DIAMETER

NOTES:

- 1) PROCESS IN ACCORDANCE WITH EIA-481-2 STANDARDS
 - * TAPE LEADER DIMENSION 15.30" MIN.
 - * TAPE TRAILER DIMENSION 6.30" MIN.
- 2) PARTS SHOULD BE PACKAGED IN ACCORDANCE WITH ESD GUIDELINES IN EIA-541.
- 3) REEL LABEL: 'A' * CUSTOMER PART NUMBER
 - * QUANTITY
 - * DATE CODE
- 4) 2000PCS PER 13" REEL

DETAIL A



DOC.REV.: A/1

XFMR5 Inc	Title: T&R SPEC		
UNLESS OTHERWISE SPECIFIED TOLERANCES: .xxs ±xxxx Dimensions in mm	P/N: XFHCL22MB Series		REV. A
	DWN.	Kong	Feb-22-16
	CHK.	YK Liao	Feb-22-16
SHT 1 OF 1	APP.	GL	Feb-22-16

PROPRIETARY

Document is the property of XFMR5 Group & is not allowed to be duplicated without authorization.