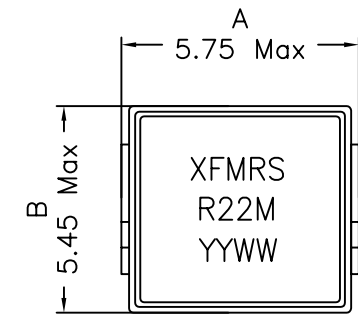
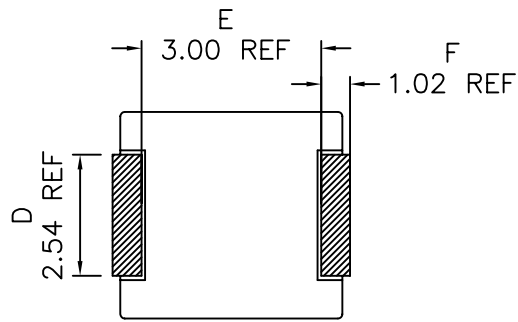
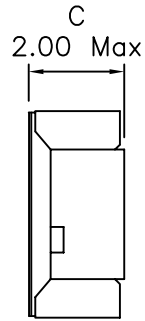


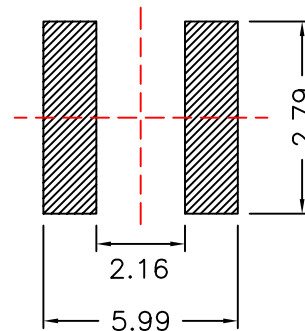
## 1. Mechanical Dimensions:



Top view

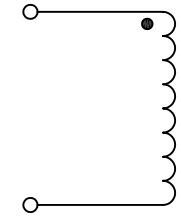


Bottom view



Land Patterns

## 2. Schematic:



## 3. Electrical Specifications: @25C

OCL: 0.22uH±20% @100KHz 0.1V

Q: tbd Min @100KHz 0.1V

DCR: 5.2 mOhms Max

Isat: 22Adc (Based on 20% Typ drop in OCL)

Irms: 15Adc (Based on 40°C Temp Rise typical)

### Notes:

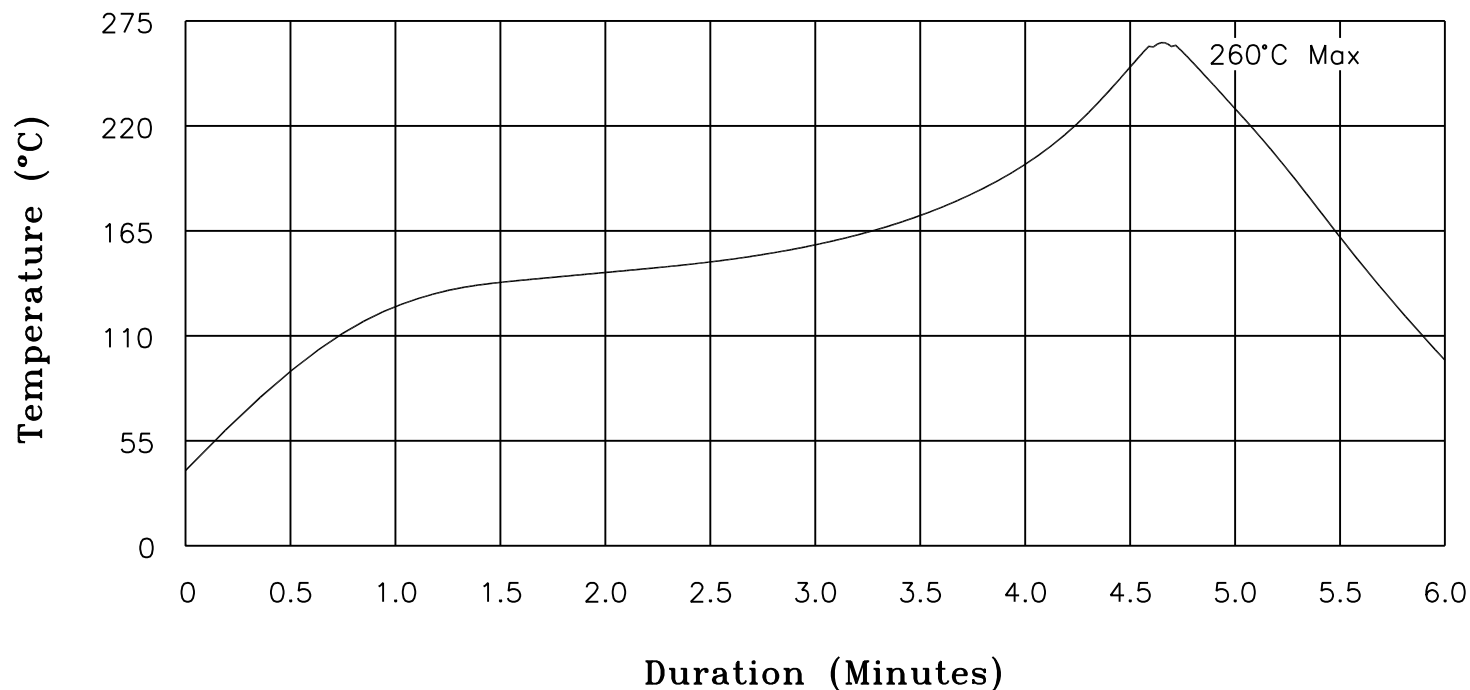
1. Solderability: Leads shall meet MIL-STD-202G, Method 208H for solderability.
2. Flammability: UL94V-0
3. ASTM oxygen index: > 28%
4. Insulation System: Class F 155°C. UL file E151556
5. Operating Temperature Range: All listed parameters are to be within tolerance from -55°C to +125°C
6. Storage Temperature Range: -55°C to +125°C
7. Aqueous wash compatible
8. SMD Lead Coplanarity: ±0.004"(0.102mm)
9. Electrical and mechanical specifications 100% tested
10. RoHS Compliant Component

DOC. REV: A/1

<b>XFMRs Inc.</b> www.XFMRS.com	Title: SMT POWER INDUCTOR		
	UNLESS OTHERWISE SPECIFIED	P/N: XFHCL22-R22M	REV. A
TOLERANCES: .xx ±0.25	DWN.	Feng	Aug-03-11
Dimensions in MM	CHK.	YK Liao	Aug-03-11
SHT 1 OF 1	APP.	BW	Aug-03-11

# XFMRs

## Recommended Infrared Reflow Temperature Profile for RoHS Compliant Parts



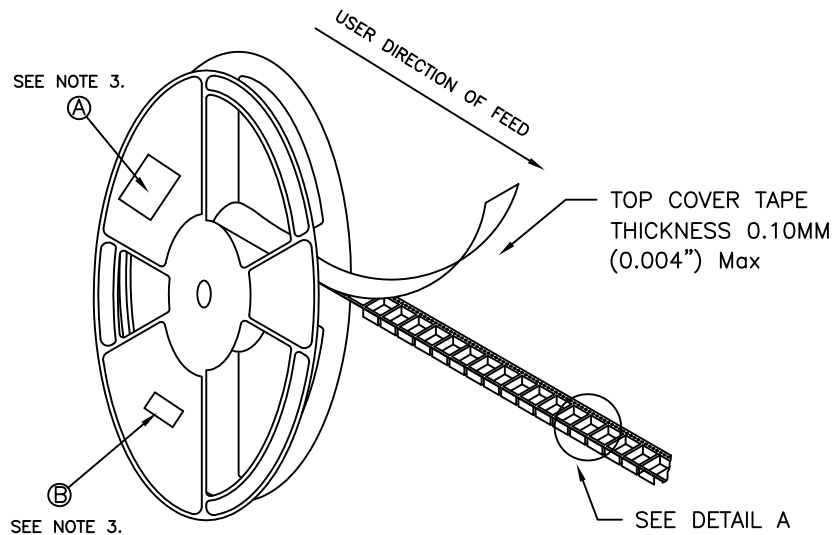
NOTES: Maximum duration at 260°+0/-5° with 10 seconds Max.  
 Maximum duration above 217° shall be 60-150 seconds.  
 ALL Temperatures refer to topside of the package, measured on the package body surface.

<b>XFMRs Inc</b> www.XFMRs.com	Title: <b>IR REFLOW CHART</b> <b>(RoHS Compliant parts)</b>		
	UNLESS OTHERWISE SPECIFIED TOLERANCES: N/A	P/N: N/A	REV. A
	DWN.	Juan Mao	Jan-16-05
	CHK.	YK Liao	Jan-16-05
SHEET 1 OF 1	APP.	MS	Jan-16-05

**PROPRIETARY**

Document is the property of XFMRs Group & is not allowed to be duplicated without authorization.

# TAPE AND REEL SPECIFICATION:



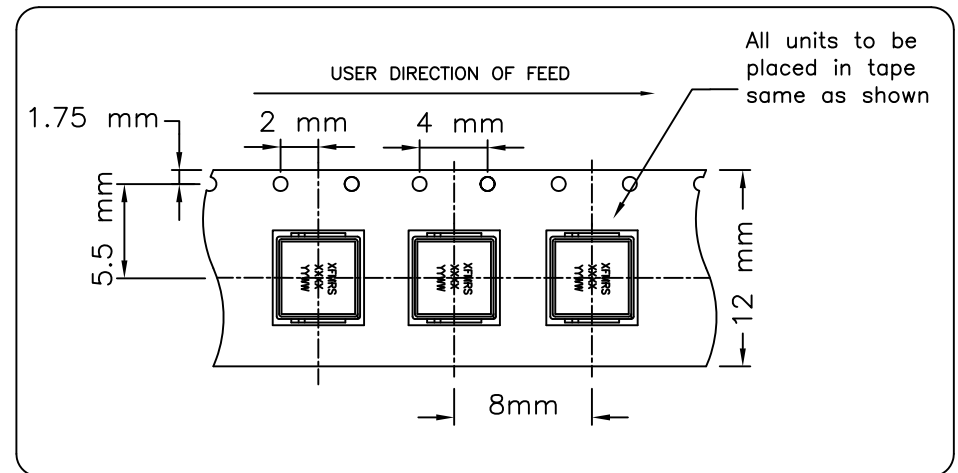
REEL AND TAPE ORIENTATION

**13" REEL DIAMETER**

## NOTES:

- 1) PROCESS IN ACCORDANCE WITH EIA-481-2 STANDARDS
  - \* TAPE LEADER DIMENSION 15.30" MIN.
  - \* TAPE TRAILER DIMENSION 6.30" MIN.
- 2) PARTS SHOULD BE PACKAGED IN ACCORDANCE WITH ESD GUIDELINES IN EIA-541.
- 3) REEL LABEL: 'A' \* CUSTOMER PART NUMBER
  - \* QUANTITY
  - \* DATE CODE
- 4) 3000PCS PER 13"REEL

DETAIL A



DOC.REV.: A/1

<b>XFMR5 Inc</b>	Title: <b>T&amp;R SPEC</b>		
UNLESS OTHERWISE SPECIFIED TOLERANCES: .xxs ±xxxx Dimensions in mm	P/N: XFHCL22-xxxx		REV. A
	DWN.	Kong	Sep-11-15
	CHK.	YK Liao	Sep-11-15
SHT 1 OF 1	APP.	BW	Sep-11-15

**PROPRIETARY**

Document is the property of XFMR5 Group & is not allowed to be duplicated without authorization.