



Lisboa, Sept. 4 – 9, 2006

WS 34 – Symbolism in Rock Art

Faceless anthropomorphic symbols: The Shift From Men To Gods

Léo DUBAL, PhD

virtual laboratory for archaeometry (FRANCE)

Abstract:

Until Neolithic Era, faceless anthropomorphic symbols seem to refer to human, and faced or masked figures to refer to gods.

Later, with the emergence of individuality, the situation is reversed.....Gods lose their face while Human win one.

"Seducir o dar miedo" fue la estrategia del homo sapiens para sobrevivir, en su doble confrontación con sus aliados y con el mundo animal.



Dolni Vestonice

27'000 BP



Airvaux / DRAC Poitou-Charente / 2006

early human face representation

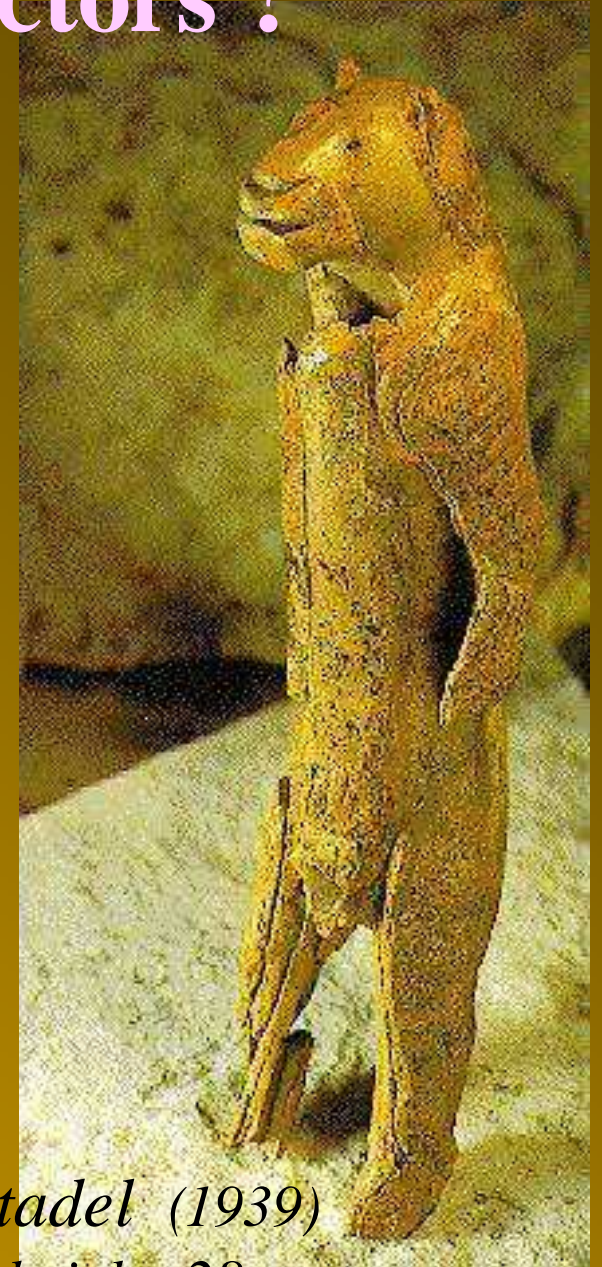
Social role : masked protectors ?



♀ ?

30'000 BP

Hohle Fels (2002)



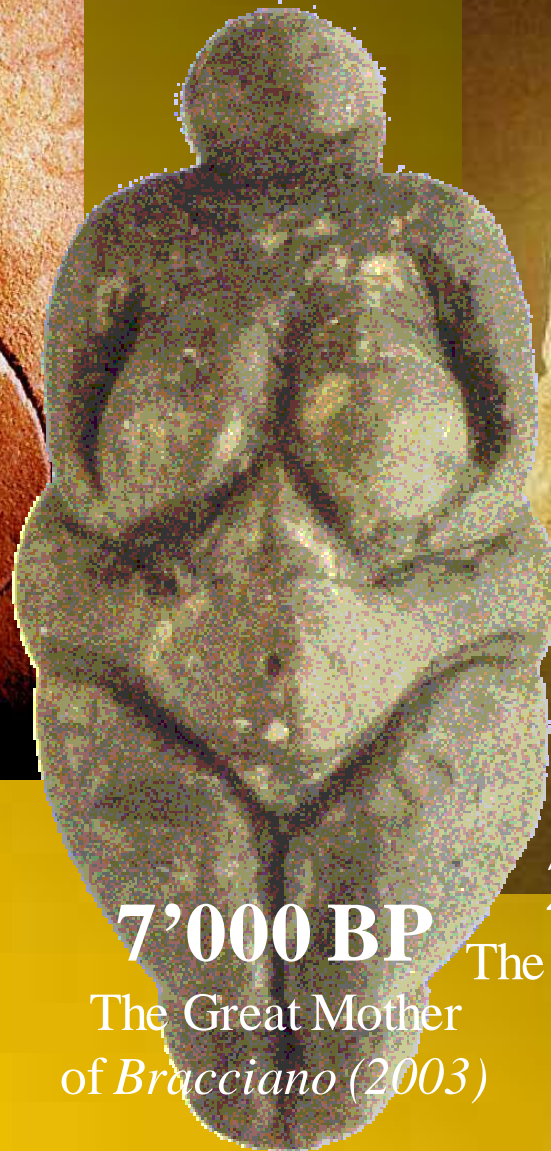
*Höhlenstein-Stadel (1939)
mammoth ivory / height: 28 cm*

Social role : faceless...nurturers



25'000 BP

The Gravettian Ladies of
Cussac & Pech Merle



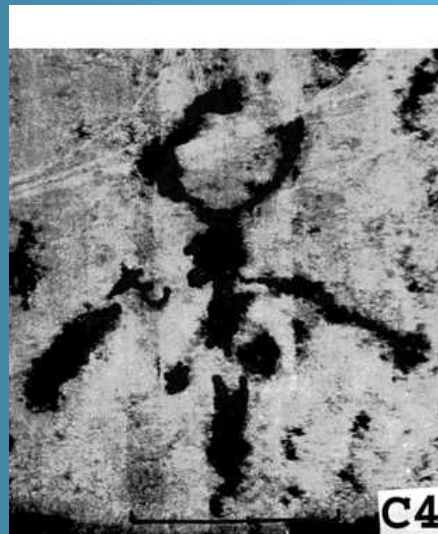
7'000 BP

The Great Mother
of *Bracciano* (2003)



25'000 BP

The Venus of *Willendorf*



Social role : mute icons

La Gardette (France)



Toro Muerto
A. Núñez Jiménez



Cernavoda



Stantari



Corte



Tihuanaco

Emergence of spoken language ?



Tafi del Valle



Helanshan



Lepenski Vir



Tafi del Valle



Boa Is.

JANUS

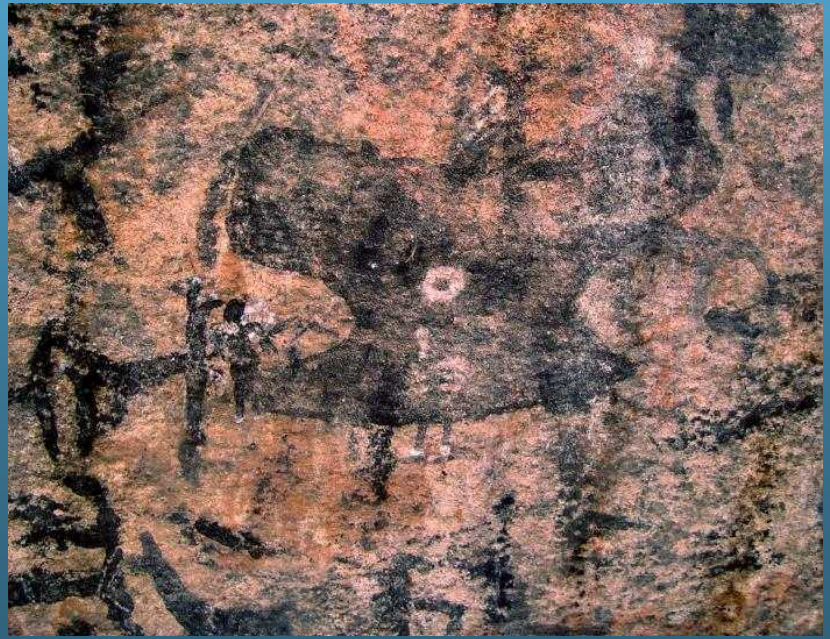
« bi-face » 1/2 god 1/2 man



egypto-lybian faceless gods

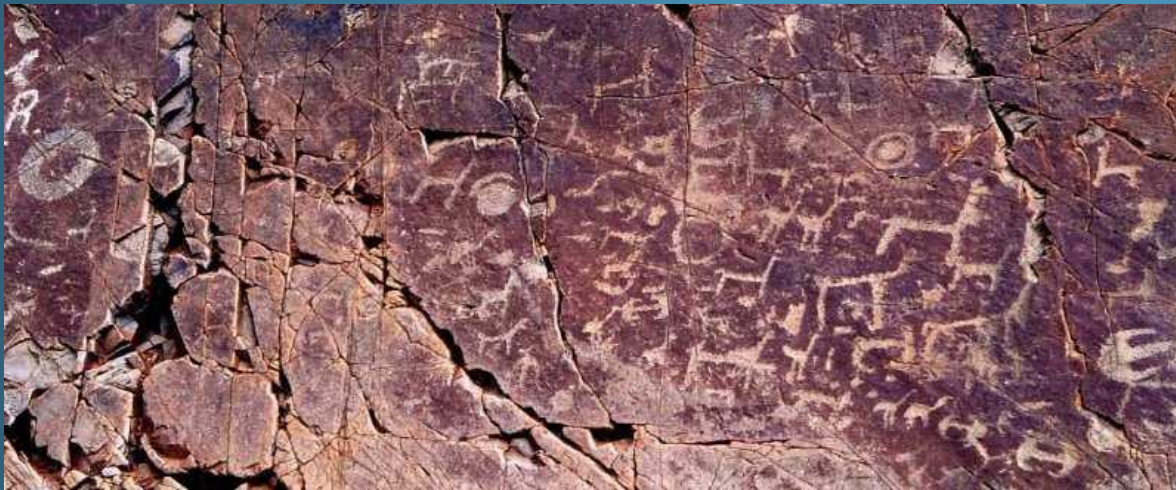


NOA





NOA



aten



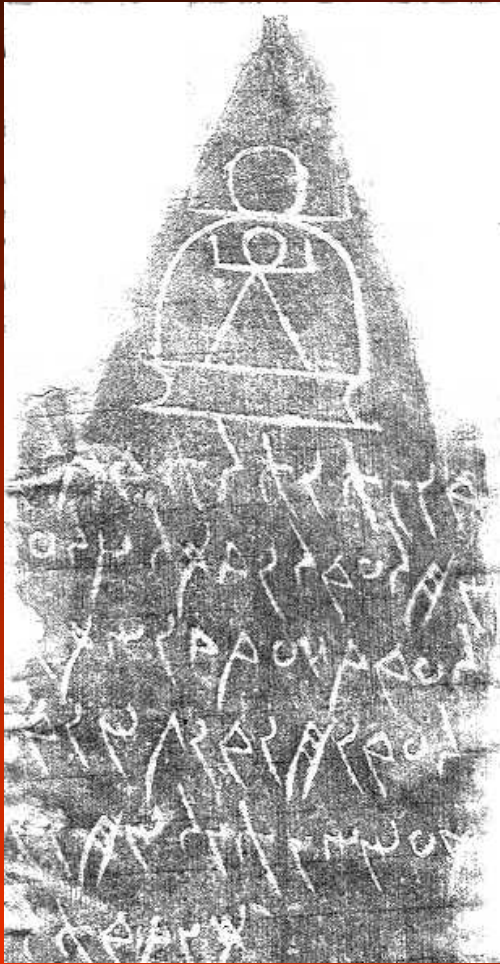
Akhenaten.....proto-patriach

ca. -1335

The *1st cartoon*, ca. 1230 BCE presenting :
the *mask of the invisibility*



Assyrian King Tukulti-Ninurta I (1244-1208 BCE)



Tanit: Faceless Goddess

Long life homo individualis...



Archaeometry is the measure of the antiquity. Some artefacts (terra-cotta tablets, stele and other engraved stones, parchments, coins) are carrying a colophon written in terms of their epoch...terms which have to be compared with those used in reports of ancient solar eclipses. This way, calendrical eras could be anchored to the astronomical common era calendar. For organic artefacts, AMS radiodating are providing useful results. With Megalithic artefacts, solstitial sunrises or sunsets are reshaping the landscape in terms of the solar cycle.

[Back to archaeometry.org](http://archaeometry.org)