

WORK-FLOW

Specialized Flow Cytometry Solutions

iQue Data Management

1. Preface

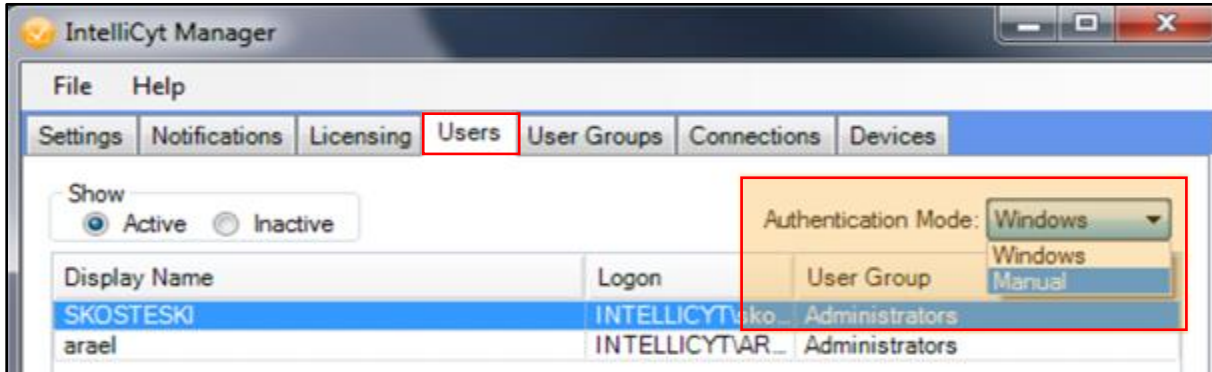
Unfortunately, ForeCyt does not provide an easy way for administrators to delete the data of their users. Instead, the person managing data generated on the instrument must log in as each individual user in order to accomplish this task.

If necessary, the software authentication scheme must first be modified from a Windows-based to a manual in-software authentication.

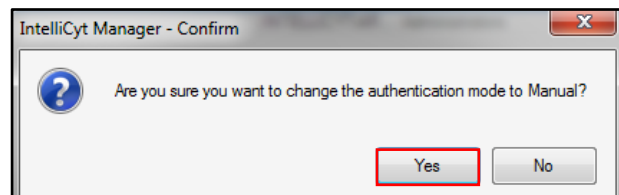
The following describes the necessary steps to gain full access to users' data and also provides some insight on the location of the various file types saved by ForeCyt.

2. Modifying the Authentication Scheme

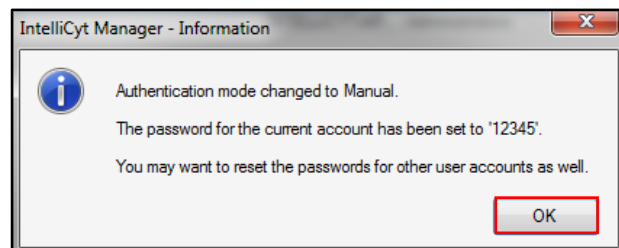
- Open IntelliCyt Manager, navigate to the Users tab, and change the Authentication Mode to Manual.



- Confirm the change by clicking Yes.



- This action will change the current account's password to 12345 and allow you to modify the passwords of other users. Click OK.



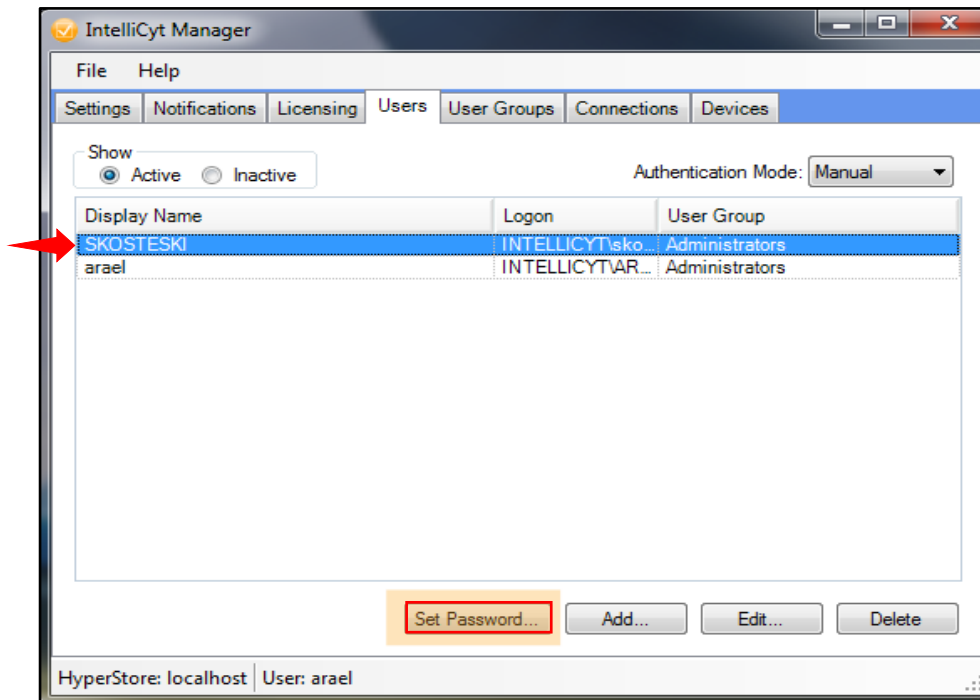
Note: Once passwords are set, they will persist when toggling between Authentication Modes.

WORK-FLOW

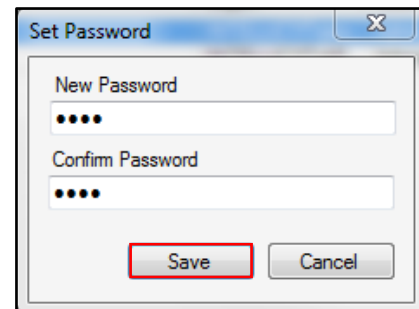
Specialized Flow Cytometry Solutions

3. Managing Users' Experiments

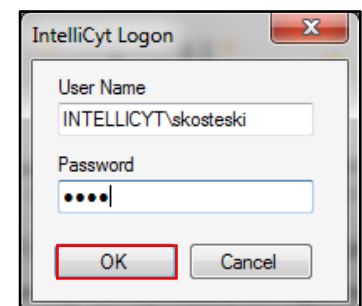
- Click on the user's name whose data you would like to manage and click the Set Password... button.



- Enter a new password at the prompt and confirm it before clicking Save.



- Close IntelliCyt Manager and open ForeCyt. Enter the user's credentials at the logon prompt.

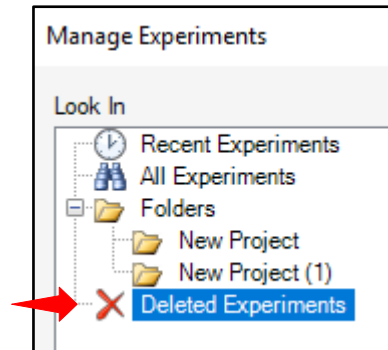
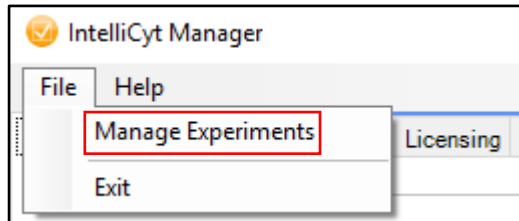


- Repeat the login process for each user. Upon completion, return to IntelliCyt Manager to revert the Authentication Mode back to Windows. This will restore everyone's login to their domain credentials.

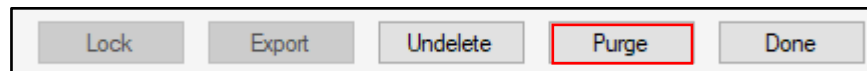
WORK-FLOW

Specialized Flow Cytometry Solutions

- Deleted data are still retrievable or can be permanently deleted. To permanently delete files, click File > Manage Experiments then select “Deleted Experiments” on the left-hand side under Look In.



- Select the data to delete permanently and click Purge.



Note: to select multiple experiments, either click Ctrl while clicking on experiments or click on the first experiment, hold down the Shift key and click the last experiment in the series you want to select.

4. Data Location

ForeCyt separates data storage into two components:

a) Backup

The default path is C:\Program Files\IntelliCyt\ForeCyt\Service\Backup and, for redundancy, the network location specified in the IntelliCyt Manager. This is where the SQL database is backed up as a BAK file. It contains all of the analysis components of the experiments (plots, gates, heat maps, metrics, etc.).

b) Files

PlateFDS

The default path is C:\Program Files\IntelliCyt\ForeCyt\Service\Files\PlateFDS. This hold all the FDS files, which are compressed versions of FCS files. All raw data are contained in these files (scatter values, time parameter, MFI, etc.).

AnalysisDocs

The default path is C:\Program Files\IntelliCyt\ForeCyt\Service\Files\AnalysisDocs. This folder contains all files attached to the experiments.

Note: while IntelliCyt Manager does not backup the Files folder, there is an option for storing data on a network share, referred to as Network Storage. The ForeCyt Enterprise Installation Guide offers valuable information regarding the possible configurations and deployment options.