

WORK-FLOW

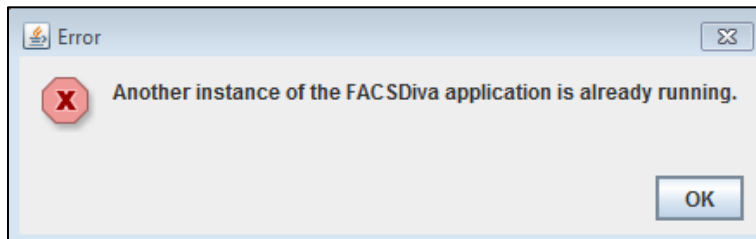
Specialized Flow Cytometry Solutions

FACSDiva Database Relocation

1. Preface

By default, the FACSDiva database is created on the D drive during software installation. However, if no second drive is present, the installer will place it on the C drive, at the root level (C:\). This is the case when the FACSDiva software is installed on a standalone one-drive PC for offline analysis.

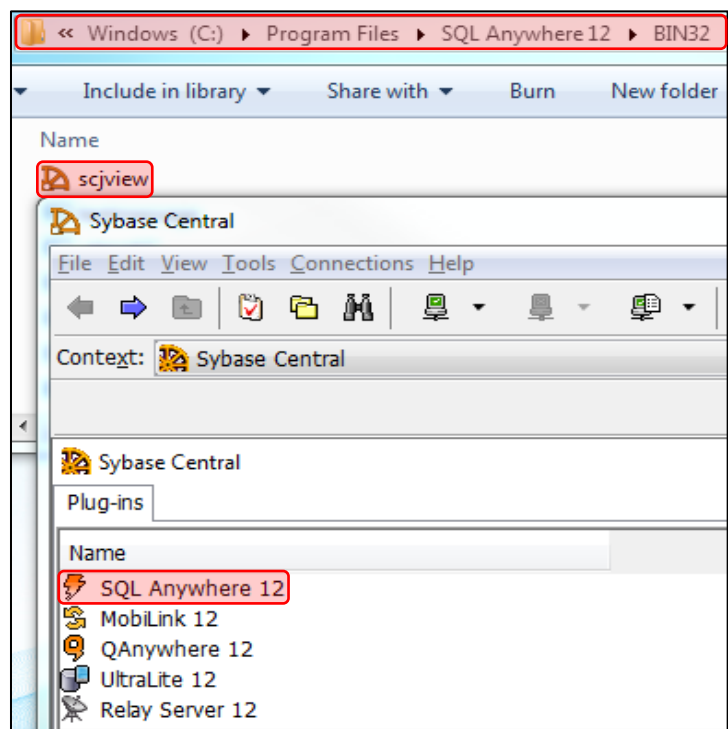
If the D drive is no longer recognized due to failure, a loose connection, or group policy settings, the following message will appear when launching the FACSDiva software:



Using the steps below, a database (new or existing) can be relocated to the C drive post installation without negative impact on the FACSDiva software.

2. Relocation

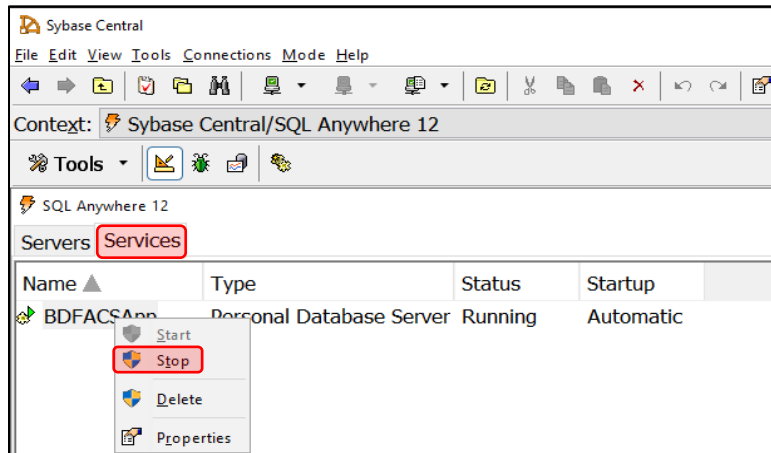
- Navigate to C:\Program Files\SQL Anywhere X\BIN32 or C:\Program Files\SQL Anywhere X\BIN64, launch Sybase Central (scjview) then double click on the SQL Anywhere X plug-in (X corresponds to the SQL version, in the example below it is 12).



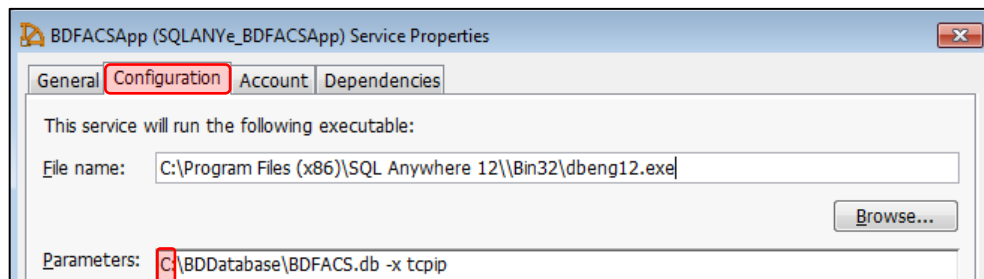
WORK-FLOW

Specialized Flow Cytometry Solutions

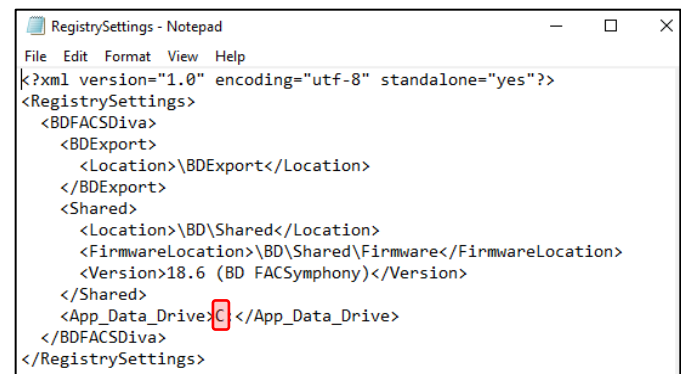
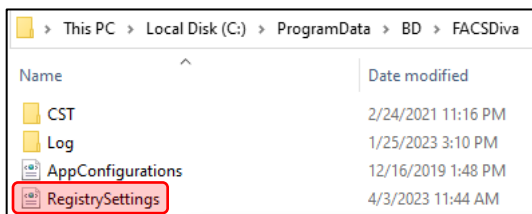
- Go to the Services tab, right-click BDFACSAApp then select 'Stop'.



- Move the BD, BDDatabase, and BDEExport folders from the D drive (if available) to the C drive. If the D drive is no longer functioning or appears offline, a new database can be used and the folders' structure recreated.
- In Sybase Central, right-click BDFACSAApp and select 'Properties'. Under the configuration tab>Parameters, change the drive letter to C and click OK.



- Right-click BDFACSAApp and select 'Start'.
- Edit the RegistrySettings file located at C:\ProgramData\BD\FACSDiva to change the drive letter to C.



- Start the FACSDiva software.