

ULA - 2" ASSEMBLY WITH LANDSCAPE MODE

**UNIRAC**  
 1411 BROADWAY BLVD. NE  
 ALBUQUERQUE, NM 87102 USA  
 PHONE: 505.242.6411  
 WWW.UNIRAC.COM

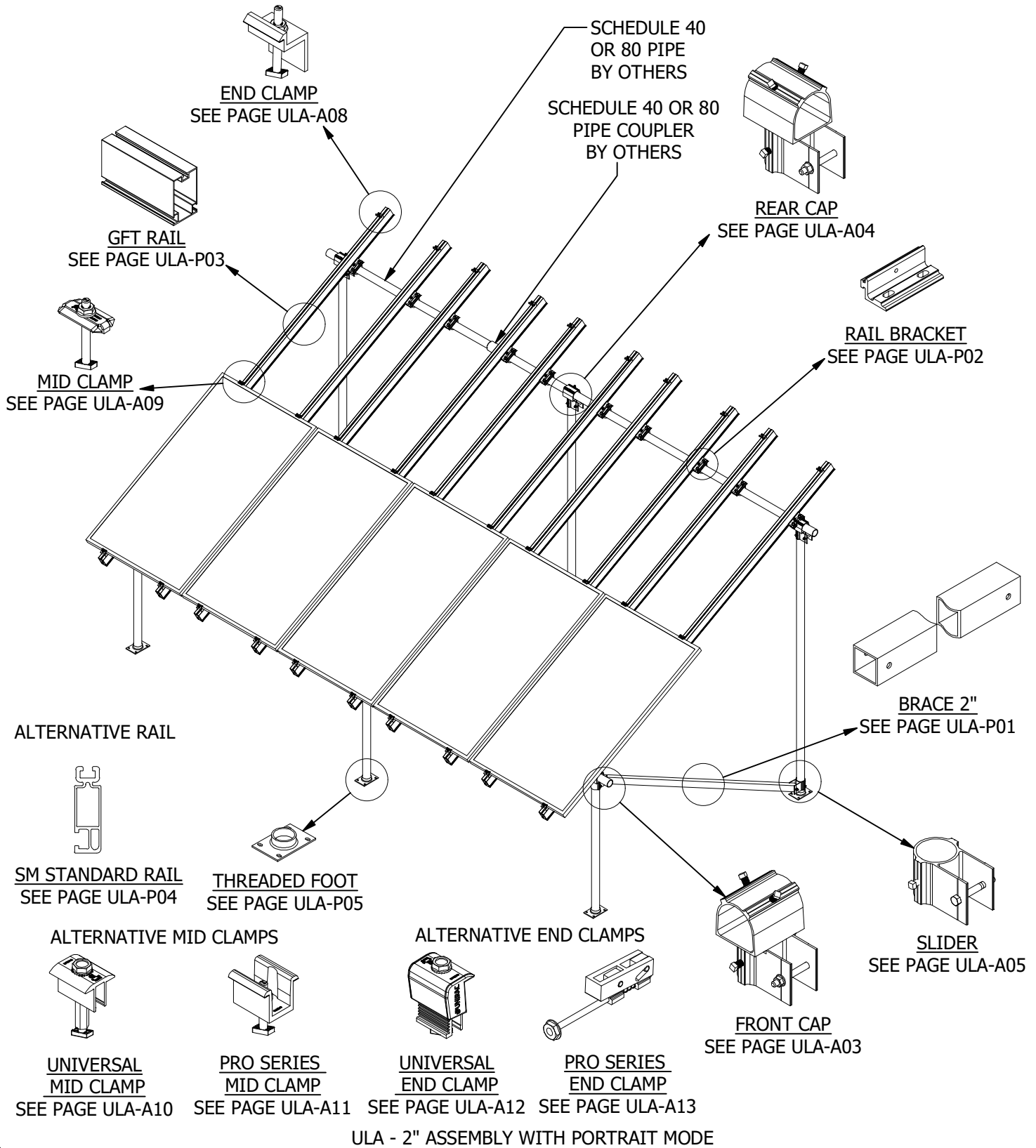
PRODUCT LINE:	ULA
DRAWING TYPE:	ASSEMBLY & PARTS
DESCRIPTION:	SYSTEM OVERVIEW
REVISION DATE:	10/16/2025

DRAWING NOT TO SCALE  
 ALL DIMENSIONS ARE  
 NOMINAL

PRODUCT PROTECTED BY  
 ONE OR MORE US PATENTS

LEGAL NOTICE

ULA-A01  
 SHEET



**UNIRAC**

1411 BROADWAY BLVD. NE  
 ALBUQUERQUE, NM 87102 USA  
 PHONE: 505.242.6411  
 WWW.UNIRAC.COM

PRODUCT LINE:	ULA
DRAWING TYPE:	ASSEMBLY & PARTS
DESCRIPTION:	SYSTEM OVERVIEW
REVISION DATE:	10/16/2025

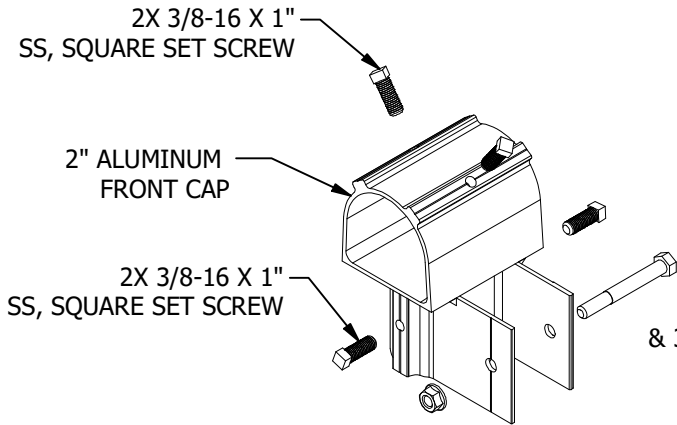
DRAWING NOT TO SCALE  
 ALL DIMENSIONS ARE  
 NOMINAL

PRODUCT PROTECTED BY  
 ONE OR MORE US PATENTS  
 LEGAL NOTICE

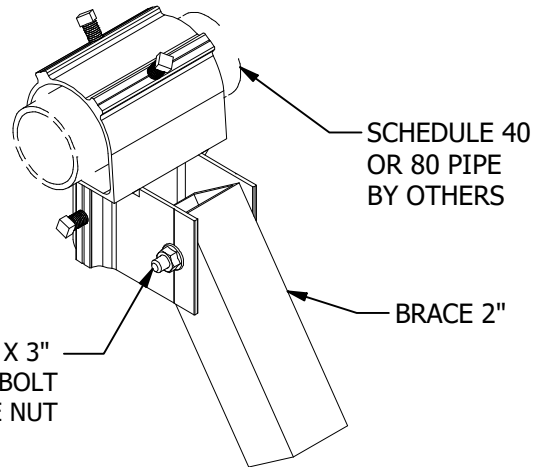
ULA-A02

SHEET

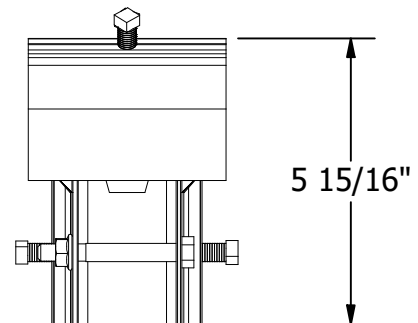
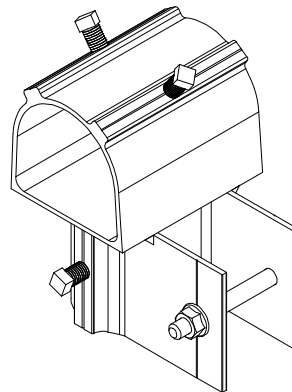
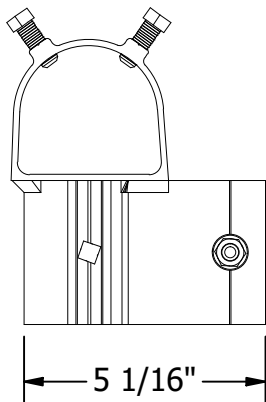
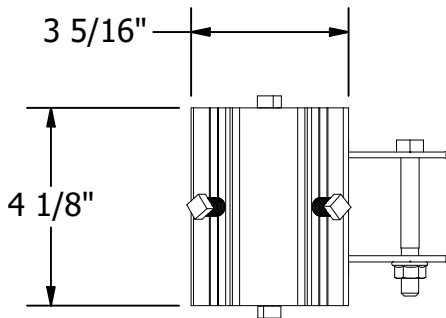
PART # TABLE	
P/N	DESCRIPTION
403211C	ULA FRONT CAP, 2", AL



EXPLODED VIEW



ASSEMBLY VIEW



**UNIRAC**

1411 BROADWAY BLVD. NE  
ALBUQUERQUE, NM 87102 USA  
PHONE: 505.242.6411  
WWW.UNIRAC.COM

PRODUCT LINE:	ULA
DRAWING TYPE:	PARTS ASSEMBLY
DESCRIPTION:	FRONT CAP
REVISION DATE:	10/16/2025

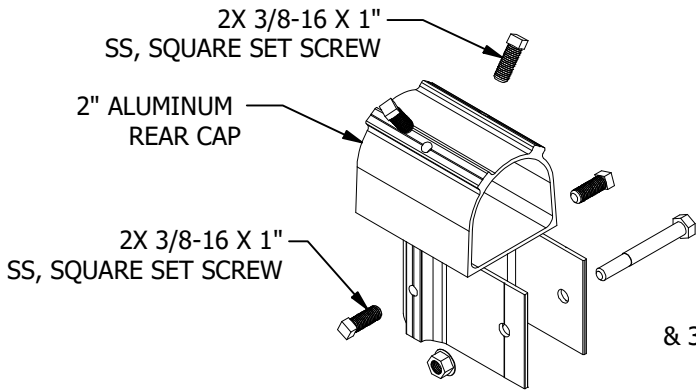
DRAWING NOT TO SCALE  
ALL DIMENSIONS ARE  
NOMINAL

PRODUCT PROTECTED BY  
ONE OR MORE US PATENTS  
LEGAL NOTICE

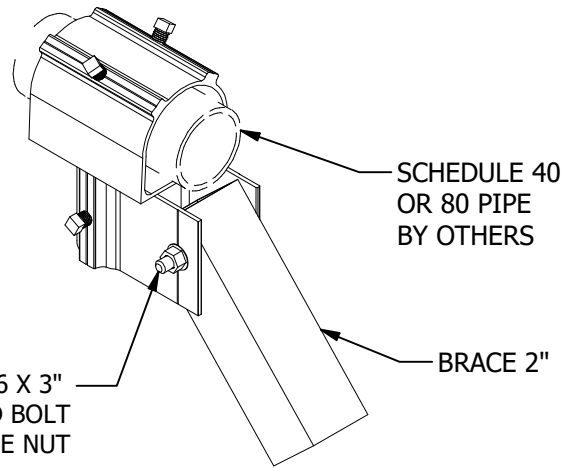
ULA-A03

SHEET

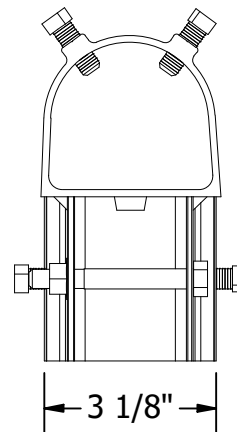
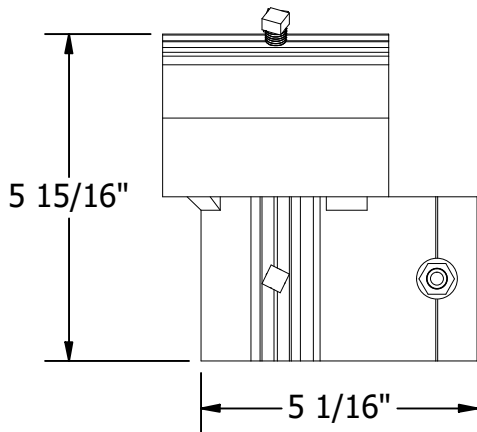
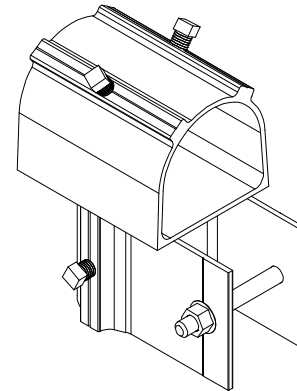
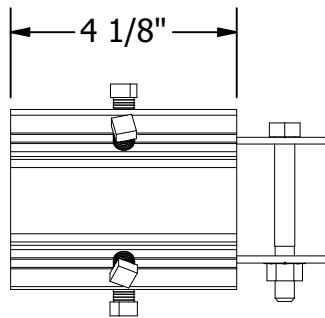
PART # TABLE	
P/N	DESCRIPTION
403214C	ULA REAR CAP, 2", AL



EXPLODED VIEW



ASSEMBLY VIEW



**UNIRAC**

1411 BROADWAY BLVD. NE  
ALBUQUERQUE, NM 87102 USA  
PHONE: 505.242.6411  
WWW.UNIRAC.COM

PRODUCT LINE:	ULA
DRAWING TYPE:	PARTS ASSEMBLY
DESCRIPTION:	REAR CAP
REVISION DATE:	10/16/2025

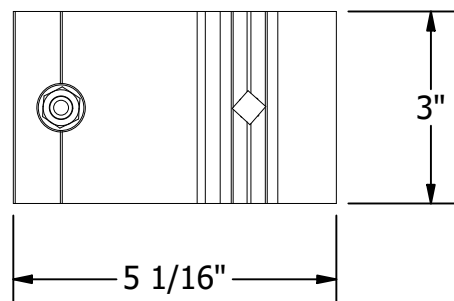
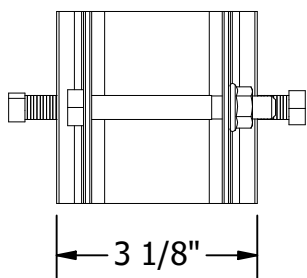
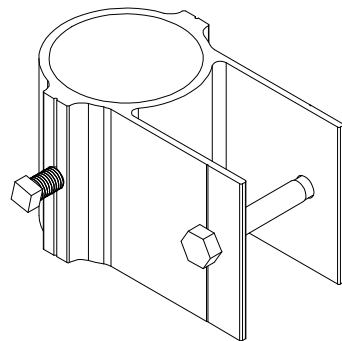
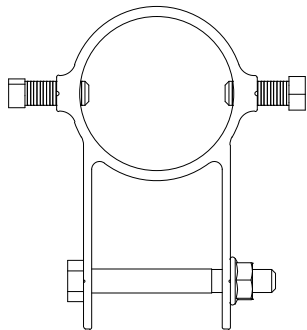
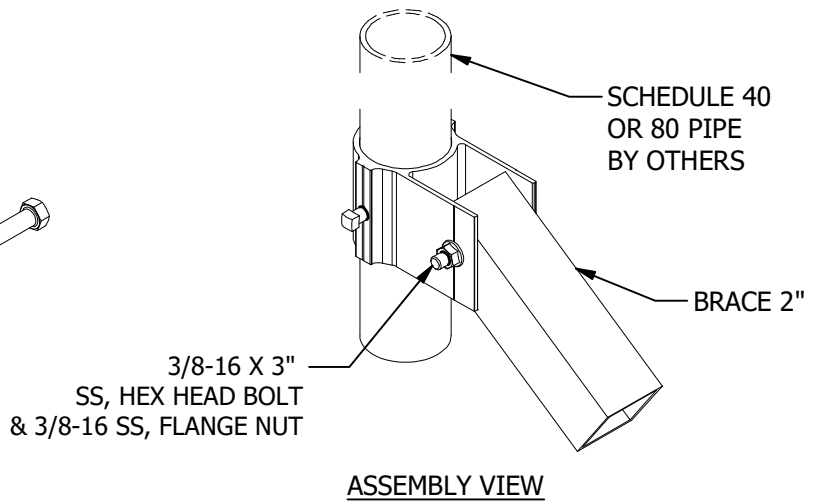
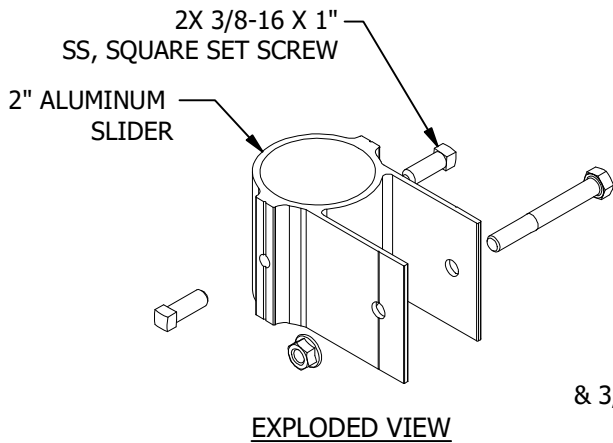
DRAWING NOT TO SCALE  
ALL DIMENSIONS ARE  
NOMINAL

PRODUCT PROTECTED BY  
ONE OR MORE US PATENTS  
LEGAL NOTICE

ULA-A04

SHEET

PART # TABLE	
P/N	DESCRIPTION
403215C	ULA SLIDER, 2", AL



**UNIRAC**

1411 BROADWAY BLVD. NE  
ALBUQUERQUE, NM 87102 USA  
PHONE: 505.242.6411  
WWW.UNIRAC.COM

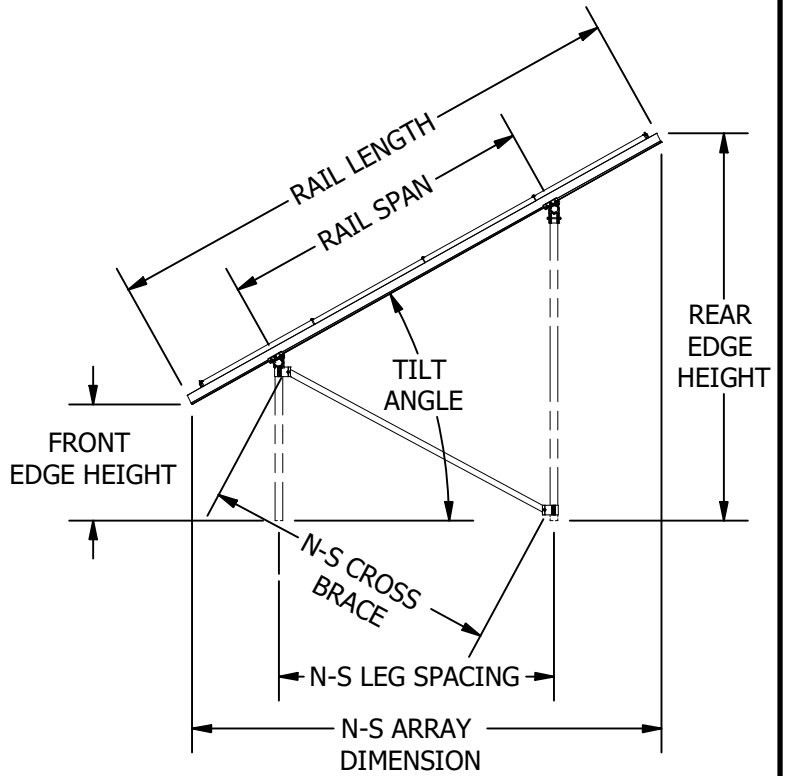
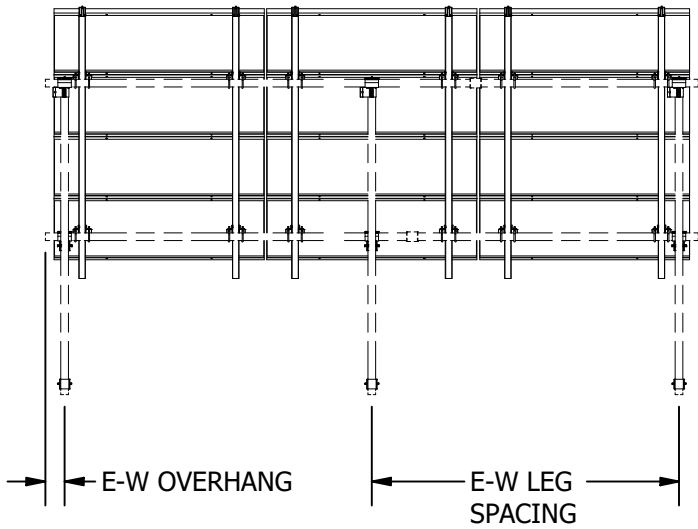
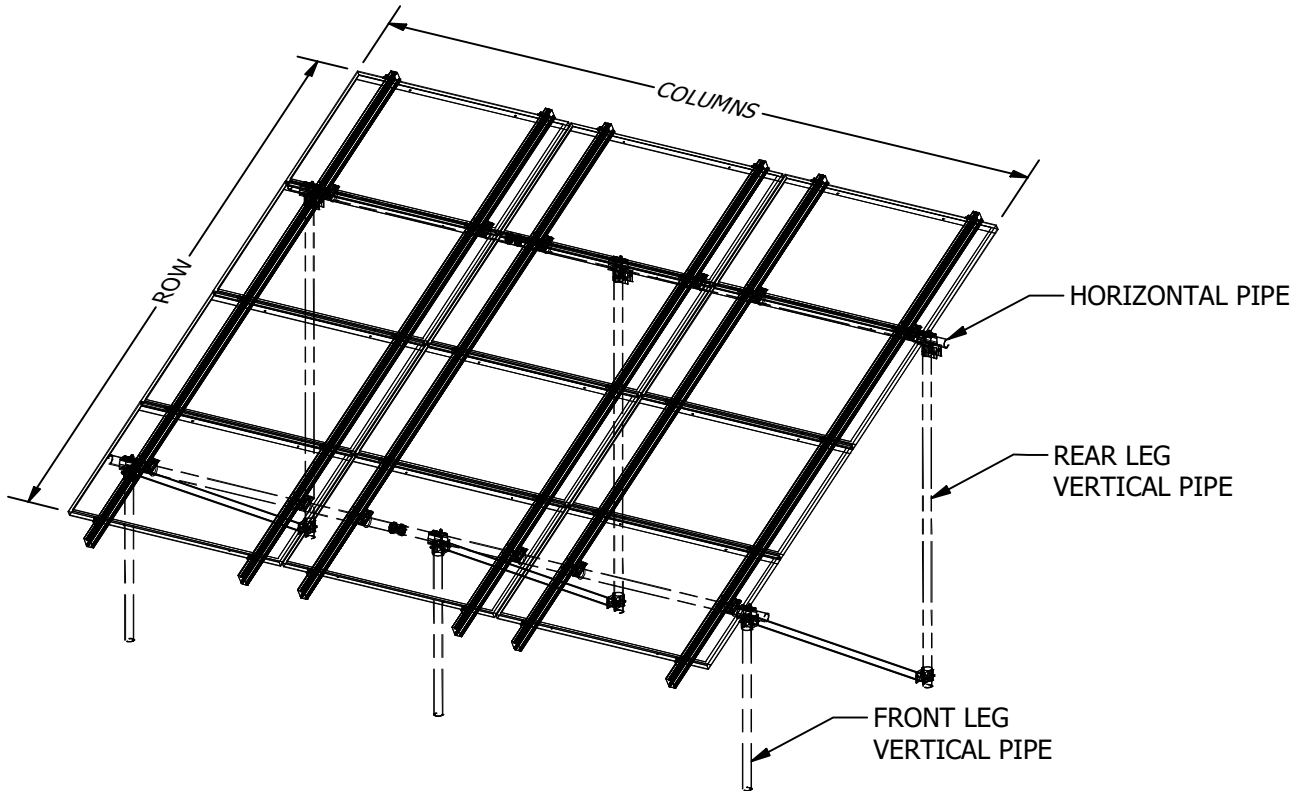
PRODUCT LINE:	ULA
DRAWING TYPE:	PART ASSEMBLY
DESCRIPTION:	SLIDER
REVISION DATE:	10/16/2025

DRAWING NOT TO SCALE  
ALL DIMENSIONS ARE  
NOMINAL

PRODUCT PROTECTED BY  
ONE OR MORE US PATENTS  
LEGAL NOTICE

ULA-A05

SHEET



ULA - 2" SYSTEM OVERVIEW

**UNIRAC**

1411 BROADWAY BLVD. NE  
ALBUQUERQUE, NM 87102 USA  
PHONE: 505.242.6411  
WWW.UNIRAC.COM

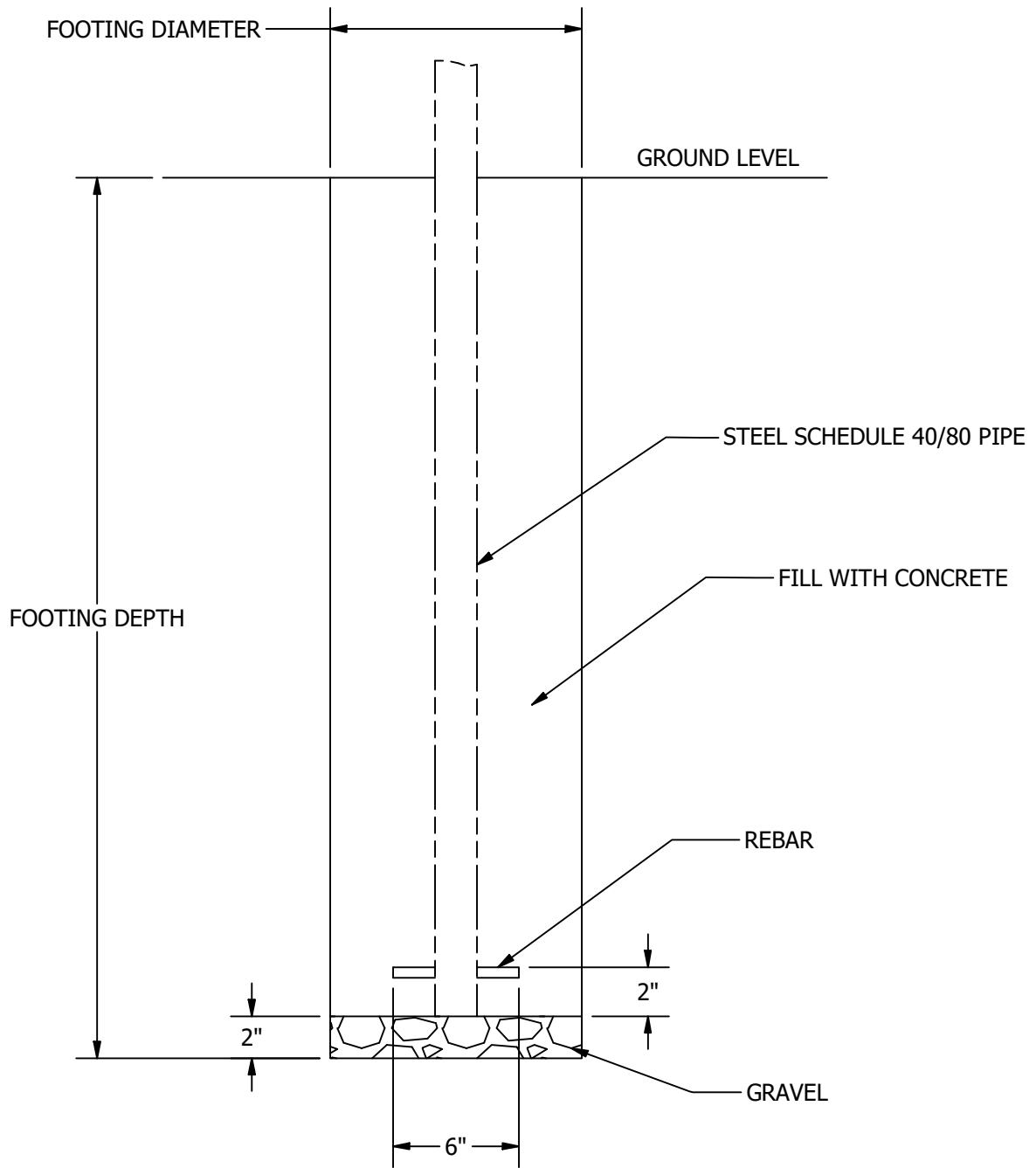
PRODUCT LINE:	ULA
DRAWING TYPE:	ASSEMBLY & PART
DESCRIPTION:	SYSTEM OVERVIEW
REVISION DATE:	10/16/2025

DRAWING NOT TO SCALE  
ALL DIMENSIONS ARE  
NOMINAL

PRODUCT PROTECTED BY  
ONE OR MORE US PATENTS  
LEGAL NOTICE

ULA-A06

SHEET



**UNIRAC**

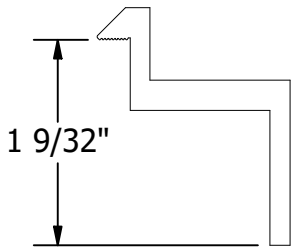
1411 BROADWAY BLVD. NE  
 ALBUQUERQUE, NM 87102 USA  
 PHONE: 505.242.6411  
 WWW.UNIRAC.COM

PRODUCT LINE:	ULA
DRAWING TYPE:	ASSEMBLY
DESCRIPTION:	ULA FOUNDATION
REVISION DATE:	10/16/2025

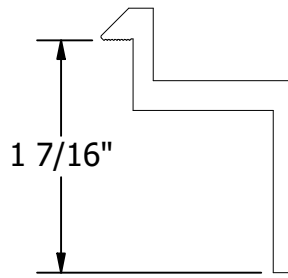
DRAWING NOT TO SCALE  
 ALL DIMENSIONS ARE  
 NOMINAL

PRODUCT PROTECTED BY  
 ONE OR MORE US PATENTS  
 LEGAL NOTICE

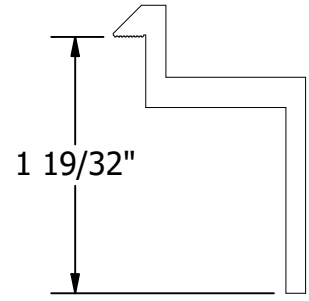
ULA-A07  
 SHEET



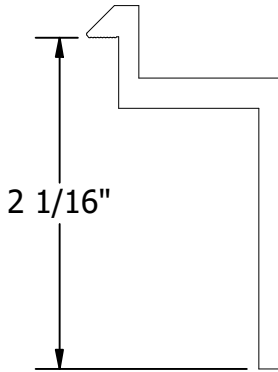
**B CLAMP**  
30mm TO 32mm  
MODULE THICKNESS  
(1.18" TO 1.26")



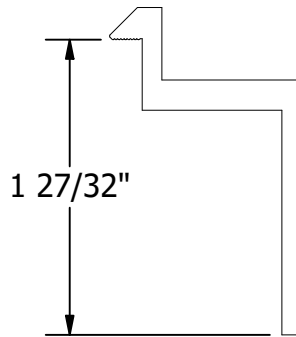
**C CLAMP**  
33mm TO 36mm  
MODULE THICKNESS  
(1.30" TO 1.42")



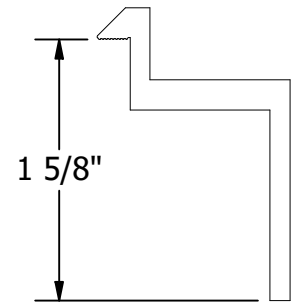
**D CLAMP**  
38mm TO 40mm  
MODULE THICKNESS  
(1.50" TO 1.57")



**E CLAMP**  
50mm TO 51mm  
MODULE THICKNESS  
(1.97" TO 2.00")

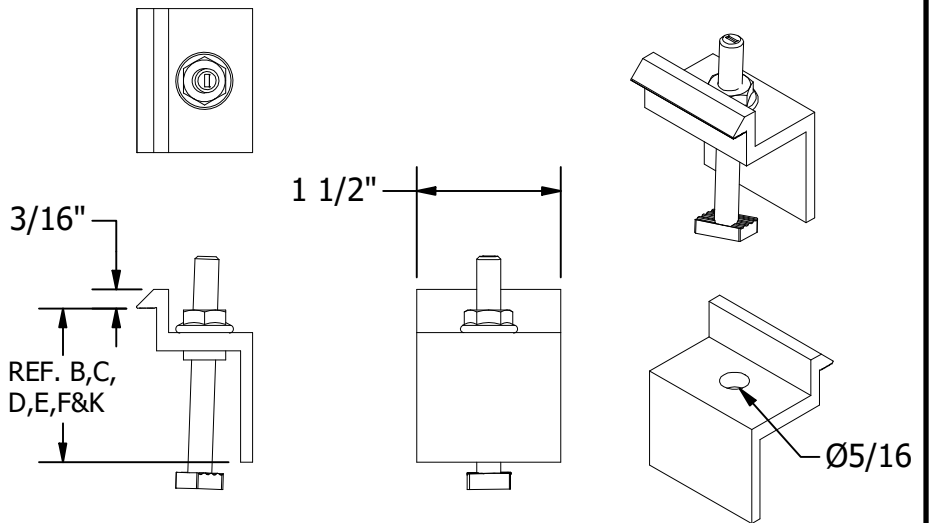


**F CLAMP**  
45mm TO 47mm  
MODULE THICKNESS  
(1.77" TO 1.85")



**K CLAMP**  
39mm TO 41mm  
MODULE THICKNESS  
(1.54" TO 1.61")

PART # TABLE	
P/N	DESCRIPTION
302021C	SM ENDCLAMP B CLR AL
302021D	SM ENDCLAMP B DRK AL
302022C	SM ENDCLAMP C CLR AL
302022D	SM ENDCLAMP C DRK AL
302023C	SM ENDCLAMP D CLR AL
302023D	SM ENDCLAMP D DRK AL
303024C	SM ENDCLAMP E CLR AL
302024D	SM ENDCLAMP E DRK AL
302025C	SM ENDCLAMP F CLR AL
302025D	SM ENDCLAMP F DRK AL
302026C	SM ENDCLAMP K CLR AL
302026D	SM ENDCLAMP K DRK AL



STANDARD SERIES END CLAMP



1411 BROADWAY BLVD. NE  
ALBUQUERQUE, NM 87102 USA  
PHONE: 505.242.6411  
WWW.UNIRAC.COM

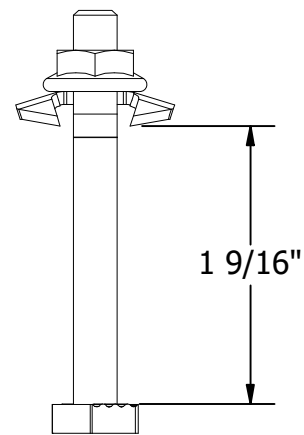
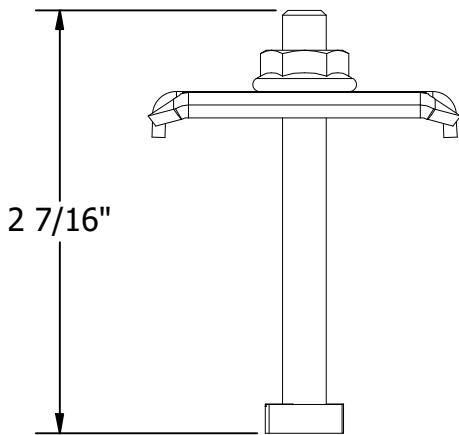
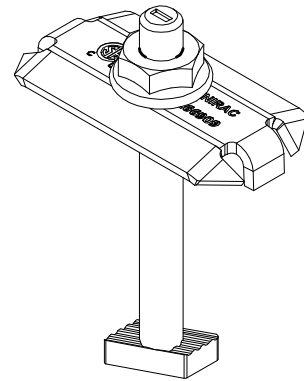
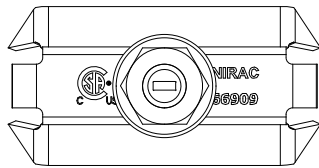
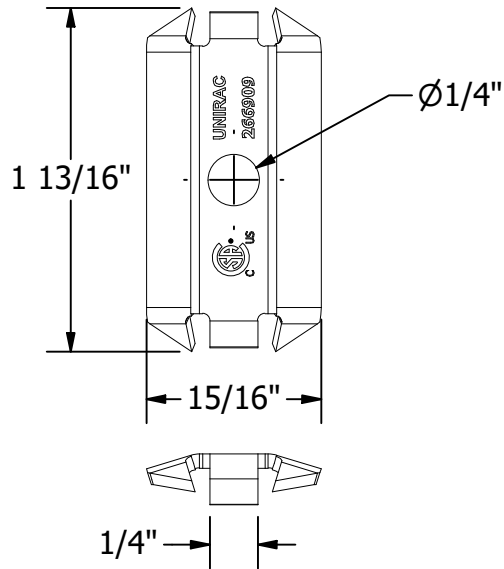
PRODUCT LINE:	ULA
DRAWING TYPE:	PART ASSEMBLY
DESCRIPTION:	SM END CLAMP
REVISION DATE:	10/16/2025

DRAWING NOT TO SCALE  
ALL DIMENSIONS ARE  
NOMINAL

PRODUCT PROTECTED BY  
ONE OR MORE US PATENTS  
LEGAL NOTICE

ULA-A08  
SHEET

PART # TABLE	
P/N	DESCRIPTION
302027C	SM BND MIDCLAMP BC SS
302027D	SM BND MIDCLAMP BC DRK SS
302028C	SM BND MIDCLAMP EF SS
302028D	SM BND MIDCLAMP EF DRK SS
302029C	SM BND MIDCLAMP DK SS
302029D	SM BND MIDCLAMP DK DRK SS



STANDARD SERIES MID CLAMP



1411 BROADWAY BLVD. NE  
ALBUQUERQUE, NM 87102 USA  
PHONE: 505.242.6411  
WWW.UNIRAC.COM

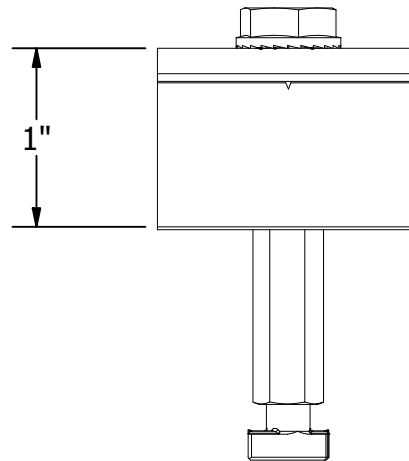
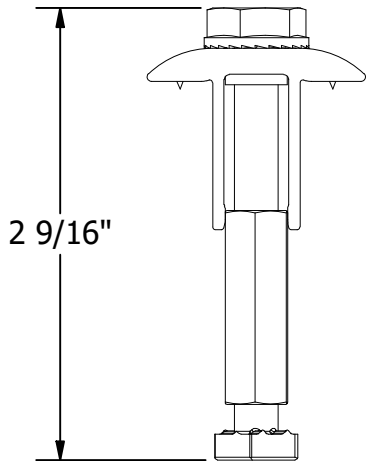
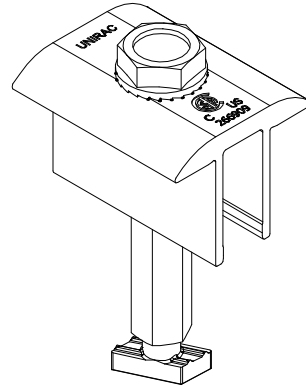
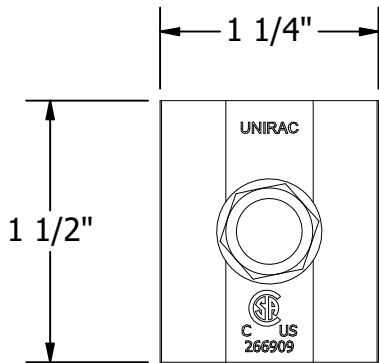
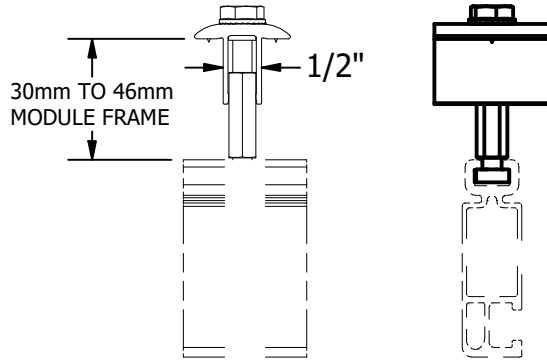
PRODUCT LINE:	ULA
DRAWING TYPE:	PART ASSEMBLY
DESCRIPTION:	SM MID CLAMP
REVISION DATE:	10/16/2025

DRAWING NOT TO SCALE  
ALL DIMENSIONS ARE  
NOMINAL

PRODUCT PROTECTED BY  
ONE OR MORE US PATENTS  
LEGAL NOTICE

ULA-A09  
SHEET

PART # TABLE	
P/N	DESCRIPTION
302045M	UNIVERSAL AF MID CLAMP - MILL
302045D	UNIVERSAL AF MID CLAMP - DRK



UNIVERSAL AF MID CLAMP

**UNIRAC**

1411 BROADWAY BLVD. NE  
ALBUQUERQUE, NM 87102 USA  
PHONE: 505.242.6411  
WWW.UNIRAC.COM

PRODUCT LINE:	ULA
DRAWING TYPE:	PART ASSEMBLY
DESCRIPTION:	UNIVERSAL AF MID CLAMP
REVISION DATE:	10/16/2025

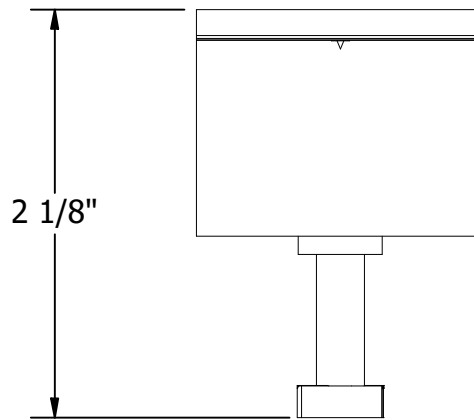
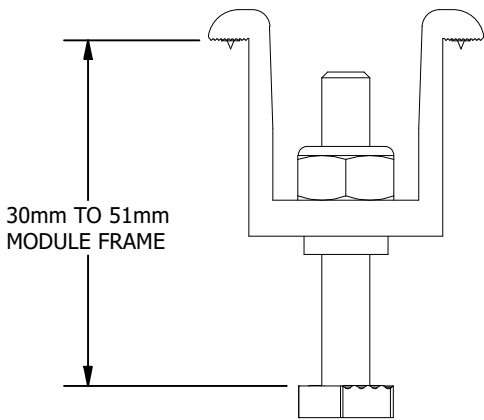
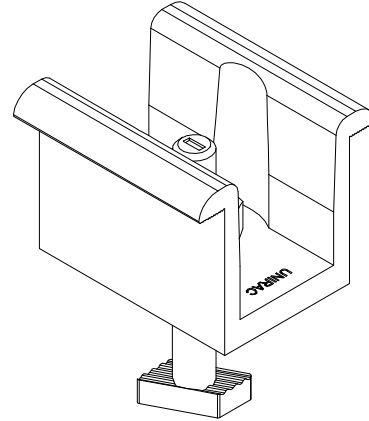
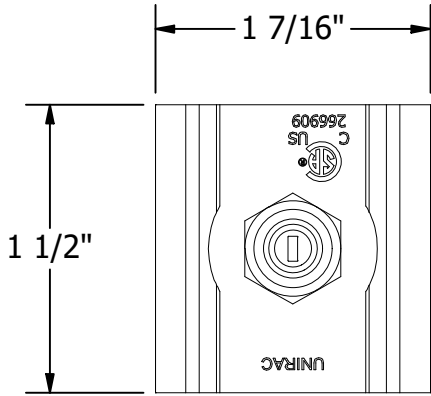
DRAWING NOT TO SCALE  
ALL DIMENSIONS ARE  
NOMINAL

PRODUCT PROTECTED BY  
ONE OR MORE US PATENTS  
LEGAL NOTICE

ULA-A10

SHEET

PART # TABLE	
P/N	DESCRIPTION
302030M	MIDCLAMP PRO - MILL
302030D	MIDCLAMP PRO - DRK



SM PRO SERIES MID CLAMP



1411 BROADWAY BLVD. NE  
 ALBUQUERQUE, NM 87102 USA  
 PHONE: 505.242.6411  
 WWW.UNIRAC.COM

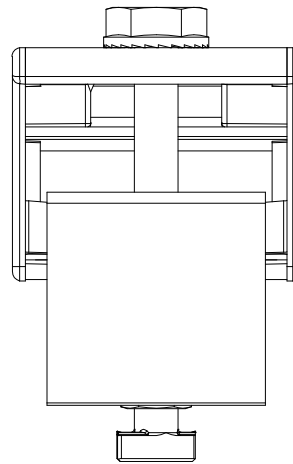
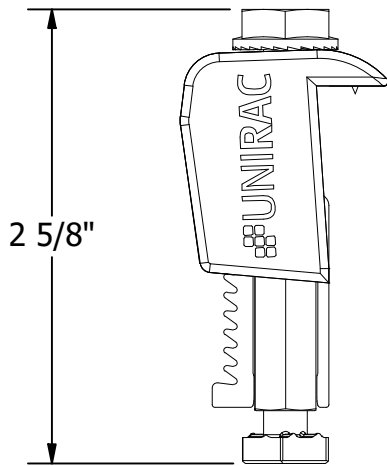
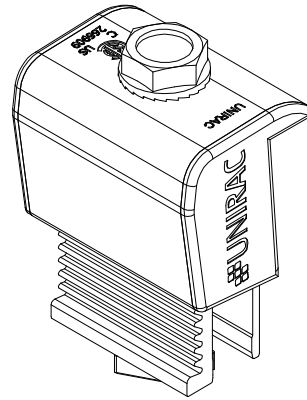
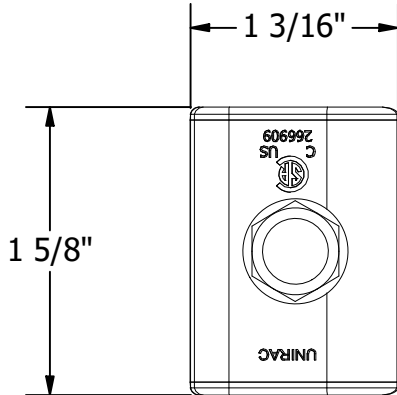
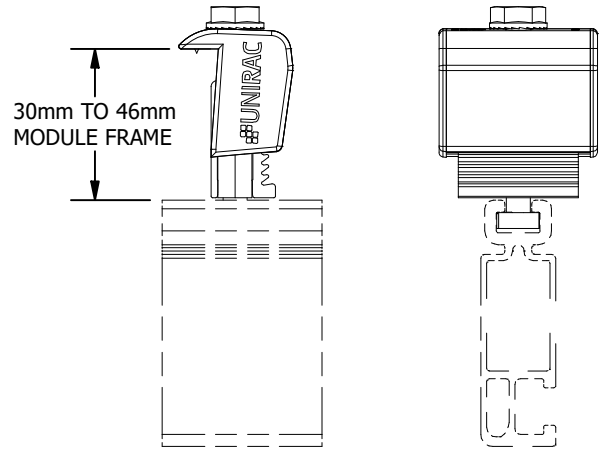
PRODUCT LINE:	ULA
DRAWING TYPE:	PART ASSEMBLY
DESCRIPTION:	PRO SERIES MID CLAMP
REVISION DATE:	10/16/2025

DRAWING NOT TO SCALE  
 ALL DIMENSIONS ARE  
 NOMINAL

PRODUCT PROTECTED BY  
 ONE OR MORE US PATENTS  
 LEGAL NOTICE

ULA-A11  
 SHEET

PART # TABLE	
P/N	DESCRIPTION
302050M	UNIVERSAL AF END CLAMP - MILL
302050D	UNIVERSAL AF END CLAMP - DRK



UNIVERSAL AF END CLAMP

**UNIRAC**

1411 BROADWAY BLVD. NE  
ALBUQUERQUE, NM 87102 USA  
PHONE: 505.242.6411  
WWW.UNIRAC.COM

PRODUCT LINE:	ULA
DRAWING TYPE:	PART ASSEMBLY
DESCRIPTION:	UNIVERSAL AF END CLAMP
REVISION DATE:	10/16/2025

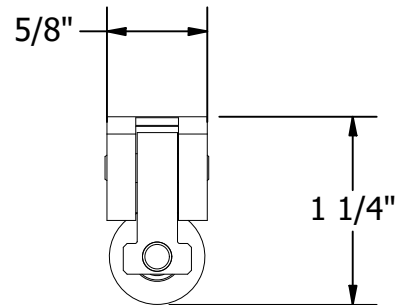
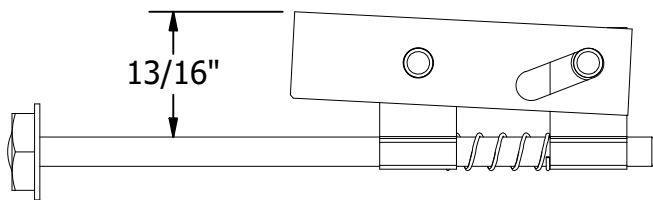
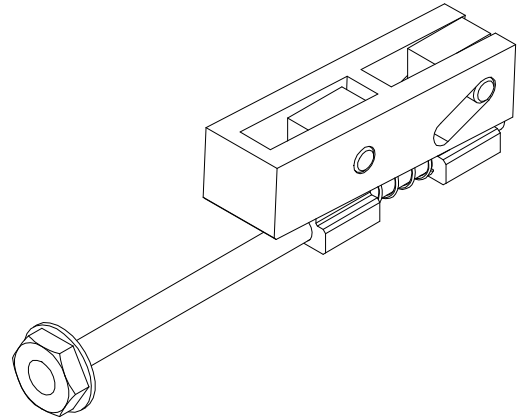
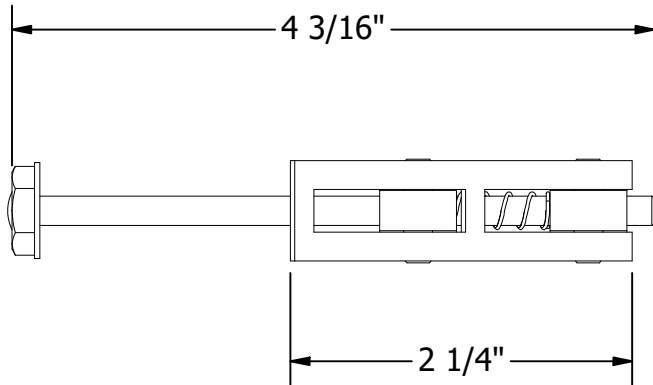
DRAWING NOT TO SCALE  
ALL DIMENSIONS ARE  
NOMINAL

PRODUCT PROTECTED BY  
ONE OR MORE US PATENTS  
LEGAL NOTICE

ULA-A12

SHEET

PART # TABLE	
P/N	DESCRIPTION
302035M	SM ENDCLAMP PRO W/END CAP



SM PRO SERIES END CLAMP



1411 BROADWAY BLVD. NE  
 ALBUQUERQUE, NM 87102 USA  
 PHONE: 505.242.6411  
 WWW.UNIRAC.COM

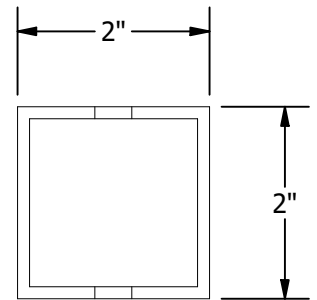
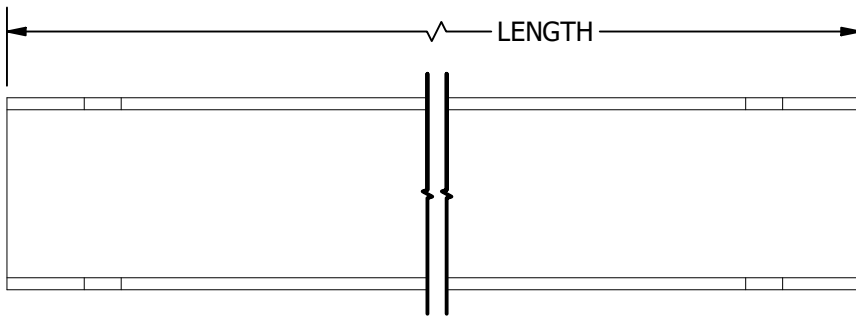
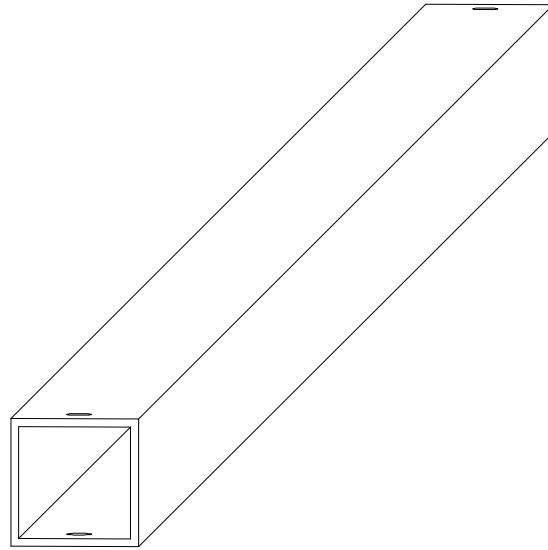
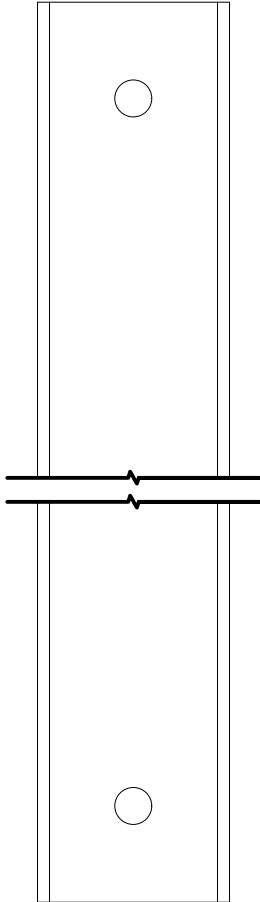
PRODUCT LINE:	ULA
DRAWING TYPE:	PART ASSEMBLY
DESCRIPTION:	PRO SERIES END CLAMP
REVISION DATE:	10/16/2025

DRAWING NOT TO SCALE  
 ALL DIMENSIONS ARE  
 NOMINAL

PRODUCT PROTECTED BY  
 ONE OR MORE US PATENTS  
 LEGAL NOTICE

ULA-A13  
 SHEET

PART # TABLE		
P/N	DESCRIPTION	LENGTH
403200C	ULA BRACE, 2", AL	7'
403201C	ULA BRACE, 2", AL	10.5'
403202C	ULA BRACE, 2", AL	14'



BRACE 2"



1411 BROADWAY BLVD. NE  
 ALBUQUERQUE, NM 87102 USA  
 PHONE: 505.242.6411  
 WWW.UNIRAC.COM

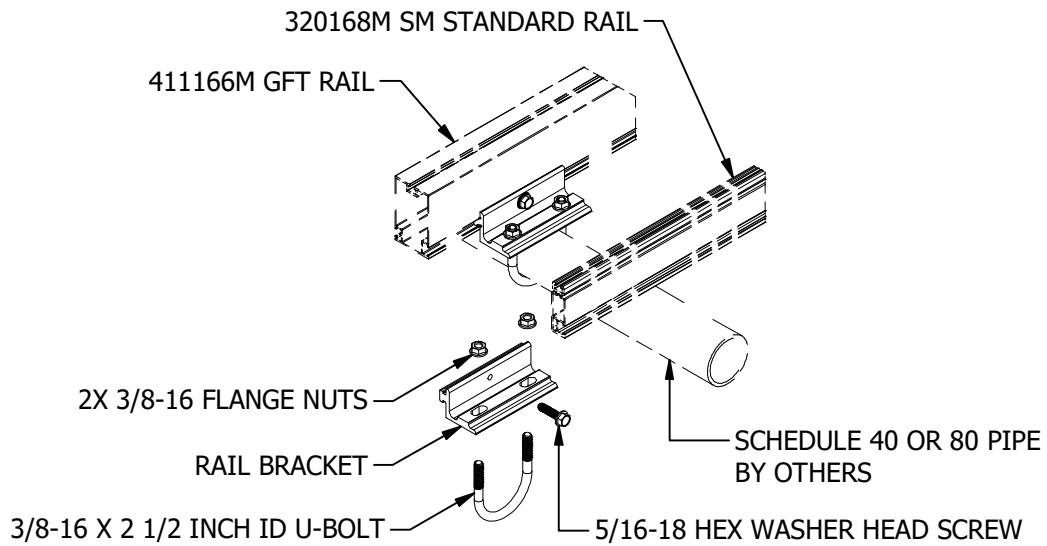
PRODUCT LINE:	ULA
DRAWING TYPE:	PART
DESCRIPTION:	BRACE
REVISION DATE:	10/16/2025

DRAWING NOT TO SCALE  
 ALL DIMENSIONS ARE  
 NOMINAL

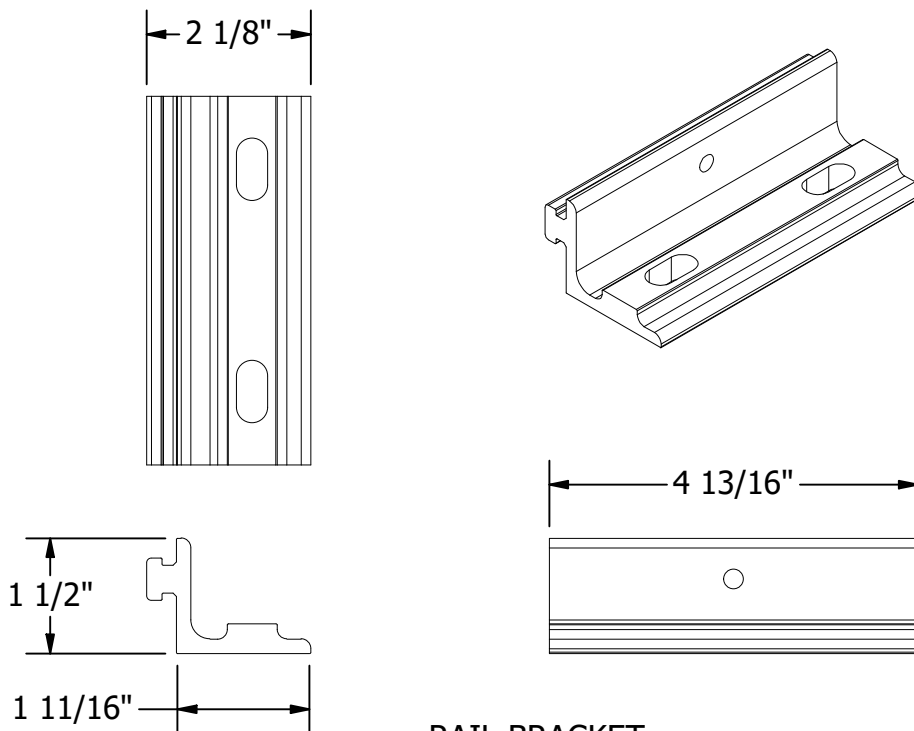
PRODUCT PROTECTED BY  
 ONE OR MORE US PATENTS  
 LEGAL NOTICE

ULA-P01  
 SHEET

PART # TABLE	
P/N	DESCRIPTION
403216C	ULA RAIL BRACKET, 2", AL



RAIL BRACKET AND COMPATIBLE RAIL ASSEMBLY



RAIL BRACKET

**UNIRAC**

1411 BROADWAY BLVD. NE  
ALBUQUERQUE, NM 87102 USA  
PHONE: 505.242.6411  
WWW.UNIRAC.COM

PRODUCT LINE:	ULA
DRAWING TYPE:	PART
DESCRIPTION:	RAIL BRACKET
REVISION DATE:	10/16/2025

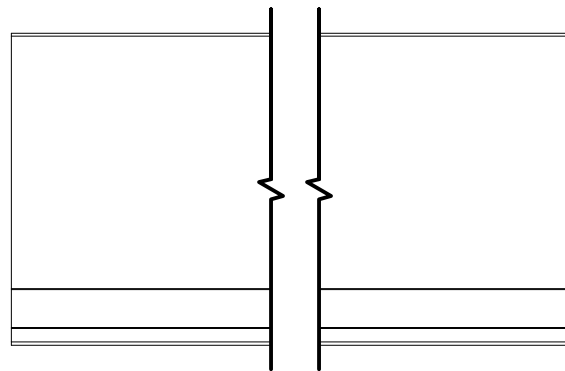
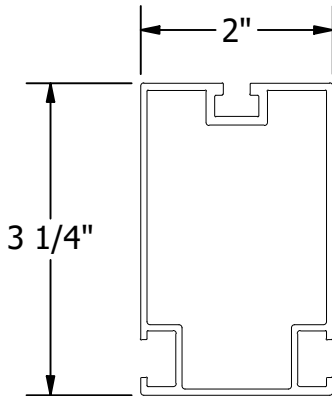
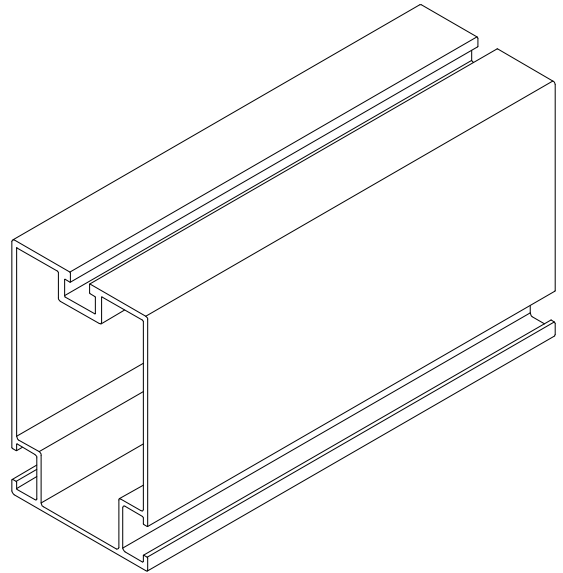
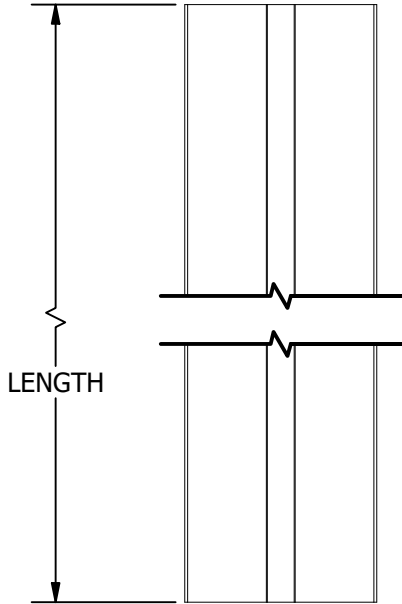
DRAWING NOT TO SCALE  
ALL DIMENSIONS ARE  
NOMINAL

PRODUCT PROTECTED BY  
ONE OR MORE US PATENTS  
LEGAL NOTICE

ULA-P02

SHEET

PART # TABLE		
P/N	DESCRIPTION	LENGTH
411166M	GFT RAIL 166" MILL	13'-10"
411246M	GFT RAIL 246" MILL	20'-6"



GFT RAIL

**UNIRAC**

1411 BROADWAY BLVD. NE  
ALBUQUERQUE, NM 87102 USA  
PHONE: 505.242.6411  
WWW.UNIRAC.COM

PRODUCT LINE:	ULA
DRAWING TYPE:	PART
DESCRIPTION:	GFT RAIL
REVISION DATE:	10/16/2025

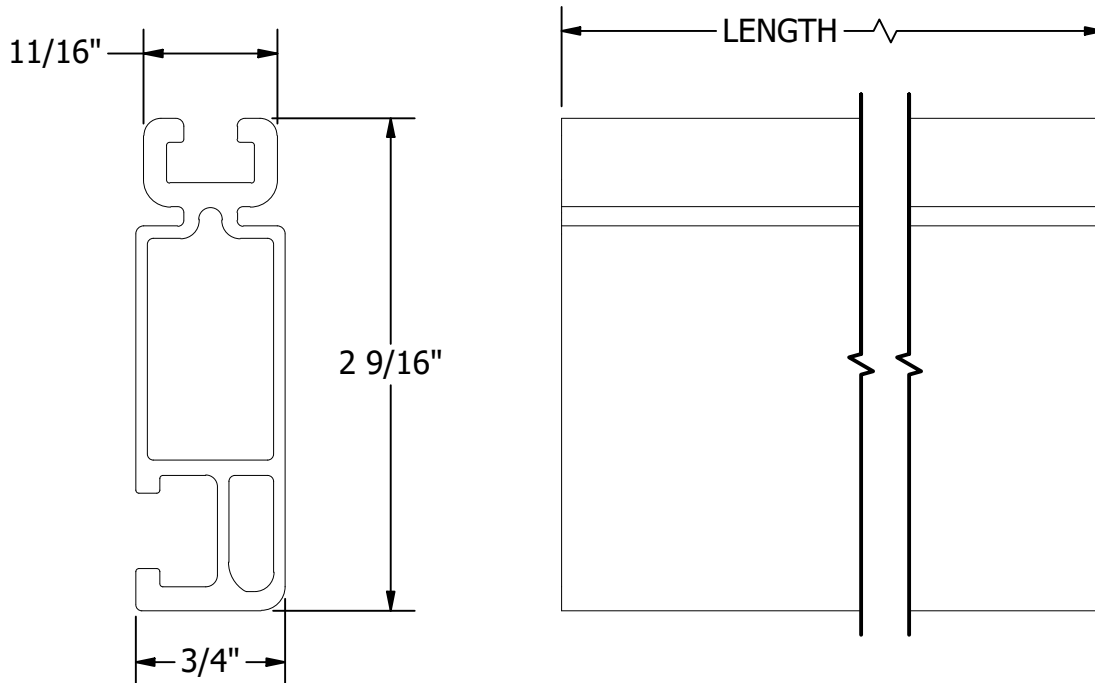
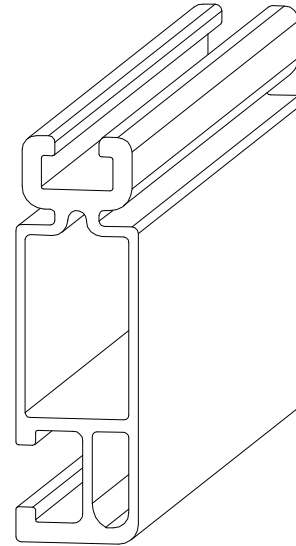
DRAWING NOT TO SCALE  
ALL DIMENSIONS ARE  
NOMINAL

PRODUCT PROTECTED BY  
ONE OR MORE US PATENTS  
LEGAL NOTICE

ULA-P03

SHEET

PART # TABLE		
P/N	DESCRIPTION	LENGTH
320132M	SM RAIL 132" MILL	132"
310132C	SM RAIL 132" CLR	132"
320168M	SM RAIL 168" MILL	168"
310168C	SM RAIL 168" CLR	168"
310168D	SM RAIL 168" DRK	168"
320208M	SM RAIL 208" MILL	208"
310208C	SM RAIL 208" CLR	208"
320246M	SM RAIL 246" MILL	246"
310246C	SM RAIL 246" CLR	246"
310246D	SM RAIL 246" DRK	246"



SM STANDARD RAIL



1411 BROADWAY BLVD. NE  
 ALBUQUERQUE, NM 87102 USA  
 PHONE: 505.242.6411  
 WWW.UNIRAC.COM

PRODUCT LINE:	ULA
DRAWING TYPE:	PART
DESCRIPTION:	SM STANDARD RAIL
REVISION DATE:	10/16/2025

DRAWING NOT TO SCALE  
 ALL DIMENSIONS ARE  
 NOMINAL

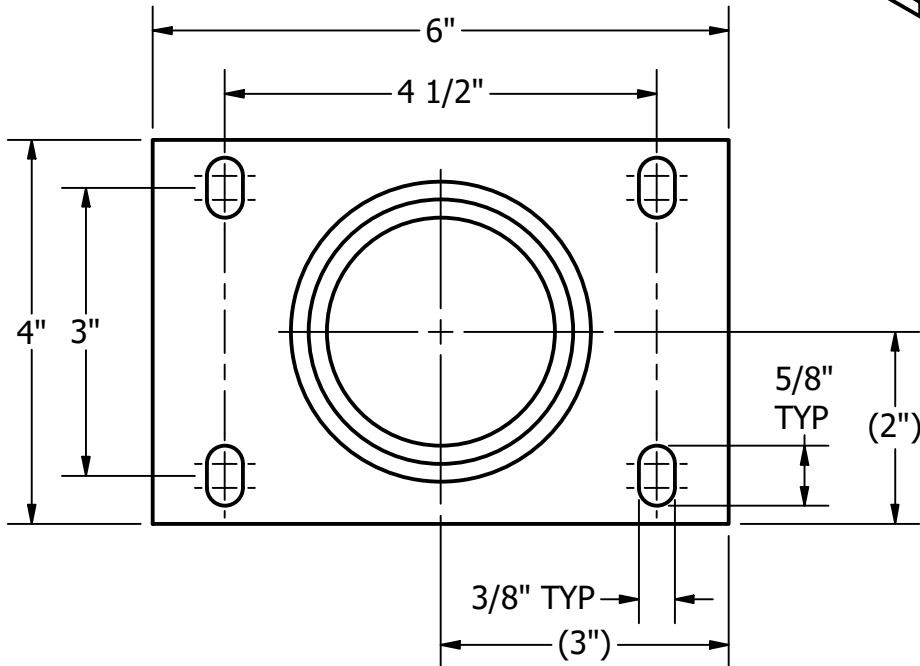
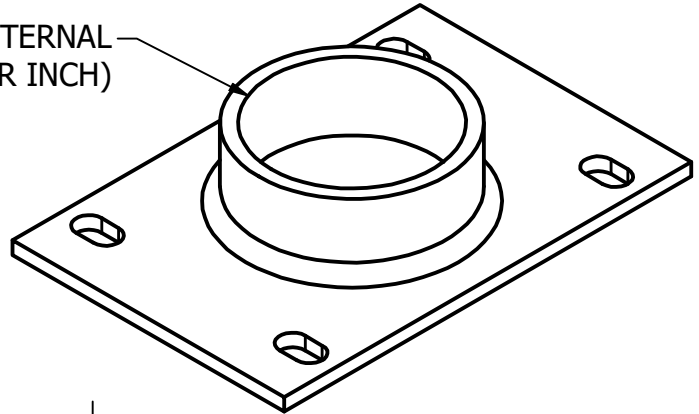
PRODUCT PROTECTED BY  
 ONE OR MORE US PATENTS  
 LEGAL NOTICE

ULA-P04

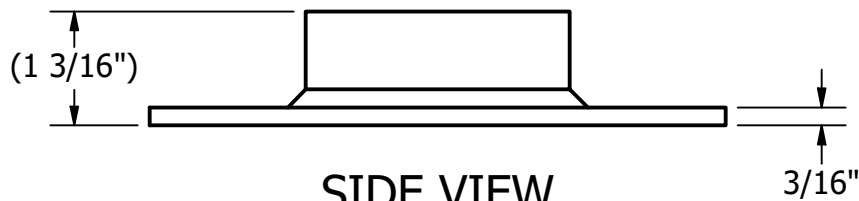
SHEET

PART # TABLE	
P/N	DESCRIPTION
403216S	ULA THREADED FOOT, 2", STL

2 3/8" DIAMETER INTERNAL  
PIPE THREAD (11.5 THREADS PER INCH)



TOP VIEW



SIDE VIEW

**UNIRAC**

1411 BROADWAY BLVD. NE  
ALBUQUERQUE, NM 87102 USA  
PHONE: 505.242.6411  
WWW.UNIRAC.COM

PRODUCT LINE:	ULA
DRAWING TYPE:	PART
DESCRIPTION:	STEEL THREADED FOOT
REVISION DATE:	10/16/2025

DRAWING NOT TO SCALE  
ALL DIMENSIONS ARE  
NOMINAL

PRODUCT PROTECTED BY  
ONE OR MORE US PATENTS  
LEGAL NOTICE

ULA-P05

SHEET