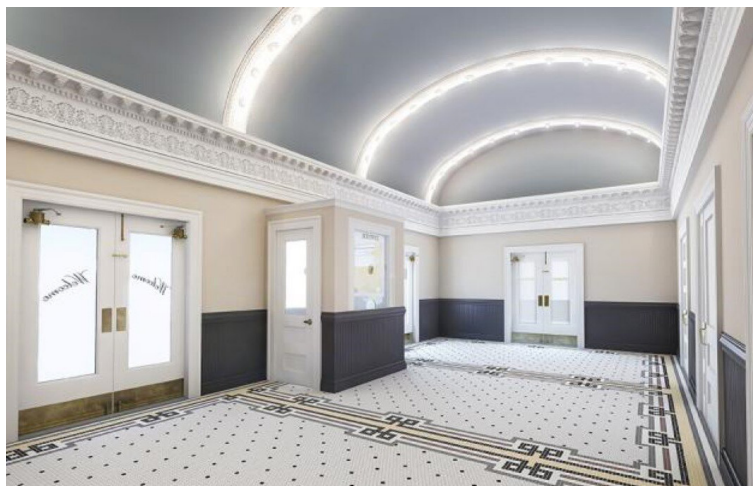
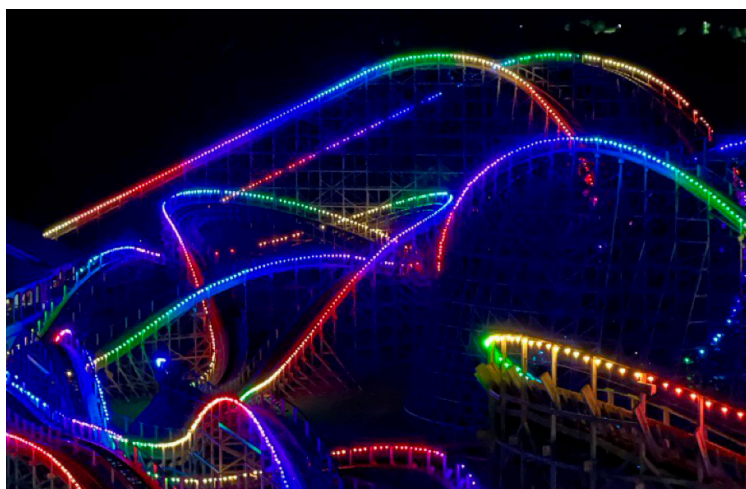


## Intelligently controlled, low-wattage shatterproof outdoor-rated systems

- Redesigned! Improved! Brighter!
- RGBW, Dynamic White, and "Filament" versions
- Shatterproof! Indoor/outdoor!
- 2-wire system – Power and data share the same two wires
- Classic "Retro" look. Standard Edison base, retrofits in existing systems



**Worldwide Exclusive Distribution**



Los Angeles  
 +1 818.899.8818

London  
 +44 (0)20.8574.9700

New York  
 +1 201.896.8600

**tmb**  
 www.tmb.com

Toronto  
 +1 519.538.0888

Beijing  
 +86 10.8492.1587

Riga  
 +371 6389 8886

Lamp Specifications				
Part Numbers	IMSMK2.6RGBWW	IMSMK2.5DW	IMSMK2.6V12	IMSMK2.6S14CF
LED Type	RGBW	Dynamic White	V12 "Filament"	S14 Curly Filament
LEDs	4 x Cree LEDs	4 x Cree LEDs	12 x LEDs	1 x LED
Lumen Output (LM)	Red - 15.19 lm Green - 31.89 lm Blue - 5.53 lm Warm White - 18.76 lm RGBW at Full - 66.24 lm	Cool: 64.49 lm Warm: 40.35 lm C/W at Full: 103.28 lm	53.3 lm	120 lm
	50,000 hours			
CCT	n/a	2200-6500K	2200K	2000K
Power Consumption	1.8W	1.8W	1.6W	1.5W
Screw Base	E26			
Power Input	24 VDC			
Data Input	DMX			
Dimensions	Lamp Only (dia, height) 1.78, 1.57 in. [45, 40 mm]		Lamp Only (dia, height) 1.75, 2.36 in. [45, 60 mm]	
	Lamp + Socket (width, height) 1.78, 2.64 in. [45, 67 mm]		Lamp + Socket (width, height) 1.75, 3.5 in. [45, 85 mm]	
Field Addressable	Optional remote Hand Held Programmer (HHP)			
DMX Channels <sup>1</sup>	4	2	1	1
Material	Frosted Polycarbonate, UV Resistant, Shatterproof. E26 metal screw base <sup>2</sup>	Frosted Polycarbonate, UV Resistant, Shatterproof. E26 metal screw base <sup>2</sup>	Transparent Polycarbonate, UV Resistant, Shatterproof. E26 metal screw base <sup>2</sup>	Transparent Polycarbonate, UV Resistant, Shatterproof. E26 metal screw base <sup>2</sup>
Lamp Shape	G-type lamp			S14-type lamp
Exterior Color	White	White	Clear	Clear
Operating Temp	-4 °F to +104 °F [-20 °C to +40 °C]			

<sup>1</sup> RGBWW Lamps: 4 DMX channels per lamp. Maximum possible uniquely addressed lamps per DMX universe – 128  
 Dynamic White Lamps: 2 DMX channels per lamp. Maximum possible uniquely addressed lamps per DMX universe – 256  
 V12 "Filament" Lamps: 1 DMX channel per lamp. Maximum possible uniquely addressed lamps per DMX universe – 512  
<sup>2</sup> For outdoor use application of a thin coat of silicone grease to bulb's metal screw base before inserting in socket is recommended.

Hand Held Programmer Specifications	
Part Number	IMSMK2HHP
Power Input	5V micro USB
Battery	Internal lithium-ion rechargeable battery
Dimensions (HxWxD)	7.25 x 3.25 x 1.375 in. (184 x 83 x 35 mm)
Weight	0.8 lbs. (0.36 kg)
Connector	E27 threadless socket



- Upload latest firmware to lamps
  - E27 threadless socket to quickly test, color check, and update individual lamps
  - Test lamp systems w/various color & intensity presets
  - DMX address lamps
  - Connect to Universe Drive via onboard 5-pin connector.
- Output test patterns to fully-loaded lamp strings without a console!



## Specifications

**ProPlex IMS Universe Drive Multiple Universe Drive 2U**



**ProPlex IMS Universe Drive Simple Universe Drive 2U**



**ProPlex IMS Universe Drive Portable Mount**



**ProPlex IMS Universe Drive IP65**



**ProPlex IMS Universe Drive DIN, In/1, Thru/1, Out/2**



Part Number	PPMK2MUD	PPMK2SUD	PPMK2UD	PPMK2IPUD	PPMK2DINUD
Operating Voltages	90-260 VAC	90-260 VAC	90-260 VAC	90-260 VAC	24 VDC
Frequency Tolerance	50-60 Hz				
Power Consumption	1200 W	1200 W	300 W	300 W	External 250 W PSU required
Number of Outputs	8	8	2	2	2
Output Voltage	24 VDC				
Number of Universes	4	1	1	1	1
Power Input	Neutrik PowerCON NAC3MPA-1	Neutrik PowerCON NAC3MPA-1	Neutrik PowerCON NAC3MPA-1	Phoenix MSTB 2+2-terminal <sup>3</sup>	Phoenix MSTB 2-terminal <sup>3</sup>
Power Thru	None	None	Neutrik PowerCON NAC3MPB-1	None	None
DMX512 Input	Neutrik XLR-5	Neutrik XLR-5	Neutrik XLR-5	Phoenix MSTB 3-terminal <sup>3</sup>	Phoenix MSTB 3-terminal <sup>3</sup>
DMX512 Thru	Neutrik XLR-5	Neutrik XLR-5	Neutrik XLR-5	Phoenix MSTB 3-terminal <sup>3</sup>	Phoenix MSTB 3-terminal <sup>3</sup>
Ethernet Input	Neutrik EtherCON	None	None	None	None
Power/Data Outputs	8x Neutrik SpeakON NL2 2-pole	8x Neutrik SpeakON NL2 2-pole	2x Neutrik SpeakON NL2 2-pole	2x Phoenix MSTB 2-terminal <sup>3</sup>	2x Phoenix MSTB 2-terminal <sup>3</sup>
Max. Cable Length	246.06w ft. (75m) to last lamp, max. 64 lamps, using 14 AWG / 2.5 mm <sup>2</sup> 2-conductor festoon cable <sup>4</sup>				
Operating Temp	-22 to +104 °F [-30 to +40 °C]	-22 to +104 °F [-30 to +40 °C]	-22F° to +122F° [-30C° to +50°]	-22F° to +122F° [-30C° to +50°]	-22F° to +122F° [-30C° to +50°]
L80 Rating	50,000 hours	50,000 hours	50,000 hours	50,000 hours	50,000 hours
Dimensions (HxWxD)	3.5 x 19 x 12 in. [90 x 483 x 305 mm]	3.5 x 19 x 12 in. [90 x 483 x 305 mm]	With yoke: 4.75 x 8 x 10.7 in. [120.6 x 203.2 x 271.5 mm] w/o yoke: 3.44 x 7.75 x 10.7 in. [87.4 x 196.8 x 271.5 mm]	4.53 x 10.75 x 10 in. [115 x 273 x 254 mm]	1.55 x 4.1 x 3.63 in. [39.5 x 104 x 92.3 mm]
Shipping Dimensions (HxWxD)	8 x 21 x 16 in. [203 x 533 x 406 mm]	8 x 21 x 16 in. [203 x 533 x 406 mm]	7.3 x 10.25 x 13.5 in. [186 x 261 x 343 mm]	8.125 x 13.5 x 12.5 in. [206.375 x 342.9 x 317.5mm]	4 x 6.625 x 6.625 in. [101.6 x 168.3 x 168.3 mm]
Weight	15 lb [6.8 kg]	16.3 lb [7.4 kg]	8.7 lb [3.9 kg]	7.45 lb [3.379 kg]	0.38 lb [174 g]
Shipping Weight	17 lb [7.7 kg]	18.3 lb [8.3 kg]	9.5 lb [4.3 kg]	8.8lb [3.99 kg]	0.65 lb [0.28 kg]
Color	Blue	Blue	Blue	Silver	Blue / Silver

<sup>3</sup> Included

<sup>4</sup> See page 4 for Cable Length / Lamp Spacing Tables

### BTU Values

ProPlex IMS Universe Drive Multiple Universe Drive 2U	313.8
IMS Bulb RGBW	4.8
IMS Bulb DynamicWhite	4.8

Los Angeles  
+1 818.899.8818

London  
+44 (0)20.8574.9700

New York  
+1 201.896.8600

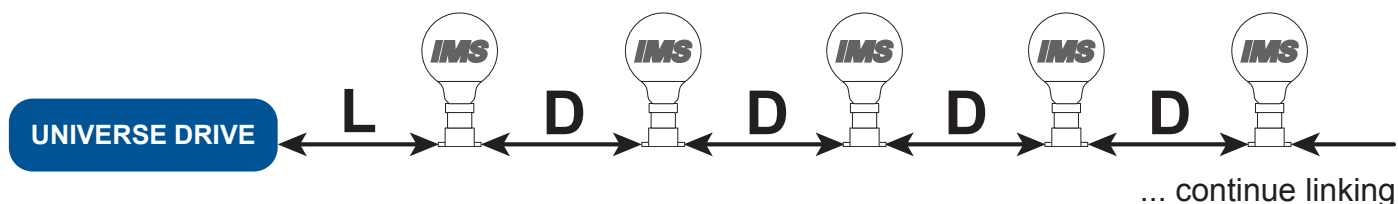
**tmb**  
www.tmb.com

Toronto  
+1 519.538.0888

Beijing  
+86 10.8492.1587

Riga  
+371 6389 8886

**Cable Length / Lamp Spacing Tables\***



if D = 6in (15 cm)			if D = 12in (30 cm)			if D = 18in (50 cm)		
Cable setting	L	Max.	Cable setting	L	Max.	Cable setting	L	Max.
Short	3 ft	64	Short	3 ft	51	Short	3 ft	41
Medium	16 ft	64	Medium	16 ft	64	Medium	3 ft	64
Long	65 ft	64	Long	32 ft	64	Long	3 ft	64
Short with transcoding	16 ft	64	Short with transcoding	16 ft	64	Short with transcoding	3 ft	62
Medium with transcoding	82 ft	64	Medium with transcoding	65 ft	64	Medium with transcoding	49 ft	64
Long with transcoding	180 ft	64	Long with transcoding	164 ft	64	Long with transcoding	147 ft	64

if D = 36in (100 cm)		
Cable setting	L	Max.
Short	3 ft	30
Medium	3 ft	46
Long	3 ft	64
Short with transcoding	3 ft	45
Medium with transcoding	3 ft	64
Long with transcoding	131 ft	64

LEGEND	
	IMS Lamp
Max.	Max. amount of working lamps
L	Length of cable between Universe Drive and first lamp
D	Distance between lamps (cm)

\* The above settings are recommended using IMS122CL3 cable. Settings may vary depending on cable type, IMS control data transfer rate, and other conditions. The settings are examples of different scenarios and their tested results.

**Firefly Festoon Cables / Commercial Grade**

- IP54 Rated. Weatherproof flange protects lamp holders and lamp bases from moisture.
- Round cable is available in suspended and inline versions.
- Round cables are ETL Listed and retain listing even when cut to length in the field
- Cables are self-supporting up to 23'. Maximum continuous cable run 330'.
- 24V festoon cables have a maximum of 300W
- 120V festoon cables have a maximum of 2160W

Firefly Lighting's inline surface mountable Festoon Cable is designed for permanent installations and is ideal for marquee outlines on awnings or bulb mounting behind signs. Each lamp holder is factory moulded to a heavy-duty rubber cable with a clever weatherproof flange that keeps the lamp bases free from moisture and salt air. Each lamp holder has mounting holes pre-drilled, so it's easy to install on-site.

**Round Festoon Cables** 

Available in black. Round cable with suspended or inline E26 sockets. Imperial socket spacing.

Type	Part Number	Spacing	Weight
Inline	FIRFESV2CAB6I	6"	0.14kg/ft
Inline	FIRFESV2CAB8I	8"	TBD
Inline	FIRFESV2CAB12I	12"	0.09kg/ft
Inline	FIRFESV2CAB18I	18"	0.07kg/ft+
Inline	FIRFESV2CAB24I	24"	TBD
Inline	FIRFESV2CAB36I	36"	TBD

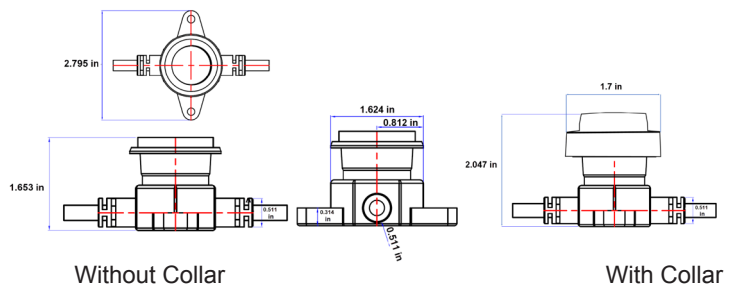
Flat self leveling cables available by special order, enquire for more information.

Type	Part Number	Spacing	Weight	Length cable from junction to socket	Length from junction to bottom of socket
Suspended	FIRFESV2CAB12ID	12"	0.15kg/ft	5.2"	6.9"
Suspended	FIRFESV2CAB18ID	18"	0.11kg/ft	5.2"	6.9"
Suspended	FIRFESV2CAB24ID	24"	TBD	4.5"	6.2"
Suspended	FIRFESV2CAB36ID	36"	TBD	TBD	TBD



Inline

Suspended



The collar can be removed and replaced in order to fit the socket through a facade or sign.

Los Angeles  
+1 818.899.8818

London  
+44 (0)20.8574.9700

New York  
+1 201.896.8600

**tmb**  
www.tmb.com

Toronto  
+1 519.538.0888

Beijing  
+86 10.8492.1587

Riga  
+371 6389 8886



Lighting Racer  
Hersheypark, Hershey, PA

Los Angeles  
+1 818.899.8818

London  
+44 (0)20.8574.9700

New York  
+1 201.896.8600

**tmb**  
www.tmb.com  
sales@tmb.com

Toronto  
+1 519.538.0888

Beijing  
+86 10.8492.1587

Riga  
+371 6389 8886

**Optional Accessories**  
*ProPower*<sup>®</sup> DIN Rail NEMA System



Unique, complete, fully Listed, ready-to-install, indoor or outdoor NEMA enclosure systems. All systems ship pre-assembled with ProPlex DIN Devices and/or Drives, complete with all necessary PSU(s), breakers and internal wiring.

- NEMA1 and NEMA3R versions available in various sizes
- Ready-to-go, complete, packaged systems, including all internal wiring
- Internal DIN rail(s) securely hold ProPlex DIN rail devices, PSU's and breakers
- Barrier to separate mains voltage and low voltage components included
- Multiple power supply options available
- Includes circuit breaker for local service and easy reset from fault
- Contractor friendly mains input wiring with pass through wago connections
- Seamless, poured-in-place gasket on 3R enclosures
- Padlock adapters and locking covers available on some models
- Custom colors, sizes and configurations also available by special order



Los Angeles  
 +1 818.899.8818

London  
 +44 (0)20.8574.9700

New York  
 +1 201.896.8600

**tmb**  
 www.tmb.com  
 sales@tmb.com

Toronto  
 +1 519.538.0888

Beijing  
 +86 10.8492.1587

Riga  
 +371 6389 8886

## CONTACT INFORMATION

### **LOS ANGELES HEADQUARTERS**

527 Park Avenue | San Fernando, CA 91340, USA

Tel: +1 818.899.8818 | Fax: +1 818.899.8813

[sales@tmb.com](mailto:sales@tmb.com)

### **TMB 24/7 TECH SUPPORT**

US/Canada: +1.818.794.1286

Toll Free: 1.877.862.3833 (1.877.TMB.DUDE)

UK: +44 (0)20.8574.9739

Toll Free: 0800.652.5418

[techsupport@tmb.com](mailto:techsupport@tmb.com)

LOS ANGELES +1 818.899.8818

LONDON +44 (0)20.8574.9700

NEW YORK +1 201.896.8600

BEIJING +86 10.8492.1587

CANADA +1 519.538.0888

RIGA +371 6389 8886



[www.tmbarchitectural.com](http://www.tmbarchitectural.com)

A full service company providing technical support, customer service, and follow-up. Providing products and services for the industrial, entertainment, architectural, installation, defense, broadcast, research, telecommunications, and signage industries. Servicing the global market from offices in Los Angeles, London, New York, Toronto, Riga and Beijing.