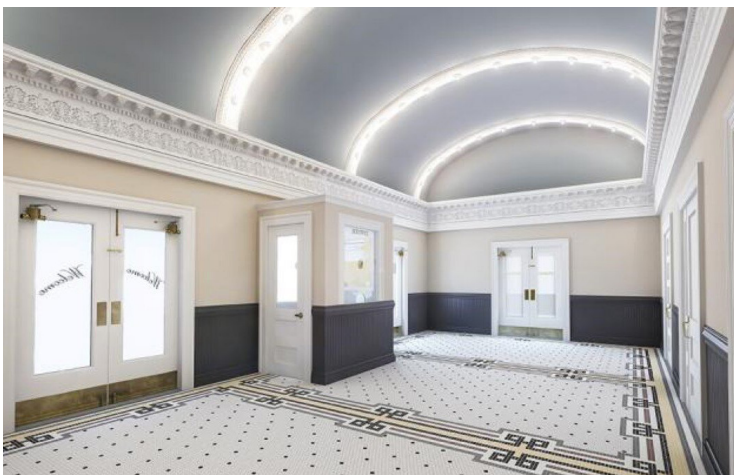


Intelligently controlled, low-wattage shatterproof outdoor-rated systems

- Redesigned! Improved! Brighter!
- RGBW, Dynamic White, and "Filament" versions
- Shatterproof! Indoor/outdoor!
- 2-wire system – Power and data share the same two wires
- Classic "Retro" look. Standard Edison base, retrofits in existing systems



Worldwide Exclusive Distribution



Los Angeles
+1 818.899.8818

London
+44 (0)20.8574.9700

New York
+1 201.896.8600

tmb
www.tmb.com

Toronto
+1 519.538.0888

Beijing
+86 10.8492.1587

Riga
+371 6389 8886

Lamp Specifications

Part Numbers	IMSMK2.6RGBWW	IMSMK2.5DW	IMSMK2.6V12	IMSMK2.6S14CF
LED Type	RGBW	Dynamic White	V12 "Filament"	S14 Curly Filament
LEDs	4 x Cree LEDs	4 x Cree LEDs	12 x LEDs	1 x LED
Lumen Output (LM)	Red - 15.19 lm Green - 31.89 lm Blue - 5.53 lm Warm White - 18.76 lm RGBW at Full - 66.24 lm	Cool: 64.49 lm Warm: 40.35 lm C/W at Full: 103.28 lm	53.3 lm	120 lm
	50,000 hours			
CCT	n/a	2200-6500K	2200K	2000K
Power Consumption	1.8W	1.8W	1.6W	1.5W
Screw Base	E26			
Power Input	24 VDC			
Data Input	DMX			
Dimensions	Lamp Only (dia, height) 45, 40 mm [1.78, 1.57 in.]		Lamp Only (dia, height) 45, 60 mm [1.75, 2.36 in.]	
	Lamp + Socket (width, height) 45, 67 mm [1.78, 2.64 in.]		Lamp + Socket (width, height) 45, 85 mm [1.75, 3.5 in.]	
Field Addressable	Optional remote Hand Held Programmer (HHP)			
DMX Channels ¹	4	2	1	1
Material	Frosted Polycarbonate, UV Resistant, Shatterproof. E26 metal screw base ²	Frosted Polycarbonate, UV Resistant, Shatterproof. E26 metal screw base ²	Transparent Polycarbonate, UV Resistant, Shatterproof. E26 metal screw base ²	Transparent Polycarbonate, UV Resistant, Shatterproof. E26 metal screw base ²
Lamp Shape	G-type lamp		S14-type lamp	
Exterior Color	White	White	Clear	Clear
Operating Temp	-20°C to +40°C [-4°F to +104°F]			

¹ RGBWW Lamps: 4 DMX channels per lamp. Maximum possible uniquely addressed lamps per DMX universe – 128
Dynamic White Lamps: 2 DMX channels per lamp. Maximum possible uniquely addressed lamps per DMX universe – 256
² "Filament" Lamps: 1 DMX channel per lamp. Maximum possible uniquely addressed lamps per DMX universe – 512
² For outdoor use application of a thin coat of silicone grease to bulb's metal screw base before inserting in socket is recommended.

Hand Held Programmer Specifications

Part Number	IMSMK2HHP
Power Input	5V micro USB
Battery	Internal lithium-ion rechargeable battery
Dimensions (HxWxD)	7.25 x 3.25 x 1.375 in. (184 x 83 x 35 mm)
Weight	0.8 lbs. (0.36 kg)
Connector	E27 threadless socket



- Upload latest firmware to lamps
- E27 threadless socket to quickly test, color check, and update individual lamps
- Test lamp systems w/various color & intensity presets
- DMX address lamps
- Connect to Universe Drive via onboard 5-pin connector.
- Output test patterns to fully-loaded lamp strings without a console!



Specifications

**ProPlex IMS
Universe Drive
Multiple Universe
Drive 2U**



**ProPlex IMS
Universe Drive
Simple Universe
Drive 2U**



**ProPlex IMS
Universe Drive
Portable Mount**



**ProPlex IMS
Universe Drive
IP65**



**ProPlex IMS
Universe Drive DIN,
In/1, Thru/1, Out/2**



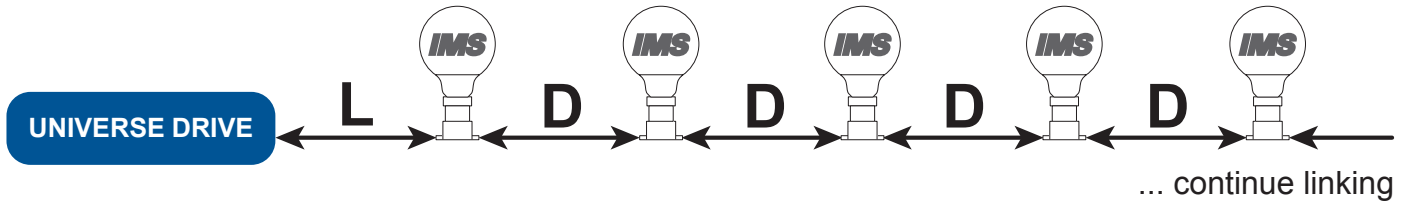
Part Number	PPMK2MUD	PPMK2SUD	PPMK2UD	PPMK2IPUD	PPMK2DINUD
Operating Voltages	90-260 VAC	90-260 VAC	90-260 VAC	90-260 VAC	24 VDC
Frequency Tolerance	50-60 Hz				
Power Consumption	1200 W	1200 W	300 W	300 W	External 250 W PSU required
Number of Outputs	8	8	2	2	2
Output Voltage	24 VDC				
Number of Universes	4	1	1	1	1
Power Input	Neutrik PowerCON NAC3MPA-1	Neutrik PowerCON NAC3MPA-1	Neutrik PowerCON NAC3MPA-1	Phoenix MSTB 2+2-terminal ³	Phoenix MSTB 2-terminal ³
Power Thru	None	None	Neutrik PowerCON NAC3MPB-1	None	None
DMX512 Input	Neutrik XLR-5	Neutrik XLR-5	Neutrik XLR-5	Phoenix MSTB 3-terminal ³	Phoenix MSTB 3-terminal ³
DMX512 Thru	Neutrik XLR-5	Neutrik XLR-5	Neutrik XLR-5	Phoenix MSTB 3-terminal ³	Phoenix MSTB 3-terminal ³
Ethernet Input	Neutrik EtherCON	None	None	None	None
Power/Data Outputs	8x Neutrik SpeakON NL2 2-pole	8x Neutrik SpeakON NL2 2-pole	2x Neutrik SpeakON NL2 2-pole	2x Phoenix MSTB 2-terminal ³	2x Phoenix MSTB 2-terminal ³
Max. Cable Length	246.06w ft. (75m) to last lamp, max. 64 lamps, using 14 AWG / 2.5 mm ² 2-conductor festoon cable ⁴				
Operating Temp	-30 to +40 °C [-22 to +104 °F]	-30 to +40 °C [-22 to +104 °F]	-30 to +50 C° [-22 to +122F°]	-30 to +50 C° [-22 to +122F°]	-30 to +50 C° [-22 to +122F°]
L80 Rating	50,000 hours	50,000 hours	50,000 hours	50,000 hours	50,000 hours
Dimensions (HxWxD)	90 x 483 x 305 mm [3.5 x 19 x 12 in.]	90 x 483 x 305 mm [3.5 x 19 x 12 in.]	With yoke: 120.6 x 203.2 x 271.5 mm [4.75 x 8 x 10.7 in.] w/o yoke: 87.4 x 196.8 x 271.5 mm [3.44 x 7.75 x 10.7 in.]	115 x 273 x 254 mm [4.53 x 10.75 x 10 in.]	39.5 x 104 x 92.3 mm [1.55 x 4.1 x 3.63 in.]
Shipping Dimensions (HxWxD)	203 x 533 x 406 mm [8 x 21 x 16 in.]	203 x 533 x 406 mm [8 x 21 x 16 in.]	186 x 261 x 343 mm [7.3 x 10.25 x 13.5 in.]	206.375 x 342.9 x 317.5mm [8.125 x 13.5 x 12.5 in.]	101.6 x 168.3 x 168.3 mm [4 x 6.625 x 6.625 in.]
Weight	6.8 kg [15 lb]	7.4 kg [16.3 lb]	3.9 kg [8.7 lb]	3.379 kg [7.45 lb]	174 g [0.38 lb]
Shipping Weight	7.7 kg [17 lb]	8.3 kg [18.3 lb]	4.3 kg [9.5 lb]	3.99 kg [8.8lb]	0.28 kg [0.65 lb]
Color	Blue	Blue	Blue	Silver	Blue / Silver

³ Included
⁴ See page 4 for Cable Length / Lamp Spacing Tables

BTU Values

ProPlex IMS Universe Drive Multiple Universe Drive 2U	313.8
IMS Bulb RGBW	4.8
IMS Bulb DynamicWhite	4.8

Cable Length / Lamp Spacing Tables*



<i>if D = 6in (15 cm)</i>			<i>if D = 12in (30 cm)</i>			<i>if D = 18in (50 cm)</i>		
<i>Cable setting</i>	<i>L</i>	<i>Max.</i> 	<i>Cable setting</i>	<i>L</i>	<i>Max.</i> 	<i>Cable setting</i>	<i>L</i>	<i>Max.</i>
Short	1 m	64	Short	1 m	51	Short	1 m	41
Medium	5 m	64	Medium	5 m	64	Medium	1 m	64
Long	20 m	64	Long	10 m	64	Long	10 m	64
Short with transcoding	5 m	64	Short with transcoding	5 m	64	Short with transcoding	1 m	62
Medium with transcoding	25 m	64	Medium with transcoding	20 m	64	Medium with transcoding	15 m	64
Long with transcoding	55 m	64	Long with transcoding	50 m	64	Long with transcoding	45 m	64

<i>if D = 36in (100 cm)</i>		
<i>Cable setting</i>	<i>L</i>	<i>Max.</i>
Short	1m	30
Medium	1 m	46
Long	1 m	64
Short with transcoding	1 m	45
Medium with transcoding	1 m	64
Long with transcoding	40 m	64

LEGEND	
	IMS Lamp
<i>Max.</i> 	Max. amount of working lamps
<i>L</i>	Length of cable between Universe Drive and first lamp
<i>D</i>	Distance between lamps (cm)

* The above settings are recommended using IMS122CL3 cable. Settings may vary depending on cable type, IMS control data transfer rate, and other conditions. The settings are examples of different scenarios and their tested results.



Lighting Racer
Hersheypark, Hershey, PA

Los Angeles
+1 818.899.8818

London
+44 (0)20.8574.9700

New York
+1 201.896.8600

tmb
www.tmb.com

Toronto
+1 519.538.0888

Beijing
+86 10.8492.1587

Riga
+371 6389 8886

Optional Accessories
ProPower® DIN Rail NEMA System



Unique, complete, fully Listed, ready-to-install, indoor or outdoor NEMA enclosure systems. All systems ship pre-assembled with ProPlex DIN Devices and/or Drives, complete with all necessary PSU(s), breakers and internal wiring.

- NEMA1 and NEMA3R versions available in various sizes
- Ready-to-go, complete, packaged systems, including all internal wiring
- Internal DIN rail(s) securely hold ProPlex DIN rail devices, a PSU's and breakers
- Barrier to separate mains voltage and low voltage components included
- Multiple power supply options available
- Includes circuit breaker for local service and easy reset from fault
- Contractor friendly mains input wiring with pass through wago connections
- Seamless, poured-in-place gasket on 3R enclosures
- Padlock adapters and locking covers available on some models
- Custom colors, sizes and configurations also available by special order



Los Angeles
 +1 818.899.8818

London
 +44 (0)20.8574.9700

New York
 +1 201.896.8600



Toronto
 +1 519.538.0888

Beijing
 +86 10.8492.1587

Riga
 +371 6389 8886

CONTACT INFORMATION

LOS ANGELES HEADQUARTERS

527 Park Avenue | San Fernando, CA 91340, USA

Tel: +1 818.899.8818 | Fax: +1 818.899.8813

sales@tmb.com

TMB 24/7 TECH SUPPORT

US/Canada: +1.818.794.1286

Toll Free: 1.877.862.3833 (1.877.TMB.DUDE)

UK: +44 (0)20.8574.9739

Toll Free: 0800.652.5418

techsupport@tmb.com

LOS ANGELES +1 818.899.8818

LONDON +44 (0)20.8574.9700

NEW YORK +1 201.896.8600

BEIJING +86 10.8492.1587

CANADA +1 519.538.0888

RIGA +371 6389 8886



www.tmbarchitectural.com

A full service company providing technical support, customer service, and follow-up.

Providing products and services for the industrial, entertainment, architectural, installation, defense, broadcast, research, telecommunications, and signage industries.

Servicing the global market from offices in Los Angeles, London, New York, Toronto, Riga and Beijing.