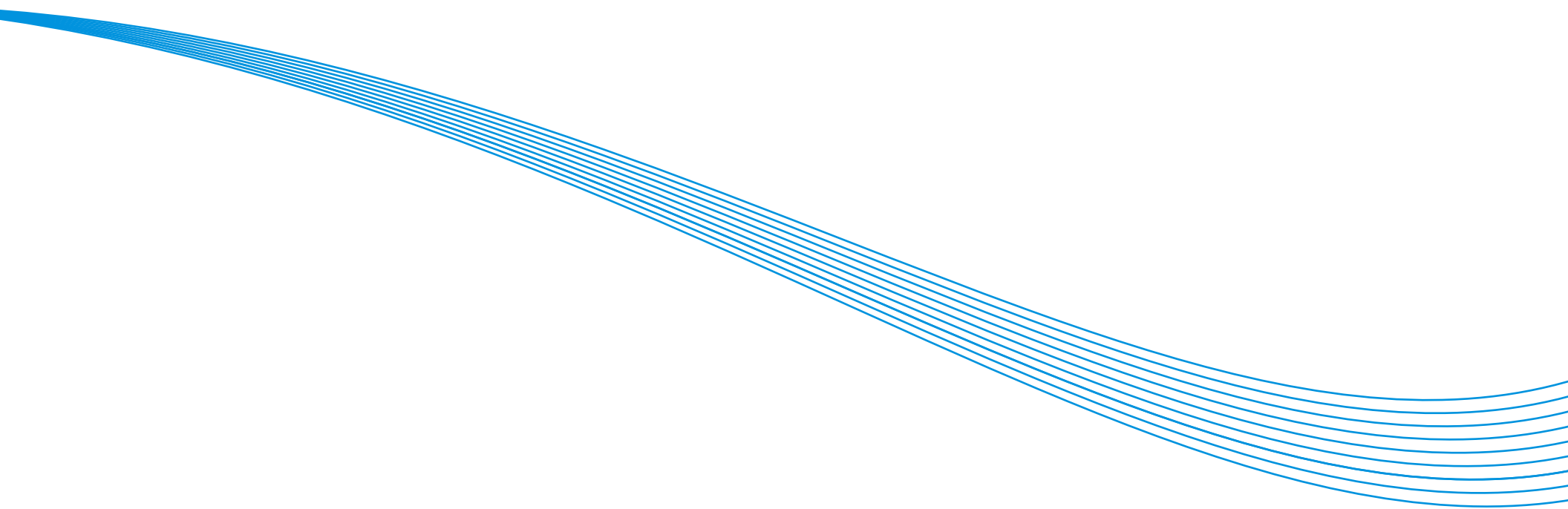




Stratedigm

Cytometry Without Compromise



11 REASONS CUSTOMERS CHOOSE STRATEDIGM

one

Customizable: Configurable & upgradeable up to 6 lasers, 30 parameters in a 21"x21" footprint

Future-proof: more than 11 years of future-proof, non-obsolete design.

two

three

Our service: 95% of issues are resolved remotely in < 20 minutes.

Reliability: 1/10th the parts. Fewer parts, lower cost, and higher reliability.

four

five

Rugged design: work out of the box after being shipped as passenger luggage.

Automation: 24/7 unattended automation all under a single software package.

six

seven

Our software: Incredibly powerful, user-friendly software from novice to poweruser.

Repeat customers: 85% of customers return for a major purchase.

eight

nine

Adoption: Stratedigm is adopted at some of the most prestigious labs in the world.

Our references: our systems are never placed in exchange for favorable reviews.

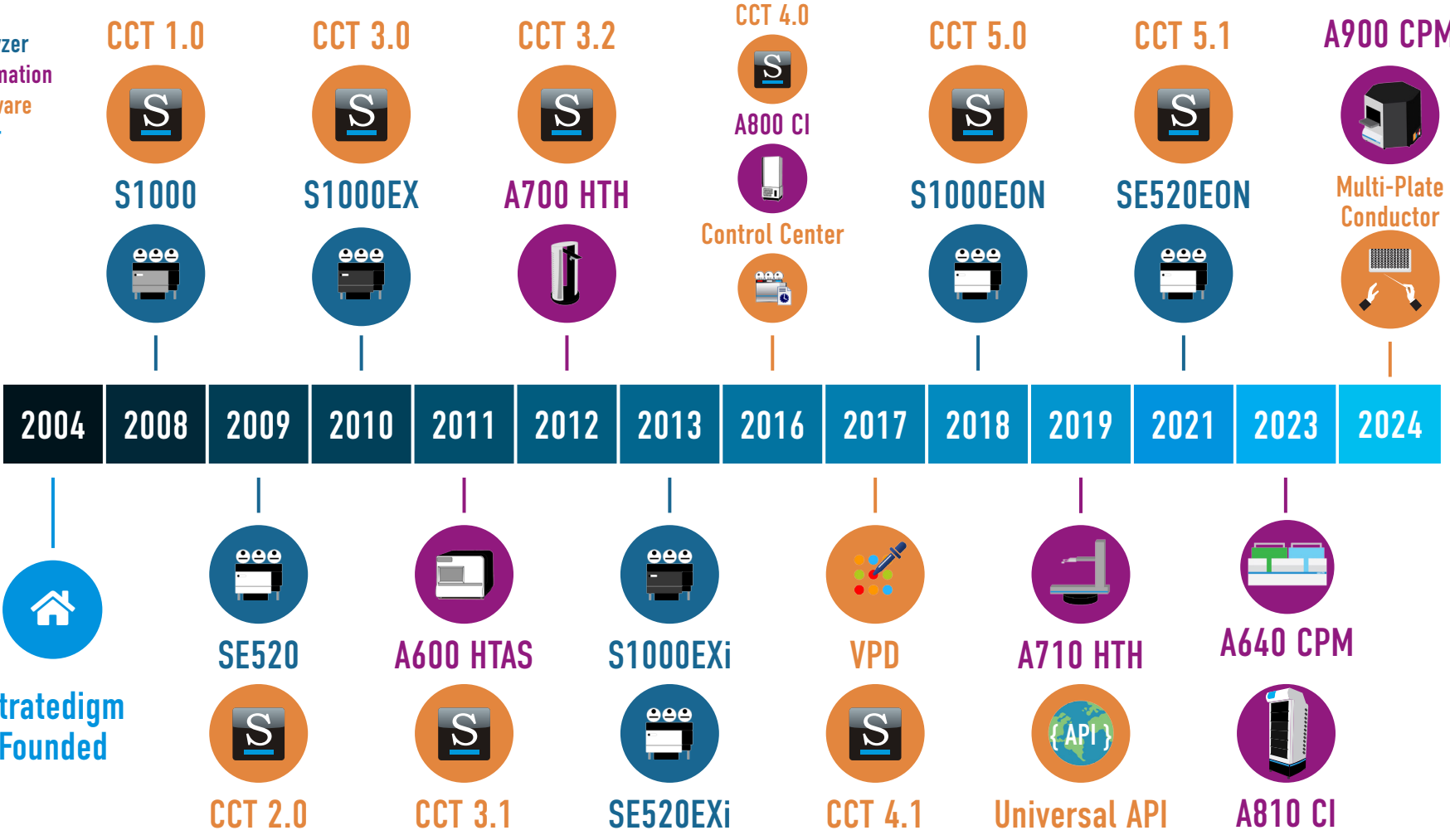
ten

eleven

Made in the USA: Our cytometers, plate loaders, and movers are designed, tested, and manufactured in Silicon Valley, CA, USA.

STRATEDIGM PRODUCT HISTORY

- Analyzer
- Automation
- Software
- Other





Stratedigm

In an era of disposable cytometers, Stratedigm is making obsolescence a thing of the past. Since its founding in 2004, Stratedigm has designed fully customizable, upgradeable, scalable benchtop flow cytometry instruments. For more than a decade, we've continued to pursue our passion for building the best possible instruments that grow with you and your applications.



Service & Warranty

We take great pride in our service. We utilize industrial IoT to resolve and solve 95% of issues in minutes. And only Stratedigm offers a standard two-year warranty with every S1000, A600 HTAS, and A710 HTH. The Flowraissance program boosts your warranty with a complimentary upgrade to our latest cytometer hardware and software.



Sensitivity & Resolution

The S1000EON flow cytometer has a TRUE 5-decade dynamic range. In tandem with our patent pending laser-trimming technology and a dedicated microparticle mode, you can detect particles from 0.2 μm to 7 μm all in the same sample.

1+1

Ease of Use

We believe that a user-friendly software is essential to any great flow instrument. With CellCapTure, our full analysis and acquisition software, we made it possible to run a single tube or run hundreds of 384-well plates with just a few clicks.



Configurable & Scalable

Every lab has different needs and budgets. Our cytometers are completely customizable at time of purchase and field-upgradeable. Configure your system with up to 6 lasers and 30 parameters running single tubes or add automation and run hundreds of plates with ease.



Future-Proof

We've engineered a field-upgradeable and backwards compatible series of flow cytometers. The unique patented architecture of Stratedigm's products allows for flexible, incremental upgrades to your Stratedigm S1000 series flow cytometer—now or in the future. With our Anti-Obsolescence Guarantee, we've got you covered.



Made in the U.S.A

We develop and manufacture Stratedigm's cytometers, A600 plate loader, A640 cell prep module, A710 hotel, A810 incubator, and A900 in the heart of Silicon Valley. Being based in this innovative hub allows us to tap into top-tier technology and talent, and ensure high-quality products while supporting local jobs and the American manufacturing community.

SELECTION WITHOUT COMPROMISE



youtube.com/stratedigminc

Performance Without Compromise

10 parameters, 2 lasers

Based on the same proven technology as the S1000 series, the SE520EON offers a fixed configuration system with 2 lasers and 10 parameters at an unbeatable value.



SE520EON

Performance Without Compromise

Up to 30 parameters, 6 lasers

Stratedigm's S1000EON (pronounced "S-1000-eon") cutting-edge 4th generation flow cytometer is built to provide you with the ultimate in scalability and performance. The breakthrough result is an exceptional analyzer with patented optics, fluidics, and electronics configurable with up to 6 lasers and 30 parameters. Its industry-leading sensitivity enables the S1000EON to resolve dim events, making it the perfect choice for microparticle analysis and other demanding applications.



S1000EON

Automation Without Compromise

24/7 unattended automation

Stratedigm's automation suite ensures seamless compatibility and effortless workflow from experiment design to acquisition and analysis. Whether you run a few tubes or hundreds of plates, Stratedigm's A600 High Throughput Auto Sampler, A640 Cell Prep Module, A710 High Throughput Hotel, A800/A810 Cell Incubators, and the A900 Intelligent Plate Centrifuge will make your job as effortless as possible while putting automated cytometry at your fingertips.



A600 HTAS & A640 CPM



A710 HTH



A800 CI



A810 CI



A900 IPC



INNOVATION WITHOUT COMPROMISE

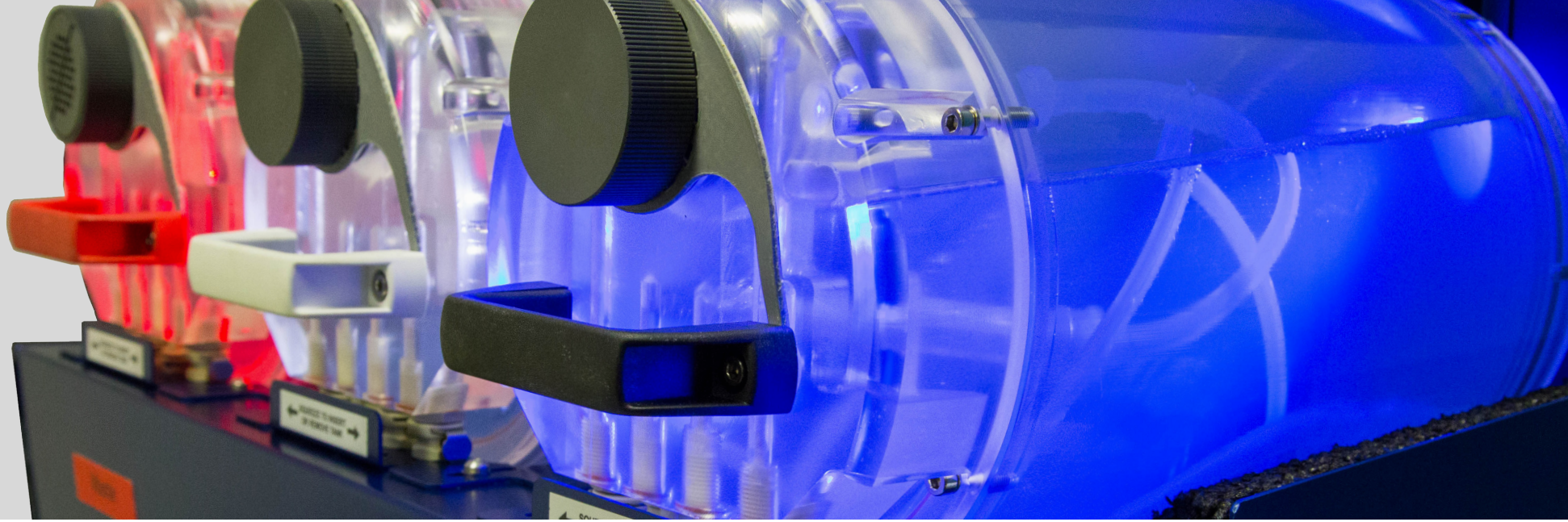
Revolutionary Optics

Stratedigm's cytometers employ the most advanced optical design on the market. Wavelength-specific focusing optics deliver laser light to the core stream with unparalleled efficiency. Our patented OptiSymmetric™ excitation architecture yields the most compact, rigid, and configurable 6-laser optical bench available. By simultaneously using the front and back sides of a vertically oriented optical plate, up to 6 lasers can be mounted for an optimal configuration and long-term stability.

Stratedigm's instruments are designed based on two fundamental goals: to create the most reliable flow cytometry systems and to ensure the best quality and most reproducible data on the market. Our relentless pursuit has resulted in a design with one-tenth the part count of a conventional analyzer, yielding our "order of magnitude advantage" in reliability.

Our emission module (pictured to the right) houses patented 3rd generation Smart Detect™ technology. The Smart Detect™ architecture provides unsurpassed performance at a fraction of the size, cost, and complexity of conventional designs. It enables the detection of up to four fluorochromes by the same detector, while allowing for independent gain adjustment for each color.





Revolutionary Fluidics

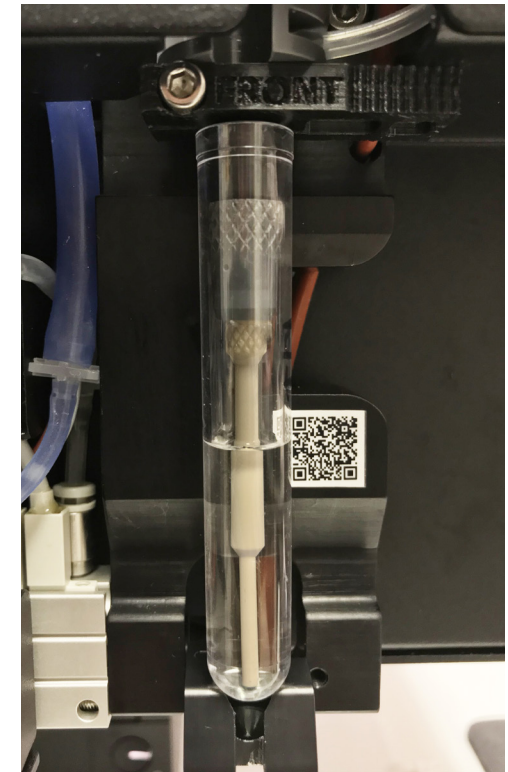
Stratedigm's patented Iso-Pressure fluidics allows for sample flow rate control while using one pressure system for both sheath and sample lines. Parting with 40 years of conventional fluidics design, Stratedigm's Iso-Pressure fluidics revolutionizes one of the most critical sub-systems in flow cytometers by reducing part count, cost, and complexity.

Fluidics Tanks

Stratedigm's fluid tanks are a perfect example of how we challenge convention to enhance the user experience. Housed on top of the instrument, fluid tanks can be viewed easily and replaced without having to disconnect tubes or sensor cables. And with transparent tanks, you can easily monitor the fluid levels of your tanks.

Dynamic Seal

Stratedigm's patented Dynamic Seal design simplifies test tube insertion and removal while improving ergonomics and allowing for a wider range of sample tube options. This unique architecture eliminates friction between the test tube and its seal. And, samples can be left on the cytometer without being diluted or consumed when the system is not acquiring data.





Revolutionary Electronics

The S1000EON electronics were designed to be truly scalable, capable of easily increasing the number of colors without imparting a cost penalty on more basic configurations. The result was a breakthrough approach to signal processing with unmatched sensitivity and ultra-low thresholding capabilities critical for dim signal and microparticle analysis. Each circuit board with Stratedigm's hybrid digital design is about the size of a notepad and can process more than 26 parameters while drawing less than 30 watts of power.

Stratedigm's newest generation of electronics brings revolutionary changes:

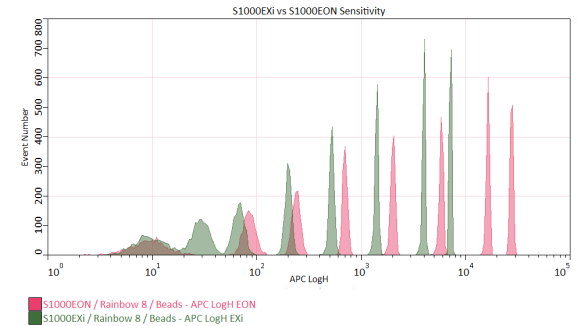
- True 5-decade dynamic range
- Ghost Detect™: measure background fluorescence of your buffer fluid
- 3rd generation Smart Detect™ technology: allows for four colors to be processed simultaneously with a single photomultiplier tube (PMT)
- Unmatched low-end sensitivity

S1000EXI VERSUS S1000EON

A New Eon of Flow Cytometry

How do you make the best better? We took our proven technology from our S1000EXi and made major improvements that are incredible leaps forward for flow cytometry. Third generation Smart Detect™, second generation Laser Trimming™, and fourth generation signal processing electronics are only some of the new groundbreaking changes we put in the S1000EON. And, we achieved all of these new changes in the same footprint—at same price point. That's truly Cytometry Without Compromise™.

	EXI	EON
Max # of Lasers	4	6
Max # of Parameters	22	30
Decades - Acquisition	4	5
Decades - Analysis	6	7
Interrogation Points	3	4
FSC Channels	1	4
SSC Channels	2	2
Event Rate	Up to 10,000/sec	Up to 20,000/sec



Before joining [Biological Industries Israel], I served as the Sr. Core Lab Director for Weizmann Institute for more than 30 years...I've been methodically monitoring [the S1000EON's] performance on a daily basis for over 3 months. I'm measuring the sensitivity everyday with Rainbow 8 Peak beads, like they do on every instrument [in the Weizmann Flow Cytometry Core Lab]. And this instrument is one of the best, if not the best, instruments I've operated in my career.

*Eitan Ariel
Weizmann Institute of Science*



S1000EXI

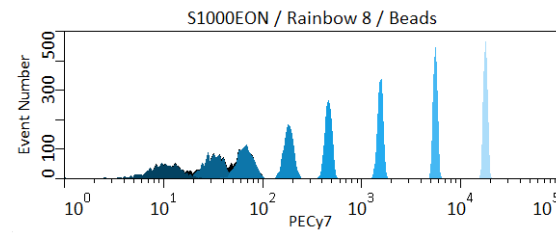
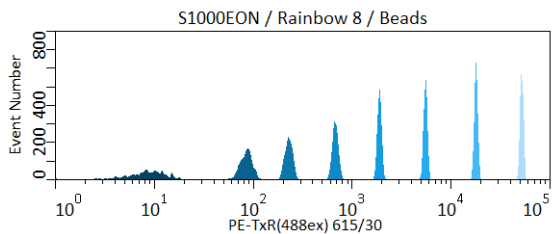
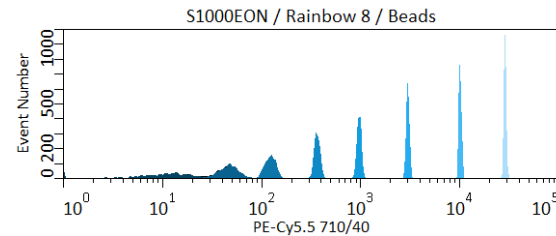
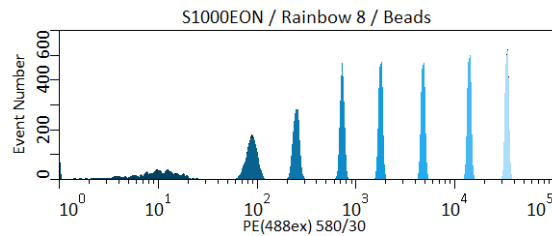
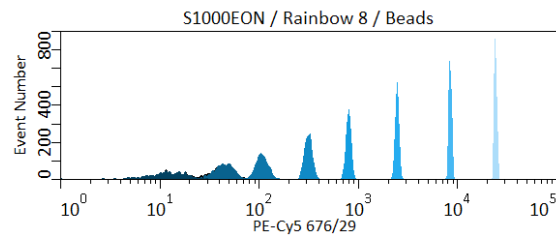
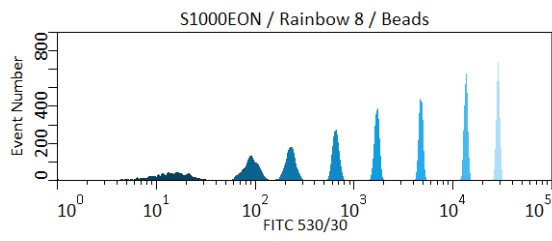


S1000EON

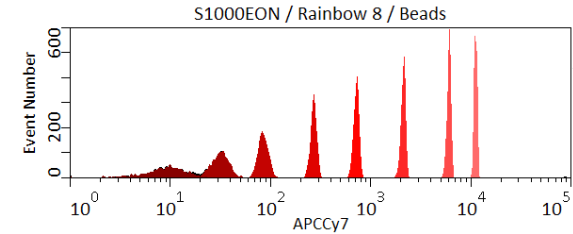
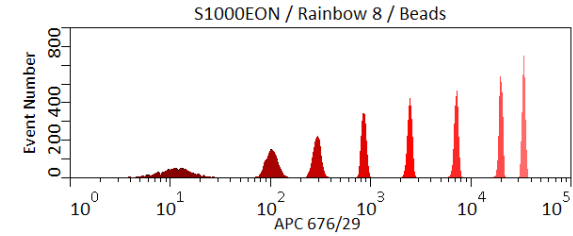
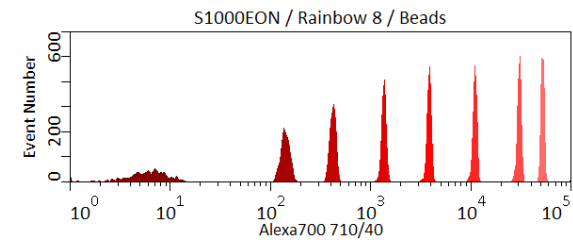
PERFORMANCE WITHOUT COMPROMISE

Our cytometers provide unmatched results in a benchtop package. With a true 5-decade dynamic range powered by our electronics, you can place stained and unstained populations anywhere on scale without the need for costly beads and cumbersome software algorithms to optimize PMT voltages.

488 nm Laser



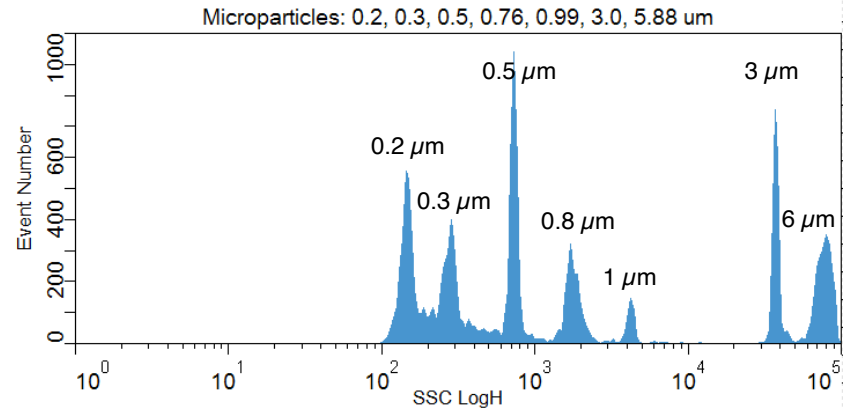
640 nm Laser



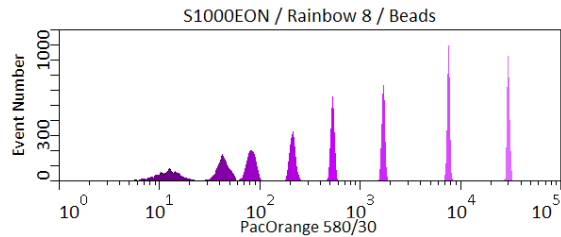
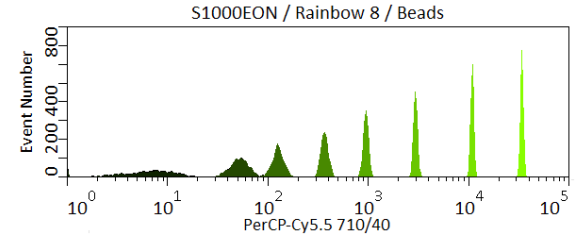
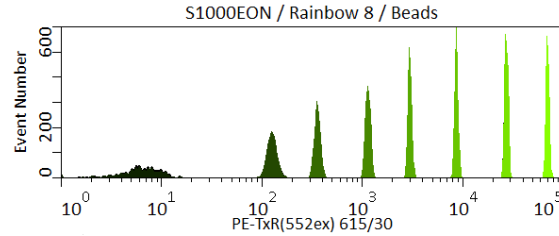
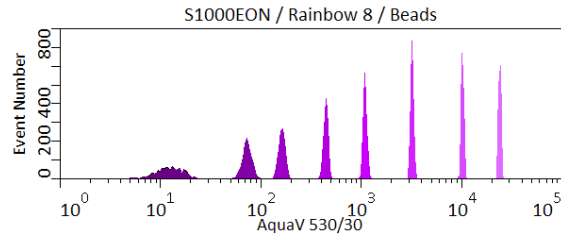
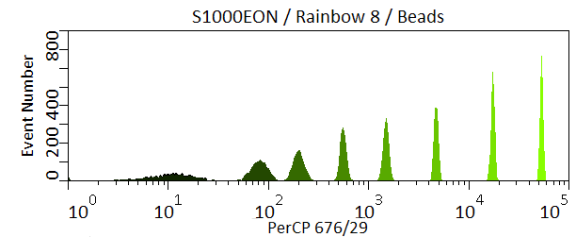
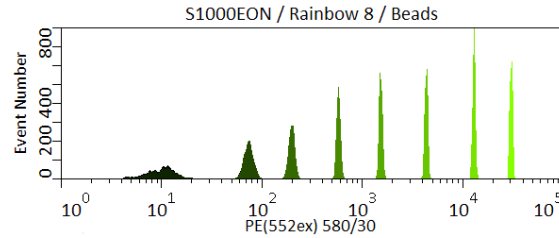
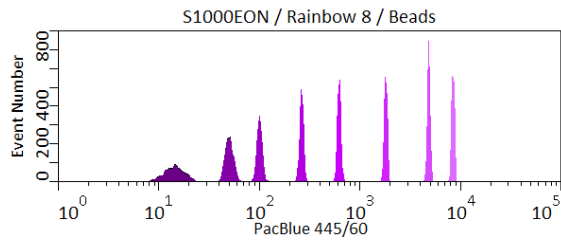
*Data collected on Stratadigm S1000EON S/N - S1400EONBRVG07072013-50 with upgraded Pyro-Red detector.

Dedicated Microparticle Mode

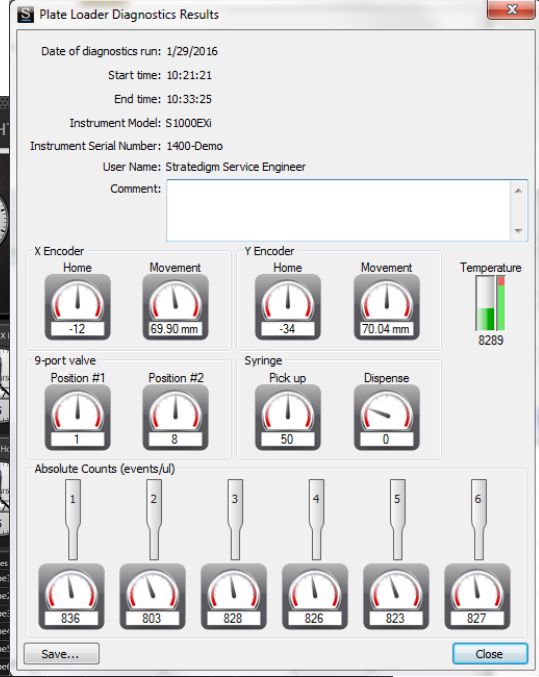
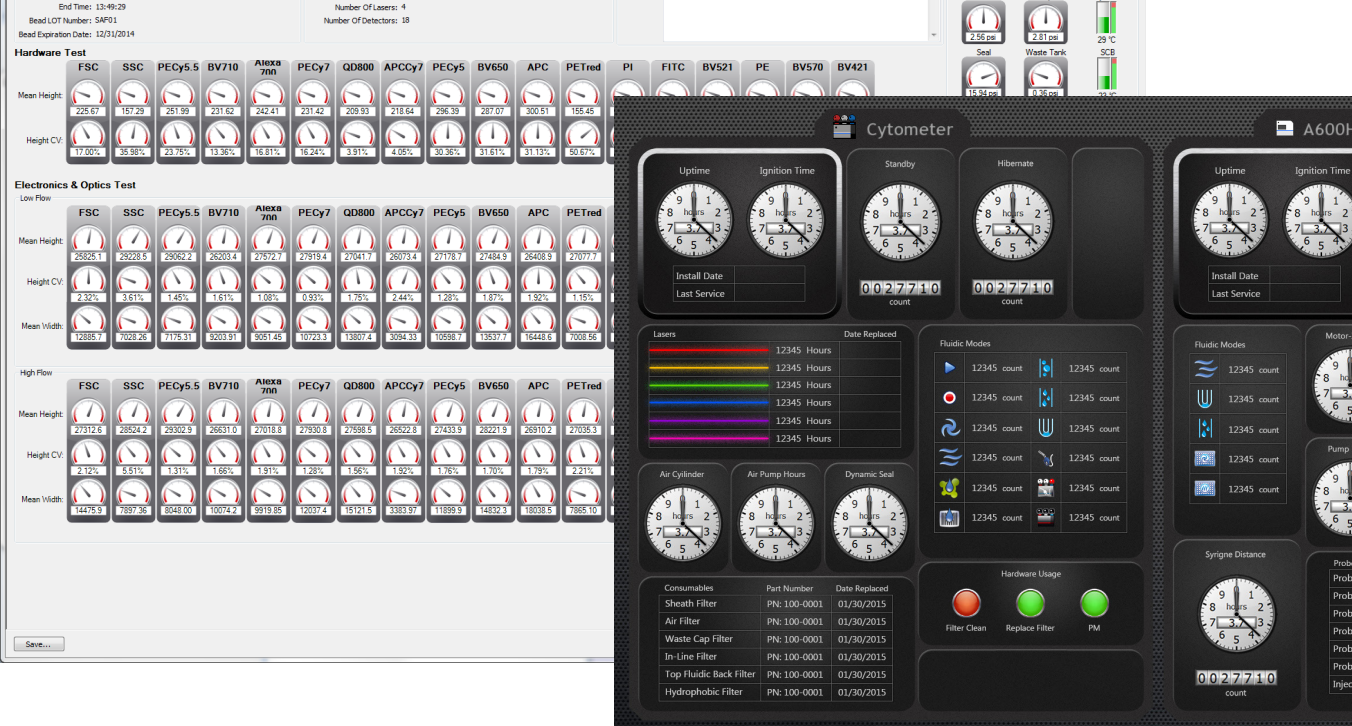
A dedicated microparticle mode powered by Stratadigm's patented Laser Trimming™ technology enables accurate counting and analysis of a wide range of particle sizes with 3 decades of dynamic range on our scatter channel used for triggering. When in normal mode, users can measure a maximum cells size up to 130 μm .



405 nm Laser



552 nm Laser



RELIABLE. RUGGED. TRUSTED.

Reliable

Laboratories worldwide rely on Stratedigm flow cytometry equipment to provide the high-quality results they need, day after day. Reliable by design, Stratedigm’s flow cytometers protect your investment from the inside out. Critical components used in every Stratedigm cytometer are housed and protected by an expanded polypropylene (EPP) shell, resulting in excellent optical alignment, shock resistance, and vibrational stability.

Rugged

Knowing that each component of your system is properly maintained and regularly inspected is important. CellCapTure’s new Control Center allows you to verify each component’s usage at a glance and allows Stratedigm’s engineers to proactively replace near end-of-life components—avoiding downtime.

Trusted

Rest assured that the integrity of your data comes first. Stratedigm’s automated, built-in diagnostics provide a comprehensive system check to ensure your instruments are operating in peak condition.



“We’ve had our Stratedigm S1000EX since 2017 here at the National University of Singapore (NUS). Since then, we’ve experienced excellent customer care from Stratedigm...Our instrument has been very productive, super reliable, and provides us with excellent data.”

*Daniel Tan Wan Shun
National University of Singapore*



“This is the 2nd Stratedigm unit that I have used. We purchased the current S1300EXi together with the A600 HTAS and A700 Hotel [in 2016], so far the system has gone through more than 300 experiments, consumed over 500 liters of sheath fluid, the total runtime has passed over 4300 hours, and the unit is still STRONG. It’s hard to believe that all this can be achieved by using any other brand of flow cytometer.”

Hui Shao, Adicet Bio



“The S1000EON is in high demand as part of our flow core facility, and has been reliable and performed consistently with class-leading sensitivity and resolution. Although we are based overseas, getting prompt and efficient engineering support has never been an issue, and a 99.94% uptime with over 87k acquisitions since its installation in 2015 speaks tremendously to Stratedigm’s fast response time and reliable cytometers.”

*Cameron Nowell
Imaging, FACS and Analysis Core
Monash Institute of Pharmaceutical Sciences
Monash University, Melbourne, Australia*

FLEXIBILITY WITHOUT COMPROMISE

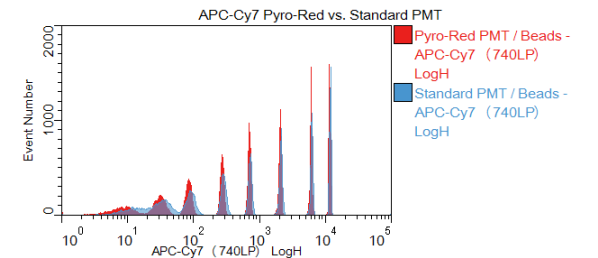
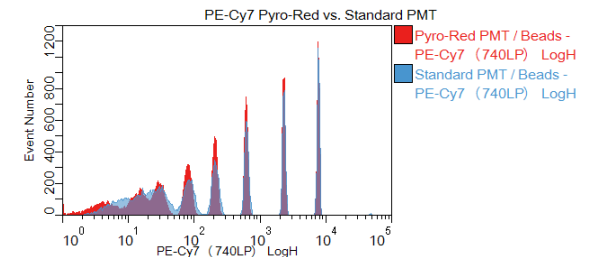
The S1000EON gives you ultimate configuration flexibility, allowing you to choose up to 6 lasers from 8 available wavelengths and 30 parameters. Matching your budget at the time of purchase and expanding for future upgrades just got simpler!

372 nm - Near-UV (75 mW)	405 nm - Violet (100 mW)	488 nm - Blue (150 mW)	532 nm - Green (100 mW)
BUV395 (405/20) DAPI (440/40) BUV496 (530/30) BUV563 (580/30) BUV661 (676/29) BUV737 (725/40) BUV805 (780/60)	BV421 (440/40) DAPI (440/40) BV480 (530/30) BV510 (530/30) BV570 (580/30) BV605 (615/30) BV650 (676/29) BV711 (725/40) BV750 (780/60) BV786 (780/60)	FITC (530/30) PE (580/30) PE-CF594 (615/30) PI (615/30) mCherry (615/30) RFP (615/30) PE-Cy5 (676/29) PE-Cy5.5 (725/40) PE-Cy7 (780/60)	PE (580/30) PE-CF594 (615/30) PI (615/30) mCherry (615/30) RFP (615/30) PE-Cy5 (676/29) PE-Cy5.5 (725/40) PE-Cy7 (780/60)
552 nm - Olive (100 mW)	561 nm - Yellow (100 mW)	640 nm - Red (100 mW)	805 nm - IR (100 mW)
PE (580/30) PE-CF594 (615/30) PI (615/30) mCherry (615/30) PE-Cy5 (676/29) PE-Cy5.5 (725/40) PE-Cy7 (780/60)	PE (580/30) PE-CF594 (615/30) PI (615/30) mCherry (615/30) PE-Cy5 (676/29) PE-Cy5.5 (725/40) PE-Cy7 (780/60)	APC (676/29) Alexa700 (725/40) APC-R700 (780/60) APC-H7 (780/60)	Alexa790 (810LP) BUV805 (810LP)

Scatter and PMT Upgrades

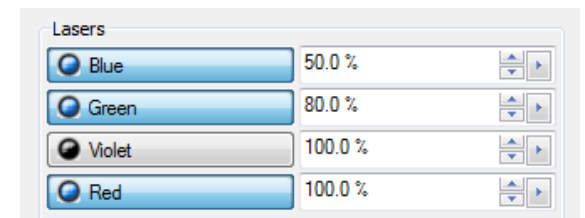
Detect scatter and fluorescence the way that works best for you. Stratedigm provides several upgrades to make your system even more flexible:

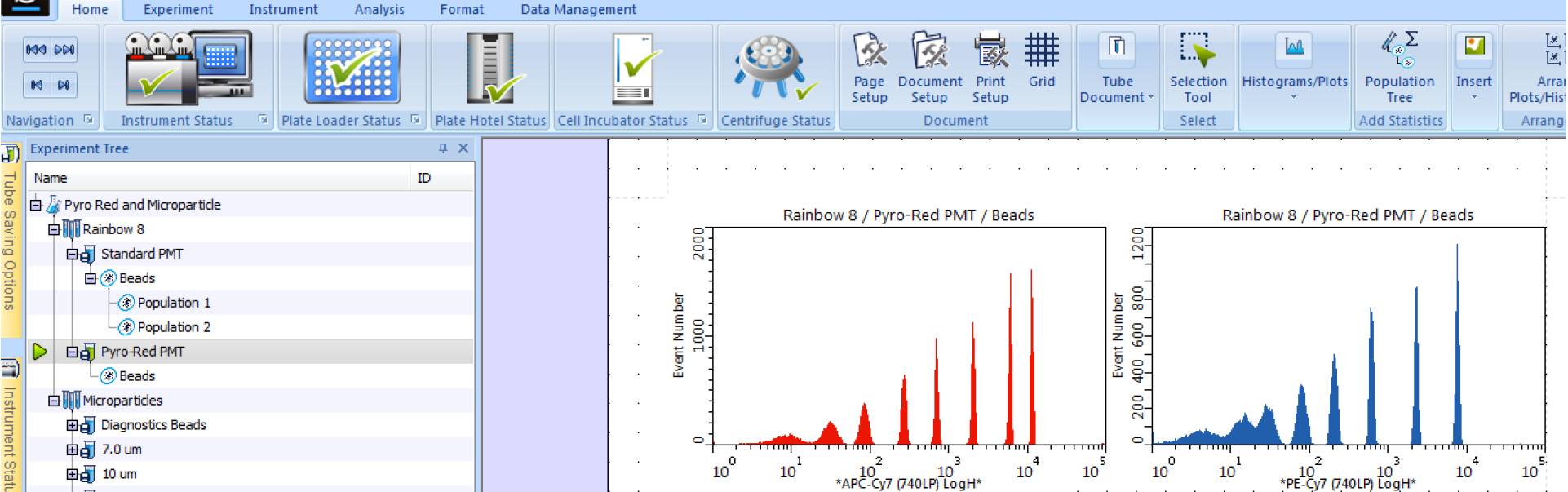
- Configure your system to collect side scatter from the 488 and/or the 405 nm lasers.
- Upgrade the FSC photodiode (PD) to a FSC PMT to increase your FSC sensitivity
- Quad-FSC (FSC measured from up to 4 lasers): 375, 405, 488, and/or 640 nm
- Upgrade your far-red sensitivity with Stratedigm's Pyro-Red™ detector (sample data below)



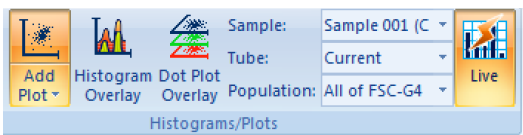
Laser Power

Take full control of your lasers and adjust laser power from 100% down to as low as 30%—without 3rd party software. From experiment to experiment or from tube to tube, turn lasers on and off to customize your results.





SOFTWARE WITHOUT COMPROMISE



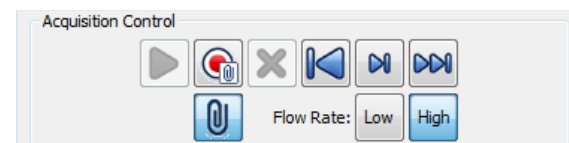
Simple, Intuitive Interface

A simple, intuitive, and familiar user interface allows beginners and experts alike to quickly design complex experiments.



Full Analysis Capabilities

Full analysis capabilities include post-color compensation, batch analysis, calculation sheet, custom parameters, overlays, import/export of FCS data, and more.



Append Mode

Append mode allows users to append data to already recorded tubes and wells. Each run is timestamped and gated for easy identification between runs.



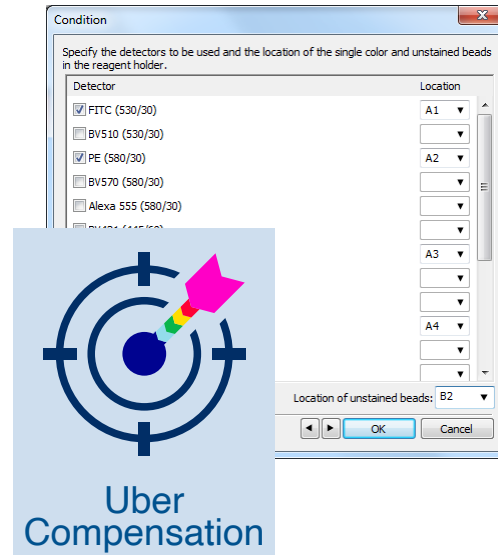
Ghost Detect

Stratedigm's Ghost Detect™ mode enables the measurement of the background fluorescence of a sample without the need for an optical trigger.

Ease of Use

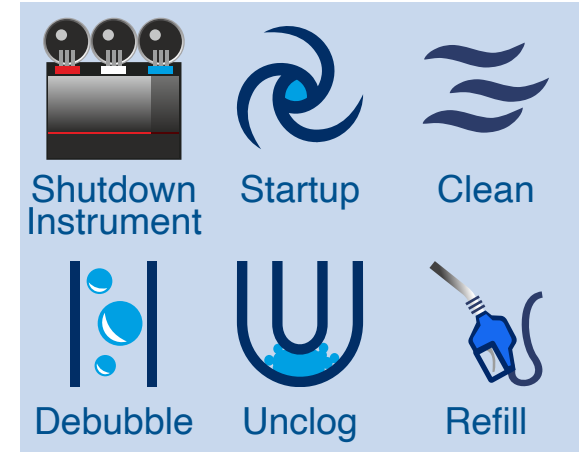
From running conventional flow cytometry analysis to complex high throughput experiments, Stratedigm's CellCapTure™ software gives you unmatched experiment flexibility and ease of use.

- Familiar interface: powerful, yet approachable graphical user interface (GUI) makes for easy training.
- Adaptive icons: predictive and intuitive home ribbon provides you with the tools you need when you need them.
- Save time and money by doing offline experiment design from a separate laptop or PC.
- Import, export, or auto-export FCS files.



Auto-Compensation

To utilize CellCapTure's Uber Compensation™, simply select the parameters to be compensated—CellCapTure will do the rest: tubes, plots, PMT gains, positive/negative gate creation, and compensation overlap percentages are all optimized and generated automatically.



Built-In Maintenance Modes

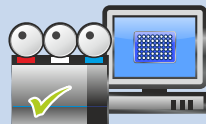
Built-in automated maintenance and fluidics modes simplify instrument care. The unattended, automated shutdown procedure:

- Cleans the instrument
- Saves the experiment
- Backs up the database
- Refills the sheath tank
- Exports data as FCS
- Sends a completion email
- Exits the software
- Shuts down the computer



[Stratedigm's acquisition and analysis software] CellCapture has a very intuitive user-interface that allows me to quickly train new students and users on the system, while offering rich and powerful data analysis capabilities. Our users are big fans of the Stratedigm and the easy-to-use software."

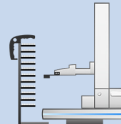
*Dr. Orit Sagi-Assif
Tel Aviv University*



Instrument Status
Ready with Plate Loader



Plate Loader Status
Ready



Hotel Status
Ready



Cell Incubator Status
Ready

AUTOMATION WITHOUT COMPROMISE

Stratedigm's automation suite is built with you in mind. By controlling all the steps in high throughput flow cytometry, you can quickly and easily run complex, multi-plate experiments. The automation suite's design is based on the same principles as our flow cytometers—innovative, compact, and flexible.

The A600 High Throughput Auto Sampler (HTAS) does away with hardware limitations inherent to existing plate loaders, offering lightning fast acquisition speeds through our Flat-6 injection™ technology. It provides liquid handling functions for automated titration and reagent addition, absolute volumetric counting, extended sample aspiration volumes, and the widest range of carrier compatibility.

The A640 Cell Prep Module (CPM) compliments the A600 HTAS with its four high-capacity reservoirs enabling the creation of experiments that need bulk fluids and reagents.

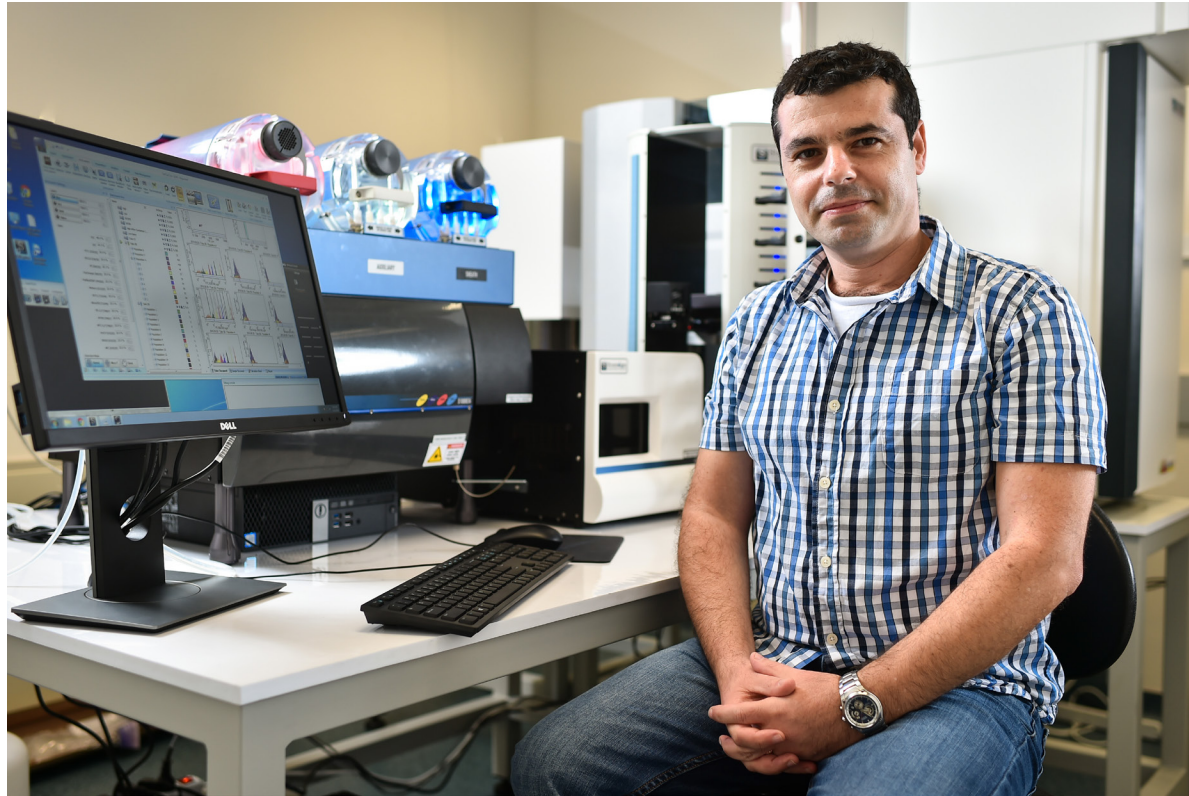
The A710 High Throughput Hotel (HTH) enables high traffic labs to run unsupervised multi-plate experiments overnight to truly maximize throughput. Capable of accommodating up to 320 plates, the A710 HTH can run samples back-to-back for several days without the need for supervision. Set your experiment up on Friday at 5 P.M. and have over 30,000 wells recorded and analyzed by Monday morning.

The A800 Cell Incubator (CI) gives users complete control of the incubation environment (temperature, humidity, CO₂, shaking) of up to 44 plates. Users can even arrange several A800 CI's to create multiple working environments for various samples.

The A810 Cell Incubator (CI) delivers efficient incubation in a compact design with a temperature range of 8-40°C. Multiple units can fit on a single benchtop, maximizing space and scalability. It supports various plate types and integrates easily with Stratedigm's automation suite for precise, hands-off control.

The A900 Intelligent Plate Centrifuge eliminates the limitations of traditional centrifuges with its advanced self-balancing technology, effortlessly handling significant imbalances for precise, reliable results.

Stratedigm's A600 HTAS, A640 CPM, A710 HTH, A800 CI, A810 CI, and A900 IPC allow for complete sample prep and automation. Complex flow cytometry automation has never been this simple.



Expanding Infrastructure

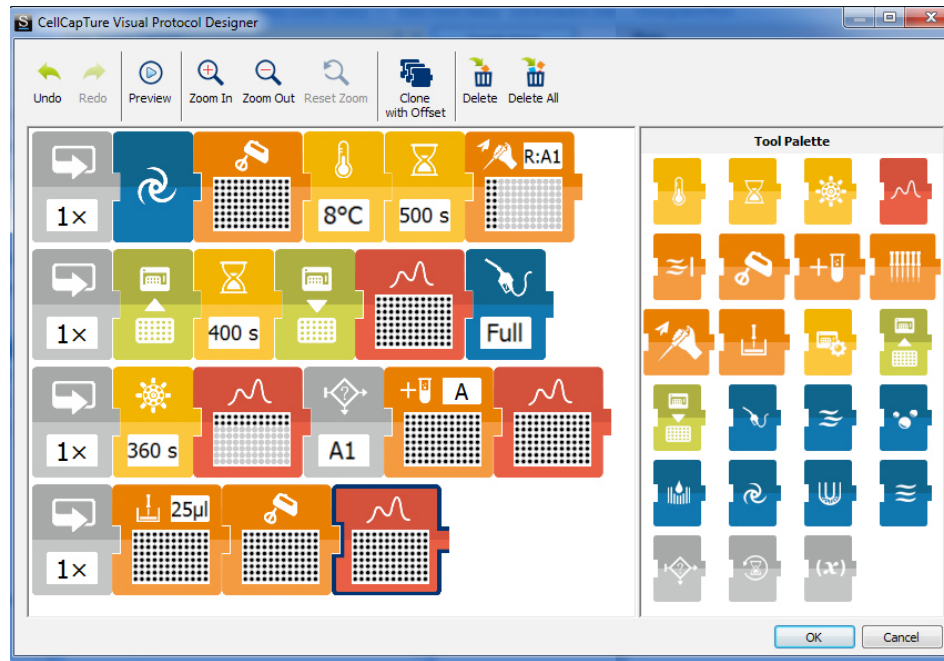
CellCapTure allows for full automation expansion. Non-Stratedigm cell incubators, liquid handlers, plate movers, and other automation accessories can be integrated to work together effortlessly and seamlessly using Stratedigm's built-in universal API.

Does your lab already have existing automation? Stratedigm and its team will work with you to integrate third party automation to fully integrate into CellCapTure. Even when using third party automation, you can still use Stratedigm products completely independently, leaving your system flexible!



After using the Stratedigm at Harvard Medical School for over 3 years, we decided to work with Stratedigm again at Technion. We were excited about harnessing Stratedigm's universal API to communicate with Tecan liquid handler 'EVOware' software. After thorough coordination, Stratedigm did a great job integrating all 3rd party software with its CellCapTure software allowing for a fully integrated automation suite.

*Dr. Yonatan (Yoni) Savir
Department of Physiology, Biophysics, and
Systems Biology
Technion - Israel Institute of Technology*



EFFORTLESS PROTOCOLS WITHOUT COMPROMISE

Visual Protocol Designer (VPD)

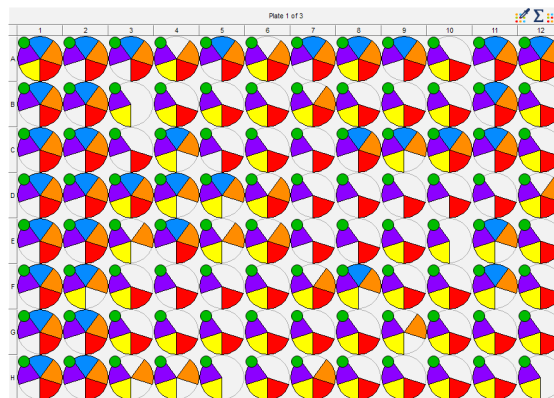
Stratedigm is reinventing the way you design your automation experiments. With CellCapTure's patented Visual Protocol Designer (VPD), users can easily create complex tasks and protocols to fully automate their experiments to their exact specifications by utilizing a visual, drag-and-drop environment.

By utilizing "action blocks" for mixing, waiting, incubating, refilling, recording, adding reagents, and pipetting from well-to-well in conjunction with references and conditional logic blocks, users can now create complex protocols with ease. Create multiple loops or a single protocol to take all the guess work out of flow cytometry workflows. With Stratedigm's VPD, users are just a few clicks away from creating their perfect experiment.

U.S. Patent No. 10338897B2

Heat Map

Easily create heat maps with up to 5 simultaneous statistics to quickly visualize and analyze plate statistics at a glance.



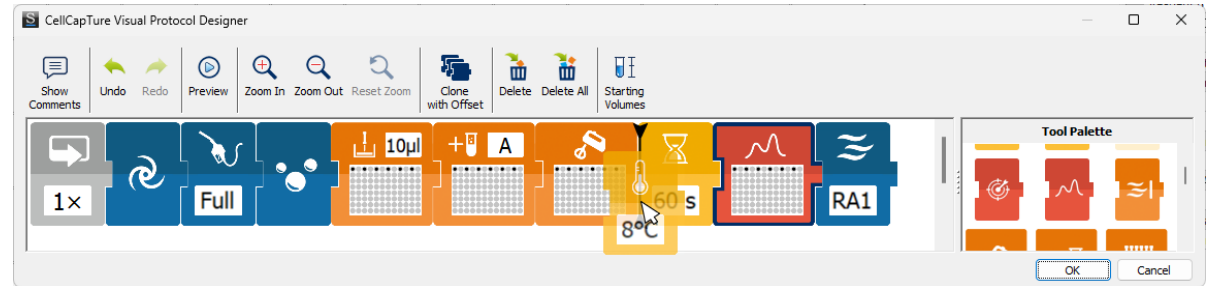
Multi-Experiment Record

Load your A710 with multiple plates from different experiments and queue them into the Multi-Experiment Record (MER). The MER allows users to either append or run completely independent experiments without user intervention.



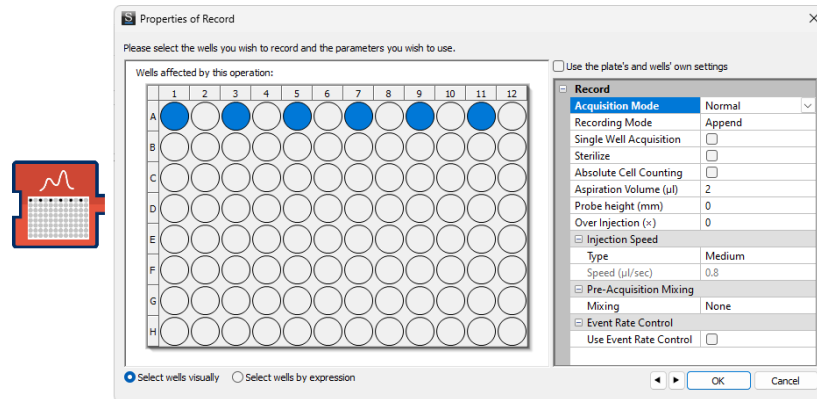
Easy Experiment Design

Creating the perfect, fully automated experiment is just a few clicks away. Easy template usage makes repeating and running routine applications painless and straightforward. Modify protocols effortlessly by dragging and dropping “action blocks” from the Tool Palette. These blocks can be inserted in any row and between existing blocks, offering the flexibility to adjust the experiment on the fly.



Efficient Properties

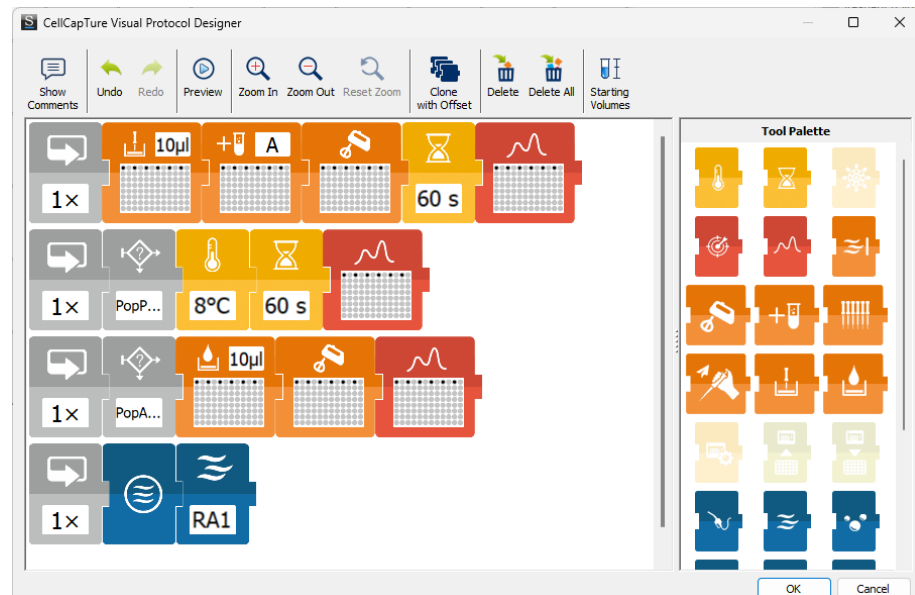
Each block features easily adjustable properties, making experiment setup straightforward. This flexibility allows experiments to dynamically adapt to meet both user and experimental requirements.

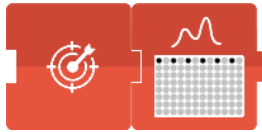


Adaptive Automation

Visual Protocol Designer includes powerful conditional tools with the Condition block, enabling users to incorporate conditional logic into their automation protocols. This allows users to set specific criteria and define actions based on whether these criteria are met, enhancing precision and flexibility in experiment design.

With Condition blocks, users can easily check for specific occurrences, such as a particular cell count, fluorescence intensity, or other experimental parameters. If the criteria are met, the protocol can automatically trigger a predefined response, such as initiating new tasks, adjusting parameters, or sending notifications. If not, the protocol can proceed with alternative steps or recheck the criteria after a specified period.

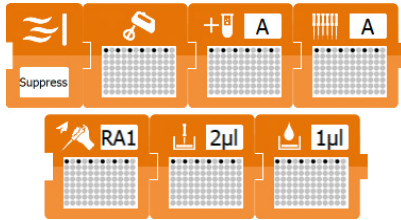




Acquisition Blocks

Uber Comp - Automatically run compensation that optimizes detector settings for the protocol without user intervention.

Record - Record the selected wells and tailor various settings, including injection speed and probe sample height, to meet your exact experimental needs.



Liquid Handling Blocks

Probe Wash Options - Configure the settings for when and how probes are washed during the protocol.

Mixing - Using the A600 HTAS, mix the selected wells with options such as volume, speed, and mix count.

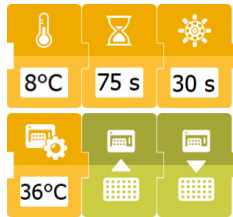
Add Reagent - Add reagent to the selected wells from a source such as the reagent rack or the A640 CPM.

Well to Well Pipette - Pipette sample from wells in a source row to the selected wells.

Free Pipette - Pipette sample from a source well into the selected wells.

Decant - Remove volume from the selected wells from a desired height.

Dilute - Add volume from the selected source such as an A640 CPM into the selected wells.



Incubation and Centrifugation Blocks

Temperature Control - Specify the temperature to be maintained by the A600 HTAS for the active plate.

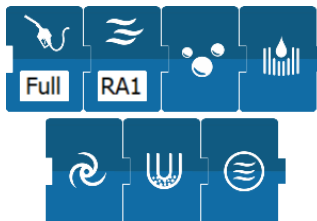
Incubate - Adjust the incubation time for the current plate.

Centrifuge - Transfer the current plate to the centrifuge and spin it for a specified time and speed.

Cell Incubator Control - Set the properties of the Cell Incubator

Put Into Cell Incubator - Put the current plate into the Cell Incubator.

Get From Cell Incubator - Get a plate from the Cell Incubator



Instrument Blocks

Refill - Refill the instrument's sheath tank.

Clean - Clean the instrument.

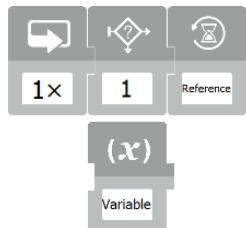
Debubble - Clear bubbles from the flow cell.

Filter Clean - Clean the instrument's 0.2 um filter to remove trapped air in the filter.

Initialize - Prime the instrument with fluid so it is ready to acquire sample.

Unclog - Unclog the line the samples travel through.

Sterilize - Clean the lines and probes with bleach.



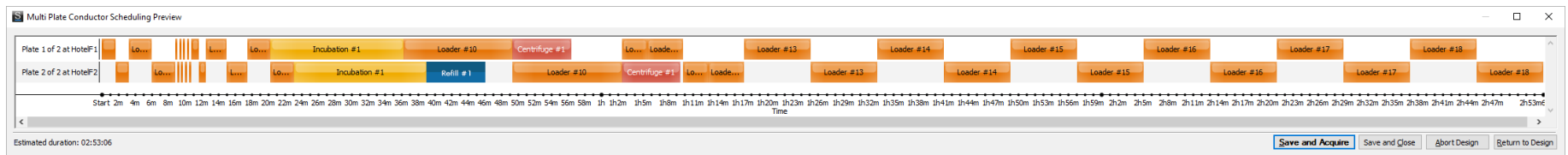
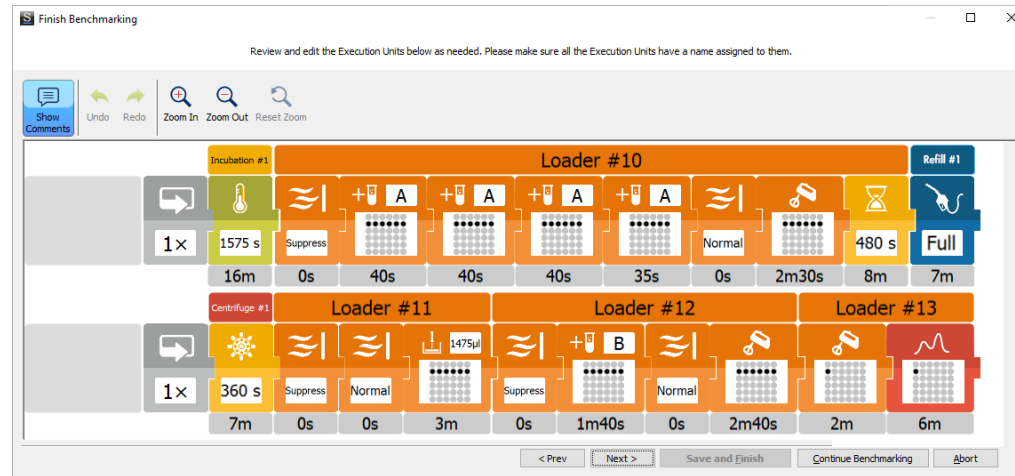
Machine Learning Blocks

Row Execution - Set how many times to repeat the selected row.

Condition - Create custom conditional statements that can be used to execute blocks following it if the condition is true.

Reference - Creates a reference point for other blocks to refer to as a starting point.

Variable - Create an element that has a value that other blocks can use throughout the protocol.



Multi-Plate Conductor (MPC)

Streamline your multi-plate experiments with the Multi-Plate Conductor (MPC). MPC works in conjunction with Visual Protocol Designer (VPD) to optimize multi-plate experiments. MPC automates the scheduling process, maximizing resource utilization at every stage of your experiment.

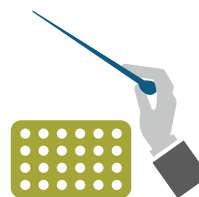
By harnessing machine learning, MPC efficiently plans complex experiments while intelligently allocating resources, ensuring optimal use of time and equipment.



Conducting Your Orchestra

Setting up an MPC is a straightforward process with three simple steps:

1. Create your VPD template that is tailored to suit your plate requirements in a single plate.
2. Conduct an initial run of the VPD. During this run, MPC will learn the duration of each step to create a benchmark for the schedule.
3. MPC generates a schedule based on the data gathered from the previous VPD run. The experiment is ready to run at this point with just a click from the user.



Dynamic Tempo

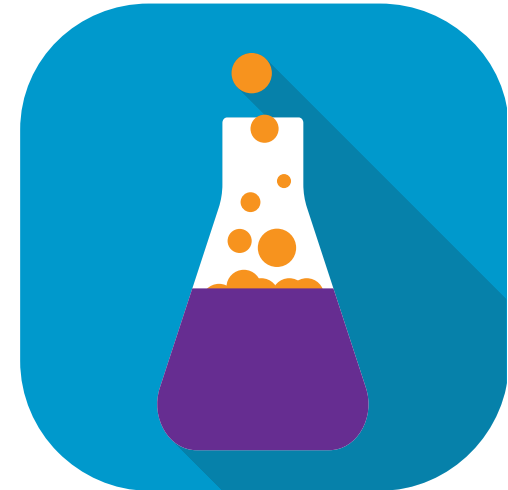
Building on VPD's capability to create data-driven conditional scenarios, MPC dynamically adjusts resource utilization and downtime. This adjustment ensures that the experiment meets its real-time requirements.

MPC dynamically adjusts its schedule according to parameters defined in the VPD. Based on the results of the conditional analysis, MPC optimizes the schedule to accommodate updated conditions.

In cases where a specific acquisition requires a different resource from the automation framework, MPC automatically recalculates and charts the optimal path for the experiment.



PROTECTION WITHOUT COMPROMISE



Instrumentation Protection

Every Stratedigm S1000 cytometer, A600 HTAS , A710 HTH comes standard with a 2-year warranty. At Stratedigm, we firmly believe our innovative and breakthrough technologies to be the best investment for any lab. And with our best-in-class warranties, we stand proudly behind our products.

Investment Protection

Customize your cytometer based on your lab's current requirements and budget, while maintaining the flexibility of field-upgrading your system in a matter of hours to a powerful 6-laser, 30-parameter S1000EON. And with over a decade of backwards compatibility between models, your Stratedigm cytometer will continue to serve you for years to come.

Protocol Protection

Whether you developed your current protocols with an earlier model Stratedigm cytometer or our newest release, "full methods compatibility" means you will be running your samples with no need for adjustments to your assay protocols. Full automation can also be implemented into an existing system to further expand the potential of a Stratedigm flow cytometer. Stratedigm products have seamless integration of automated high throughput technology, instrumentation, and software that delivers the utmost productivity.



We purchased a 4-laser, 3-spot, 17-color Stratedigm S1000EXi in 2015 and recently field upgraded to a 4-laser, 4-spot, 21-color S1000EON. The ability to upgrade to the latest specification was an important factor in our decision to go with Stratedigm. Knowing we can currently go up to 6 lasers and 30 parameters and even more in the future is perfect for our growing needs.

Angus Johnston, PhD
Monash Institute of Pharmaceutical Sciences
Monash University, Melbourne, Australia



[UT Southwestern Medical Center in Dallas] began using the Stratedigm S1000 in 2013. Since its installation, Stratedigm has provided our team with invaluable support.

Katrina Mar
UT Southwestern Medical Center, Dallas, TX

THE S1000 FLOW CYTOMETER: STATE-OF-THE-ART, 15 YEARS AND RUNNING



FLOWRAISSANCE

In the ever-evolving landscape of technology, Stratedigm is proud to offer Flowraissance—a pioneering program tailored to revitalize your trusted S1000 flow cytometer. As we commemorate a decade with your instrument, we invite you to join us on a transformative journey.

Flowraissance includes a complimentary upgrade for S1000 flow cytometers that have been under an uninterrupted service contract for 10 years and is renewed for at least 3 more years, to ensure peak performance and longevity of your investment.

We believe in continuous improvement and providing the most technologically advanced products. From 2008 to 2024, the S1000 has evolved from a 4-laser, 8-color system to a 6-laser, 45-parameter system with spectral analysis. Over 10 years of ownership, the average value of upgrading a system is approximately \$150,000.

Flowraissance is more than just an upgrade; it's a testament to our commitment to sustainability and customer-centric values. By integrating the latest technological advancements into your S1000, we aim to enhance its capabilities and extend its lifespan, all while minimizing environmental impact.

The central premise aligns perfectly with Stratedigm's long-term vision—a vision that redefines business-customer relationships by prioritizing shared success and fostering a sustainable future. Flowraissance is a heartfelt "Thank You" note embedded in the very code and components of the new technology we offer.

Contact us to learn about eligibility or
visit our website



www.stratedigm.com/flowraissance

VERSATILITY WITHOUT COMPROMISE

Research, pre-clinical, or industrial applications—no matter what the challenge, Stratedigm's suite of products is versatile and powerful enough to handle anything that comes its way. From core labs to research labs, Stratedigm cytometers and automation are right at home. Have complete peace of mind with our future-proof design that will keep your lab running the latest technologies for years to come.

Core Labs and Research Labs



- Immunophenotyping
- Multi-color analysis
- Microparticles
 - Lysosomes
 - Platelets
 - Extracellular Vesicles
 - Minicells
- Nanoparticles
- High throughput
- Protocol optimization
- Time courses

Pharma and Drug Discovery



- High throughput screening
- High-content screening
- Time courses
- Drug susceptibility
- 24/7 operation
- Walk away operation

Microbiology



- Food safety
- Drug susceptibility
- Time courses
- Trace microbial detection

Industrial



- Bacterial colony detection/optimization
- Enzyme production
- Reagent quality control
- Probiotic quality control

Pre-Clinical



- Pathogen classification
- Multi-step assays for pre-clinical including sample prep
- Multi-step analysis incorporating conditional logic
- Time courses

Agriculture



- Pesticide screening
- Spore analysis
- Ploidy
- Algae research
- Probiotic Research

POSSIBILITIES WITHOUT COMPROMISE

Basic 2 Laser, 6 Color Analysis

6 laser, Polychromatic Analysis (7-30 Parameters)

FSC PMT Upgrade

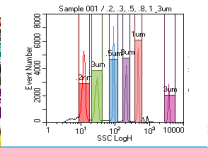
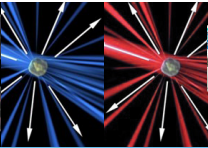
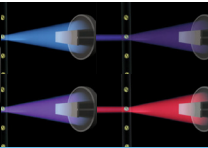
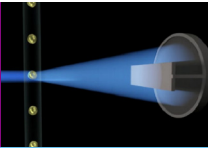
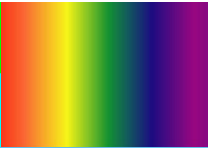
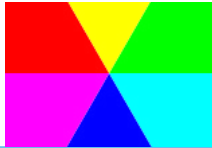
Quad-FSC: 375, 405, 488, and/or 640 nm

Dual SSC: 488 and/or 405 nm

Scalability (Laser and Colors)

Hyper-Dynamic Scatter Range 0.2 μm to 7 μm

Integrated Fluidics



	Basic 2 Laser, 6 Color Analysis	6 laser, Polychromatic Analysis (7-30 Parameters)	FSC PMT Upgrade	Quad-FSC: 375, 405, 488, and/or 640 nm	Dual SSC: 488 and/or 405 nm	Scalability (Laser and Colors)	Hyper-Dynamic Scatter Range 0.2 μm to 7 μm	Integrated Fluidics
S1000EON	✓	✓	✓	✓	✓	✓	✓	✓
SE520EON	✓						✓	✓

Absolute Volumetric Counting

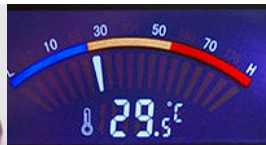
Automated Titration

Digital Temp Control and Automated Heat Studies

Liquid Handling

Expanded Fluidic Tank Capacity

Wide Array of Plate Types Supported

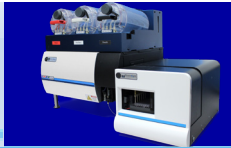


	Absolute Volumetric Counting	Automated Titration	Digital Temp Control and Automated Heat Studies	Liquid Handling	Expanded Fluidic Tank Capacity	Wide Array of Plate Types Supported
A600 HTAS	✓	✓	✓	✓	✓	✓
A640 CPM				✓	✓	
A710 HTH						✓
A800 CI			✓			✓

Automated
Shutdown/Startup



High Throughput
and Automation
Ready



Optional Barcode
Scanner



Remote Instrument
Control



Built-in QC and
Remote Support



Expanded Fluidic
Tank Capacity



Best-in-class
2-Year Warranty



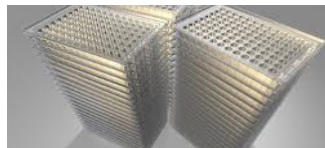
S1000EON



SE520EON



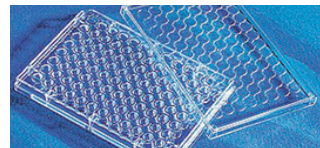
Multi-plate Support



Integrated
Barcode Scanner



Automated Delidding
Procedures



24/7 Automated
Operation



Multi-plate Experiment for
Time Courses



A600 HTAS



A640 CPM



A710 HTH



A800 CI



S1000EON

Flow Cytometer

Up to 6 Lasers, 30 Parameters,
21" x 21" Footprint



When we heard about the S1000EON's release [in the US], we jumped at the opportunity to be one of the first adopters. So, we field-upgraded our 4-laser, 14-color, 3-spot S1000EXi to a 4-laser, 20-color, 4-spot S1000EON. Knowing that our systems can always be upgraded when the latest Stratedigm technology comes out is awesome. It's easily saved us hundreds of thousands of dollars. I would definitely call these systems 'future-proof'.

Jim Henthorn

*Research Assistant III, Flow & Imaging Lab Manager
Oklahoma University Health Sciences Center*



True Investment Protection

The S1000EON (pronounced "S-1000-eon") ushers in a new age of future-proof flow cytometry. Gone are the days of discontinued service of instruments and obsoleted hardware, both of which diminish return on investment (ROI). Stratedigm's unlimited upgradeability is unrivaled in the market today. No matter when you purchased your S1000 cytometer, you can be confident that you will have access to the latest innovations via field upgrades. The Stratedigm S1000EON integrated and modular design ensures that the architecture is functionally open-ended and that upgrading is simple and economical. Given the diversity of applications and dyes available today, the ability to customize your cytometer to your research needs is essential. True to its name, the S1000EON will propel your research for many years to come.



Brilliant In More Ways Than One

From the S1000EXi, the S1000EON increases the number of parameters from 22 to 30 and lasers from 4 to 6. It also doubles the throughput, increases the dynamic range to 5 decades, creates more spatially separated interrogation points, and boosts sensitivity up to 300%! All of these major improvements are in the same footprint and at the same price as our 1st S1000 launched in 2008. This is our commitment to Cytometry Without Compromise™.



Continuous Availability

Uptime is an important consideration when purchasing a cytometer and this is Stratedigm's highest priority. Our S1000EON is based on the technology we have been developing since 2004—a tried-and-true architecture that ensures the ultimate in reliability. Start with the optical bench: the patented, single plate "unibody" construction is the underpinning of a rugged design that performs to spec even if moved or jostled. The unique expanded polypropylene (EPP) enclosure eliminates vibrational and temperature-related instability—as an added bonus it reduces weight and part count. Automated software routines for startup, shutdown, and other tasks keep the instrument at the ready, while continuous software monitoring of key subsystems alerts you when attention is needed...before it becomes a problem. Our industrial IoT-based Remote Diagnostics can relay critical performance statistics to our service center—improving service levels and uptime, and decreasing costs. The S1000EON is ready when you are.

Lasers

This system is designed to support up to 6 lasers with 4 points of interrogation.

- 372 nm – 75 mW
- 405 nm – 100 mW
- 488 nm – 150 mW
- 532 nm – 100 mW
- 552 nm – 100 mW
- 561 nm – 100 mW
- 640 nm – 100 mW
- 805 nm – 100 mW

Other laser wavelengths and powers available by request.

Detector Parameters/Data Acquisition

- Dynamic Range: 5 decades for acquisition, 7 decades for analysis
- Linearity: $R^2 > 99\%$

Forward Scatter (FSC) – enables separation of unfixed platelets from noise.

- FSC resolution: < 500 nm polystyrene beads
- FSC scales: log and linear
- FSC parameters: width, peak height, area
- Optional FSC photomultiplier tube (PMT) detector
- Optional Quad-FSC: 375, 405, 488, and/or 640 nm

Side Scatter (SSC) – resolves lympho-, mono-, and granulocytes.

- SSC resolution: < 200 nm polystyrene beads
- SSC scales: log and linear
- SSC parameters: width, peak height, area
- Optional Dual-SSC: 405 and/or 488 nm

Parameters

- Maximum number of parameters: 30
- Sensitivity: < 80 MESF
- Fluorescence resolution: < 2.5% CV
- PMT scales: log and linear
- PMT parameters: width, peak height, area

Analysis Rate and Carryover

- Maximum analysis rate: up to 20,000 events/sec
- Carryover: <0.1%, with automatic backflush between samples

Fluidics Tray

- Integrated fluidics tray does not increase footprint of the instrument
- Automated startup, shutdown, and cleaning cycles
- Automated decontamination procedure using on-board cleaning solution for all components in contact with sample
- Tank capacity: 4 L sheath, 4 L waste, 4 L auxiliary solution
- Optional expanded fluidics tank for automated filling of sheath and drainage of waste tanks

372 nm - Near-UV (75 mW)	405 nm - Violet (100 mW)	488 nm - Blue (150 mW)	532 nm - Green (100 mW)
BUV395 (405/20) DAPI (440/40) BUV496 (530/30) BUV563 (580/30) BUV661 (676/29) BUV737 (725/40) BUV805 (780/60)	BV421 (440/40) DAPI (440/40) BV480 (530/30) BV510 (530/30) BV570 (580/30) BV605 (615/30) BV650 (676/29) BV711 (725/40) BV750 (780/60) BV786 (780/60)	FITC (530/30) PE (580/30) PE-CF594 (615/30) PI (615/30) PE-Cy5 (676/29) PerCP (676/29) PE-Cy5.5 (725/40) PerCP-Cy5.5 (725/40) PE-Cy7 (780/60)	PE (580/30) PE-CF594 (615/30) PI (615/30) mCherry (615/30) RFP (615/30) PE-Cy5 (676/29) PE-Cy5.5 (725/40) PE-Cy7 (780/60)
552 nm - Olive (100 mW)	561 nm - Yellow (100 mW)	640 nm - Red (100 mW)	805 nm - IR (100 mW)
PE (580/30) PE-CF594 (615/30) PI (615/30) mCherry (615/30) PE-Cy5 (676/29) PE-Cy5.5 (725/40) PE-Cy7 (780/60)	PE (580/30) PE-CF594 (615/30) PI (615/30) mCherry (615/30) PE-Cy5 (676/29) PE-Cy5.5 (725/40) PE-Cy7 (780/60)	APC (676/29) Alexa700 (725/40) APC-R700 (780/60) APC-H7 (780/60)	Alexa790 (810LP) BUV805 (810LP)

Other dyes and filters available upon request.

Sample Input

- Dead volume: < 8 μ L
- Minimum sample volume: < 20 μ L
- Maximum particle size: up to 40 μ m polystyrene beads and up to 130 μ m cells
- Patented low insertion force single tube loading

Operating Conditions

- Operating conditions:
 - 60–86 °F (15–30 °C)
- Size (including fluidics tray):
 - 21.5" W x 21" D x 24" H
 - 54.6 cm x 53.3 cm x 61 cm
- Weight (including fluidics tray):
 - < 74 lbs (35 kg)
- Power:
 - 110/115/230 VAC, 50–60 Hz



SE520EON

Flow Cytometer

2 Lasers, 6 Colors



Stratedigm's flow cytometry automation suite has been one of the most exemplary, comprehensive, and reliable FC systems that I have dealt with in my 12-year experience. At the core of each of our FC systems is an SE520 and they have been perfect for us. Their high sensitivity and performance have been crucial to our applications.

*Shawn Ramsaroop
Senior Research Scientist
Aperture Bio*



Power Within Your Budget

The first family of Stratedigm analyzers were designed specifically for essential applications. Continuing that legacy, Stratedigm's SE520EON series gives uncompromised performance for flow cytometer users who run demanding, routine applications—without cutting corners. When you're looking for the perfect fixed-configuration flow cytometer, you should never have to sacrifice dependability and performance just to stay on budget.

Continuous Availability

Uptime is an important consideration in purchasing a cytometer and Stratedigm takes this very seriously—designing and manufacturing quality and reliability in the U.S.A. from the get-go. Start with the optical bench—this patented single plate “unibody” construction is the underpinning of a rugged design that performs to-spec even if moved or jostled. The unique EPP enclosure eliminates vibrational and temperature-related instability—and as an added bonus, reduces weight and part count. Automated software routines for startup, shutdown, and other tasks keep the instrument at the ready. Continuous software monitoring of key variables alerts you when attention is needed...before it becomes a problem. Our Remote Diagnostics Agent can relay real-time service information and critical performance stats to our service center—improving service levels and uptime, and decreasing costs. The SE520EXi is ready when you are.

Brilliant In More Ways Than One

To see or not to see...that is the difference between high-end systems and many of the “low-cost” systems on the market today. In order to remove the cost as a potential product disadvantage, many manufacturers will compromise by using inferior components or eliminating functionality that ensures 20/20 vision: resulting in a cytometer that cannot “read the fine print” in your sample. For routine applications with high antigen density, this may be fine. But in uncharted territory, how do you know what you are missing? Stratedigm has optimized the optical, fluidic, and electronic elements to maximize the amount of light generated and collected from the sample, while minimizing the amount of background light that clouds the picture. The proof is in the data. The best part is we do all of this without breaking your budget.

Laser

- System is designed to support two lasers with spatial separation
- Lasers:
 - Solid-state 488 nm - 150 mW
 - Solid-state 640 nm - 100 mW

Detector Parameters/Data Acquisition

- Dynamic Range:
 - 5-decades for acquisition
 - 7-decades for analysis
- Forward scatter (FSC) – enables separation of unfixed platelets from noise
 - FSC resolution: < 500 nm polystyrene beads
 - FSC scales: log and linear
 - FSC parameters: width, peak height, area
- Side scatter (SSC) – resolves lympho-, mono- and granulocytes
 - SSC resolution: < 200 nm polystyrene beads
 - SSC scales: log and linear
 - SSC parameters: width, peak height, area
- Fluorescence channels:
 - Standard number of colors: 6
 - Sensitivity: < 100 MESF
 - Fluorescence resolution: < 2.5% CV
 - PMT scales: log and linear
 - PMT parameters: width, peak height, area
 - Time: 13 μ sec resolution

Analysis Rate and Carryover

- Analysis rate: up to 20,000 events/sec
- Carryover: < 0.1%, with automatic backflush between samples

Sample Input

- Dead volume: < 8 μ L
- Minimum sample volume: < 20 μ L
- Maximum particle size: up to 40 μ m polystyrene beads and up to 130 μ m cells
- Patented low insertion force single tube loading

Fluidics Tray

- Integrated fluidics tray does not increase the footprint of the instrument
- Automated startup, shutdown, and cleaning cycles
- Automated decontamination procedure using on-board cleaning solution for all components in contact with sample
- Tank capacity: 4 L sheath, 4 L waste, 4 L auxiliary solution
- Optional automated sheath tank fill and waste drainage

Operating Conditions

- Operating conditions: 60–86 °F (15–30 °C)
- Size (including fluidics tray): 21.5" W x 21" D x 24" H (54.6 cm W x 53.3 cm D x 61 cm H)
- Weight (including fluidics tray): < 70 lbs (35 kg)
- Power: 110/115/230 VAC, 50–60 Hz

**488 nm - Blue
(150 mW)**

FITC (530/30)
PE (580/30)
PerCP/PE-Cy5 (676/29)
PE-Cy7 (780/60)

**640 nm - Red
(100 mW)**

APC (676/29)
APC-Cy7 (780/60)



A600 HTAS

High Throughput Auto Sampler Flat-6 Injection, Absolute Counting Liquid Handling



We've had our [Stratedigm S1000 cytometer and A600 HTAS] since 2016. The A600 has proven itself to be a workhorse and we've run over 50K acquisitions on the plate system with minimal downtime and outstanding results.

*Dr. Orit Sagi-Assif
Tel Aviv University*



Brilliant In More Ways Than One

The A600 HTAS' (High Throughput Auto Sampler) design is as unique and revolutionary as Stratedigm's flow cytometers. A single, fully ceramic syringe pump with an integrated valve assembly allows for reliability, dynamic range, absolute cell counting, and precision far exceeding other conventional plate loaders. The A600's fluidics architecture keeps samples away from all valves and pumps, virtually eliminating carryover and dead volume. A proprietary overinject feature allows the A600 HTAS to deliver the entirety of the aspirated sample to the flow cytometer. This enables the complete analysis of rare samples, while the optional solid-state temperature control module protects the sample during long acquisitions.

Speed You Require

The A600 HTAS is designed for speed. Stratedigm's Flat-6 Technology™ enables aspiration and injection through six independent probes working in concert, delivering unparalleled speed and precision. This is achieved through faster aspiration, decreased wash time, and reduction of redundant robot motion required to process a full microtiter plate.

Ease of Use You Expect

The A600 HTAS is seamlessly integrated with Stratedigm's CellCapTure™ software, allowing for intuitive experiment design and the ability to use a variety of tubes and plates. CellCapTure™ allows experiments to be designed for temperature and/or time-based incubation studies. The presence of preset modes in the CellCapTure™ software enables new and experienced users alike to design optimal experiments with minimal training. Users can also use drag-and-drop programming via our patented Visual Protocol Designer (VPD) and leverage easy template creation to build Multi-Plate Experiments. Whether users create simple, one plate experiments or perform complex, multi-plate protocols, CellCapTure™ makes using the A600 HTAS effortless.

Product Introductions

Stratedigm's A600 High Throughput Auto Sampler (HTAS) is more than just a high-speed plate loader. With an all-ceramic high precision pump and six injection probes working in unison, it delivers speed, functionality, and reliability beyond any other conventional plate loaders on the market. The A600 HTAS comes standard with sample prep and reagent mixing capabilities, optional and programmable solid-state sample temperature control, sample incubation, aspiration, and offers injection volumes ranging from 5-400 μ L.

Its proprietary design ensures that your entire sample is delivered to the analyzer with true zero dead volume capability. An integrated barcode scanner can also be added to keep track of your microtiter plates. The A600 HTAS can house 12 Eppendorf tubes or 24 cluster tubes in addition to a variety of different microtiter plate models for reagent/sample mixing and preparation. The A600 HTAS integrates seamlessly with any S1000 and SE520 series analyzer and offers advanced user-defined programming via Stratedigm's patented Visual Protocol Designer (VPD) in CellCapTure™ software.

Performance:

- Throughput: 96 wells < 15 min using Rapid Screening Mode.
- Dead volume: zero dead volume design ensures no sample is wasted in internal fluid path
- Carryover: < 0.5% based on control beads
- Reagent mixing: up to 24 different reagents can be added to a microtiter plate
- Sample volume: user-adjustable via CellCapTure™ software from 5–400 μ L
- Wash volume: user adjustable via CellCapTure™ software
- Absolute volumetric counting: < \pm 10% error

Plate Compatibility:

- 24-well: flat and round bottom
- 96-well: U-bottom, V-bottom, flat bottom, and deep well
- 384-well: flat bottom
- Tubes: 12 or 36 Eppendorf tube adapter, 96 cluster tubes

System Compatibility:

- Software: Stratedigm CellCapTure™ software
- Flow cytometer: any S1000 or SE520 series analyzer

Options and upgrades:

- Temperature control: user adjustable via CellCapTure™ software from 8–40 °C using solid-state technology
- Incubation: user adjustable via CellCapTure™ software
- Barcode scanner type: integrated
- Sample aspiration and mixing: programmable suck and spit via injection probes

Other Specifications:

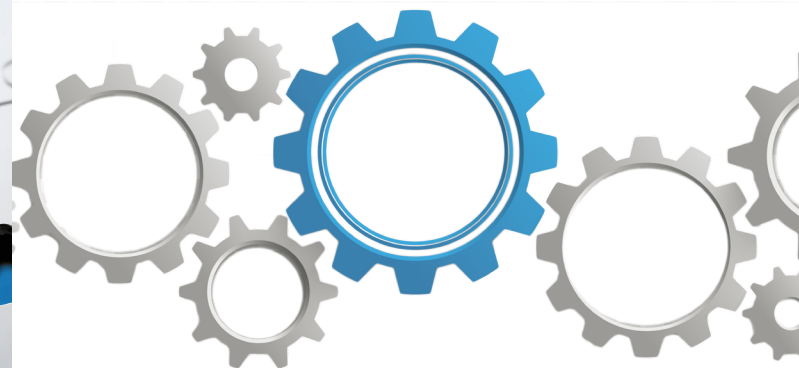
- Size: < 11" W x 15" D x 13" H depending on upgrade options
- Weight: < 40 lbs depending on upgrade options
- Noise level: < 65 dBA
- Operating power: 100–240 VAC
- Operating temperatures: 60–86 °F (15–30 °C)



A640 CPM

Cell Prep Module

Expanded Capacity Reservoirs



Flexibility You Demand

The A640 Cell Prep Module (CPM) - the perfect addition to the A600 HTAS. With its liquid handling capabilities from four 1 Gallon (XL) smart cubitainers, the A640 CPM enables users to add bulk reagents with ease, without the fear of cross-contamination or volume limitations. The innovative magnetic cap ensures hassle-free connection of fluidics, allowing for easy removal and addition of Smart Cubitainers. The A640 CPM features seamless sensors to detect cubitainer presence or absence as well as liquid levels. This frees up more space on Cluster and Eppendorf Racks for specialized reagents and increases effective plate capacity, enabling new possibilities while improving workflow.

Ease of Use You Expect

Experience the ease and simplicity of Stratedigm's cutting-edge A640 CPM with magnetic Easy-Dock Technology. With the A640 CPM, swapping fluids has never been easier - users can effortlessly remove and replace smart cubitainers at any time, without disrupting the suite or worrying about fluidics level sensors. Stratedigm's signature LED indicators allow users to easily identify when cubitainers need to be refilled, ensuring seamless and uninterrupted workflow. In keeping with Stratedigm's commitment to simplicity, the A640 CPM is designed to make laboratory processes more efficient and intuitive than ever before.

Seamlessly Integrated

Designed to seamlessly integrate with Stratedigm's Automation suite, this module optimizes previously unused space above the A600 HTAS while minimizing added footprint. Stratedigm's all-in-one software, CellCapTure, operates and maintains the A640 CPM, giving users complete control over bulk reagent addition with just a few clicks using our patented Visual Protocol Designer (VPD). The A640 CPM's user-defined injection speed in combination with the A600 HTAS adjustable injection height capabilities ensures maximum efficiency without adding complexity. This cutting-edge technology enhances the automation suite's abilities, making it the perfect addition to your research toolkit.

Product Introductions

The A640 Cell Prep Module by Stratedigm takes the already feature-packed A600 HTAS and the entire Stratedigm Automation Suite to the next level. With hot-swappable cubitainers that can be effortlessly lifted and placed into the A640 CPM, the fluidics versatility of the system has been greatly enhanced. The seamless integration with CellCapTure and the ease of changing out the cubitainers makes it a breeze for both novice and expert users to cater to the specific needs of any experiment.

Features:

- Slots for 4 cubitainers
- Usable with all plates compatible with the A600 HTAS
- Full Visual Protocol Designer (VPD) integration

System Compatibility:

- Software: Stratedigm CellCapTure™ software
- Flow cytometer: any S1000 or SE520 series analyzer - requires the use of a Stratedigm A600 HTAS for integration.

Size, Weight, Power:

- Footprint/Size: 17.5" x 16.5" x 19"
- Weight (Without Fluids): < 20 lbs (9.1 kg)
- Operating Power: 12 Volts 5 Watts

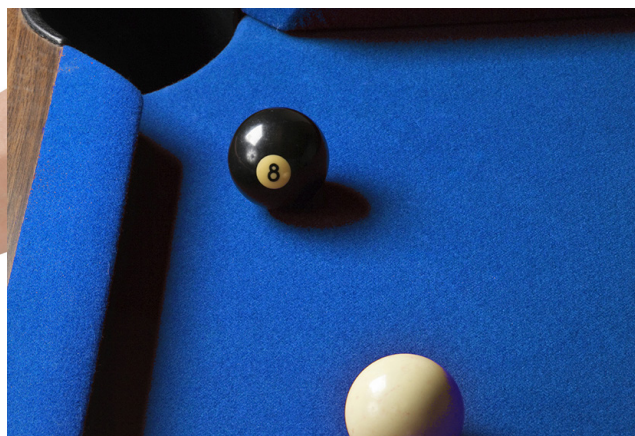
Cubitainer Compatibility:

- Stratedigm only
- Cubitainer volume: 1 gallon
- Allowed fluids: Bleach, wash buffer, lyse/lysis buffer...
- Polyethylene Container



A710 HTH

High Throughput Hotel Load-and-Go Automation Suite™



Automation You Will Love

The all-new A710 High Throughput Hotel (HTH) has been completely redesigned from the ground up. It now has a revolutionary new kinematic auto-alignment system to ensure perfect plate placement every time. And with our proprietary new alignment system, there is no need for ultra-flat surfaces—making automation even more accessible to any lab. Completely reimagine automation-based experiments with drag-and-drop programming via our patented Visual Protocol Designer (VPD) and leverage templates to build multi-plate experiments. And to make things even better, the A710 HTH now comes standard with a two-year warranty.

Ease of Use You Expect

The A710 HTH works in perfect synchronization with your A600 HTAS and the CellCapTure™ software suite. The straightforward template-driven experiment design and automated fluidic modes provide users with a simple “load-and-go” workflow. Barcode your plates and the integrated advanced imaging system automatically matches your plate template ensuring data integrity.

Flexibility You Demand

Automated software controls provide users the ability to run lidded or unlidded experiments with the same variety of plate types compatible with the A600 HTAS. The A710 now has a higher-per-hotel plate capacity than its A700 predecessor; additionally, it has user-adjustable random access racks to easily accommodate deep-well format plates on the fly. Users can also effortlessly manage multiple experiments requiring different sets of reagents with our all-new A710 compatible reagent rack! And even if you’re not an existing Stratedigm flow cytometry customer, our A710 is now available for OEM!

Features:

- Kinematic auto-alignment for perfect plate placement
- Simple one-touch setup
- Works on most lab surfaces
- Advanced imaging – automatic plate detection and barcode scanning (optional)
- Standard two-year factory warranty

Storage Options:

- Accommodates up to 8 random access or sequential racks
- High-Density random access rack (RAR) – up to 12 plate capacity per rack for standard depth plates and up to 6 plate capacity for deep-well plates per rack
- Sequential access rack (SAR) – 30 plates per rack

Plate Compatibility:

- Lidded or unlidded experiments
- 24-well: flat and round bottom
- 96-well: U-bottom, V-bottom, flat bottom, and deep-well
- 384-well: flat bottom
- Tubes: 12 or 36 Eppendorf tube adapter, 24 or 96 cluster tubes

Optional Accessories:

- Barcode scanner – automatically match plates to plate templates
- Multi-reagent rack (MRR) – up to six 12- or 24-well Stratedigm reagent racks

System Compatibility:

- Software: Stratedigm CellCapTure™ software
- Flow cytometer: any S1000 or SE520 series analyzer – requires the use of a Stratedigm A600 HTAS for integration
- Now available for OEM with Stratedigm's MotionCapTure software

Size, Weight, Power:

- Power requirements: 100–240 V
- Operating environment: 60–86 °F (15–30 °C)
- Weight: 30 lbs
- Size: 22" D x 32" H



A800 CI

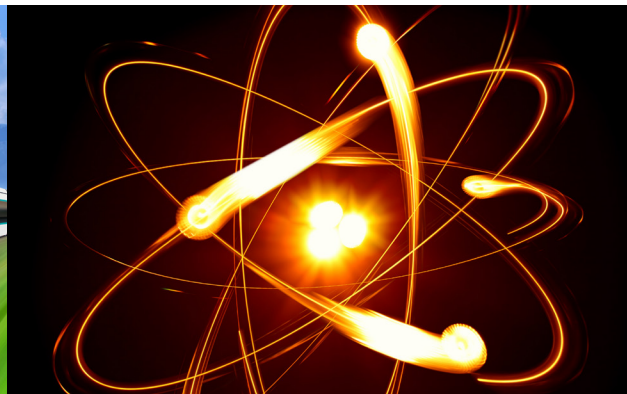
Cell Incubator

**44 Plate Capacity, Orbital Shaking,
Full Environment Control**



...adding an A800 [Cell Incubator] to our workflow makes working with many automated assays requiring incubation super simple. Combined with their Visual Protocol Designer software, the full automation system has allowed for fast and easy sample preparation and analysis.

*Shawn Ramsaroop
Senior Research Scientist
Aperture Bio*



Reliable and Fast

Your samples are valuable and a well-maintained incubation environment is what keeps them safe. The A800 Cell Incubator (CI) has a range of ultra-stable environments to ensure your samples are stored in the most optimal conditions no matter the duration. The A800 allows for precise temperature control, active humidity control, and stable CO₂ gassing. With the programmable true orbital shaking option, your samples will be perfectly aerated and mixed. The fast plate retrieval time makes the A800 CI perfect for all high throughput assays and workflows, giving you results when you need them.

Small and Feature-Rich

The A800 Cell Incubator (CI) comes in a small footprint that can be customized to user needs while maximizing lab space. Its 44 microtiter plate capacity makes it ideal for small-scale integration, highly miniaturized applications, timed incubation assays, as well as laboratories with room constraints. With options for temperature range, CO₂ gassing, active humidity control, true orbital shaking, and multiple cleaning modes, the A800 will exceed all your application needs. Since the A800 CI floor and benchtop models are stackable, users can effectively double their environmental storage capacity and/or create multiple distinct environments.

Simple and Intuitive

CellCapTure™ has a simple and intuitive interface that allows users to easily program and integrate their A800 Cell Incubators (CI) into their workflows. Users can use drag-and-drop programming via our patented Visual Protocol Designer (VPD) and leverage easy template creation to build Multi-Plate Experiments. Whether creating simple one plate experiments or performing complex, multi-plate protocol, CellCapTure™ makes using the A800 CI effortless.

Product Introductions

The A800 Cell Incubator Short Range (CI-SR) and A800 Cell Incubator Wide Range (CI-WR).

- Flexible configuration:
 - Benchtop option
 - Floor option
- Active humidity control
- Compact footprint
- Up to 44 plate capacity
- Optional upgrades:
 - True orbital shaking
 - Fast CO₂ gassing
 - Preventative automated daily decon
 - Full system decon

A800 CI-WR (Wide Range)

Temperature Range and Humidity:

- 4–50 °C ±0.3 °C
- 90-95%

Size, Weight, Power:

- Dimensions: 85 cm x 74 cm x 147 cm (package)
- 485 mm W x 514 mm D x 1203 mm H (+20–35 mm for feet); Transfer height: 1000 mm
- Net weight: 125 kg; Tare: 57 kg; Gross weight: 182 kg
- Power: 500 W Power Consumption; 100 V / 50 Hz; 115 V / 60 Hz; 230 V / 50 Hz; Switchable

A800 CI-SR (Short Range)

Temperature Range and Humidity:

- 33–50 °C ±0.2 °C
- Max 95% humidity

Size, Weight, Power:

- Dimensions: 85 cm x 74 cm x 147 cm (package)
- Net weight: 88 kg
- Tare: 57 kg;
- Gross weight: 145 kg
- Power: 450 W Power Consumption; 100 V/50 Hz; 115 V/60 Hz; 230 V/50 Hz; Switchable



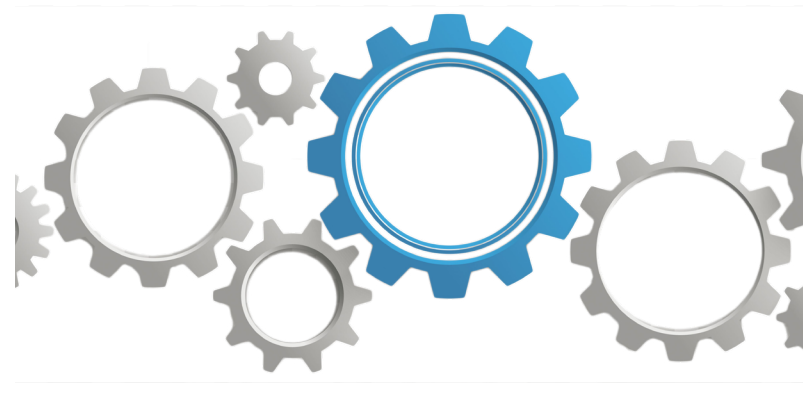
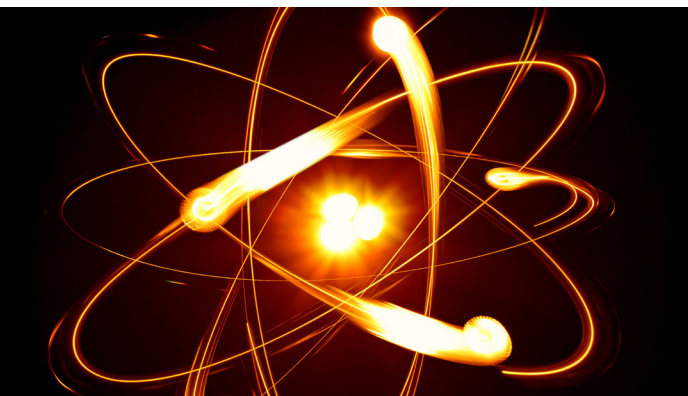
A800 Cell Incubator Benchtop Model



A810 CI

Cell Incubator

6 Plate Capacity, Temperature Control



Small and Feature-Rich

The A810 Cell Incubator (CI) is designed with a focus on small size and maximum functionality. Each A810 is a bench-top incubator occupying a single hotel slot of the A710, taking up minimal space while adding smart temperature control for up to 6 plates. A maximum of six A810 units can be used on a single system, allowing for temperature configurations from 8-40°C which can all be reached within 40 minutes. The A810 CI detects the presence of plates in each nest, and communicates the status through both CellCapTure and indicator lights positioned beside each door. This enables both the user and the automation suite to effectively track and execute multi-plate assays, ensuring reliable performance. Innovative design features allow the A810 to maintain temperatures during rapid plate access and track plate presence.

Flexibility You Demand

Stratedigm's A810 Cell Incubator is designed for maximum flexibility in laboratory automation. Its compatibility with the A710 HTH allows for both lidded and unlidded experiments to be run using a variety of plate types, including deep well plates and micro-centrifuge tube racks. The configurable positions of the A810 allow a lab to optimize for a compact footprint OR allow for additional processing operations. Each individual A810 unit occupies less than 1 square foot of space, effortlessly fitting into the A710 HTH hotel rack slots. With its compact design and impressive throughput capabilities, the A810 stands out as an excellent option for laboratories of varying sizes, thanks to its adaptable configuration.

Seamlessly Integrated

The A810 Cell Incubator has been designed for automation without compromising existing workflows. Its small footprint allows for easy upgrades to existing Stratedigm automation suites with a minimum space requirement and the patented Visual Protocol Designer (VPD) allows for drag-and-drop programming of multi-plate experiments. An automation suite with multiple A810 installations can hold samples at a storage temperature while incubation is performed on desired plates. Additionally, it is designed to seamlessly complement the A800 CI if required, enabling users to harness the strengths of both units without the need to make a choice between them. With a small footprint and a host of customizable features, the A810 Cell Incubator is an excellent choice for labs looking to streamline their workflows and optimize their experimental capabilities.

Product Introductions

Introducing the A810 CI, the perfect cell incubator for labs with limited space. With its small footprint, this incubator is compact and customizable, making it ideal for small-scale integration, highly miniaturized applications, and timed incubation assays. Designed to work with Stratedigm's automation suite, the A810 is easy to incorporate into your workflows using CellCapTure's simple and intuitive interface. With the ability to handle deep-well plates, the A810 is perfect for labs that require more flexibility in plate compatibility. With its efficient package, the A810 saves you both time and cost, and its simple use makes it easy for anyone in the lab to operate.

Plate Compatibility

- 24-well: flat-bottom and round-bottom
- 96-well: U-bottom, V-bottom, flat-bottom, and deep-well
- 384-well: flat-bottom
- Micro-centrifuge tube racks

Temperature Range:

- 8-40°C \pm 0.3 °C

Size, Weight, Power:

- Footprint/Size: 8.75" x 9.125" x 24.4"
- Weight: < 30 lbs
- Operating Power: 24V DC; 170 Watts

System Compatibility:

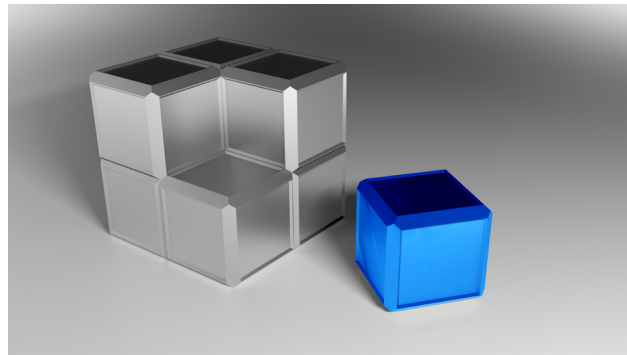
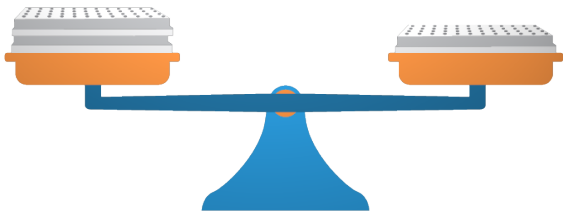
- Software: Stratedigm CellCapTure™ software
- Software: Stratedigm Visual Protocol Designer programming.
- Flow Cytometer: any S1000 or SE520 series analyzer—requires use of Stratedigm A600 HTAS and A710 HTH for integration



A900 IPC

Intelligent Plate Centrifuge

Auto Balance, 2 plates



Intelligently Adaptive

The A900 Intelligent Plate Centrifuge (IPC) is a testament to Stratedigm's commitment to innovation and excellence in laboratory technology. Its compact design and automatic self-balancing capabilities make it a standout in the field of centrifugation. With its advanced Automatic Plate Balancing (APB) technology, it automatically balances up to 300 grams of imbalance between two plates with ease. Its adaptability to wide operational speeds and compatibility with a range of plate types make it a versatile and indispensable tool in any laboratory setting. Just as Stratedigm's flow cytometers are known for their reliability and precision, the A900 IPC brings these same qualities to the world of centrifugation, revolutionizing the way we approach sample preparation and analysis.

Stand Alone or Integrated

The A900 centrifuge's design is as unique and revolutionary as Stratedigm's other products. Its versatility and reliability make it a valuable addition to any laboratory setup, whether used as a standalone unit or integrated with a Stratedigm automation suite. With the A900, complex centrifugal workflows can easily be implemented into new and existing experiments, regardless of the user's skill level. Its seamless integration with Stratedigm's automation suite allows for the creation of multi-plate and multi-step centrifugal experiments using the Visual Protocol Designer. The A900's unique design ensures that it meets the demands of both stand-alone and integrated applications, making it an ideal choice for a wide range of laboratory setups.

Built to Last

Experience the A900 Intelligent Plate Centrifuge, where advanced design meets robust performance. The A900 combines safety and reliability with AR500 armor plating, delivering a compact yet highly secure design. A direct drive motor eliminates the wear found in belt drive systems used in other plate centrifuges. The F1-grade ceramic bearing provides exceptional reliability. With no consumable parts needing regular maintenance, the A900 promises longevity and consistent performance under intense usage. The A900 represents innovation, reliability, and durability.

Product Introductions

The A900 Intelligent Plate Centrifuge revolutionizes lab operations with its advanced automation and unparalleled self-balancing capability. As the industry's most compact self-balancing centrifuge, it handles significant imbalances effortlessly, ensuring consistent and accurate results. Its versatility allows it to accommodate various plate types, enhancing its utility in diverse applications. Engineered for both standalone use and seamless integration with the Stratedigm automation suite, the A900 offers unmatched flexibility. Constructed with durable, reliable components and no consumable parts, the A900 is ready to meet any challenge in your lab.

Plate Compatibility

- 24-well: flat-bottom and round-bottom
- 96-well: U-bottom, V-bottom, flat-bottom, and deep-well
- 384-well: flat-bottom
- Micro-centrifuge tube racks

Automatic Plate Balancing

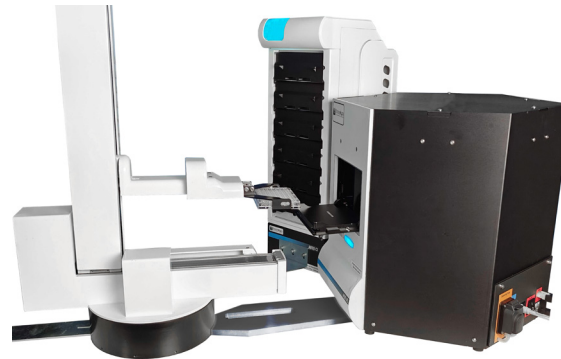
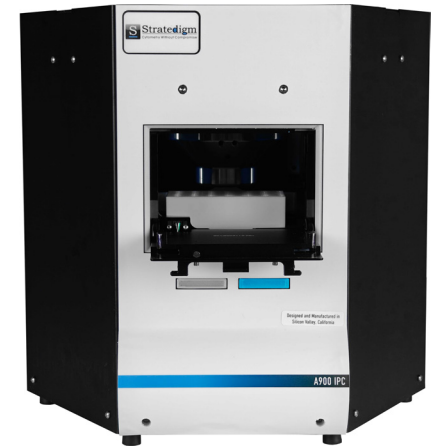
- Up to 300 grams of imbalance correction
- Able to run with a single plate or two plates

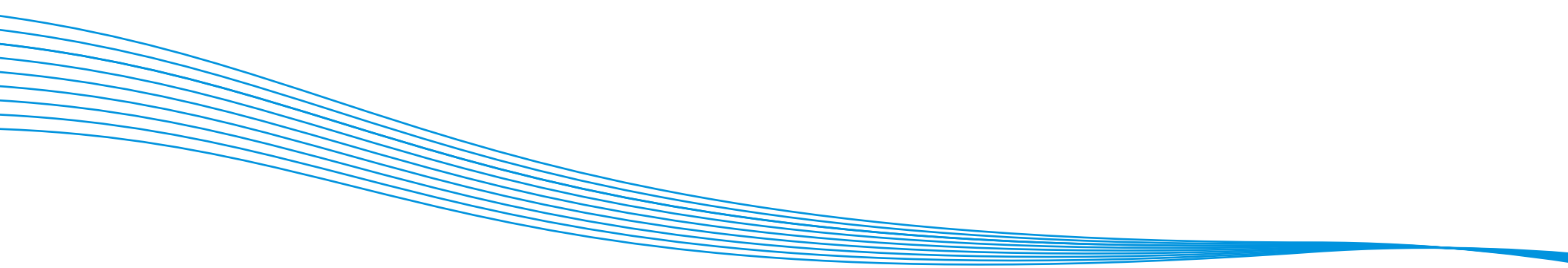
Size, Weight, Power:

- Footprint/Size: 18.5" x 18" x 16"
- Weight: < 100 lbs
- Power requirements: 100–240 V

System Compatibility:

- Software: Stratedigm CellCapTure™ software
- Software: Stratedigm Visual Protocol Designer programming.
- Flow Cytometer: any S1000 or SE520 series analyzer—requires use of Stratedigm A600 HTAS and A710 HTH for integration.
- Stand Alone Model Software: Stratedigm MotionCapTure Software





For Research Use Only. Not for use in diagnostic or therapeutic procedures.

Stratedigm follows a policy of continuous product improvement. Specifications are subject to change without notice.

U.S. Patent No. 10338897B2, U.S. Patent No. 7821631B1, U.S. Patent No. 8202059B1,
U.S. Patent No. 8202733B1, U.S. Patent No. 8570500B2, U.S. Patent No. 9108196B1,
U.S. Patent No. 9857284B1, U.S. Patent No. 9952136B2, U.S. Patent No. 10571386B2

Purchase does not include or carry any right to resell or transfer this product either as a stand-alone product or as a component of another product. Any use of this product other than the permitted use without the express written authorization of Stratedigm, Inc. is strictly prohibited. Product availability and prices are subject to change without notice.

Stratedigm, Stratedigm Logo, and all other trademarks are property of Stratedigm, Inc.

(408) 512-3901

info@stratedigm.com

www.stratedigm.com

v12.1.7 WP