

# Cardiac Safety Signals Triggered by the Covid Jab

By Craig Paardekooper

Here I will be using [Safety Signal](#) to obtain the Proportional Reporting Ratio for each symptom of cardiac disorder. Safety Signal searches 99 different vaccines in VAERS, using 33 years of data, and displays the safety signals for 16849 different symptoms.

If the PRR is greater than 2 then this constitutes a safety signal. All safety signals are highlighted in RED.

If the PRR is greater than 1 then there is a significant excess incidence, but not enough to trigger a safety signal.

## Index

Chest Pain

Angina

Palpitations

Heart Rate

Myocarditis

Pericarditis

Arrhythmia

Tachycardia

Bradycardia

Cardiogenic Shock

Cardiomegaly

Cardiomyopathy

Sudden cardiac death

Blood Supply to Heart

Cardiac Disorder (unspecified)

Monitoring

Treatment

## Symptom Keywords for Further Investigation

Ventricle

Atrium

Aorta

Vena cava

Valves

Tricuspid

Mitral

Aortic

brachiocephalic

pulmonary trunk

marginal artery

apex

circumflex artery

auricle

ligamentum arteriosum

subclavian

carotid

troponin

diaphoresis

Dyspnea

Dizziness

Syncope

Infarction

shortness of breath

tiredness

swelling of legs and ankles

# Chest-Pain

Select Symptom:

Show  entries Search:

Vaccine	Lower Confidence Limit of Proportional Reporting Ratio
SMALL	<u>4.235338521059725</u>
COVID19	<u>2.5470873981857127</u>

Showing 1 to 2 of 2 entries Previous 1 Next

Select Symptom:

Show  entries Search:

Vaccine	Lower Confidence Limit of Proportional Reporting Ratio
COVID19	<u>1.5637886737616593</u>

Showing 1 to 1 of 1 entries Previous 1 Next

Select Symptom:

Show  entries Search:

Vaccine	Lower Confidence Limit of Proportional Reporting Ratio
COVID19	<u>8.250467698157365</u>

Showing 1 to 1 of 1 entries Previous 1 Next

The PRR value of 8.22 indicates that Covid vaccines are associated with 8 times the incidence of cardiac discomfort compared to other vaccines.

# Angina

Angina is a symptom of coronary artery disease. Angina also is called angina pectoris. Angina is often described as squeezing, pressure, heaviness, tightness or pain in the chest. It may feel like a heavy weight lying on the chest.

Select Symptom:

Show  entries Search:

Vaccine	Lower Confidence Limit of Proportional Reporting Ratio
COVID19	<u>8.36095219407603</u>

Showing 1 to 1 of 1 entries Previous 1 Next

Unstable angina is **a condition in which your heart doesn't get enough blood flow and oxygen**. It may lead to a heart attack. Angina is a type of chest discomfort due to poor blood flow through the blood vessels in the heart called the coronary arteries. You feel a tight band of pain around your chest.

Select Symptom:

Show  entries Search:

Vaccine	Lower Confidence Limit of Proportional Reporting Ratio
COVID19-2	<u>4.355278315099127</u>
COVID19	<u>1.9378049016765797</u>

Showing 1 to 2 of 2 entries Previous 1 Next

Prinzmetal angina (vasospastic angina or variant angina) is **a known clinical condition characterized by chest discomfort or pain at rest with transient electrocardiographic changes in the ST segment, and with a prompt response to nitrates**. These symptoms occur due to abnormal coronary artery spasm.

Select Symptom:

Show  entries Search:

Vaccine	Lower Confidence Limit of Proportional Reporting Ratio
COVID19	<u>1.6203643711669442</u>

Showing 1 to 1 of 1 entries Previous 1 Next

# Palpitations

Heart palpitations (pal-pih-TAY-shuns) are **feelings of having a fast-beating, fluttering or pounding heart**. Stress, exercise, medication or, rarely, a medical condition can trigger them.

Select Symptom: Palpitations

Show 10 entries

Search:

Vaccine Lower Confidence Limit of Proportional Reporting Ratio

COVID19

[3.415382981310719](#)

Showing 1 to 1 of 1 entries

Previous

1

Next

# Heart Rate

Select Symptom: Heart rate

Show 10 entries

Search:

Vaccine Lower Confidence Limit of Proportional Reporting Ratio

COVID19	<u>69.65443543656907</u>
---------	--------------------------

Showing 1 to 1 of 1 entries

Previous 1 Next

Select Symptom: Heart rate abnormal

Show 10 entries

Search:

Vaccine Lower Confidence Limit of Proportional Reporting Ratio

COVID19	<u>3.02600458137845</u>
---------	-------------------------

Showing 1 to 1 of 1 entries

Previous 1 Next

Select Symptom: Heart rate increased

Show 10 entries

Search:

Vaccine Lower Confidence Limit of Proportional Reporting Ratio

COVID19	<u>1.7972961773379443</u>
FLU(H1N1)	<u>1.3928055110639286</u>
FLUX(H1N1)	<u>1.340475734387791</u>
FLU3	<u>1.011043716633928</u>

Showing 1 to 4 of 4 entries

Previous 1 Next

Select Symptom: Heart rate irregular

Show 10 entries

Search:

Vaccine Lower Confidence Limit of Proportional Reporting Ratio

COVID19	<u>2.1797098883136674</u>
COVID19-2	<u>1.4428264578033931</u>

Showing 1 to 2 of 2 entries

Previous 1 Next

# Myocarditis

*Myocarditis* is inflammation of the heart muscle (myocardium). The inflammation can reduce the heart's ability to pump blood

Select Symptom:

Show  entries

Search:

Vaccine	Lower Confidence Limit of Proportional Reporting Ratio
COVID19	<u>12.41667918859488</u>
SMALL	<u>4.103481176580291</u>

Showing 1 to 2 of 2 entries

Previous 1 Next

Select Symptom:

Show  entries

Search:

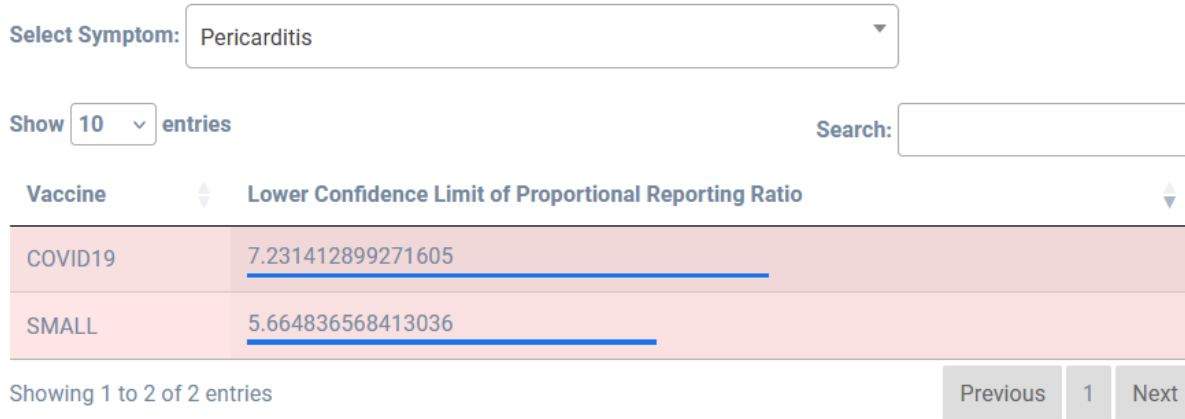
Vaccine	Lower Confidence Limit of Proportional Reporting Ratio
COVID19	<u>2.6132355453915888</u>

Showing 1 to 1 of 1 entries

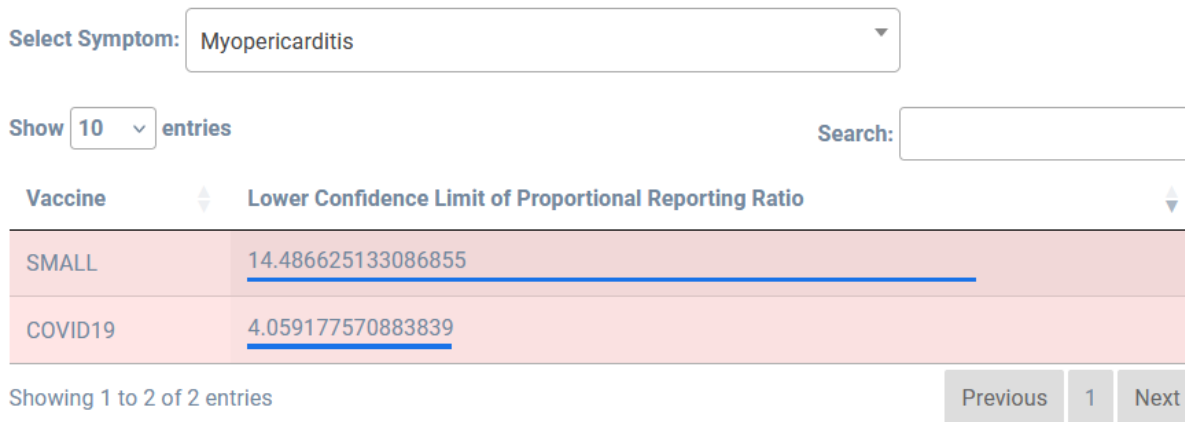
Previous 1 Next

# Pericarditis

Pericarditis is **swelling and irritation of the thin, saclike tissue surrounding the heart**. This tissue is called the pericardium. Pericarditis often causes sharp chest pain. The chest pain occurs when the irritated layers of the pericardium rub against each other.



Myopericarditis, **a complication of acute pericarditis**, is characterized by extension of pericardial inflammation to the myocardium, which can manifest as an elevated troponin level and electrocardiogram (ECG) changes (mainly ST-segment elevation). It is generally evaluated and treated as acute pericarditis.



Pericardial effusion is **the buildup of extra fluid in the space around the heart**. If too much fluid builds up, it can put pressure on the heart. This can prevent it from pumping normally. A fibrous sac called the pericardium surrounds the heart. This sac consists of two thin layers.

Select Symptom: Pericardial effusion

Show 10 entries Search:

Vaccine	Lower Confidence Limit of Proportional Reporting Ratio
COVID19	4.195046087741575
SMALL	1.960501858451218

Showing 1 to 2 of 2 entries

Previous 1 Next

**Inflammation of the pericardium secondary to any number of diseases leads to scarring and fibrosis, which eventually causes loss of elasticity of the pericardium.** This fibrosis prevents expansion of the pericardium, leading to external compression of the heart and impeded filling.

Select Symptom: Pericardial fibrosis

Show 10 entries Search:

Vaccine	Lower Confidence Limit of Proportional Reporting Ratio
COVID19	2.7959770053518733

Showing 1 to 1 of 1 entries

Previous 1 Next

Constrictive pericarditis is **a condition in which granulation tissue formation in the pericardium results in loss of pericardial elasticity leading to restriction in the ventricular filling.** It is usually a chronic condition however subacute, transient and occult variants have been described.

Select Symptom: Pericarditis constrictive

Show 10 entries Search:

Vaccine	Lower Confidence Limit of Proportional Reporting Ratio
COVID19	1.79642162199532

Showing 1 to 1 of 1 entries

Previous 1 Next

With pleural effusion or “water on the lungs,” a build-up of excess fluid in the pleura can prevent normal breathing and cause shortness of breath. Pericardial effusion affects the functioning of the heart and can lead to heart failure. Effusions can be caused by inflammation or infection.

Select Symptom:

Show  entries Search:

Vaccine

COVID19	<a href="#">2.371676828548208</a>
---------	-----------------------------------

Showing 1 to 1 of 1 entries Previous 1 Next

Pericarditis is inflammation of the pericardium. The symptoms of pericarditis are similar to those of a heart attack and can include chest pain, palpitations, and shortness of breath.. **The most common cause of pericarditis is a viral or bacterial infection.**

Select Symptom:

Show  entries Search:

Vaccine

COVID19	<a href="#">2.0206635301574987</a>
---------	------------------------------------

Showing 1 to 1 of 1 entries Previous 1 Next

Pericardial diseases can present clinically as **acute pericarditis, pericardial effusion, cardiac tamponade, and constrictive pericarditis.** Patients can subsequently develop chronic or recurrent pericarditis.

Select Symptom:

Show  entries Search:

Vaccine

SMALL	<a href="#">324.58576669190046</a>
-------	------------------------------------

Showing 1 to 1 of 1 entries Previous 1 Next

Cardiac tamponade is **a medical emergency that takes place when abnormal amounts of fluid accumulate in the pericardial sac compressing the heart and leading to a decrease in cardiac output and shock.**

Select Symptom: Cardiac tamponade

Show 10 entries

Search:

Vaccine	Lower Confidence Limit of Proportional Reporting Ratio
COVID19	<u>2.373979100075778</u>

Showing 1 to 1 of 1 entries

Previous 1 Next

# Arrhythmia

An arrhythmia, or irregular heartbeat, is a **problem with the rate or rhythm of your heartbeat**. Your heart may beat too quickly, too slowly, or with an irregular rhythm. It is normal for your heart rate to speed up during physical activity and to slow down while resting or sleeping.

Select Symptom:

Show  entries Search:

Vaccine	Lower Confidence Limit of Proportional Reporting Ratio
COVID19	<u>8.701686357711582</u>

Showing 1 to 1 of 1 entries Previous 1 Next

Supraventricular tachycardia (SVT) is a **type of irregular heartbeat, also called an arrhythmia**. It's a very fast or erratic heartbeat that affects the heart's upper chambers. SVT also is called paroxysmal supraventricular tachycardia.

Select Symptom:

Show  entries Search:

Vaccine	Lower Confidence Limit of Proportional Reporting Ratio
COVID19	<u>1.5812831358731236</u>

Showing 1 to 1 of 1 entries Previous 1 Next

Sinus arrhythmia is a **variation of normal sinus rhythm that characteristically presents with an irregular rate in which the change in the R-R interval is greater than 0.12 seconds**. Additionally, the P waves are typically monoform and in a pattern consistent with atrial activation originating from the sinus node.

Select Symptom:

Show  entries Search:

Vaccine	Lower Confidence Limit of Proportional Reporting Ratio
COVID19	<u>2.190963679194544</u>
HPV4	<u>1.2974252754667472</u>

Showing 1 to 2 of 2 entries Previous 1 Next

Tachyarrhythmias are abnormal heart rhythms with a ventricular rate of 100 or more beats per minute. These rhythms are classified as either narrow or wide-complex tachycardia with further subdivision into regular or irregular rhythm. Patients are frequently symptomatic presenting with [palpitations](#), [diaphoresis](#), dyspnea, [chest pain](#), [dizziness](#), and syncope. [Sudden cardiac death](#) may occur with certain arrhythmias.

Select Symptom: Tachyarrhythmia

Show 10 entries Search:

Vaccine	Lower Confidence Limit of Proportional Reporting Ratio
COVID19	<a href="#">2.913836322348949</a>

Showing 1 to 1 of 1 entries Previous 1 Next

Ventricular arrhythmias are **abnormal heartbeats that originate in your lower heart chambers, called ventricles**. These types of arrhythmias cause your heart to beat too fast, which prevents oxygen-rich blood from circulating to the brain and body and may result in cardiac arrest.

Select Symptom: Ventricular arrhythmia

Show 10 entries Search:

Vaccine	Lower Confidence Limit of Proportional Reporting Ratio
COVID19	<a href="#">1.9166118935268948</a>

Showing 1 to 1 of 1 entries Previous 1 Next

During atrial fibrillation, **the heart's upper chambers — called the atria — beat chaotically and irregularly**. They beat out of sync with the lower heart chambers, called the ventricles. For many people, AFib may have no symptoms. But AFib may cause a fast, pounding heartbeat, shortness of breath or light-headedness.

Select Symptom: Cardiac fibrillation

Show 10 entries Search:

Vaccine	Lower Confidence Limit of Proportional Reporting Ratio
COVID19	<a href="#">3.6589694383219182</a>

Showing 1 to 1 of 1 entries Previous 1 Next

Atrial flutter is **a type of heart rhythm disorder in which the heart's upper chambers (atria) beat too quickly**. In atrial flutter, the heart's upper chambers (atria) beat too quickly. This causes the heart to beat in a fast, but usually regular, rhythm.

Select Symptom: Cardiac flutter

Show 10 entries

Search:

Vaccine	Lower Confidence Limit of Proportional Reporting Ratio
COVID19	<u>6.320840761171555</u>

Showing 1 to 1 of 1 entries

Previous 1 Next

Cardioversion is a procedure used to return an abnormal heartbeat to a normal rhythm. This procedure is used when the heart is beating very fast or irregular. This is called an arrhythmia. Arrhythmias can cause problems such as fainting, stroke, heart attack, and even sudden cardiac death.

Select Symptom: Cardioversion

Show 10 entries

Search:

Vaccine	Lower Confidence Limit of Proportional Reporting Ratio
COVID19-2	<u>3.4140193093715245</u>
COVID19	<u>1.7401158345057095</u>

Showing 1 to 2 of 2 entries

Previous 1 Next

# Tachycardia

Tachycardia is an **increased heart rate for any reason**. If a fast heart rate is caused by exercise or stress, it's called sinus tachycardia. Sinus tachycardia is a symptom, not a condition. Most heart conditions can lead to different forms of tachycardia. Irregular heart rhythms, called arrhythmias, are one cause

Select Symptom: Tachycardia

Show 10 entries Search:

Vaccine	Lower Confidence Limit of Proportional Reporting Ratio
COVID19	<u>2.813020860858787</u>

Showing 1 to 1 of 1 entries Previous 1 Next

Atrial tachycardia (AT) is **a type of abnormal heart rhythm, or arrhythmia**. It occurs when the electrical signal that controls the heartbeat starts from an unusual location in the upper chambers (atria) and rapidly repeats, causing the atria to beat too quickly

Select Symptom: Atrial tachycardia

Show 10 entries Search:

Vaccine	Lower Confidence Limit of Proportional Reporting Ratio
COVID19	<u>1.9668350965342427</u>

Showing 1 to 1 of 1 entries Previous 1 Next

Postural tachycardia syndrome (PoTS) is **when your heart rate increases very quickly after getting up from sitting or lying down**. It can get better with changes to your lifestyle, but some people may need treatment with medicines. It's also known as postural orthostatic tachycardia syndrome.

Select Symptom: Postural orthostatic tachycardia syndrome

Show 10 entries Search:

Vaccine	Lower Confidence Limit of Proportional Reporting Ratio
HPV4	<u>25.963005898960123</u>
HPVX	<u>19.27400635730591</u>
HPV2	<u>11.368042206258854</u>
HPV9	<u>8.659601429305221</u>

Showing 1 to 4 of 4 entries Previous 1 Next

Sinus tachycardia is **a regular cardiac rhythm in which the heart beats faster than normal**. While it is common to have tachycardia as a physiological response to exercise or stress, it causes concern when it occurs at rest.

Select Symptom: Sinus tachycardia

Show 10 entries

Search:

Vaccine Lower Confidence Limit of Proportional Reporting Ratio

COVID19	2.453239305558922
---------	-------------------

Showing 1 to 1 of 1 entries

Previous 1 Next

Supraventricular tachycardia (SVT) is **a type of irregular heartbeat, also called an arrhythmia**. It's a very fast or erratic heartbeat that affects the heart's upper chambers. SVT also is called paroxysmal supraventricular tachycardia.

Select Symptom: Supraventricular tachycardia

Show 10 entries

Search:

Vaccine Lower Confidence Limit of Proportional Reporting Ratio

COVID19	2.098255449589012
COVID19-2	1.089770661241253

Showing 1 to 2 of 2 entries

Previous 1 Next

Select Symptom: Tachycardia paroxysmal

Show 10 entries

Search:

Vaccine Lower Confidence Limit of Proportional Reporting Ratio

COVID19	1.3098538588041695
---------	--------------------

Showing 1 to 1 of 1 entries

Previous 1 Next

Select Symptom: Ventricular tachycardia

Show 10 entries

Search:

Vaccine Lower Confidence Limit of Proportional Reporting Ratio

COVID19	2.4239837172883445
---------	--------------------

Showing 1 to 1 of 1 entries

Previous 1 Next

# Bradycardia

Bradycardia is a **slower than normal heart rate**. A normal adult resting heart rate is between 60 – 100 beats per minute (bpm). If you have bradycardia, your heart beats fewer than 60 times a minute. Bradycardia (heart rate 40 – 60 bpm) can be normal when you're sleeping

Select Symptom:

Show  entries

Search:

Vaccine	Lower Confidence Limit of Proportional Reporting Ratio
HPV2	<a href="#">3.3838705956949444</a>
PNC	<a href="#">3.1643101865219307</a>
HEPAB	<a href="#">1.3786125914957454</a>
HPV9	<a href="#">1.2584452624564944</a>
HEP	<a href="#">1.2415435381205513</a>
COVID19	<a href="#">1.2094843981771737</a>
HEPA	<a href="#">1.1333459954098468</a>
RAB	<a href="#">1.072427201820022</a>

Showing 1 to 8 of 8 entries

# Cardiogenic Shock

Cardiogenic shock, also known as cardiac shock, **happens when your heart cannot pump enough blood and oxygen to the brain and other vital organs**. This is a life-threatening emergency. It is treatable if diagnosed right away, so it's important to know the warning signs

Select Symptom:

Show  entries Search:

Vaccine	Lower Confidence Limit of Proportional Reporting Ratio
COVID19	2.6986553420695096
COVID19-2	1.4029270502871252

Showing 1 to 2 of 2 entries Previous 1 Next

Cardiac insufficiency, more commonly known as heart failure, is when the heart muscle's pump function is reduced. This leads to the heart being unable to produce the power to pump the required amount of blood throughout the body.

Select Symptom:

Show  entries Search:

Vaccine	Lower Confidence Limit of Proportional Reporting Ratio
COVID19	2.0203181238043277

Showing 1 to 1 of 1 entries Previous 1 Next

# Cardiomegaly

An enlarged heart (cardiomegaly) isn't a disease, but rather a sign of another condition. The term "cardiomegaly" refers to **an enlarged heart seen on any imaging test, including a chest X-ray**. Other tests are then needed to diagnose the condition that's causing the enlarged heart.

Select Symptom:

Show  entries

Search:

Vaccine	Lower Confidence Limit of Proportional Reporting Ratio
COVID19	2.205474514058312
COVID19-2	1.2610412456351334

Showing 1 to 2 of 2 entries

Previous 1 Next

# Cardiomyopathy

**Any disorder that affects the heart muscle** is called a cardiomyopathy. Cardiomyopathy causes the heart to lose its ability to pump blood well. In some cases, the heart rhythm also becomes disturbed. This leads to arrhythmias (irregular heartbeats)

Select Symptom:

Show  entries Search:

Vaccine	Lower Confidence Limit of Proportional Reporting Ratio
SMALL	<a href="#">6.138464810604156</a>
COVID19	<a href="#">1.200547316373382</a>
HEP	<a href="#">1.0143399710343763</a>

Showing 1 to 3 of 3 entries Previous 1 Next

**Congestive cardiomyopathy is a clinical state in which an abnormality of ventricular myocardium results in impaired pump function and circulatory congestion.**

Select Symptom:

Show  entries Search:

Vaccine	Lower Confidence Limit of Proportional Reporting Ratio
COVID19	<a href="#">3.1201280228673505</a>

Showing 1 to 1 of 1 entries Previous 1 Next

**Hypertrophic cardiomyopathy (HCM) is a disease in which the heart muscle becomes thickened, also called hypertrophied.** The thickened heart muscle can make it harder for the heart to pump blood. Many people with hypertrophic cardiomyopathy don't realize they have it. That's because they have few, if any, symptoms.

Select Symptom:

Show  entries Search:

Vaccine	Lower Confidence Limit of Proportional Reporting Ratio
COVID19	<a href="#">1.6601575501397137</a>

Showing 1 to 1 of 1 entries Previous 1 Next

Select Symptom: Cardiac hypertrophy

Show 10 entries Search:

Vaccine Lower Confidence Limit of Proportional Reporting Ratio

COVID19	<u>1.9842953163766788</u>
---------	---------------------------

Showing 1 to 1 of 1 entries Previous 1 Next

Ischemic cardiomyopathy (ICM) is a term that refers to **the heart's decreased ability to pump blood properly, due to myocardial damage brought upon by ischemia**. When discussing the term ICM, coronary artery disease (CAD) has to be addressed.

Select Symptom: Ischaemic cardiomyopathy

Show 10 entries Search:

Vaccine Lower Confidence Limit of Proportional Reporting Ratio

COVID19	<u>2.411122273194437</u>
---------	--------------------------

Showing 1 to 1 of 1 entries Previous 1 Next

Stress cardiomyopathy is **a condition caused by intense emotional or physical stress leading to rapid and severe reversible cardiac dysfunction**. It mimics myocardial infarction with changes in the electrocardiogram and echocardiogram, but without any obstructive coronary artery disease.

Select Symptom: Stress cardiomyopathy

Show 10 entries Search:

Vaccine Lower Confidence Limit of Proportional Reporting Ratio

COVID19	<u>2.7573256054302178</u>
---------	---------------------------

Showing 1 to 1 of 1 entries Previous 1 Next

# Sudden Death

Select Symptom: Sudden death

Show 10 entries Search:

Vaccine	Lower Confidence Limit of Proportional Reporting Ratio
COVID19	<u>2.656078996602845</u>
FLUX	<u>1.0028558604712936</u>

Showing 1 to 2 of 2 entries Previous 1 Next

Sudden cardiac death (SCD) is **death due to a cardiovascular cause that occurs within one hour of the onset of symptoms**. A sudden cardiac arrest occurs when the heart stops beating or is not beating sufficiently to maintain perfusion and life.

Select Symptom: Sudden cardiac death

Show 10 entries Search:

Vaccine	Lower Confidence Limit of Proportional Reporting Ratio
COVID19	<u>3.780408623199407</u>

Showing 1 to 1 of 1 entries Previous 1 Next

Select Symptom: Cardiac death

Show 10 entries Search:

Vaccine	Lower Confidence Limit of Proportional Reporting Ratio
COVID19	<u>3.010582692821686</u>

Showing 1 to 1 of 1 entries Previous 1 Next

Acute cardiac events **occur when the supply of blood through the coronary arteries to the working muscle of the heart is reduced or stopped altogether**.

Select Symptom: Acute cardiac event

Show 10 entries Search:

Vaccine	Lower Confidence Limit of Proportional Reporting Ratio
COVID19	<u>1.541167213389925</u>

Showing 1 to 1 of 1 entries Previous 1 Next

Cardiac arrest, also known as sudden cardiac arrest, is **when the heart stops beating suddenly**. The lack of blood flow to the brain and other organs can cause a person to lose consciousness, become disabled or die if not treated immediately.

Select Symptom:

Show  entries Search:

Vaccine	Lower Confidence Limit of Proportional Reporting Ratio
COVID19	<a href="#">2.0901448036399857</a>
PNC	<a href="#">1.3197350318083902</a>
FLUX	<a href="#">1.1418549015497408</a>

Showing 1 to 3 of 3 entries Previous 1 Next

Heart failure **occurs when the heart muscle doesn't pump blood as well as it should**. Blood often backs up and causes fluid to build up in the lungs and in the legs. The fluid buildup can cause shortness of breath and swelling of the legs and feet.

Select Symptom:

Show  entries Search:

Vaccine	Lower Confidence Limit of Proportional Reporting Ratio
COVID19	<a href="#">3.85961332506376</a>

Showing 1 to 1 of 1 entries Previous 1 Next

Acute heart failure is **a sudden, life-threatening condition that occurs when your heart can no longer do its job**. ADHF occurs in people with a history of heart disease. De novo heart failure is due to other medical conditions affecting the heart.

Select Symptom:

Show  entries Search:

Vaccine	Lower Confidence Limit of Proportional Reporting Ratio
COVID19	<a href="#">4.348424450970008</a>
COVID19-2	<a href="#">1.2857910558905543</a>

Showing 1 to 2 of 2 entries Previous 1 Next

The most common symptoms of chronic heart failure include **shortness of breath, tiredness, swelling of the legs and ankles, chest pain and a cough**. It most commonly affects older people and people with other heart conditions

Select Symptom: Cardiac failure chronic

Show 10 entries Search:

Vaccine	Lower Confidence Limit of Proportional Reporting Ratio
COVID19	5.196666650049322

Showing 1 to 1 of 1 entries Previous 1 Next

Congestive heart failure (CHF) is a **complex clinical syndrome characterized by inefficient myocardial performance, resulting in compromised blood supply to the body**. CHF results from any disorder that impairs ventricular filling or ejection of blood to the systemic circulation.

Select Symptom: Cardiac failure congestive

Show 10 entries Search:

Vaccine	Lower Confidence Limit of Proportional Reporting Ratio
COVID19	2.2605027567164124
COVID19-2	1.2729625723623827

Showing 1 to 2 of 2 entries Previous 1 Next

Cardiopulmonary arrest is the **cessation of adequate heart function and respiration and results in death without reversal**. Often this condition is found in patients with coronary artery disease.

Select Symptom: Cardio-respiratory arrest

Show 10 entries Search:

Vaccine	Lower Confidence Limit of Proportional Reporting Ratio
COVID19	2.659046575114361
RV1	1.6475205007250502

Showing 1 to 2 of 2 entries Previous 1 Next

# Blood Supply to Heart

Select Symptom: Cardiac valve disease

Show 10 entries

Search:

Vaccine	Lower Confidence Limit of Proportional Reporting Ratio
COVID19	1.1398496604081236

Showing 1 to 1 of 1 entries

Previous 1 Next

Select Symptom: Catheterisation cardiac

Show 10 entries

Search:

Vaccine	Lower Confidence Limit of Proportional Reporting Ratio
COVID19	4.962254548218138

Showing 1 to 1 of 1 entries

Previous 1 Next

Select Symptom: Catheterisation cardiac abnormal

Show 10 entries

Search:

Vaccine	Lower Confidence Limit of Proportional Reporting Ratio
COVID19	2.3338044723319658
COVID19-2	1.7773679722532525

Showing 1 to 2 of 2 entries

Previous 1 Next

Select Symptom: Intracardiac thrombus

Show 10 entries

Search:

Vaccine	Lower Confidence Limit of Proportional Reporting Ratio
COVID19	3.652016586860404

Showing 1 to 1 of 1 entries

Previous 1 Next

Select Symptom: Acute coronary syndrome

Show 10 entries

Search:

Vaccine Lower Confidence Limit of Proportional Reporting Ratio

COVID19	<u>5.396326876411185</u>
---------	--------------------------

Showing 1 to 1 of 1 entries

Previous 1 Next

Select Symptom: Arteriogram coronary abnormal

Show 10 entries

Search:

Vaccine Lower Confidence Limit of Proportional Reporting Ratio

COVID19	<u>1.4427112530665551</u>
---------	---------------------------

Showing 1 to 1 of 1 entries

Previous 1 Next

Select Symptom: Arteriosclerosis coronary artery

Show 10 entries

Search:

Vaccine Lower Confidence Limit of Proportional Reporting Ratio

COVID19	<u>3.636486980924445</u>
---------	--------------------------

Showing 1 to 1 of 1 entries

Previous 1 Next

Select Symptom: Arteriospasm coronary

Show 10 entries

Search:

Vaccine Lower Confidence Limit of Proportional Reporting Ratio

COVID19	<u>1.7857626032404033</u>
---------	---------------------------

Showing 1 to 1 of 1 entries

Previous 1 Next

Select Symptom: Computerised tomogram coronary artery

Show 10 entries

Search:

Vaccine Lower Confidence Limit of Proportional Reporting Ratio

COVID19	<u>6.800084730488878</u>
---------	--------------------------

Showing 1 to 1 of 1 entries

Previous 1 Next

Select Symptom:

Show  entries

Search:

Vaccine	Lower Confidence Limit of Proportional Reporting Ratio
COVID19	<u>1.4275378653730657</u>

Showing 1 to 1 of 1 entries

Previous 1 Next

Select Symptom:

Show  entries

Search:

Vaccine	Lower Confidence Limit of Proportional Reporting Ratio
COVID19-2	<u>2.1259839247068624</u>
COVID19	<u>2.087971525638766</u>

Showing 1 to 2 of 2 entries

Previous 1 Next

Select Symptom:

Show  entries

Search:

Vaccine	Lower Confidence Limit of Proportional Reporting Ratio
COVID19	<u>1.3565144310044814</u>

Showing 1 to 1 of 1 entries

Previous 1 Next

Select Symptom:

Show  entries

Search:

Vaccine	Lower Confidence Limit of Proportional Reporting Ratio
SMALL	<u>4.715111062560227</u>
COVID19	<u>1.936432984812285</u>

Showing 1 to 2 of 2 entries

Previous 1 Next

Select Symptom:

Show  entries

Search:

Vaccine	Lower Confidence Limit of Proportional Reporting Ratio
COVID19	<u>1.8680867246553328</u>

Showing 1 to 1 of 1 entries

Previous 1 Next

Select Symptom:

Show  entries

Search:

Vaccine

COVID19	<a href="#">3.144595889127771</a>
---------	-----------------------------------

Showing 1 to 1 of 1 entries

[Previous](#) [1](#) [Next](#)

Select Symptom:

Show  entries

Search:

Vaccine

COVID19	<a href="#">3.297568919566692</a>
---------	-----------------------------------

Showing 1 to 1 of 1 entries

[Previous](#) [1](#) [Next](#)

Select Symptom:

Show  entries

Search:

Vaccine

COVID19	<a href="#">3.9397850030929433</a>
---------	------------------------------------

Showing 1 to 1 of 1 entries

[Previous](#) [1](#) [Next](#)

# Cardiac Disorder (unspecified)

Select Symptom: Cardiac disorder

Show 10 entries

Search:

Vaccine	Lower Confidence Limit of Proportional Reporting Ratio
COVID19	<u>2.354438730509465</u>
COVID19-2	<u>1.0032571459966044</u>

Showing 1 to 2 of 2 entries

Previous 1 Next

Select Symptom: Cardiac dysfunction

Show 10 entries

Search:

Vaccine	Lower Confidence Limit of Proportional Reporting Ratio
COVID19	<u>2.9164938518205874</u>

Showing 1 to 1 of 1 entries

Previous 1 Next

Select Symptom: Cardiovascular disorder

Show 10 entries

Search:

Vaccine	Lower Confidence Limit of Proportional Reporting Ratio
HEPAB	<u>4.736909623667302</u>
COVID19	<u>1.7495046027880323</u>
HEP	<u>1.4496791414523262</u>

Showing 1 to 3 of 3 entries

Previous 1 Next

Select Symptom: Cardiovascular symptom

Show 10 entries

Search:

Vaccine	Lower Confidence Limit of Proportional Reporting Ratio
COVID19	<u>1.7532018619895764</u>

Showing 1 to 1 of 1 entries

Previous 1 Next

Select Symptom:

Show  entries

Search:

Vaccine	Lower Confidence Limit of Proportional Reporting Ratio
COVID19	<u>2.7125657363064435</u>

Showing 1 to 1 of 1 entries

[Previous](#) [1](#) [Next](#)

# Monitoring

There is an excessive incidence of tests and monitoring for cardiac disorder following Covid 19 vaccine administration. Such tests are expensive and time consuming. Excessive testing and monitoring suggests excessive heart disorders.

Select Symptom:

Show  entries Search:

Vaccine	Lower Confidence Limit of Proportional Reporting Ratio
COVID19	<u>33.403408009904105</u>

Showing 1 to 1 of 1 entries Previous 1 Next

Select Symptom:

Show  entries Search:

Vaccine	Lower Confidence Limit of Proportional Reporting Ratio
COVID19	<u>3.346874017899016</u>

Showing 1 to 1 of 1 entries Previous 1 Next

Select Symptom:

Show  entries Search:

Vaccine	Lower Confidence Limit of Proportional Reporting Ratio
COVID19	<u>8.159075016064316</u>
SMALL	<u>1.359983612785313</u>

Showing 1 to 2 of 2 entries Previous 1 Next

Select Symptom: Echocardiogram abnormal

Show 10 entries

Search:

Vaccine	Lower Confidence Limit of Proportional Reporting Ratio
SMALL	<u>8.776171860343469</u>
COVID19-2	<u>3.6802767212267713</u>
COVID19	<u>1.337426739773214</u>
FLUX	<u>1.140258888879904</u>
UNK	<u>1.096322486807216</u>

Showing 1 to 5 of 5 entries

Previous 1 Next

Select Symptom: Stress echocardiogram

Show 10 entries

Search:

Vaccine	Lower Confidence Limit of Proportional Reporting Ratio
COVID19	<u>2.644714932562529</u>

Showing 1 to 1 of 1 entries

Previous 1 Next

Select Symptom: Electrocardiogram

Show 10 entries

Search:

Vaccine	Lower Confidence Limit of Proportional Reporting Ratio
COVID19	<u>5.896070395129483</u>

Showing 1 to 1 of 1 entries

Previous 1 Next

Select Symptom: Electrocardiogram PR segment depression

Show 10 entries

Search:

Vaccine	Lower Confidence Limit of Proportional Reporting Ratio
COVID19	<u>2.411122273194437</u>

Showing 1 to 1 of 1 entries

Previous 1 Next

Select Symptom:

Show  entries

Search:

Vaccine

COVID19	<u>2.543026309340605</u>
---------	--------------------------

Showing 1 to 1 of 1 entries

[Previous](#) [1](#) [Next](#)

Select Symptom:

Show  entries

Search:

Vaccine

COVID19	<u>1.9377592314939704</u>
---------	---------------------------

Showing 1 to 1 of 1 entries

[Previous](#) [1](#) [Next](#)

Select Symptom:

Show  entries

Search:

Vaccine

HPV4	<u>2.0206494077224835</u>
------	---------------------------

Showing 1 to 1 of 1 entries

[Previous](#) [1](#) [Next](#)

Select Symptom:

Show  entries

Search:

Vaccine

COVID19	<u>9.700676893338583</u>
---------	--------------------------

Showing 1 to 1 of 1 entries

[Previous](#) [1](#) [Next](#)

Select Symptom:

Show  entries

Search:

Vaccine

COVID19	<u>1.8941472349623183</u>
---------	---------------------------

Showing 1 to 1 of 1 entries

[Previous](#) [1](#) [Next](#)

Select Symptom:

Show  entries

Search:

Vaccine

COVID19	<u>1.8832209488222256</u>
---------	---------------------------

Showing 1 to 1 of 1 entries Previous 1 Next

Select Symptom:

Show  entries

Search:

Vaccine

SMALL	<u>13.711683595080874</u>
COVID19	<u>3.189970472526084</u>
UNK	<u>1.39123067340719</u>

Showing 1 to 3 of 3 entries Previous 1 Next

Select Symptom:

Show  entries

Search:

Vaccine

COVID19	<u>1.5865585271989695</u>
---------	---------------------------

Showing 1 to 1 of 1 entries Previous 1 Next

Select Symptom:

Show  entries

Search:

Vaccine

COVID19	<u>1.5169121620811985</u>
---------	---------------------------

Showing 1 to 1 of 1 entries Previous 1 Next

Select Symptom:

Show  entries

Search:

Vaccine

COVID19	<u>2.549593718323424</u>
---------	--------------------------

Showing 1 to 1 of 1 entries Previous 1 Next

Select Symptom:

Show  entries

Search:

Vaccine	Lower Confidence Limit of Proportional Reporting Ratio
SMALL	<u>14.292087438281689</u>
COVID19-2	<u>3.127851127909855</u>
COVID19	<u>1.2940944293486776</u>
HEPAB	<u>1.0564811103858611</u>

Showing 1 to 4 of 4 entries

[Previous](#) [1](#) [Next](#)

Select Symptom:

Show  entries

Search:

Vaccine	Lower Confidence Limit of Proportional Reporting Ratio
COVID19	<u>5.829253088216895</u>

Showing 1 to 1 of 1 entries

[Previous](#) [1](#) [Next](#)

Select Symptom:

Show  entries

Search:

Vaccine	Lower Confidence Limit of Proportional Reporting Ratio
COVID19-2	<u>2.5461787889893897</u>
HPV4	<u>1.2120298828503122</u>
COVID19	<u>1.1560879220132332</u>

Showing 1 to 3 of 3 entries

[Previous](#) [1](#) [Next](#)

Select Symptom:

Show  entries

Search:

Vaccine	Lower Confidence Limit of Proportional Reporting Ratio
COVID19	<u>2.263319552318824</u>

Showing 1 to 1 of 1 entries

[Previous](#) [1](#) [Next](#)

Select Symptom: Exercise electrocardiogram

Show 10 entries

Search:

Vaccine Lower Confidence Limit of Proportional Reporting Ratio

COVID19	<u>3.443310148832584</u>
---------	--------------------------

Showing 1 to 1 of 1 entries

Previous 1 Next

Select Symptom: Angiocardiogram

Show 10 entries

Search:

Vaccine Lower Confidence Limit of Proportional Reporting Ratio

COVID19	<u>23.258975973622142</u>
---------	---------------------------

Showing 1 to 1 of 1 entries

Previous 1 Next

Select Symptom: Cardiac electrophysiologic study

Show 10 entries

Search:

Vaccine Lower Confidence Limit of Proportional Reporting Ratio

COVID19	<u>2.62667505214229</u>
---------	-------------------------

Showing 1 to 1 of 1 entries

Previous 1 Next

Select Symptom: Cardiac imaging procedure abnormal

Show 10 entries

Search:

Vaccine Lower Confidence Limit of Proportional Reporting Ratio

COVID19	<u>2.2788122170285967</u>
---------	---------------------------

Showing 1 to 1 of 1 entries

Previous 1 Next

Select Symptom: Cardiac monitoring

Show 10 entries

Search:

Vaccine	Lower Confidence Limit of Proportional Reporting Ratio
COVID19-2	<u>2.320616000976736</u>
COVID19	<u>2.243648394092224</u>

Showing 1 to 2 of 2 entries Previous 1 Next

Select Symptom: Cardiac monitoring abnormal

Show 10 entries

Search:

Vaccine	Lower Confidence Limit of Proportional Reporting Ratio
COVID19-2	<u>5.401690193532668</u>
COVID19	<u>1.6606892293161997</u>

Showing 1 to 2 of 2 entries Previous 1 Next

Select Symptom: Cardiac stress test

Show 10 entries

Search:

Vaccine	Lower Confidence Limit of Proportional Reporting Ratio
COVID19	<u>3.945641736211422</u>

Showing 1 to 1 of 1 entries Previous 1 Next

Select Symptom: Cardiac stress test abnormal

Show 10 entries

Search:

Vaccine	Lower Confidence Limit of Proportional Reporting Ratio
COVID19-2	<u>4.610863701591154</u>
COVID19	<u>1.3675860555518793</u>

Showing 1 to 2 of 2 entries Previous 1 Next

Select Symptom: Cardiac telemetry

Show 10 entries

Search:

Vaccine	Lower Confidence Limit of Proportional Reporting Ratio
COVID19	<u>4.586031384965754</u>
COVID19-2	<u>1.239044865797081</u>

Showing 1 to 2 of 2 entries

Previous 1 Next

Select Symptom: Cardiac telemetry abnormal

Show 10 entries

Search:

Vaccine	Lower Confidence Limit of Proportional Reporting Ratio
COVID19-2	<u>7.112294258893366</u>

Showing 1 to 1 of 1 entries

Previous 1 Next

Select Symptom: Cardiovascular evaluation

Show 10 entries

Search:

Vaccine	Lower Confidence Limit of Proportional Reporting Ratio
COVID19	<u>1.4460612052820876</u>
HPV4	<u>1.3622641643899414</u>

Showing 1 to 2 of 2 entries

Previous 1 Next

Select Symptom: Cardiovascular examination

Show 10 entries

Search:

Vaccine	Lower Confidence Limit of Proportional Reporting Ratio
COVID19	<u>8.509845802897685</u>

Showing 1 to 1 of 1 entries

Previous 1 Next

Select Symptom:

Show  entries

Search:

Vaccine	Lower Confidence Limit of Proportional Reporting Ratio
COVID19	<u>5.754987126212737</u>

Showing 1 to 1 of 1 entries

[Previous](#) [1](#) [Next](#)

# Treatments

There is an excessive incidence of treatments for heart disorders

Select Symptom: Cardiac pacemaker insertion

Show 10 entries

Search:

Vaccine	Lower Confidence Limit of Proportional Reporting Ratio
COVID19-2	2.5985230951665037
COVID19	1.2138412164450525

Showing 1 to 2 of 2 entries

Previous 1 Next

Select Symptom: Cardiac resynchronisation therapy

Show 10 entries

Search:

Vaccine	Lower Confidence Limit of Proportional Reporting Ratio
COVID19	1.2922717025744033

Showing 1 to 1 of 1 entries

Previous 1 Next

Select Symptom: Cardiac ablation

Show 10 entries

Search:

Vaccine	Lower Confidence Limit of Proportional Reporting Ratio
COVID19-2	2.375193672370951
COVID19	1.821436089355235

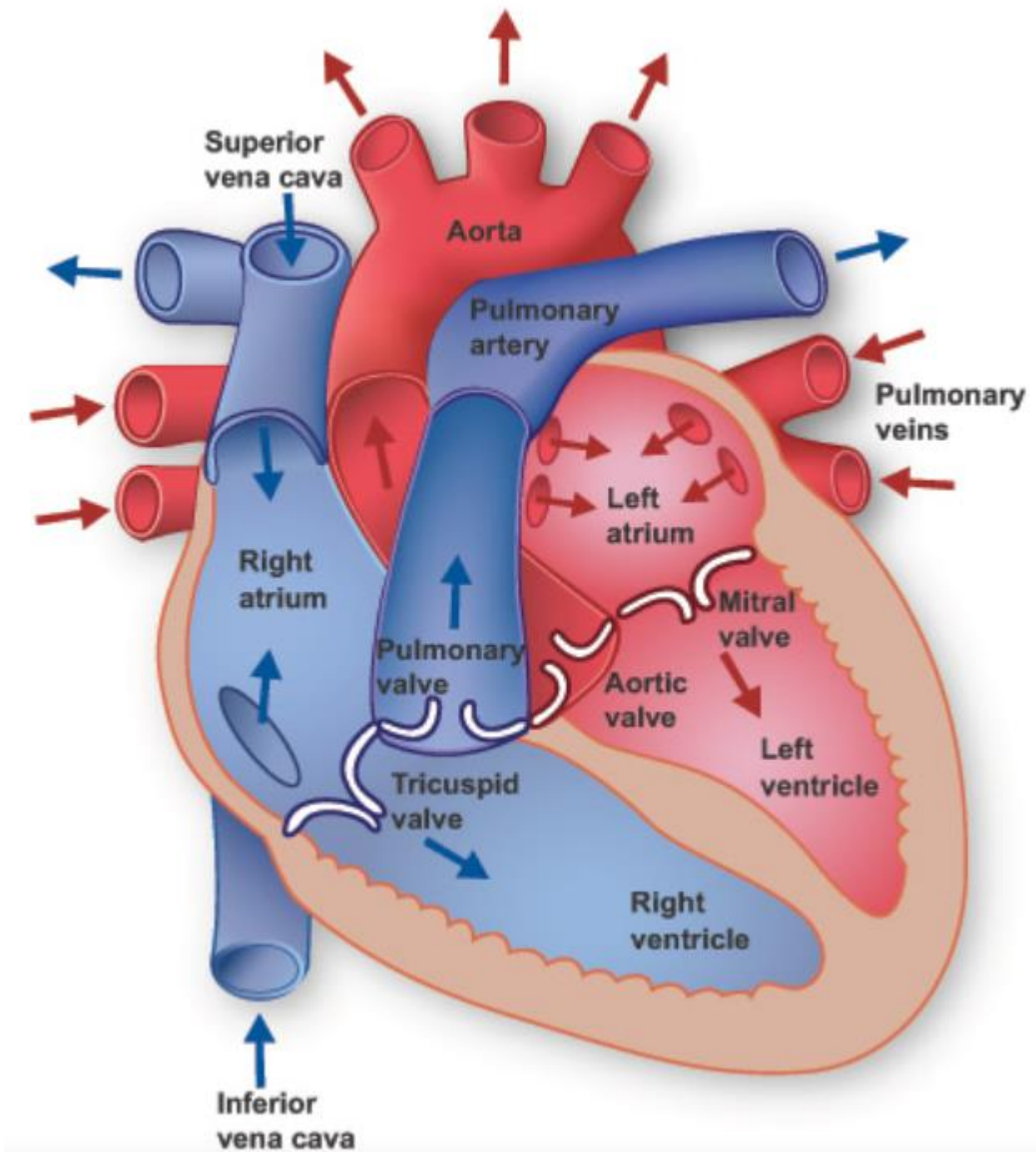
Showing 1 to 2 of 2 entries

Previous 1 Next

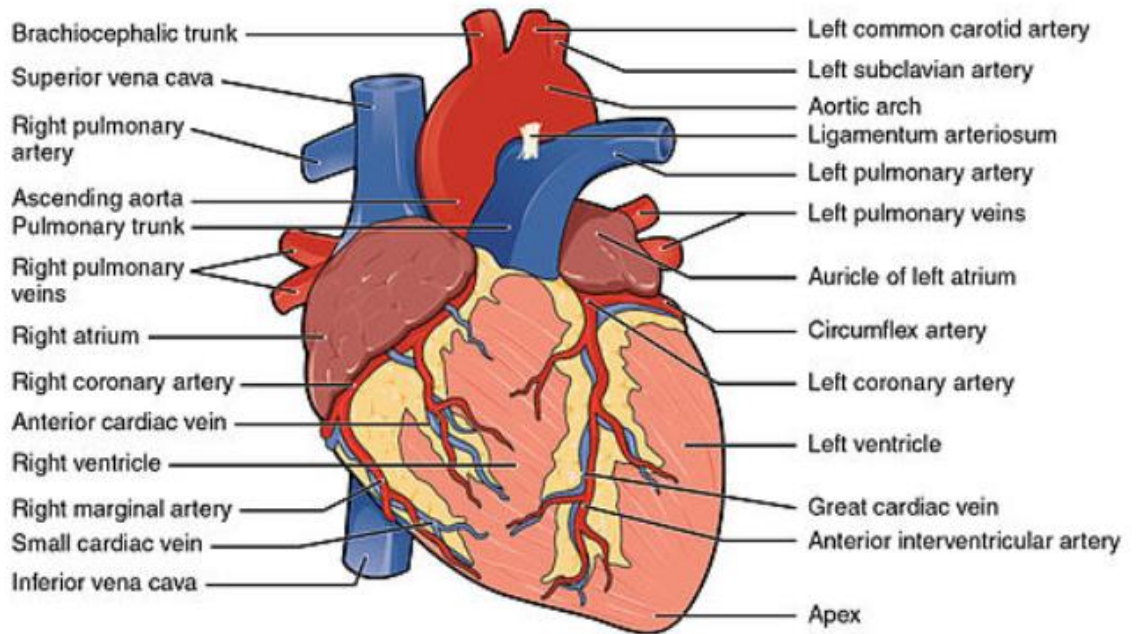
Here ends this current draft.

The following appendix outlines further safety signals for investigation.

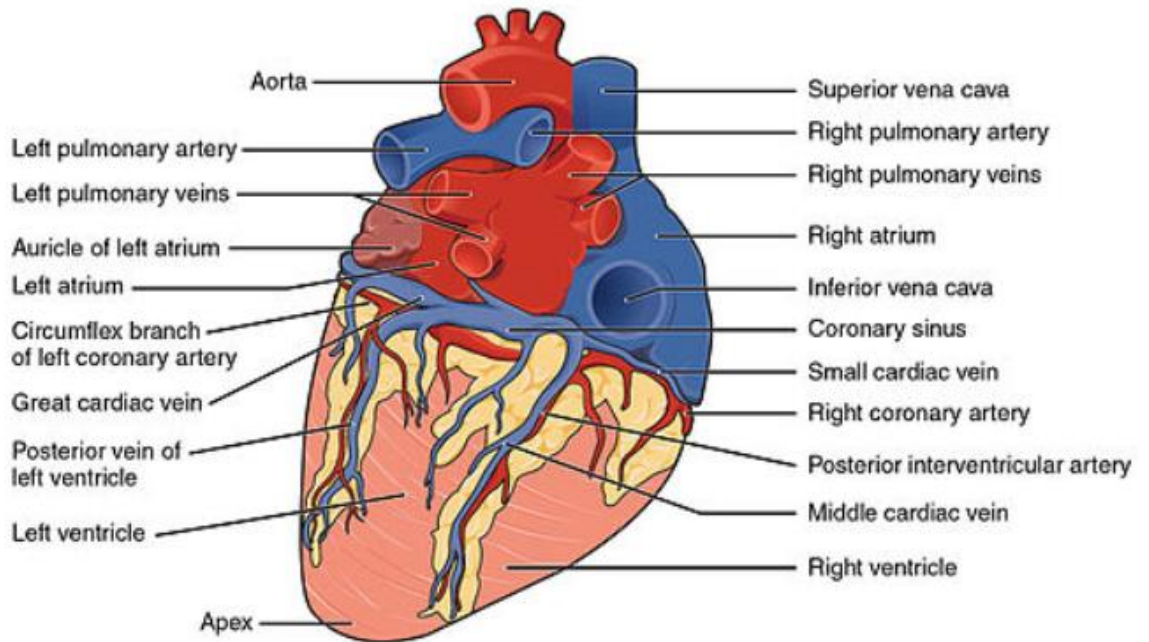
Appendix : further symptom keywords for investigation



**Anterior view**



**Posterior view**



# Ventricular

Select Symptom: Heart valve incompetence

Show 10 entries

Search:

Vaccine Lower Confidence Limit of Proportional Reporting Ratio

COVID19 3.357386050367476

Showing 1 to 1 of 1 entries

Previous 1 Next

Select Symptom: Chronic left ventricular failure

Show 10 entries

Search:

Vaccine Lower Confidence Limit of Proportional Reporting Ratio

COVID19 3.209278762275761

Showing 1 to 1 of 1 entries

Previous 1 Next

Select Symptom: Defect conduction intraventricular

Show 10 entries

Search:

Vaccine Lower Confidence Limit of Proportional Reporting Ratio

COVID19 1.2922717025744033

Showing 1 to 1 of 1 entries

Previous 1 Next

Select Symptom: Intraventricular haemorrhage

Show 10 entries

Search:

Vaccine Lower Confidence Limit of Proportional Reporting Ratio

COVID19 1.641291866565053

Showing 1 to 1 of 1 entries

Previous 1 Next

Select Symptom: Left ventricular dilatation

Show 10 entries

Search:

Vaccine Lower Confidence Limit of Proportional Reporting Ratio

COVID19 2.617664371263453

Showing 1 to 1 of 1 entries

Previous 1 Next

Select Symptom:

Show  entries

Search:

Vaccine	Lower Confidence Limit of Proportional Reporting Ratio
COVID19	<u>3.3369309967034795</u>

Showing 1 to 1 of 1 entries

[Previous](#) [1](#) [Next](#)

Select Symptom:

Show  entries

Search:

Vaccine	Lower Confidence Limit of Proportional Reporting Ratio
COVID19	<u>4.789099434951265</u>
COVID19-2	<u>1.3423317345817192</u>

Showing 1 to 2 of 2 entries

[Previous](#) [1](#) [Next](#)

Select Symptom:

Show  entries

Search:

Vaccine	Lower Confidence Limit of Proportional Reporting Ratio
COVID19	<u>3.572062022004398</u>

Showing 1 to 1 of 1 entries

[Previous](#) [1](#) [Next](#)

Select Symptom:

Show  entries

Search:

Vaccine	Lower Confidence Limit of Proportional Reporting Ratio
COVID19	<u>1.9491502612553455</u>

Showing 1 to 1 of 1 entries

[Previous](#) [1](#) [Next](#)

Select Symptom: Right ventricular dysfunction

Show 10 entries

Search:

Vaccine	Lower Confidence Limit of Proportional Reporting Ratio
COVID19-2	3.9528436470345047
COVID19	1.4221499273408311

Showing 1 to 2 of 2 entries

Previous 1 Next

Select Symptom: Right ventricular enlargement

Show 10 entries

Search:

Vaccine	Lower Confidence Limit of Proportional Reporting Ratio
COVID19	1.740393032704219

Showing 1 to 1 of 1 entries

Previous 1 Next

Select Symptom: Right ventricular failure

Show 10 entries

Search:

Vaccine	Lower Confidence Limit of Proportional Reporting Ratio
FLUX	3.451803558939448
FLU3	1.4933341540379224

Showing 1 to 2 of 2 entries

Previous 1 Next

Select Symptom: Right ventricular hypertrophy

Show 10 entries

Search:

Vaccine	Lower Confidence Limit of Proportional Reporting Ratio
COVID19	1.3482731806747097

Showing 1 to 1 of 1 entries

Previous 1 Next

Select Symptom:

Show  entries

Search:

Vaccine	Lower Confidence Limit of Proportional Reporting Ratio
COVID19	<u>2.6224911158002566</u>
COVID19-2	<u>1.435946829787581</u>

Showing 1 to 2 of 2 entries

[Previous](#) [1](#) [Next](#)

Select Symptom:

Show  entries

Search:

Vaccine	Lower Confidence Limit of Proportional Reporting Ratio
COVID19	<u>2.5206855581198706</u>

Showing 1 to 1 of 1 entries

[Previous](#) [1](#) [Next](#)

Select Symptom:

Show  entries

Search:

Vaccine	Lower Confidence Limit of Proportional Reporting Ratio
COVID19	<u>2.685475121375032</u>
COVID19-2	<u>1.6149877018765044</u>

Showing 1 to 2 of 2 entries

[Previous](#) [1](#) [Next](#)

Select Symptom:

Show  entries

Search:

Vaccine	Lower Confidence Limit of Proportional Reporting Ratio
COVID19	<u>2.132579901360728</u>

Showing 1 to 1 of 1 entries

[Previous](#) [1](#) [Next](#)

Select Symptom:

Show  entries

Search:

Vaccine

COVID19	<u>2.5686534387499163</u>
---------	---------------------------

Showing 1 to 1 of 1 entries

[Previous](#) [1](#) [Next](#)

Select Symptom:

Show  entries

Search:

Vaccine

COVID19	<u>1.6212618048018392</u>
---------	---------------------------

Showing 1 to 1 of 1 entries

[Previous](#) [1](#) [Next](#)

Select Symptom:

Show  entries

Search:

Vaccine

COVID19	<u>3.581375890521398</u>
---------	--------------------------

Showing 1 to 1 of 1 entries

[Previous](#) [1](#) [Next](#)

Select Symptom:

Show  entries

Search:

Vaccine

COVID19	<u>2.197351297833261</u>
---------	--------------------------

Showing 1 to 1 of 1 entries

[Previous](#) [1](#) [Next](#)

Select Symptom:

Show  entries

Search:

Vaccine

COVID19	<u>1.5473428545931842</u>
---------	---------------------------

Showing 1 to 1 of 1 entries

[Previous](#) [1](#) [Next](#)