

What's NEW in Vericut 9.6.2.2

March 3, 2026

Dear Vericut® User:

Thank you for your continued investment in Vericut, an important part of your NC programming and machining process!

We're excited to introduce Vericut 9.6.2.2 with faster performance, an enhanced interface, and the upgrades of the Vericut AI Platforms, Vericut Assistant (VA) and Vericut Intelligence (VI).

To learn more about the Vericut AI platform, including the Vericut Intelligence (VI), please visit: [Vericut.com](https://vericut.com) and [Press Release](#)

This release is packed with enhancements designed to boost performance, increase productivity, and unlock new levels of efficiency.

Maintenance and Licensing Information

NOTE: This software requires Vericut 9.6 licensing

To Get a License – use the link below to submit a License Request:

<https://vericut.com/support/request-license>

Licensing is sent via email only.

Software maintenance keeps you on the cutting edge - CGTech provides update software to customers with current software maintenance. Your continued maintenance ensures that you have the most advanced verification technology available. If your maintenance has expired, please contact your CGTech representative (<https://vericut.com/company/contact-us>).

Sincerely,

Ely Wahbeh

Vericut Product Manager

V9.6.2.2 Release

Enhancements and Changes in V9.6.2.2

Verification

Export CAD Model can now set model tolerances more easily for Batch mode.

Teams notifications have been updated to use new brand icon.

G-Code Processing

ljk2AnglesPickSolution macro option 16 added to help with TRAORI picked solutions.

CycleSubroutineSuspend added to Siemens library controls to help with cycle processing.

CycleMillPocketRefPlaneDelta, **CycleMillPocketDepthSigned**, and **CycleMillPocketSafeDistanceSigned** macros added to help with cycle processing.

Frames logic has been improved.

Tool Manager

An issue of referenced tool not deleting from Multi Tool Station has been corrected.

Interfaces

3DEXPERIENCE

Support added for 3DX 2026.

VDAF

Pick Design Location and Pick Simulation Location features added to VDAF's MDI window.

Mirror locations feature has been added to VDAF Programming.

A Visible/Hidden setting was added to Fastener Programming.

VDAF now supports Fanuc robot language.

Problems Resolved in V9.6.2.2

Verification

An issue of inconsistent AUTO-DIFF results has been corrected.

An issue of false “profile tool cannot cross itself” errors generating has been corrected.

An issue of false collision warning generating when probing due to control point set to corner radius has been corrected.

Issues of unexpected slow tool library loading has been corrected.

An issue of animation speed causing AUTO-DIFF errors has been corrected.

An issue of unexpected cutting behavior happening when Gage Point is set to 0 has been corrected.

Issues with materials removed through turning not being processed correctly have been resolved.

An issue with welcome screen border sizing has been corrected.

An issue of unexpected termination during save of Reviewer file has been corrected.

Machine Simulation

An issue of not reading the correct Cutter Compensation override ID due to regional settings has been corrected.

G-Code Processing

An issue of **MoveCutStockCompName** macro not moving stock/design elements as intended due to parent/child component relationships has been corrected.

An issue of flute length not being interpreted properly has been corrected.

An issue of a tool control point generating the incorrect behavior has been resolved.

An issue of **DynamicToolTip** not working with tilted inserts has been corrected.

Optimization

An issue of Force generating incorrect feedrate values in the Stock Material Record has been corrected.

An issue of Force sometimes not optimizing a second setup has been corrected.

Tool Manager

Issues of unsuccessful copying of holders between certain tool types have been corrected.

An issue of custom views vanishing when using Search Tool has been corrected.

An issue of positional values sometimes not functioning as desired with multi tool stations has been corrected.

Reported SOR profile errors have been corrected.

An issue of Select Cutting Surface not functioning as desired has been corrected.

An issue of unexpected termination due to holder for cutter defined in Multi tool station has been corrected.

An issue of incorrect "Tool Library not found" errors generating has been resolved.

An issue of Cutter Comp entries not coming through when referencing tools has been corrected.

Interfaces

CATV6

An issue of tool profiles not importing properly has been corrected.

MasterCAM

- An issue of incorrect tool diameter output has been resolved.
- An issue of MCAMV not exporting corner rounding tools correctly has been resolved.

Tool Manager Partners

- Issues with importing some TDM Global Line tools has been corrected.
- An issue of probes not importing properly from Zoller has been corrected.

Reports

An issue of Cycle Time displaying inaccurately has been corrected.

An issue of Tool ID displaying inaccurately has been corrected.

Reviewer

An issue of failure to launch Reviewer Standalone has been resolved.

VDAF

Certain component properties not exporting to VDAF properly has been corrected.

An issue of models disappearing during simulation has been corrected.

An issue of unexpected termination when selecting waypoint approach/retract has been corrected.

New Macros in V9.6.2.2

CutterCompInterferenceAtStartWarning

CutterCompRampoffSkipLast

CutterCompRamponSkipFirst

CutterCompShortCorner

CycleMillPocketRefPlaneDelta

CycleMillPocketDepthSigned

CycleMillPocketSafeDistanceSigned

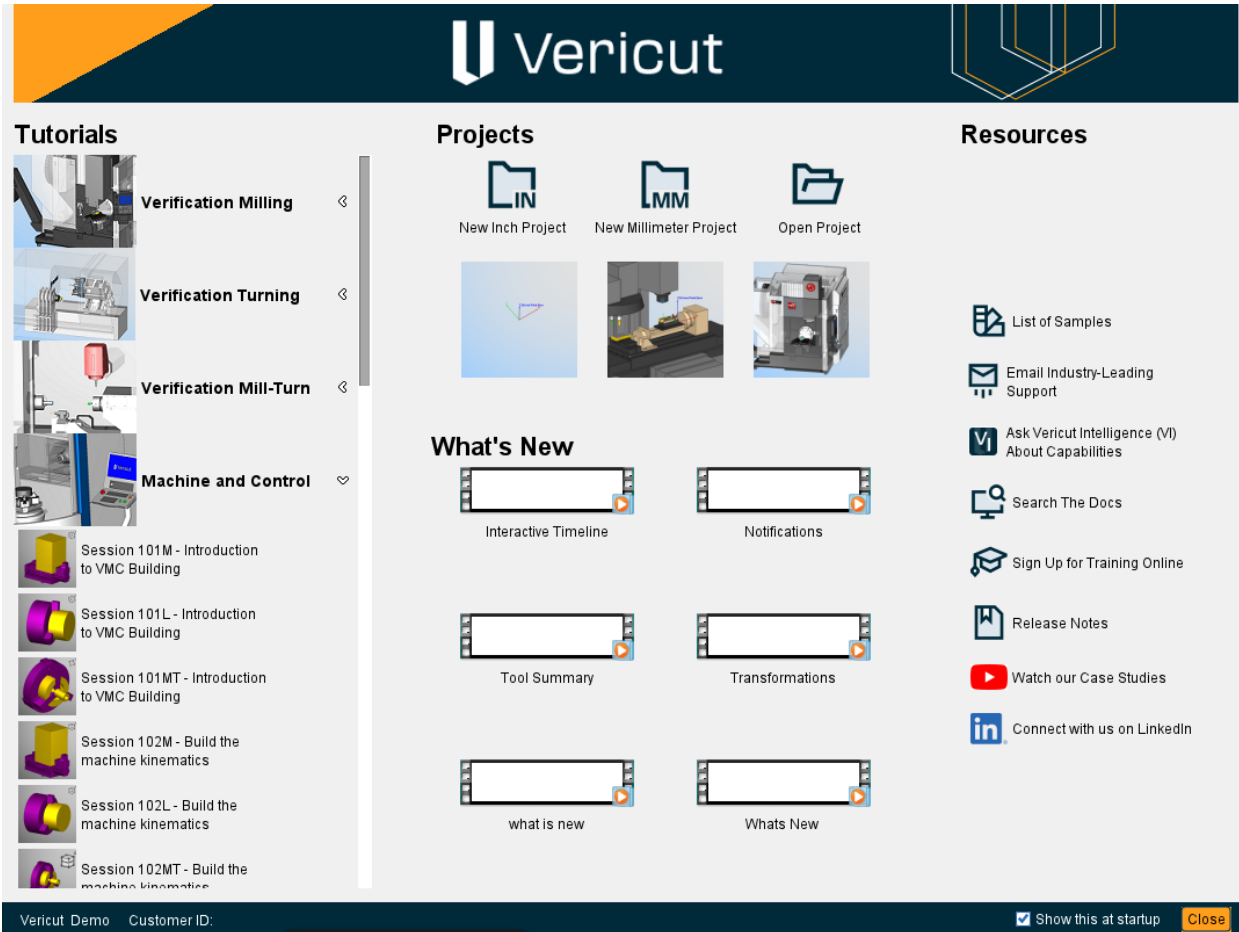
SiemensTOROTAdjustModes

V9.6.2 Release

Enhancements and Changes in V9.6.2

Welcome Screen

The Vericut Welcome Screen has been completely redesigned with a new interface, information flow, and updated graphics.



Tool Manager

Multi tool stations now work with Broach mode.

G-Code Processing

FanucCrossChannelVariableOnOff macro added to transfer variables between channels and add more support capability to Fanuc Robot TP language.

SiemensInterpolationLogic macro added to support logic used for Siemens Polar and Cylindrical Interpolation.

AutosetToolManLengthOSPVars macro added to automatically transfer gage point data from Tool Manager to certain array variables for Okuma control

DeleteCutStock macro added to delete a specified cut stock when called.

ConversionFinishLoopCount macro added to save global variables after rewind is performed.

Machine Simulation

A variable has been added to define number of decimal places used for better accuracy when calculating angles in CYCLE998.

Optimization

CSV files can now be saved in multiple languages.

Interfaces

PROEV

- Support added for Insert Edge Angles on turning tools.
- PROEV can now transfer tools without the cutting portion.
- Cylinder probes can now be transferred.

Zoller

- Zoller now works with HTTPS protocol.
- Zoller TMS Database URL HTTPS Not Supported.

X-Caliper

X-Caliper can now measure near cylinders as if they are full cylinders.

Reports

Multiple driven points for a single tool now display on a single line.

Reviewer

Installer now creates associations for .vcreview file extension.

Problems Resolved in V9.6.2

Verification

Issues of unexpected termination have been corrected.

An issue of STEP files not being read correctly has been resolved.

An issue of NC Program Step Back icon not displaying been corrected.

An issue of wrong tool direction warning not generating under certain situations has been corrected.

An issue of Cutcom Sketch files not resetting when prompted has been corrected.

An issue of Interpolate Rotary Motion not working properly with Circular Interpolation has been corrected.

Issues of File Summary not removing referenced toolpaths has been corrected.

An issue of Save CAS File not working as desired has been corrected.

An issue of copy/paste feature not functioning in Project Tree has been corrected.

An issue of APT simulation not parsing special characters has been corrected.

An issue of Status panel not updating when certain IP files are loaded has been corrected.

An issue of Tool Summary times not matching has been corrected.

An issue of unexpected slowdown has been corrected.

Machine Simulation

An issue of collision displaying incorrectly when tool and spindle are active has been resolved.

An issue of incorrect spindle direction being applied has been resolved.

An issue of tapping cycle slowdown has been corrected.

An issue of design model not moving with cut stock under certain conditions has been corrected.

An issue of part not transferring from main to subspindle has been corrected.

An issue of remove material function not working when break points are present in G-Code has been corrected.

An issue of incorrect collisions generating has been corrected.

An issue of cutting limits not being read properly has been corrected.

G-Code Processing

An issue of Tool Descriptions disappearing from Variables panel has been corrected.

An issue of Merge IP Files failing with locked machine and control files has been corrected.

Optimization

An issue of Learn from NC Program misapplying the Force Limit Ignore option has been corrected.

An issue of Batch Mode not working with Optimization Learn Mode has been resolved.

An issue of Mouse Followers not aligning properly in Graphs has been corrected.

Issues of values on Graphs panel not being consistent with other panels and windows have been corrected.

An issue of Optimization controls not working with turrets has been corrected.

An issue of Force outputting excessive cleanup values has been corrected.

Tool Manager

An issue of .tls files not being read correctly has been resolved.

Issues of tool name and value reverting on reload have been corrected.

An issue of insert being immovable has been corrected.

An issue of referenced Holder not aligning properly has been corrected.

An issue of turn tools defining incorrectly when paired with STL cutters has been resolved.

An issue of change cutter model feature not working as desired has been corrected.

An issue of referenced tools disappearing from turrets has been corrected.

An issue of stock material records doubling when .tls file is saved has been corrected.

An issue of .tls values generating erroneous position values has been corrected.

An issue of tool component generating incorrectly has been resolved.

An issue related to selecting cutting face creating an incorrect definition has been resolved.

Issues of Tool Manager deleting certain model files during save has been corrected.

An issue of tool header changing between versions has been corrected.

An issue of CoroPlus Tool not importing taps correctly has been resolved.

Release Notes

Issues of Tool Manager experiencing unexpected termination or slowdown have been corrected.

An issue of Driven Point not working as desired has been corrected.

Issues of insert thickness not working with Sweep Profiles have been corrected.

An issue of Search Tool not working as desired has been corrected.

An issue of Driven Point Zero not working as desired has been corrected.

An issue of incorrect tool representation has been resolved.

An issue of incorrect tool geometry has been resolved.

An issue of referenced tools vanishing has been corrected.

Interfaces

EdgeCAM

- An issue of ECV files not exporting correctly has been resolved.

GibbsCAM

- Issues of taps not defining correctly has been resolved.
- An issue of stock models generating in incorrect locations and orientations has been resolved.

MasterCAM

- Issues of MCAMV not exporting certain tools properly have been corrected.
- An issue of stock loading in incorrect location has been corrected.

NXV

- An issue of NXV transferring incorrect Driven Point IDs has been resolved.
- An issue of NXV not exporting to correct attach point has been resolved.
- An issue of NXV not outputting quadrant cutter correctly has been resolved.

PROEV

- An issue of Creo interface window not displaying entire name of certain functions has been corrected.
- An issue of cutters disappearing has been corrected.
- An issue of incorrect insert generating has been resolved.
- An issue of PROEV not setting correct probe length has been resolved.

Zoller

- An issue of turning tools incorrectly importing as mill tools has been resolved.

X-Caliper

An issue of Annotate Tool not creating diameter dimensions has been corrected.

Reports

An issue of Report Table rows disappearing during PDF creation has been corrected.

An issue of cutter diameter being misreported has been corrected.

An issue of machine metrics table not generating has been corrected.

An issue of Start / End of Process Image not working as expected has been corrected.

Probing

An issue of Probing not working correctly on thread part has been resolved.

Reviewer

An issue of Toolpath Trace not working as desired has been corrected.

An issue of slowdown when saving under certain conditions has been corrected.

Documentation

Several undocumented macros have been added to the Vericut Macros section of the Vericut Help.

New Macros in 9.6.2

AutosetToolManLengthOSPVars
BeckhoffForLoop
CaseBreak
CaseElse2
CaseValues2
ClampPressure
ConversionFinishLoopCount
DeleteCutStock
FanucCrossChannelVariableOnOff
IfBlockIfCheck2
SiemensInterpolationLogic
SiemensPAROTToolsideIgnore
TextVariableConcat2
WTapeEIOOnPartScrap

Vericut 9.6.1 Release

Enhancements and Changes in V9.6.1

Verification

New Stop At: Sync option has been added to simulation playback.

G-Code Processing

New **FeedPerMinuteType** macro value option added to calculate feed rates more accurately.

New **SiemensORISOL2SpindleOrient** macro added to support Siemens ORISOL when spindle is not at zero.

New **BeckhoffCondLeftBracket** conditional created to better control branching.

New **SiemensInterpolationLogic** macro created to help with engraving motions.

Tool Manager

Tool description fields now expand to display longer descriptions.

An issue of CAS file not exporting ply holders has been corrected.

An issue of Tool Manager not saving “Do Not Spin with Spindle” settings has been corrected.

An issue of EndMill tool not referencing the correct profile has been resolved.

An issue of Auto Driven Point not working as desired has been corrected.

Issues of Auto Gage not working as desired have been corrected.

An issue of changing stickout length not applying to selected holder has been corrected.

Interfaces

GibbsCAM

- GibbsCAM interface has new filtering options.

Reports

A Report File Name field has been added in Die Sinking Simulation dialog to customize where Die Sinking Simulations are saved for Reports.

Added option for Die Sinking Report to output in batch mode.

Problems Resolved in V9.6.1

Verification

An issue of STL insert displaying erroneous non-cutting portion collision has been corrected.

An issue of tool rack components preventing tool rotation has been corrected.

Issues of unexpected termination and slowdown have been corrected.

An issue of false collision reports generating in certain circumstances has been corrected.

An issue of components not renaming when desired has been corrected.

An issue of multi tool assemblies disappearing when saving a file summary has been corrected.

An issue of multiple Extra Settings windows opening simultaneously has been corrected.

An issue of Search Tool results loading incorrectly has been resolved.

An issue of View Cube not working properly has been resolved.

Machine Simulation

An issue of additive laser not displaying has been corrected.

An issue of tool holder changing orientation during save has been corrected.

Optimization

An issue of Create Stock Material Record per Tool Use not optimizing as expected when multiple setups are present has been corrected.

An issue of Reset and replace current NC program files with optimized files feature not working as desired has been corrected.

An issue of Graphs not keeping tool selection during step through playback has been corrected.

Tool Manager

An issue of Thread Insert geometry displaying incorrectly when set to millimeter units has been resolved.

Release Notes

An issue of tap tools not always being defined correctly has been resolved.

An issue of Auto Driven Point not always functioning as desired has been corrected.

An issue of revolve and sweep profiles not working with chamfers has been corrected.

An issue of Holder and Cutter components not renaming has been corrected.

An issue of some unsupported tool files not displaying the correct error loading message has been resolved.

An issue of Reference Tool not working as desired has been corrected.

An issue of Undo button deleting multi-tool attachments has been corrected.

An issue of Copy/Paste function not working with Stock Material Records has been corrected.

An issue of Driven Point taking on the Tool number rather than the assigned number has been corrected.

An issue of CAD Import not recognizing when a millimeter tool has been imported has been corrected.

Interfaces

CATV5

- An issue of CATV5 displaying version number incorrectly has been resolved.

EdgeCAM

- Support added for EdgeCAM 2025.1

Esprit TNG

- An issue of tools importing with the wrong spindle direction has been corrected.

GibbsCAM

- An issue of cutters outputting with incorrect stickout lengths has been resolved.

MCAM

- An issue of tool missing on import has been corrected.
- An issue of French translation displaying incorrectly has been resolved.
- An issue of MCAMV 2026 text fields not taking manual entry as they should has been corrected.
- An issue of MCAMV not outputting Driven Points correctly has been resolved.
- An issue of incorrect tool profiles being output has been corrected.
- An issue of MCAMV exporting holder names incorrectly has been resolved.
- An issue of Stock models being mispositioned on load has been corrected.

Release Notes

NXV

- An issue with NXV icon not displaying correctly has been resolved.
- An issue of Japanese translations for NXV not working as desired has been resolved.

PowerMILL

- An issue of CSYS not importing correctly has been resolved.

PROEV

- An issue of PROEV tool shank diameter generating incorrectly has been corrected.

Reports

An issue of reports sometimes failing to report tool changes during sub programs has been corrected.

An issue of Gage Point not showing up in generated reports has been corrected.

An issue of Reports not outputting Corner Radius has been corrected.

Reviewer

An issue of Reviewer sometimes being unable to open files with inactive setups has been corrected.

New Macros in V9.6.1

ActiveToolName

CsysComponentCheck

SetMaxCentripetalAcceleration

SiemensInterpolationLogic

SiemensOrisol2SpindleOrient

Vericut 9.6 Release Highlights

Vericut Assistant: Step-by-step Practical Guidance

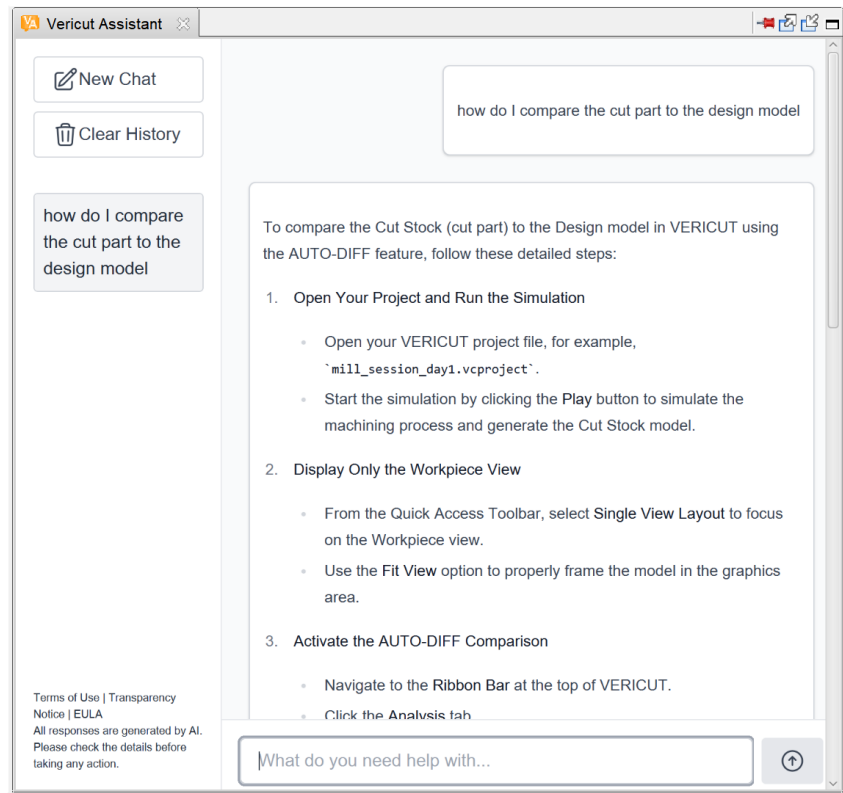
Vericut Assistant (VA) focuses on guiding users through practical applications of Vericut’s features.

VA provides clear, step-by-step instructions for tasks like:

- How do I compare the cut part to the design model?
- How do I create coordinate systems?
- How do I stop the simulation at each error?

VA will also evolve to interact directly with the software, performing actions such as “Add a tool with these criteria.”

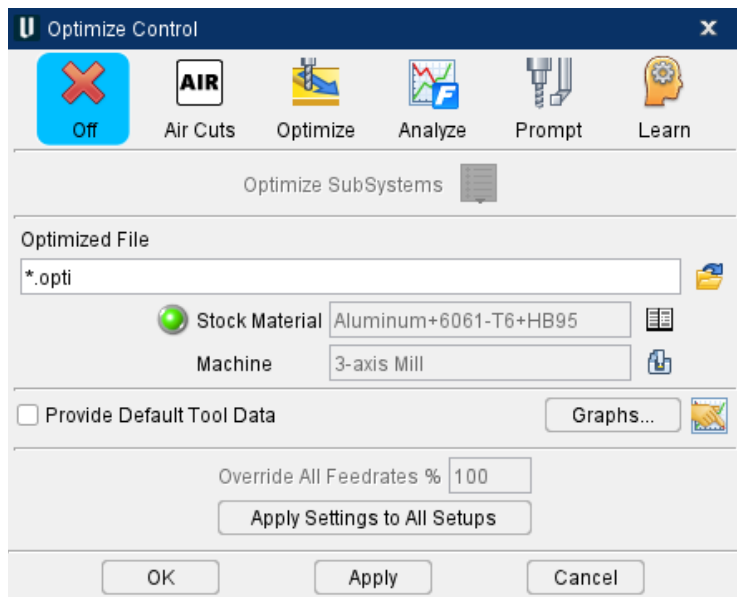
This evolution will streamline workflows and empower users with actionable insights.



Optimize Control window

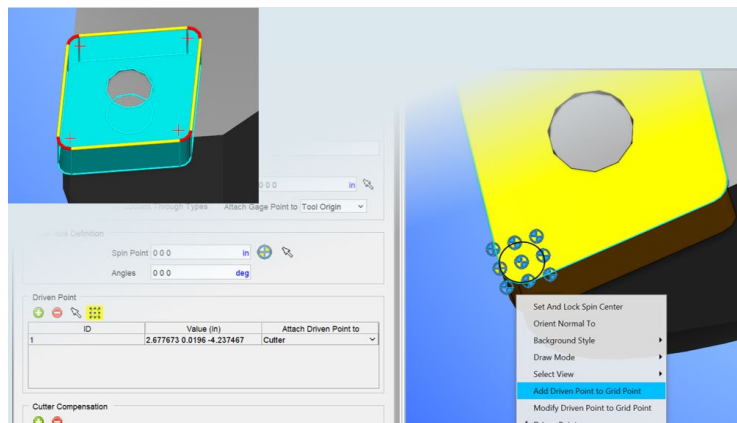
The Optimize Control window has been redesigned with a simpler, cleaner interface:

- Top level icons have replaced the old pulldown options for selecting optimization mode.
- Provide Default Tool Data and Graphs features are visible on every tab.
- Provide Default Tool is set to on by default.
- Static grouping options have replaced pulldown or expandable menu options.



Driven Points and Qualified Dimensions

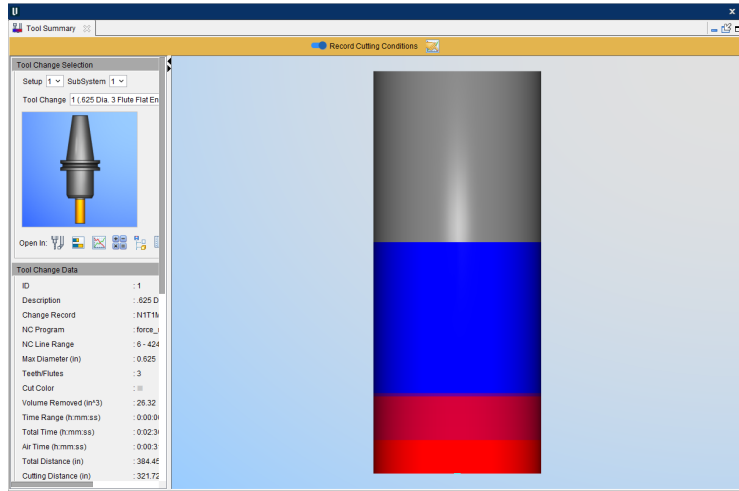
New Cutting Face display in Tool Manager shows curves and segments on imported turning inserts. New functionality to view and select desired Driven Point from interactive 3x3 point grid that also creates the Qualified Dimension. Includes new option to define Nose Radius with 3 points from Cutting Face.



Release Notes

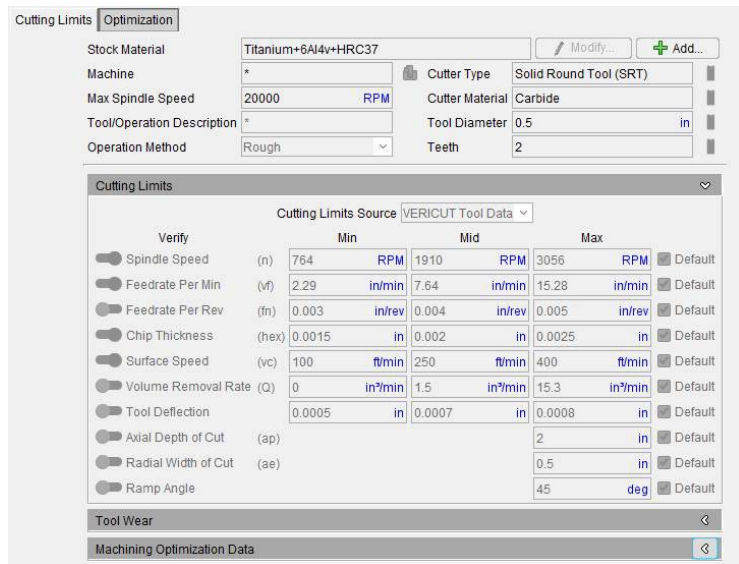
Tool Summary

The Tool Summary panel has been revamped to mimic the Graphs panel in some key ways such as presenting tool change data in the side panel.



Tool Performance Data

Tool Performance Data and Cutting Limit Data have been expanded to include a broader range of cutter types for materials.



Over 1800 more material/cutter types have been added.

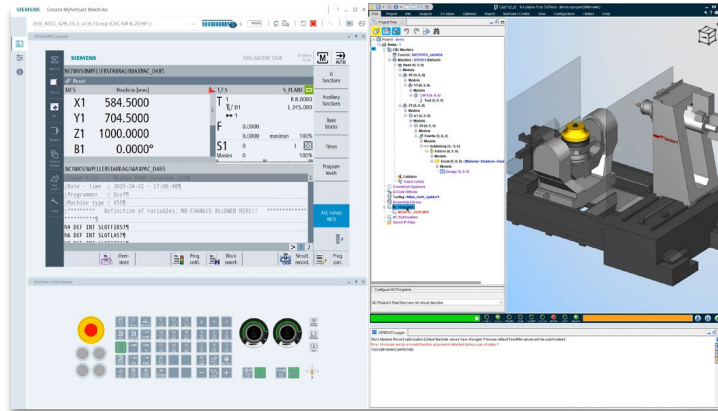
In	SRT	Micro	Rough	Carbide	Straight
mm	IDX	Reg	Finish	HSS	Serrated
		90d		Cobalt	Wave
		45d		Ceramic	
		BUT			
		HF			
		DFR			
		Ball			

Release Notes

Interfaces

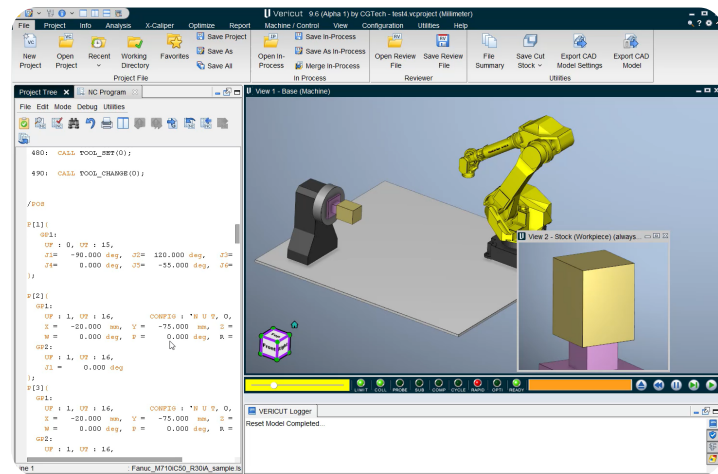
Run My Virtual Machine

Support for Siemens Run My Virtual Machine has been added. This feature reads and translates G-code and PLC commands then drives Vericut to do the material removal and collision checking.



Fanuc TP Language

Support for Fanuc robot language Teach Pendant (TP) has been added.



Release Notes

CNC Connectivity

The Machine Connectivity panel (Utilities tab > Machine Connectivity) has been enhanced in various areas:

- Allow CNC Machine Monitoring to work with partial Spindle Mapping.
- If axes are not mapped in the Configuration > Axis Mapping tab, then do not display those axes in the Precheck Initial Machine Location tab.
- If axes are not mapped in the Configuration > Axis Mapping tab, then do not display those axes in the Precheck > Work Offsets tab.
- Precheck for Tooling Offsets now only looks for tools in that .vcproject to reduce the time to run Precheck.
- Specific to Nakamura multi turret multi spindle machines, incorporated special method to calculate Tooling Offsets.

CNC Machine Connectivity

Host Port Disconnect

CNC Machines: Focas Simulator

Configuration | Precheck | Postcheck | CNC Machine Monitoring

Summary | Initial Machine Location | Work Offsets | NC Program | Tooling Offsets

Subsystem ID	Tool ID	Description	VERICUT Val...	CNC Machin...	Update
1	1	1	0 0 4.4488	0 0 4.4474	<input type="checkbox"/>
1	2	2	0 0 3.689	0 0 3.685	<input type="checkbox"/>
1	3	3	0 0 2.7461	0 0 2.7444	<input type="checkbox"/>
1	4	4	0 0 3.3252	0 0 3.128	<input checked="" type="checkbox"/>
1	5	5	0 0 4.9528	0 0 4.9346	<input type="checkbox"/>
1	6	6	0 0 4.1415	0 0 4.2209	<input type="checkbox"/>
1	7	7	0 0 4.1867	0 0 4.1673	<input type="checkbox"/>
1	11	11	0 0 2.7461	Missing	<input type="checkbox"/>
1	8	8	0 0 3.8206	0 0 3.32	<input checked="" type="checkbox"/>
1	9	9	0 0 4.6286	0 0 4.6217	<input type="checkbox"/>

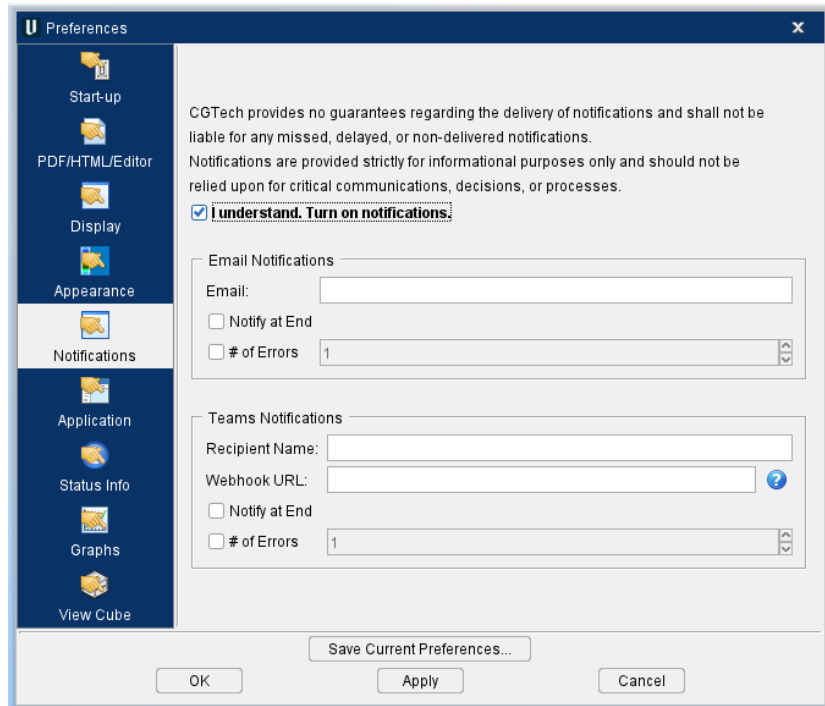
Comparing NC programs and subroutines from CNC machine to VERICUT...
CNC File Does Not Exist
--> Subsystem: *
--> File Name: C:\Users\kames\Desktop\Connectivity\connectivity_00018.sub
--> Subroutine: 0018
Comparing work offsets from CNC machine to VERICUT...
Comparing tooling offsets from CNC machine to VERICUT...

Release Notes

Preferences

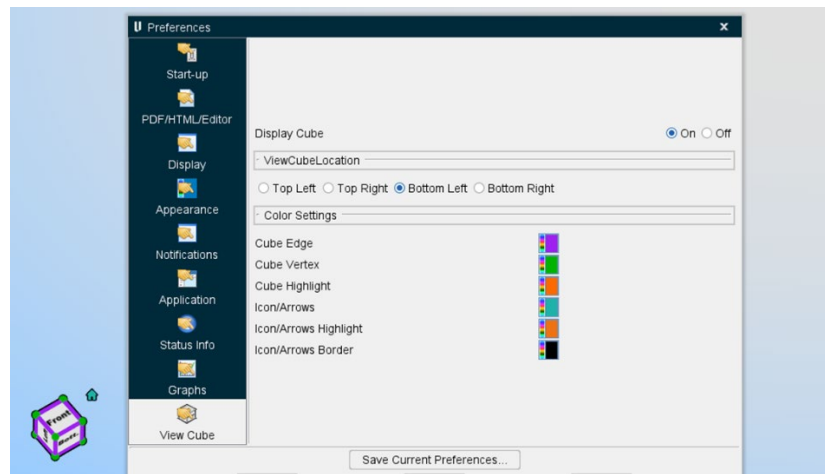
Notifications tab

The option to receive notifications can be turned on in the Preferences window. You can choose to receive notifications to Outlook and Teams as well as specifying when you want to receive these notifications and the number of errors that should be logged.



View Cube tab

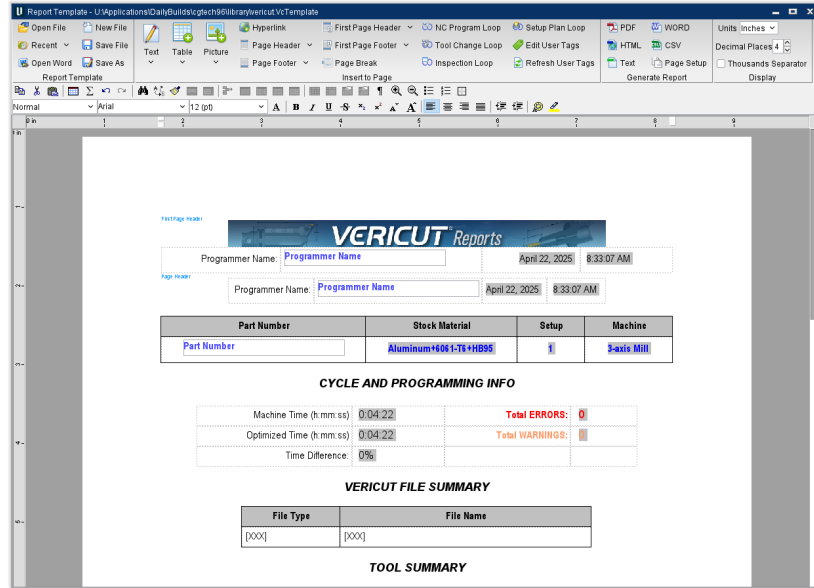
Users can now position the View Cube in any corner of the graphics area.



Release Notes

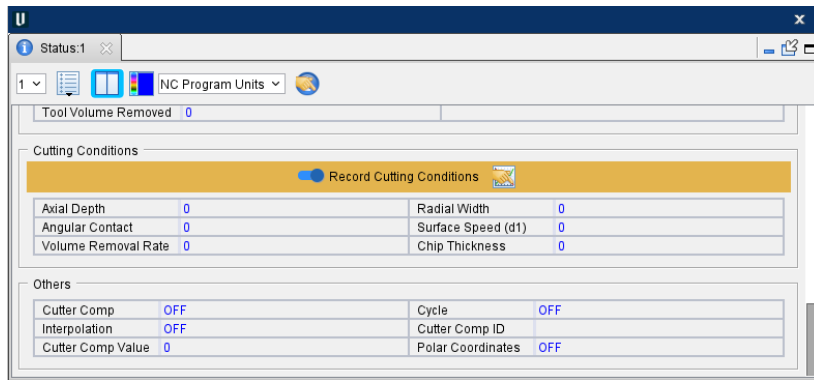
Reports

The Reports tool bar has been revamped and streamlined. The flow is now like Microsoft Word which makes it more intuitive for users and consequently it offers significantly more formatting options than before.



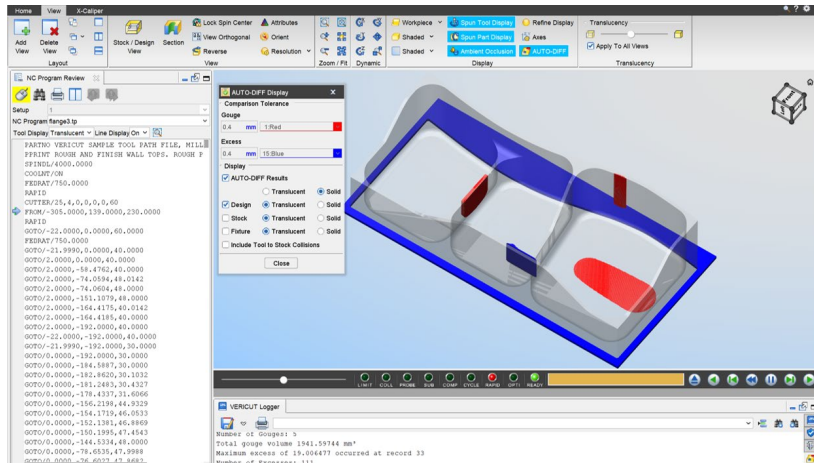
Status panel

The Cutting Conditions section of the Status panel displays more information including Axial Depth of Cut and Angular Contact.



Reviewer AUTO-DIFF

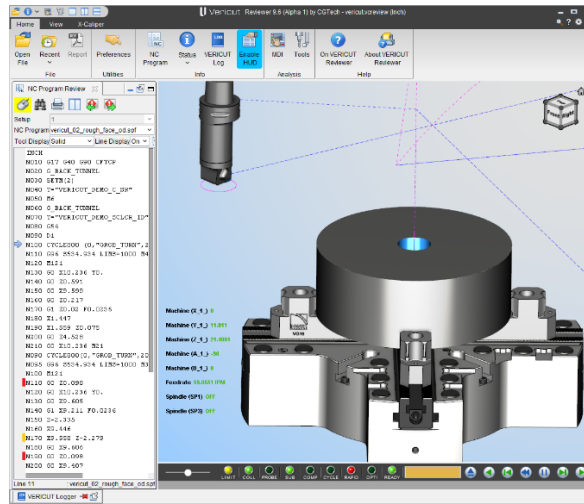
AUTO-DIFF has been added to Reviewer.



Release Notes

HUD

Heads-Up Display has been added to Reviewer. It can be accessed by Home tab > Enable HUD.



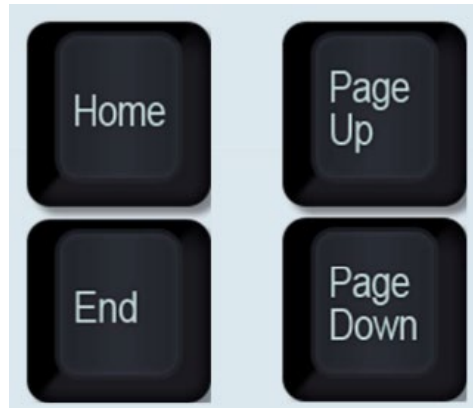
Hot Keys

Reviewer can now be controlled through hot keys. Each key is mapped to an action in Reviewer:

- UP/DOWN Arrow key: Step Forward/Back
- HOME key: Reset
- END key: Set current to the end of program
- Page UP key: Go to the beginning of current tool change
- Page DOWN key: Go to the end of current tool change

Several quick key functions to enhance the interaction:

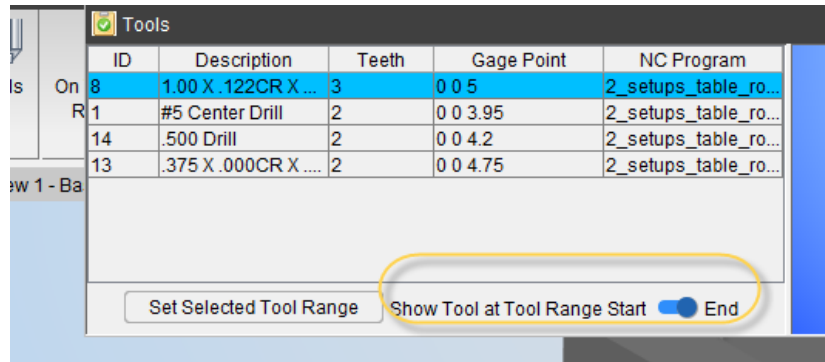
- S: Set Start at the line where the cursor is
- E: Set End at the line where the cursor is
- C: Set Current at the line where the cursor is



Release Notes

Show Tool at Tool Range Start/End

Added options to show Tool at the beginning or end of tool change range when a Tool Change Range is Set (Through Tool List Window in Reviewer) or selected (Tool combo box in Review Mode) in Reviewer Tool List window.



Enhancements and Changes in V9.6

Verification

Annotated Images identifier feature expanded to 4-digit capacity.

Users can now switch between local and online help after installation.

Inspection range now includes maximum and minimum range features.

Setting color theme to Dark Mode changes displayed text to white to maximize visibility.

Optimization

Force material check now verifies if cutter material and edge type match.

Issues of APT optimization not functioning as desired have been corrected.

Tool Manager

Added counter displays of total number of tools in Tool Manager.

Tool Manager Search Tool has "Include Current Library" feature set to off by default.

Tool Manager now generates a warning message when users attempt to read Tool Library files that were created prior to version 8.2.

Release Notes

Cut, copy, and paste functionality has been added for electrode tools.

The NOVO interface has been deprecated.

Machine Simulation

Cutter compensation now supports interpolated turning which helps with circles processing.

CAD/CAM Interfaces

3DEXPERIENCE

- 3DX now support of turning tools has been enhanced.

CATV5

- Filter for .sub and .spf files been added to CATV5.

EdgeCAM

- Support for EdgeCAM 2024 added.

GibbsCam

- Support added for exporting probe tools.

MasterCam

- MCAMV now supports mesh models.

NXV

- Support added for threadmill tool type.

PROEV

- Support added for threadmill tool type.

G-Code Processing

Support has been added for pecking motion with tapping cycles.

AutosetToolManDiameterVars macro added to generate tool diameters.

SetNCProgramVar macro added to store file paths for NC Program.

NumVarBracketOption macro added to define tables on Num control.

AdditionalWorkCoord macro enhanced to support rotation angles.

CollisionCheckingRequiredOnOff macro added to lock the simulation if machine collision detection is inactive.

Release Notes

AutosetTableAxisVarsMcdUnits macro added to switch between measurement units more easily.

Ijk2AnglesLinearAdjustOption macro enhanced to better control angular motion.

ActiveSpindleSpeedCheck macro enhanced to check spindle speed.

GageSpindleLinearOption macro enhanced to track DPZ more accurately.

X-Caliper

Tool ID has been added to the Feature/History display.

Reports

Sequential Time feature has been added to Reports to display the time of each tool change from the beginning of the simulation when selected.

Gage Length feature has been added to Reports to display output gage lengths.

Reports per Setup has introduced new report naming conventions to make the sequence of saves clearer to users.

Sample Files

Wire EDM samples have been added.

Problems Resolved in V9.6

Verification

Transform menu mistakenly generating circle center messages for intersect 3 plane measurements and vice versa has been corrected.

Issues of slowdown or unexpected termination have been corrected.

As issue of Tool Summary graphics not displaying when the panel is in overlaid mode has been corrected.

An issue of ToolCallAlpha not working as desired has been corrected.

An issue of NC Program Review mode Set Current feature not working as desired has been corrected.

An issue of Batch Mode not working as desired has been corrected.

An issue of save in process files not working as desired has been corrected.

An issue of warning incorrectly generating while Machine Collision Detection is set to Ignore has been resolved.

An issue of Volume Removal Rate in Status window not using the specified number of decimal places has been corrected.

Issues of certain IP files not opening properly have been corrected.

An issue of the Inspection window not functioning as desired has been corrected.

An issue of collision results changing depending on number of channels used has been corrected.

An issue of custom icons lingering after being removed has been corrected.

An issue of AUTO-DIFF saving image before refining it has been corrected.

An issue of animation speed slider affecting collision detection has been corrected.

An issue of certain command line options not working in Batch Wizard has been corrected.

An issue of certain tools not removing stock material correctly has been resolved.

An issue of some files opening without the filename generating has been corrected.

An issue of NC Program Review impacting error highlighting has been corrected.

An issue of revolved cutter STL models displaying the “non-cutting portion of the insert” error has been corrected.

Release Notes

An issue of CSYS position not updating when Transform menu is used in certain contexts has been corrected.

An issue of cutting results different between Profile and Machine/Cut Stock views has been corrected.

An issue of postcheck generating incorrect "Playback does not exist" warning has been resolved.

An issue of turning cycles not activating under certain conditions has been corrected.

An issue of work offsets not working in certain situations has been corrected.

An issue with electrodes not positioning and rotating as desired has been corrected.

An issue of special characters not being recognized has been corrected.

An issue of Graphs tool thumbnails not displaying correctly has been corrected.

An issue of NC Review mode not working with IP files has been corrected.

An issue of being unable to move design models in multistep programs has been corrected.

An issue of Inspection Range window slowdown has been corrected.

Optimization

Issues of Optimization generating extra F code have been corrected.

An issue of Optimize Control not working if Vericut is already in Analyze Mode has been corrected.

An issue of default optimization values generating incorrectly in Stock Material Records has been corrected.

An issue of Optimize Control generating incorrect Java error messages has been resolved.

An issue of cut distance mismatch between optimized results and Vericut Log has been corrected.

An issue of optimization modes graying out after Analyze mode is activated has been corrected.

An issue of Stock Material Records deactivating in multi-setup projects has been corrected.

An issue of clicking in Graphs not jumping to right area of NC Program has been corrected.

An issue of Force creating an incorrect feedrate in certain situations has been resolved.

An issue of Air Cuts Only optimization creating a different cut feedrate than expected has been corrected.

Release Notes

An issue of optimization turning off certain warning messages has been resolved.

An issue of an STL file not cutting correctly has been resolved.

An issue of Air Cuts Only not functioning correctly has been resolved.

An issue of false warning generating during optimization has been corrected.

An issue of force graph not generating when there are multiple program files has been corrected.

An issue of Learn Mode not adjusting cutting limit range values has been corrected.

An issue of optimization not working well with holes has been corrected.

Machine Simulation

An issue of cut stock model incorrectly gaining material has been resolved.

An issue of mirrored models not showing collision colors has been corrected.

An issue of pausing simulation affecting Collision Check results has been corrected.

Issue detecting holder collision have been resolved.

An issue of attach components not resetting properly has been corrected.

An issue of multi-spindle machines not removing material has been corrected.

An issue of tools creating collision warnings despite missing the fixture has been corrected.

Tool Manager

An issue of tool profiles sometimes missing segments during dimensioning has been corrected.

An issue of .tls files not parsing HTML language correctly sometimes has been resolved.

An issue of referenced tools not importing the correct number of teeth has been resolved.

An issue of spin point interfering with collision checking has been corrected.

An issue of Tool Manager X-Caliper Dimensions overlapping has been corrected.

An issue of metric tools causing cutting limit warnings to generate in inch projects has been corrected.

An issue of changing tool types changing the model as well has been corrected.

Release Notes

An issue of Tool Manager license causing errors has been corrected.

An issue of Cut Colors Tool Color feature not working with referenced tools has been corrected.

An issue of the comment box not holding text has been corrected.

An issue of Tool Manager displaying incorrect units when set to millimeter has been resolved.

An issue of Tool Manager not displaying APT 7 type cutters has been corrected.

An issue of tool shank not displaying correctly has been resolved.

An issue of coolant type not being referenced in tool list has been corrected.

An issue of grinder geometry warping after dressing has been corrected.

An issue of step tools not functioning as desired has been corrected.

An issue of Build Tool List feature not populating the Tool Event Setup tab has been corrected.

An issue of the wrong holder collision occurring when the holder is defined as a revolved profile has been corrected.

An issue of .tls file displaying incorrectly has been resolved.

An issue of model file cutters not displaying has been corrected.

An issue of Unit Converter features not working as desired has been corrected.

An issue of Sort Tool By Tool ID not working as desired has been corrected.

CAD/CAM Interfaces

CATV5

- An issue of false null reference errors generating has been corrected.

GibbsCAM

- An issue of measurement units sometimes switching during transfer has been corrected.
- An issue of GibbsV not working with Swiss type machines has been corrected.
- An issue of component colors and tool transfers not working has been corrected.
- An issue of turning inserts not importing correctly has been resolved.

Release Notes

MasterCAM

- An issue of work offsets repopulating on project open has been corrected.
- An issue of MCAMV not launching correctly in certain situations has been resolved.
- Issues of MCAMV trying to use the same .stl file in multiple locations have been corrected.
- Issues of MCAMV not selecting solid models automatically have been corrected.
- An issue of tap tools not outputting correctly has been resolved.
- An issue of Face Mill tool data not transferring correctly has been resolved.
- An issue of slowdown has been corrected.
- Issues of incorrect export have been corrected.
- An issue of incorrect exception errors generating has been corrected.
- An issue of unknown errors generating has been corrected.
- An issue of MCAMV incorrectly generating stock models for setups that have not yet run has been resolved.
- An issue of multi-select not working on stock and design models has been corrected.
- An issue of the window not resizing correctly has been resolved.
- An issue of MCAMV not parsing Japanese has been corrected.
- An issue of MCAMV not exporting certain tools correctly has been resolved.
- An issue of MCAMV struggling to create driven points has been corrected.

NXV

- An issue of ballnose drills not transferring has been corrected.

PowerMILL

- An issue of one .tls file mistakenly being used for separate setups has been corrected.
- An issue of changing template pathway modifying interface preferences has been corrected.

G-Code Processing

An issue of **SetVCMultiTools** macro incorrectly affecting Tool Cutting Distance has been resolved.

An issue of Sin840d generating incorrect time calculations on multi-channel machines has been resolved.

An issue of **AutosetToolManCutComVars2** macro not working as desired has been corrected.

An issue of Syntax Check repeating the same error multiple times has been corrected.

An issue of cutter compensation altering motion plane has been corrected.

An issue of variables created by certain macros saving in the wrong location has been corrected.

An issue of system not processing NC Programs has been resolved.

An issue of cut stock being present on file open before the simulation is run has been corrected.

Release Notes

An issue of the distance value in the Status panel sometimes switching to negative numbers has been corrected.

An issue of syntax errors not displaying correctly has been resolved.

Graphs

An issue of Graphs not opening and generating errors messages has been corrected.

An issue of wrong values generating for Chip Thickness and Total Force has been resolved.

An issue of Mouse Followers feature not functioning properly has been corrected.

X-Caliper

An issue of Dimension label prefixes not working has been resolved.

An issue of X-Caliper Dimensioning tool gathering incorrect measurements has been resolved.

An issue of C-Sink Depth not working with chamfers has been corrected.

Installation

An issue of German version of Vericut missing certain installation descriptions has been corrected.

Reviewer

An issue of pre-9.0 Reviewer files not loading correctly has been resolved.

An issue of stock disappearing upon tool contact has been corrected.

An issue of certain tools not appearing in Reviewer has been corrected.

Reports

An issue of text on Annotated Images generating incorrectly in Reports has been corrected.

An issue of data errors generating in Tool Report has been corrected.

An issue of units not being consistent between columns has been corrected.

An issue of Report not generating has been corrected.

An issue with the page break feature has been corrected.

An issue of View Captures behaving inconsistently has been resolved.

New Macros in V9.6

AutosetTableAxisVarsMcdUnits

CollisionCheckingRequiredOnOff

FanucTPPoint

FanucTPPointDebug

FanucTPPointData

FanucTPPointDataUnits

GetCurrentControlState

IgnoreEqualWithAlpha

Ijk2AnglesTolerance

NumVarBracketOption

OptiHeaderOption

PolarLogic

RapidInterpolationWarningOnOff

SetRobotConfigA1NoSignConstraint

SetRobotConfigA1Positive

SetRobotConfigA1Negative

SetRobotConfigA1PositiveRotation

SetRobotConfigA1NegativeRotation

SetRobotConfigA4NoSignConstraint

SetRobotConfigA4Positive

SetRobotConfigA4Negative

SetRobotConfigA4PositiveRotation

SetRobotConfigA4NegativeRotation

SetRobotConfigA5NoSignConstraint

SetRobotConfigA5Positive

SetRobotConfigA5PositiveRotation

SetRobotConfigA5NegativeRotation

SetRobotConfigA6NoSignConstraint

SetRobotConfigA6Positive

SetRobotConfigA6PositiveRotation

SetRobotConfigA6Negative

SetRobotConfigA6NegativeRotation

SetNCProgramVar

VirtualXAxisBDynamic

VirtualXAxisBRotary