

plot_rawdata_scalebars

November 20, 2019

```
In [1]: import numpy as np
import mne
from mne.datasets import sample
```

```
In [2]: data_path = sample.data_path()
```

```
fname = data_path + '/MEG/sample/sample_audvis_raw.fif'
```

```
raw = mne.io.read_raw_fif(fname)
```

Opening raw data file /Users/adam2392/mne_data/MNE-sample-data/MEG/sample/sample_audvis_raw.fif.

Read a total of 3 projection items:

PCA-v1 (1 x 102) idle

PCA-v2 (1 x 102) idle

PCA-v3 (1 x 102) idle

Range : 25800 ... 192599 = 42.956 ... 320.670 secs

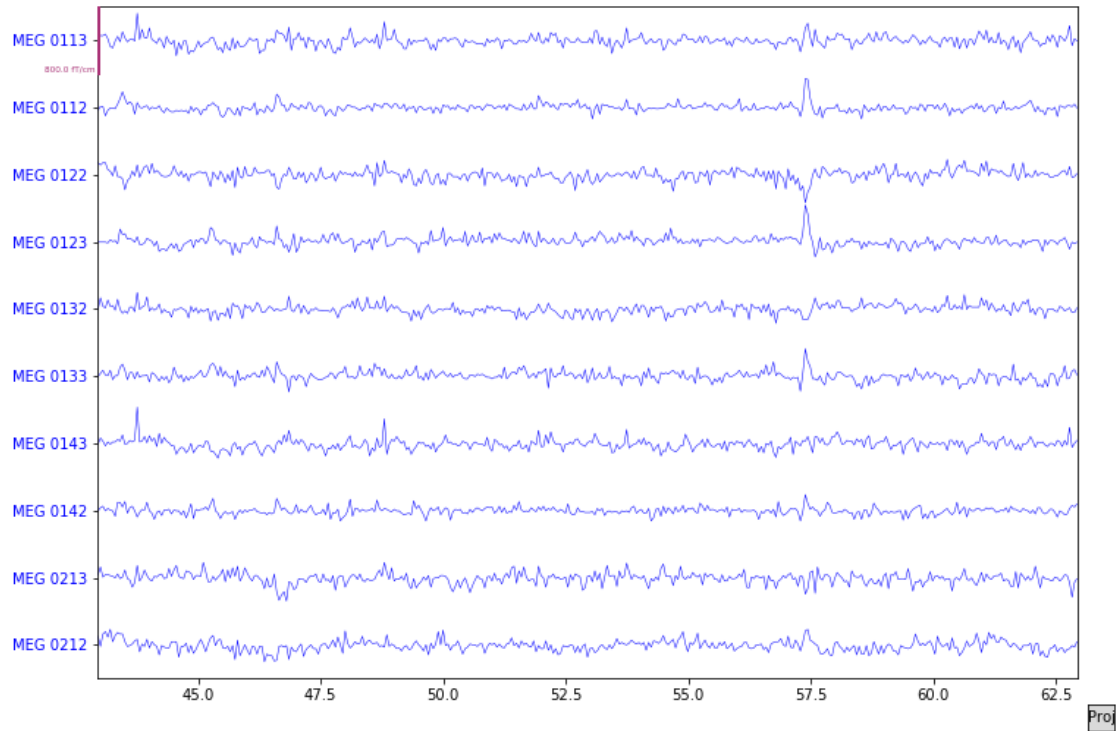
Ready.

Current compensation grade : 0

```
In [5]: fig = raw.plot(
        duration=20,
        n_channels=10,
        decim=30,
        show_first_samp=True,
        show=True,
        # clipping='clamp',
        start=0,
        show_scrollbars=False,
        use_scalebars=True,
    )

print(fig)
```

<ipython-input-5-07c21e8550b3>:10: RuntimeWarning: The measurement information indicates a low-p
use_scalebars=True,

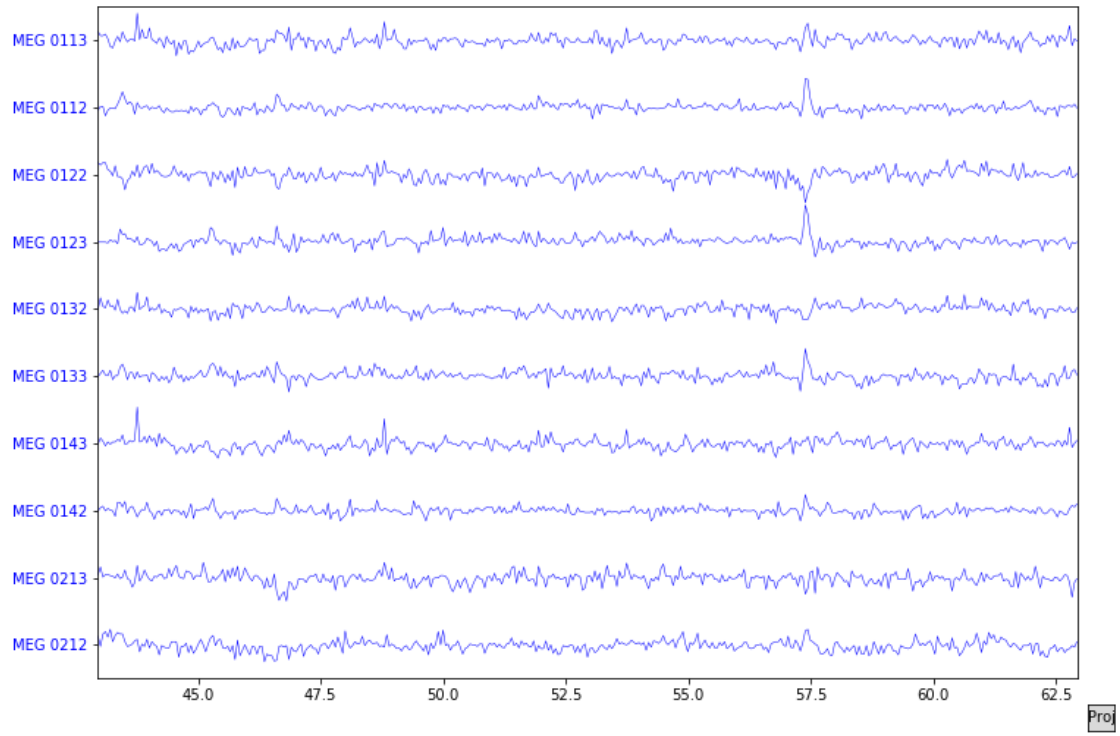


Figure(747x497)

```
In [6]: fig = raw.plot(
        duration=20,
        n_channels=10,
        decim=30,
        show_first_samp=True,
        show=True,
        #         clipping='clamp',
        start=0,
        show_scrollbars=False,
        use_scalebars=False,
    )

print(fig)
```

<ipython-input-6-90ae9ec7d203>:10: RuntimeWarning: The measurement information indicates a low-p
use_scalebars=False,



Figure(747x497)