

Vivotek VSS Integration Note v2.1.0



Chapter 1

Introduction

1.1 Prerequisites

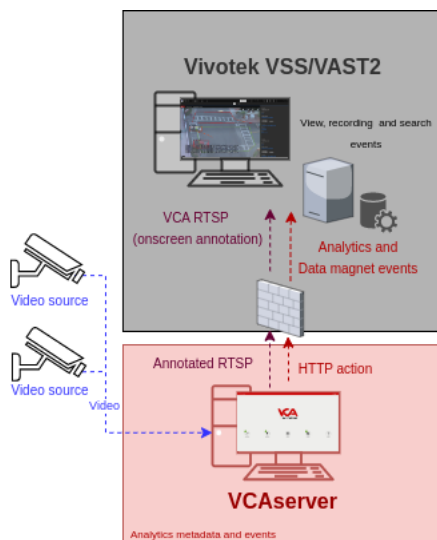
- VCAserver version 2.3.2 or greater.
- Vivotek VSS or VAST2.

1.2 Supported Features

- Annotated RTSP stream.
- HTTP events with metadata available via tokens.

1.3 Architecture

For this web UI integration, VSS receives the annotated RTSP stream from the VCAserver and the analytics data is sent through HTTP requests with JSON format and VCA tokens containing details about the event.



Chapter 2

VCAserver Configuration

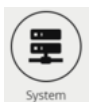
2.1 Confirming the RTSP port used for transmitting video footage

Check, and change if required, the RTSP port used by VCA for external connections to the channels within the VCA service.

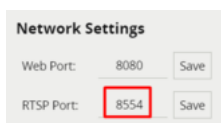
1. From the main screen, click the **system cog** in the top right.



2. Then, click on **System**.



3. In **Network Settings**, you can see the RTSP port used by the VCAserver to send the RTSP stream of its channels. Change it if necessary and click **Save**.



Note: The syntax for connecting to these channels is:

`rtsp://<device_ip>:<RTSP_port>/channels/<channel_id>`.

Example: `rtsp://192.168.1.44:8554/channels/0`.

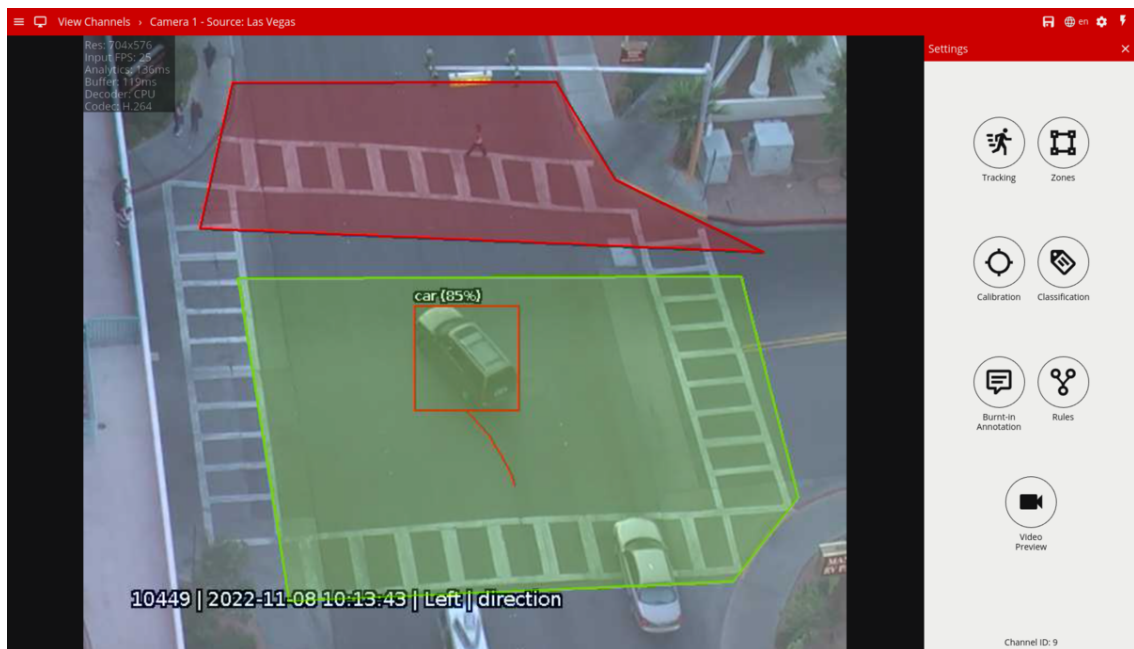
2.2 Creating a Channel

Configure the VCAserver as required with the appropriate channel and logical rules. A basic setup is detailed below as an example:

1. Configure a source to connect to a camera.

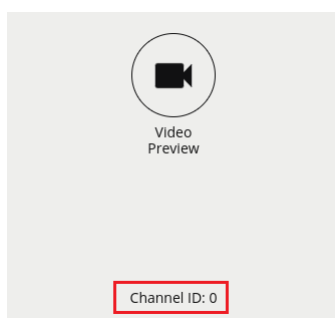
Note: the recommended settings for the camera stream to VCA is a maximum resolution of D1 (640 x 480) with a frame rate of 15 frames per second. A lower resolution and frame rate will reduce the analytic accuracy, a higher resolution and frame rate will result in high CPU usage and can reduce analytical accuracy.

2. Configure a **zone** for the channel.
3. Select the **Tracking Engine** to identify objects in the scene.
4. Configure **rules or filters** to trigger an event on object detection in the zone.



5. Note the **Channel ID** as this will be needed when connecting to the RTSP stream from the VSS server.

Note: The channel ID can be located at the bottom of the channels menu.



For more information on creating and configuring channels in VCA please refer to the VCA core manual 2.1.

2.3 Creating an Action

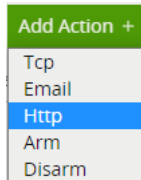
1. Click the **system cog** in the top right to access the Settings.



2. Then, click **Edit Actions**.



3. Click **Add Action** and select **HTTP** from the list of available actions.



4. Enter a descriptive name for the action.

5. Click the arrow on the right of the action to expand the HTTP configuration options.

- **URI:** Enter the URI required by Data Magnet to integrate any external data into VSS. Default endpoint: `http://<serverIP>:<serverPort>/api/udi`
- **Port:** Enter the web port of the VSS server (by default 3454).
- **Headers:** `Content-Type: Application/JSON`.
- **Body:** Add the JSON data required by Data Magnet and the VSS server with the VCA tokens.
- **Method:** Select **POST** from the available methods.
- **Enable Authentication:** Check to enable authentication.
- **Username:** Enter the username to access the VSS server.
- **Password:** Enter the password to access the VSS server.
- **Sources:** Select **Add Source +** to display a list of the available Sources and logical rules and select the logical rule created for the source you want to send to the server.

Type: Name:

URI:

Port:

Headers:

Line Endings:

Body:

```
{
  "category": "VCAserver",
  "class": "{{#DLClassification}}{{class}}{/DLClassification}}{/Object}",
  "event": "{{type.string}}",
  "channel": "{{#Channel}}{{name}}{/Channel}}",
  "zone": "{{#Zone}}{{name}}{/Zone}}",
  "data source": "VCAserver2.1_Chan9"
}
```

Line Endings:

Method:

Enable Authentication:

Username:

Password:

Send Snapshots:

Snapshot Quality:

Interval between snapshots: Seconds

Number of snapshots before event:

Number of snapshots after event:

Multipart request name:

Verify Certificate:

Encryption:

Always Trigger:

Sources:

For this integration, the following tokens were used to send an information on the camera, zone and rule type that triggered the event:

- `category`: Reserved key (required). The category needed for Data Magnet.
- `{{#DLClassification}}{{class}}{/DLClassification}}{/Object}}`: The Deep-Learning classification name of the object.
- `{{type.string}}`: The type of the event. This is usually the type of rule that triggered the event.
- `{{#Channel}}{{name}}{/Channel}}`: The name of the channel that the event occurred on.
- `{{#Zone}}{{name}}{/Zone}}`: An array of zones associated with the event.
- `data source`: Reserved key (required). The name of the data source created for Data Magnet.

Note: The message is an example. You can adjust the data and add more tokens as

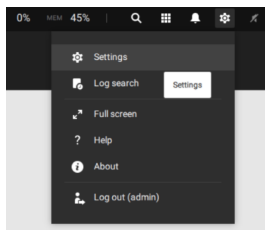
needed.

Chapter 3

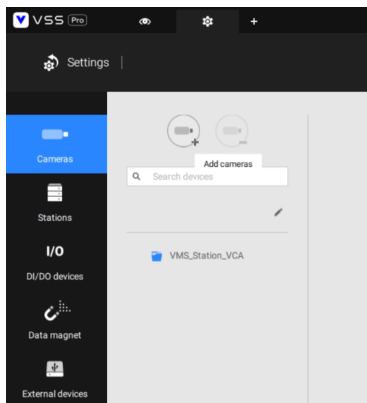
Vivotek VSS Configuration

3.1 Configuring a New Camera

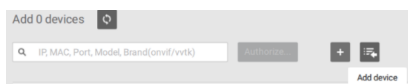
1. The first step is to add a new camera to the system. From the main screen, click on the **cog** icon at the top right and select **Settings**.



2. Click on **Cameras** on the left hand side. Then, click on the **+** button at the top to add a new camera.

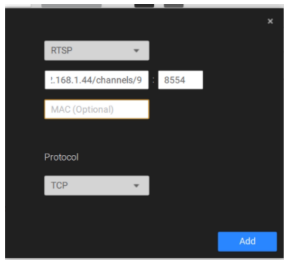


3. Click on the **+** button to add a new device, and configure it as follows:

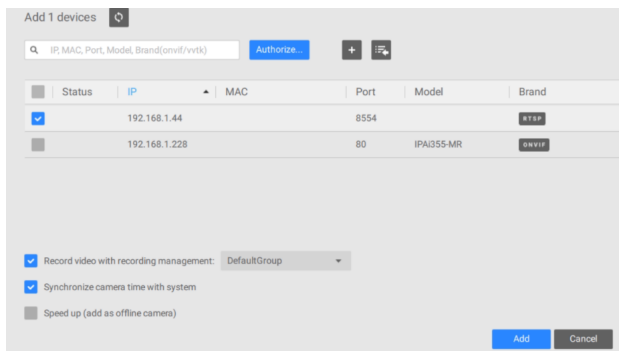


- Select **RTSP** from the drop-down list.
- Enter the RTSP **URL** to connect to a VCA channel. Example: <ip_address>/channels/<c
- Enter the **RTSP port** configured in the VCAserver (8554 by default).

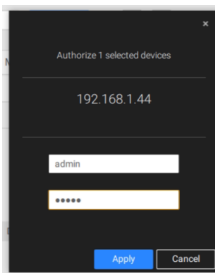
- In *Protocol*, select **TCP** from the drop-down list.
- Click on **Add** to add the new device.



4. Select the newly created device and click on **Add**.



5. Enter the credentials to access the VCAserver and click **Apply**.



6. Wait for the camera to synchronize with the server.

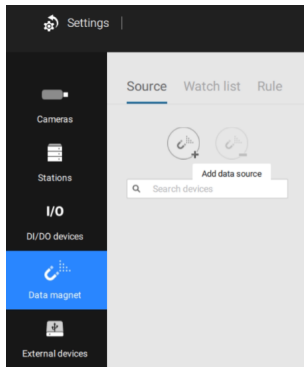
7. A live image of the camera will be displayed in the preview window.



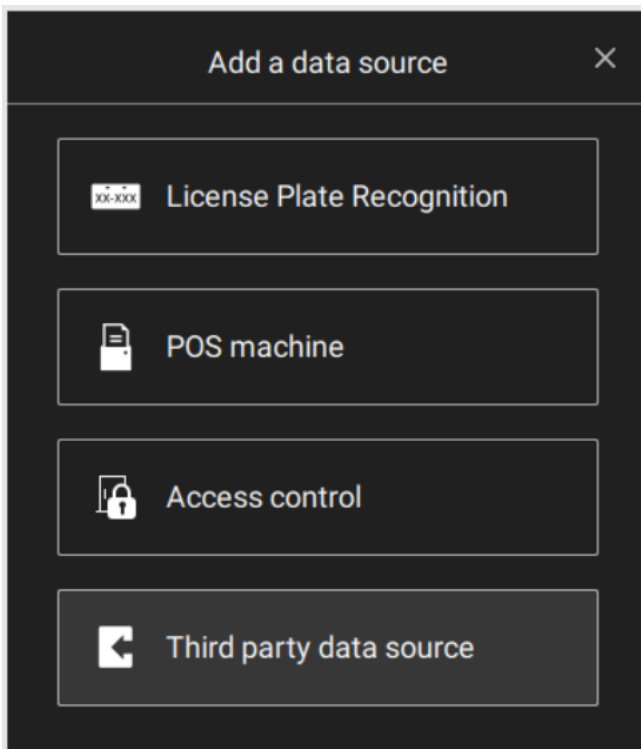
3.2 Configuring Data Magnet

Data Magnet is an open platform for system integrators to integrate any external data into VSS or VAST2.

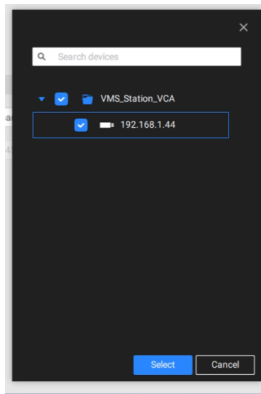
1. To configure a new Data Magnet, click on **Data magnet** on the left hand side menu. Then, click on the **+** button at the top to create a new data source.



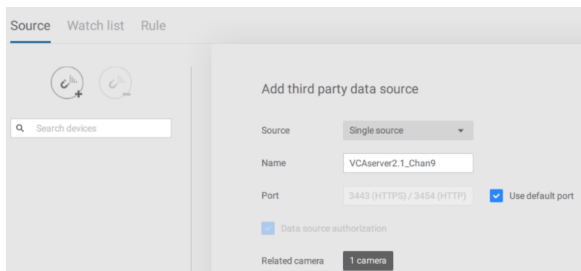
2. In the *Add a data source* pop-up window, select **Third party data source** from the available options.



3. Configure the data source as illustrated below:
 - **Source:** Select **Single source** from the drop-down list. *You can add Multiple sources if multiple channels send data to the same port.*
 - **Name:** Enter a descriptive name for the new data source.
 - **Port:** Enable **Use default port** to send data to port 3454.
 - Enable **Data source authorization**.
 - **Related camera:** Select the VCA channel(s) that will send data to the VSS server.



- Click on **Add** to add the new data source.



3.2.1 Data Format

All data sent to VAST2 Data Magnet server is in JSON format and using UTF-8 encoding. The JSON should be in key-value-pair, where all keys are strings and values are strings or arrays.

- **category**: User defined category (required).
- **class**: Classification of the object.
- **event**: The type of the event. This is usually the type of rule that triggered the event.
- **channel**: The name of the channel/camera that the event occurred on.
- **zone**: The detection zones associated with the event.
- **data source**: The name of the data source (required).

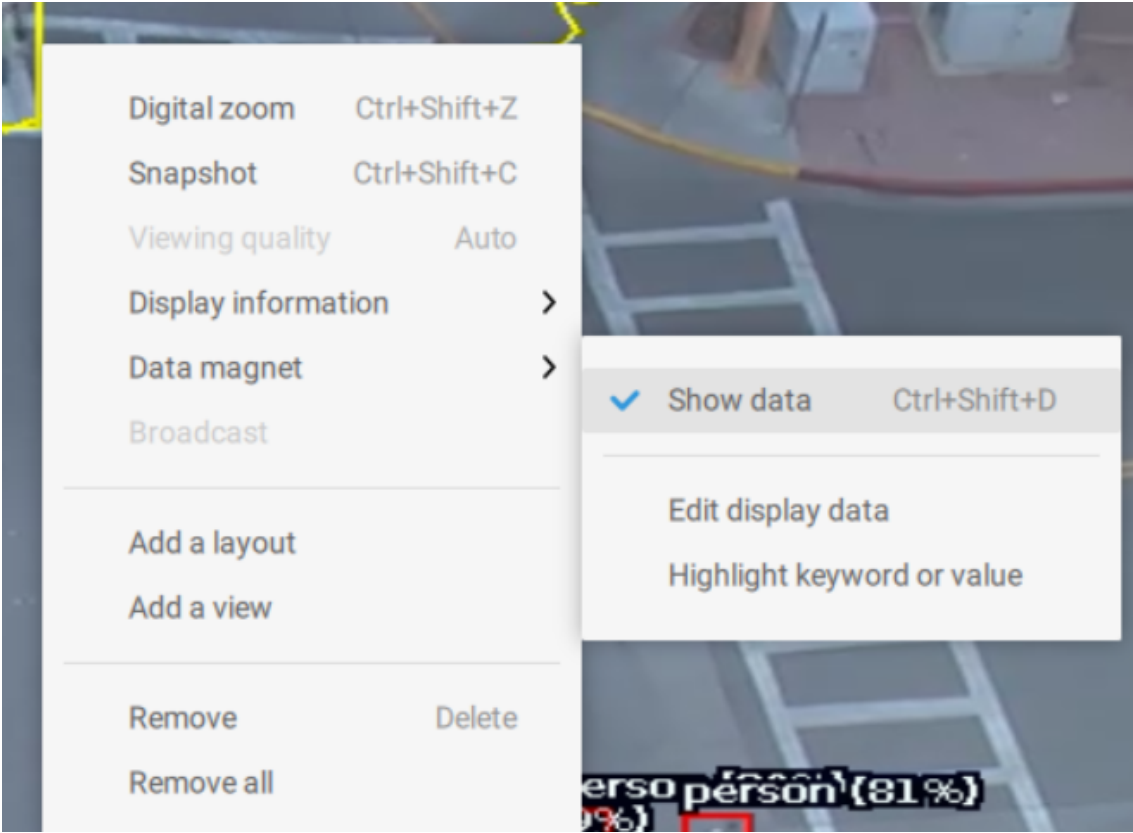
3.2.1.1 Template of the JSON Message With VCA Tokens

```
{
  "category": "VCAserver",
  "class": "{{#Object}}{{#DLClassification}}{{class}}{/DLClassification}}{/Object}}",
  "event": "{{type.string}}",
  "channel": "{{#Channel}}{{name}}{/Channel}}",
  "zone": "{{#Zone}}{{name}}{/Zone}}",
  "data source": "VCAserver2.1_Chan9"
}
```

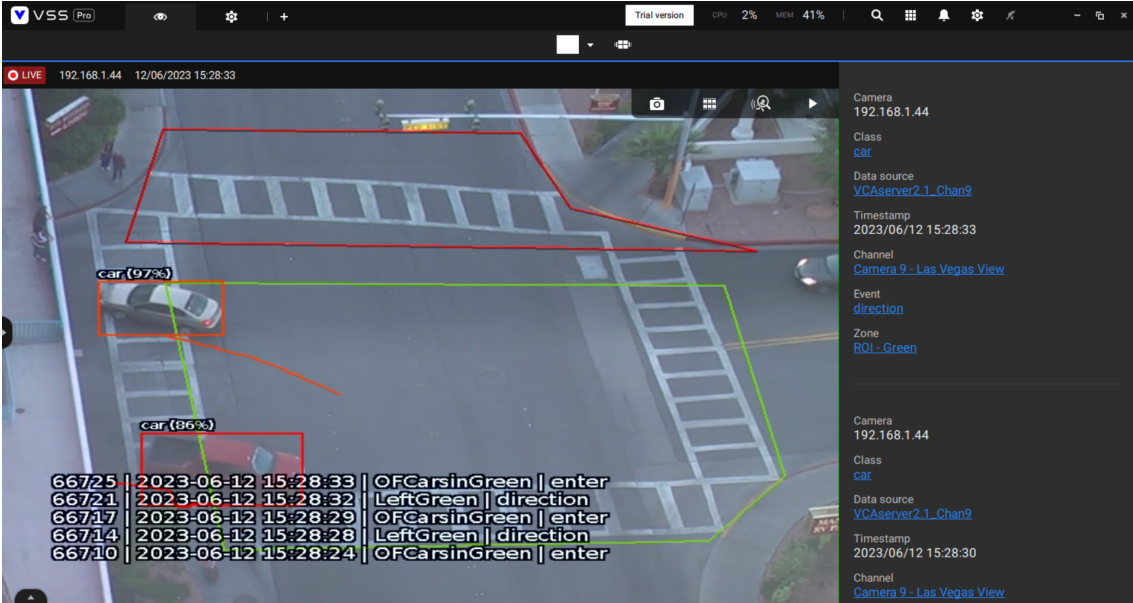
For more information on configuring data sources or Data Magnet, please refer to the Vivotek Data Magnet document.

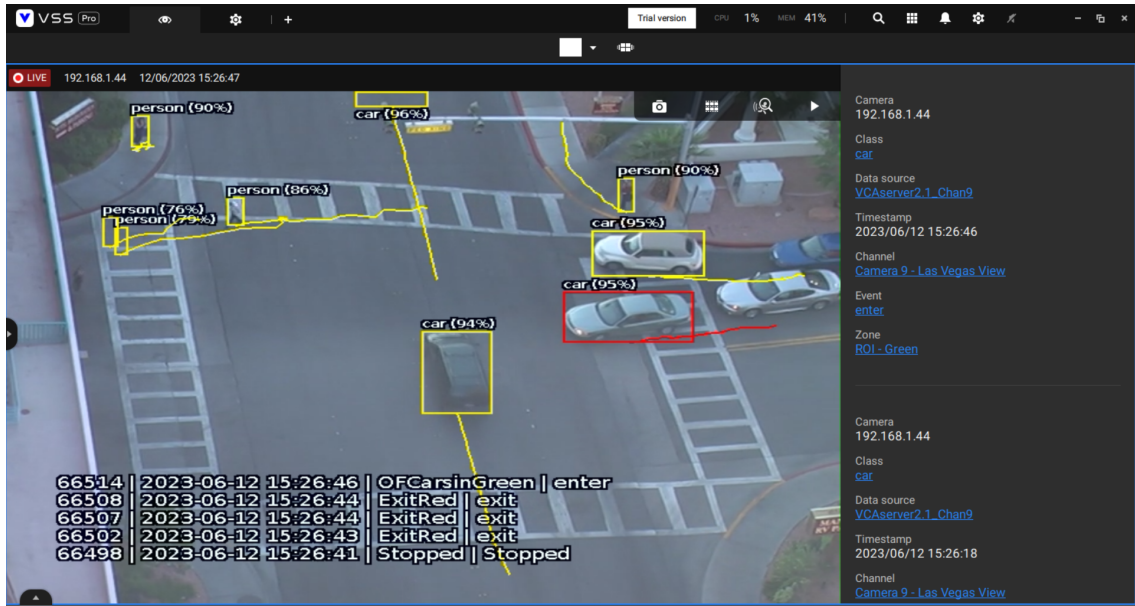
3.3 Data Magnet Overlay Events

1. Navigate to the VSS **Live** page and right-click on the camera. Then, select **Show data** from the *Data magnet* menu.



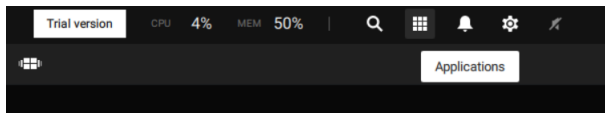
2. Every time a logical rule is triggered on the VCAserver, an event will be overlaid on the selected camera as follows:



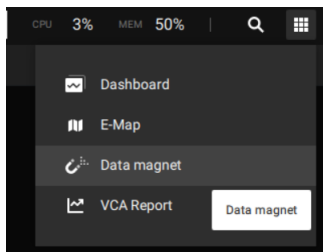


3.3.1 Data Magnet Search

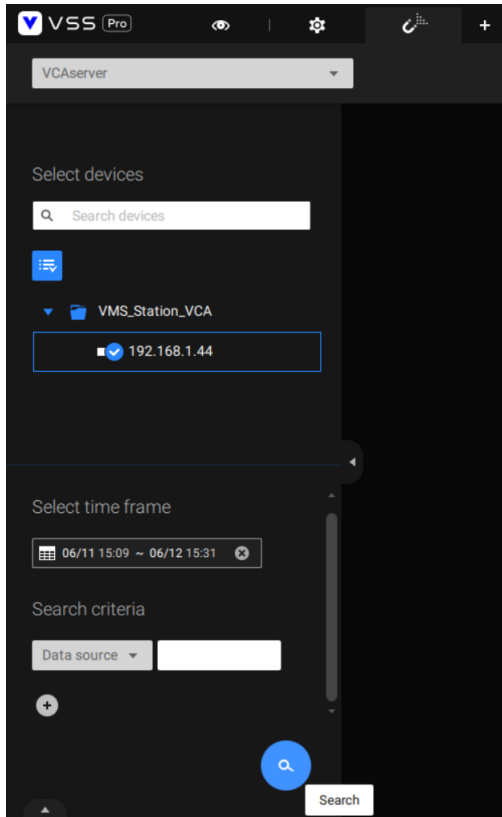
1. From the main screen, click on **Applications** on the top menu.



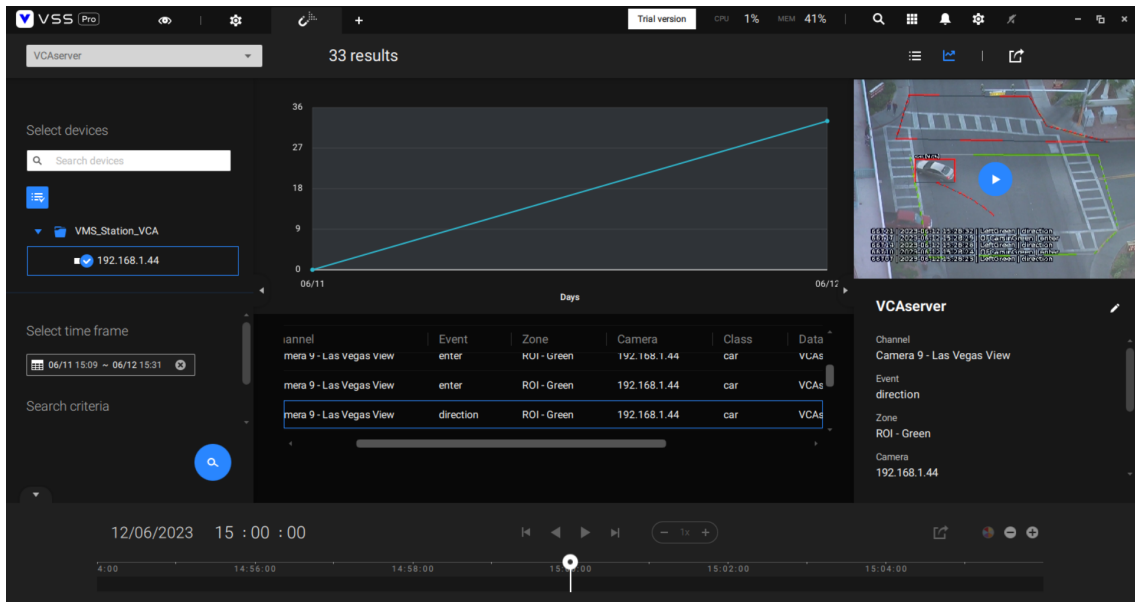
2. Select **Data magnet** from the available options.



3. You can review specific events on the *Data Magnet* page. Select the data source, camera, time frame and search criteria.



- The results will be listed on the right-hand side (events with annotated recordings).



VSS Pro Trial version CPU 2% MEM 47%

VCAserver 27 results

Select devices

Search devices

VMS_Station_VCA

192.168.1.44

Select time frame

Last 24 hours

Search criteria

Channel	Event	Zone	Camera	Class
Camera 9 - Las Vegas View	enter	ROI - Green	192.168.1.44	car
Camera 9 - Las Vegas View	Stopped	ROI - Green	192.168.1.44	car
Camera 9 - Las Vegas View	enter	ROI - Green	192.168.1.44	car
Camera 9 - Las Vegas View	enter	ROI - Green	192.168.1.44	car
Camera 9 - Las Vegas View	enter	ROI - Green	192.168.1.44	car
Camera 9 - Las Vegas View	enter	ROI - Green	192.168.1.44	car
Camera 9 - Las Vegas View	enter	ROI - Green	192.168.1.44	car
Camera 9 - Las Vegas View	Stopped	ROI - Green	192.168.1.44	car
Camera 9 - Las Vegas View	enter	ROI - Green	192.168.1.44	car
Camera 9 - Las Vegas View	enter	ROI - Green	192.168.1.44	car
Camera 9 - Las Vegas View	enter	ROI - Green	192.168.1.44	car

15/06/2023 13:47:06

VCAserver

Channel
Camera 9 - Las Vegas View

Event
enter

Zone
ROI - Green

Camera
192.168.1.44

15/06/2023 13:47:06

13:42:00 13:44:00 13:46:00 13:48:00 13:50:00 13:52:00